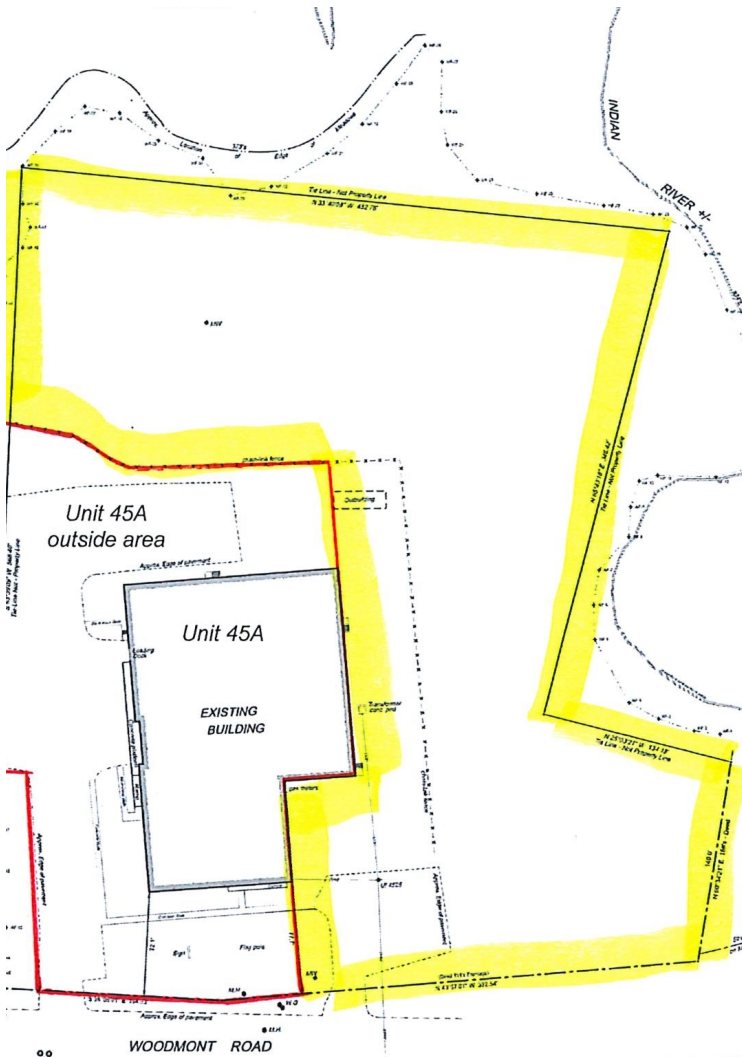


# MILFORD - BUILD TO SUIT 45 WOODMONT ROAD



- Nearly four-acre parcel
- Light industrial zone
- Excellent location, only 1/4 mile to I-95 at Exit 40

- Suitable for warehouse distribution, manufacturing, assembly, wholesale, offices, R&D labs
- Potential of approx. 35,000 SF
- Ample room for parking



**CARL RUSSELL, CCIM, SIOR**  
**Senior Commercial Broker**  
203.783.9999 x 102  
203.640.1412  
crussell@hpearce.com

[www.hpearce.com/commercial-real-estate/](http://www.hpearce.com/commercial-real-estate/)



**pearce**  
commercial