

SQUARE FOOTAGE:

EACH UNIT LIVING (2 UNITS)	1,052 SQ. FT.
TOTAL TOWNHOME BLDG.	2,104 SQ. FT.

NOTES:

V12.0205 PATROCK WALLS ARE EXCC. 8" W/ STUCCO. A FLOOR WALL EXCC. 8" W/ STUCCO AND 6" INSULATED FIBERGLASS PANELS 4" X 8" @ 4" ON C.

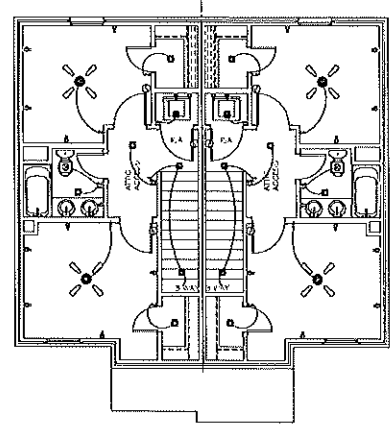
A-20045 EXCC. 1/2" IS TO BE EXCC. BY OWNER EXCERN FROM MASSPORON STUCCO EXCC. AND APPROVED AS PER MANUFACTURER'S RECOMMENDATION. VERIFY FINISHES BEFORE FLOOR TO A FINISH. MARKS CIRCLED TO CENTER OF FINISH ALLOW.

VERIFICATION:
 THIS SET OF PLANS HAS BEEN PREPARED BY THE ARCHITECT AND THE ELECTRICAL ENGINEER HAS REVIEWED THE ELECTRICAL PORTIONS OF THE PLANS AND HAS FOUND THEM TO BE IN ACCORDANCE WITH THE NATIONAL ELECTRICAL CODE AND THE STATE OF LOUISIANA ELECTRICAL CODE. THE ARCHITECT AND ELECTRICAL ENGINEER ARE NOT PROVIDING ANY GUARANTEE OR WARRANTY FOR THE ACCURACY OF THE INFORMATION CONTAINED HEREIN.

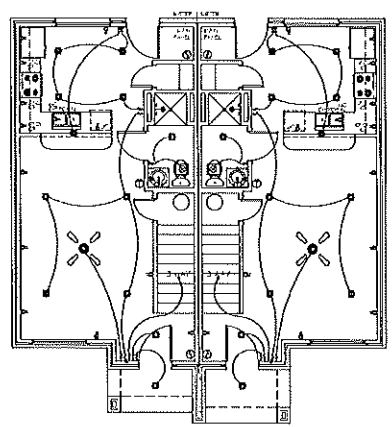
ELECTRICAL SYMBOLS:

SYMBOL	DESCRIPTION
(S)	SINGLE SWITCH
(3S)	THREE WAY SWITCH
(4S)	FOUR WAY SWITCH
(C)	CONTROLLED BY TIME AND LIGHT SENSITIVE PHOTO-CELL
(O)	CORNER OUTLET
(A)	250V OUTLET
(A)	ASAP OUTLET
(C)	CORNER OUTLET - CONTROLLED BY PHOTO-CELL
(C)	CORNER OUTLET - CONTROLLED BY PHOTO-CELL
(C)	CONTROLLED BY PHOTO-CELL AS PER OWNER
(C)	CONTROLLED BY PHOTO-CELL AS PER OWNER
(1)	TRANSFORMER IN CASE AT 500 AMP 11
(2)	SHOCK DETECTOR FOR RECYCLED FIBER BRICK AND LOGG COGGES

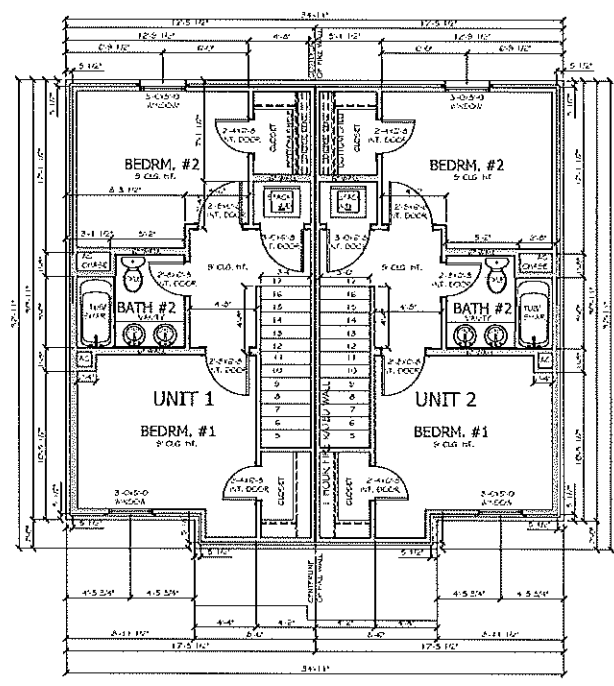
NOTE: ALL FIXTURES AS PER OWNER



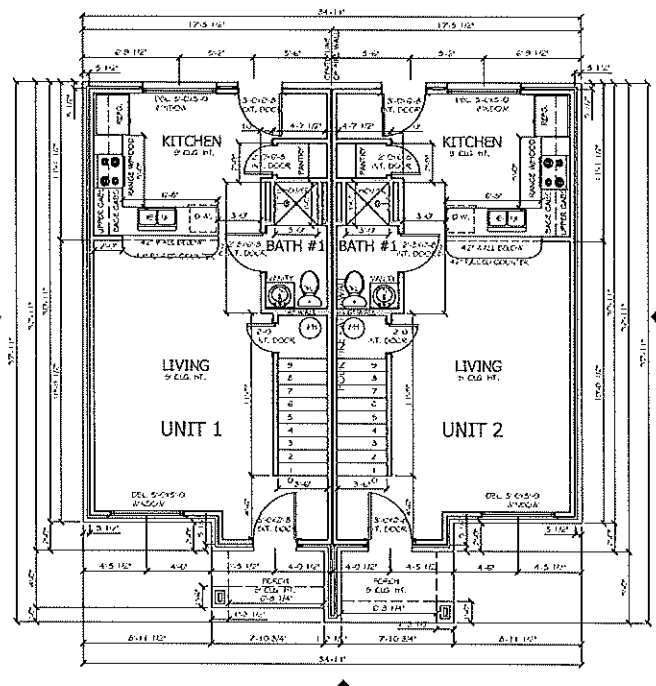
4 SECOND ELEC. PLAN
 SCALE: 3/16" = 1'-0"
 RE: 1



3 FIRST ELEC. PLAN
 SCALE: 3/16" = 1'-0"
 RE: 1



2 SECOND FLOOR PLAN
 SCALE: 1/4" = 1'-0"
 RE: 1



1 FIRST FLOOR PLAN
 SCALE: 1/4" = 1'-0"
 RE: 1

PROJECT:
 TOWNHOME PLANS
 FOR
 SWLA CONSTRUCTORS
 & DEVELOPMENT LLC

ADDRESS:
 6824 STREET
 LAKE CHARLES, LA 70661
 337-476-5112

FLOOR PLANS & ELEC. PLANS
A2.0