

FOR LEASE OR SUB-LEASE | OFFICE

# WEST 101 CORPORATE CENTER

1860 N 95th Lane, Phoenix, AZ 85037

Steve Beck President & Associate Broker | 480.610.2400 | [steve@coberealestate.com](mailto:steve@coberealestate.com)



[coberealestate.com](http://coberealestate.com)



FOR LEASE OR SUB-LEASE | OFFICE

# West 101 Corporate Center

1860 N 95th Lane, Phoenix, AZ 85037



## PROPERTY SUMMARY

Available SF:	2,641 - 11,848 SF
Building Size:	81,040
Building Class:	A
Year Built:	2008
Zoning:	C-2
Cross Streets:	Loop 101 & McDowell Rd

## SUITES AVAILABLE

Suite 130 (2,641 SF)	\$30.17/SF/Yr (FS)
Suite 320 (3,500 SF)	\$30.00/SF/Yr (FS)
Suite 325 (8,348 SF)	\$30.00/SF/Yr (FS)
Suites 320/325 (11,848 SF)	\$30.00/SF/Yr (FS)

## VIRTUAL TOUR

## PROPERTY OVERVIEW

West 101 Corporate Center is a Class A, three-story, multi-tenant office building offering an available suite for lease in a prime West Phoenix location. The property features striking architecture, covered parking, and outstanding visibility along one of the area's highest-traffic corridors with over 140,000 vehicles per day. Strategically positioned near major freeways, it also offers prominent monument, freeway, and building signage opportunities for exceptional exposure and metro-wide accessibility.

## PROPERTY HIGHLIGHTS

- Exceptional visibility with 140,000+ VPD
- Covered parking for added convenience
- Prominent monument, freeway, and building signage opportunities
- Positioned in one of West Phoenix's highest-traffic corridors
- Suites 320 & 325 are available May 2026

Steve Beck | President & Associate Broker

O: 480.610.2400 C: 480.251.1505

steve@coberealestate.com

www.coberealestate.com





FOR LEASE OR SUB-LEASE | OFFICE

# West 101 Corporate Center

1860 N 95th Lane, Phoenix, AZ 85037



Steve Beck | President & Associate Broker  
O: 480.610.2400 C: 480.251.1505  
steve@coberealestate.com  
www.coberealestate.com

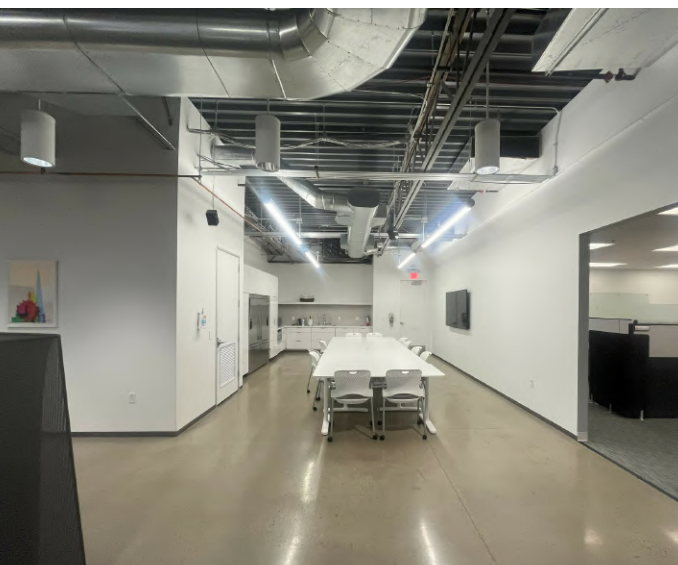




FOR LEASE OR SUB-LEASE | OFFICE

# West 101 Corporate Center

1860 N 95th Lane, Phoenix, AZ 85037



Steve Beck | President & Associate Broker  
O: 480.610.2400 C: 480.251.1505  
steve@coberealestate.com  
www.coberealestate.com

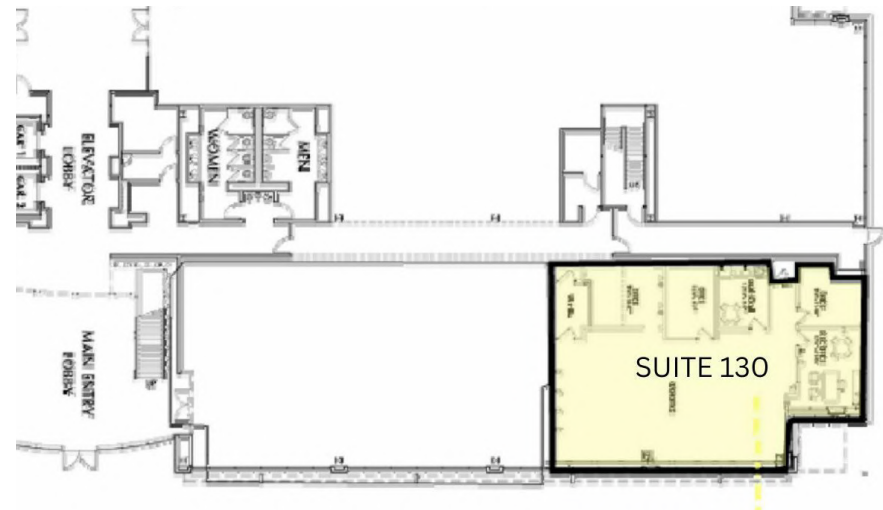
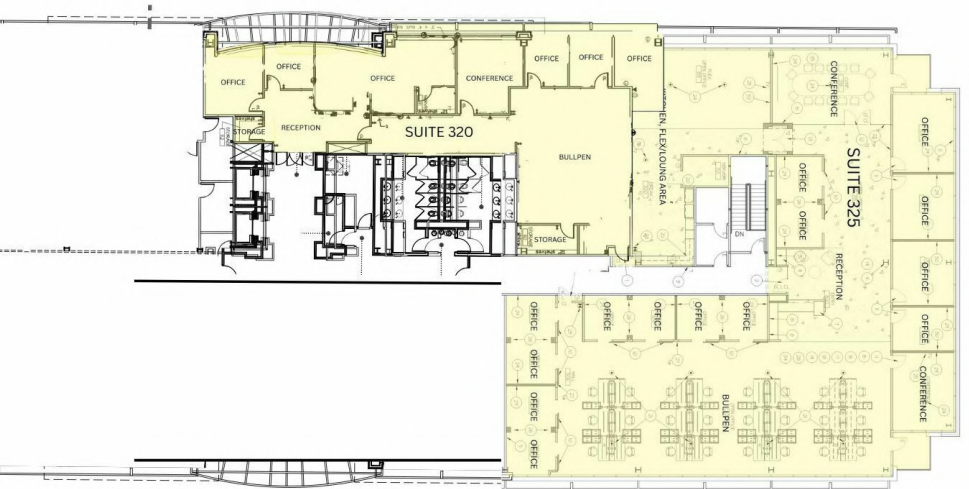
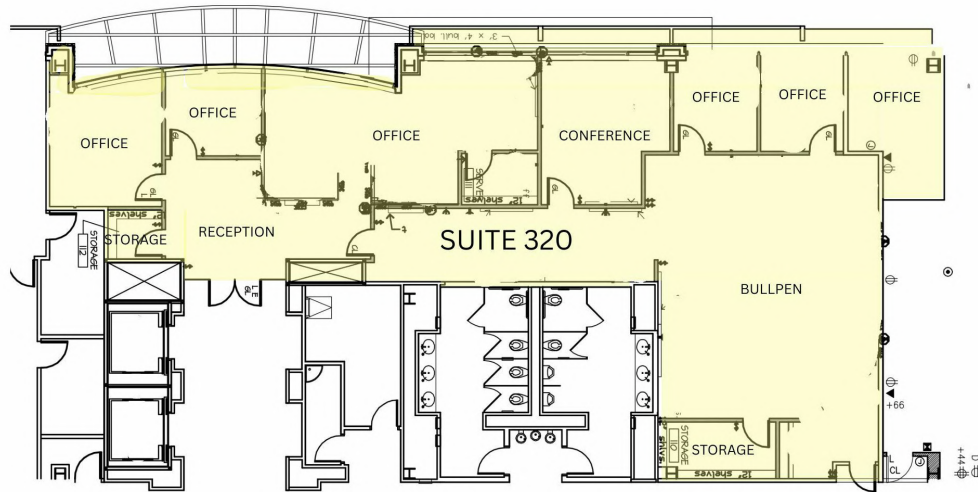




FOR LEASE OR SUB-LEASE | OFFICE

# West 101 Corporate Center

1860 N 95th Lane, Phoenix, AZ 85037



Steve Beck | President & Associate Broker  
O: 480.610.2400 C: 480.251.1505  
steve@coberealestate.com  
www.coberealestate.com

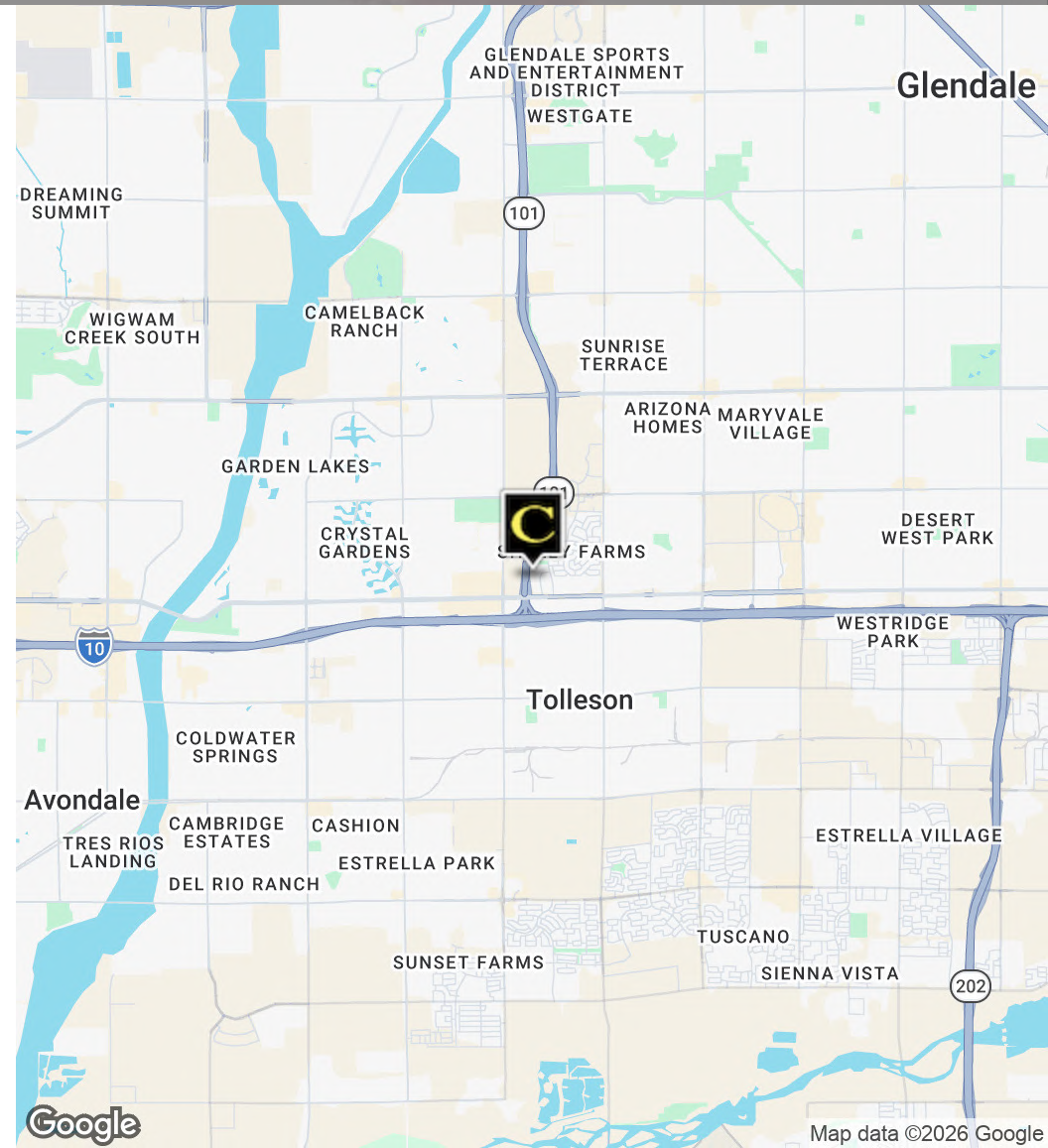
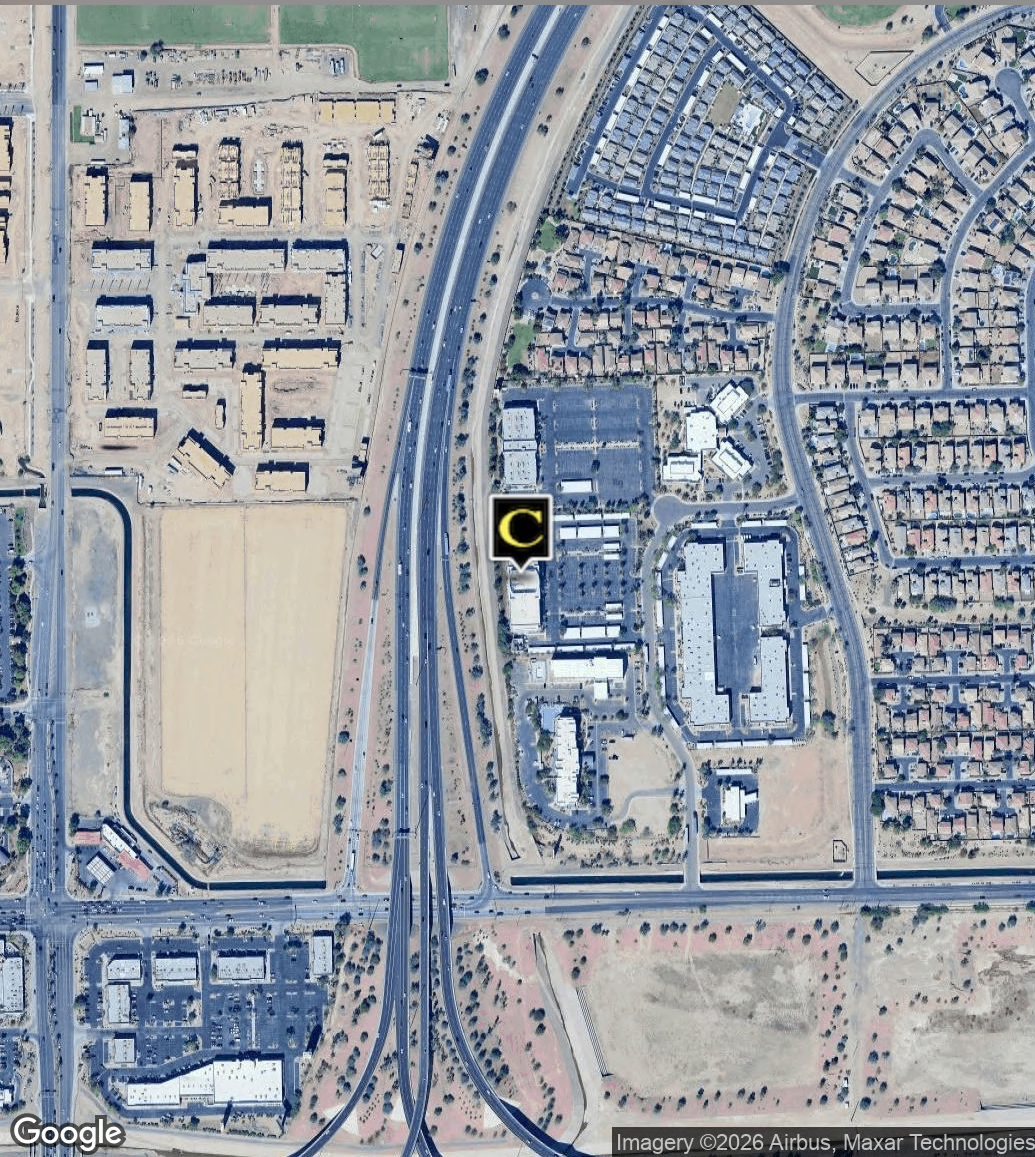




FOR LEASE OR SUB-LEASE | OFFICE

# West 101 Corporate Center

1860 N 95th Lane, Phoenix, AZ 85037



Steve Beck | President & Associate Broker

O: 480.610.2400 C: 480.251.1505

steve@coberealestate.com

www.coberealestate.com





FOR LEASE OR SUB-LEASE | OFFICE

# West 101 Corporate Center

1860 N 95th Lane, Phoenix, AZ 85037

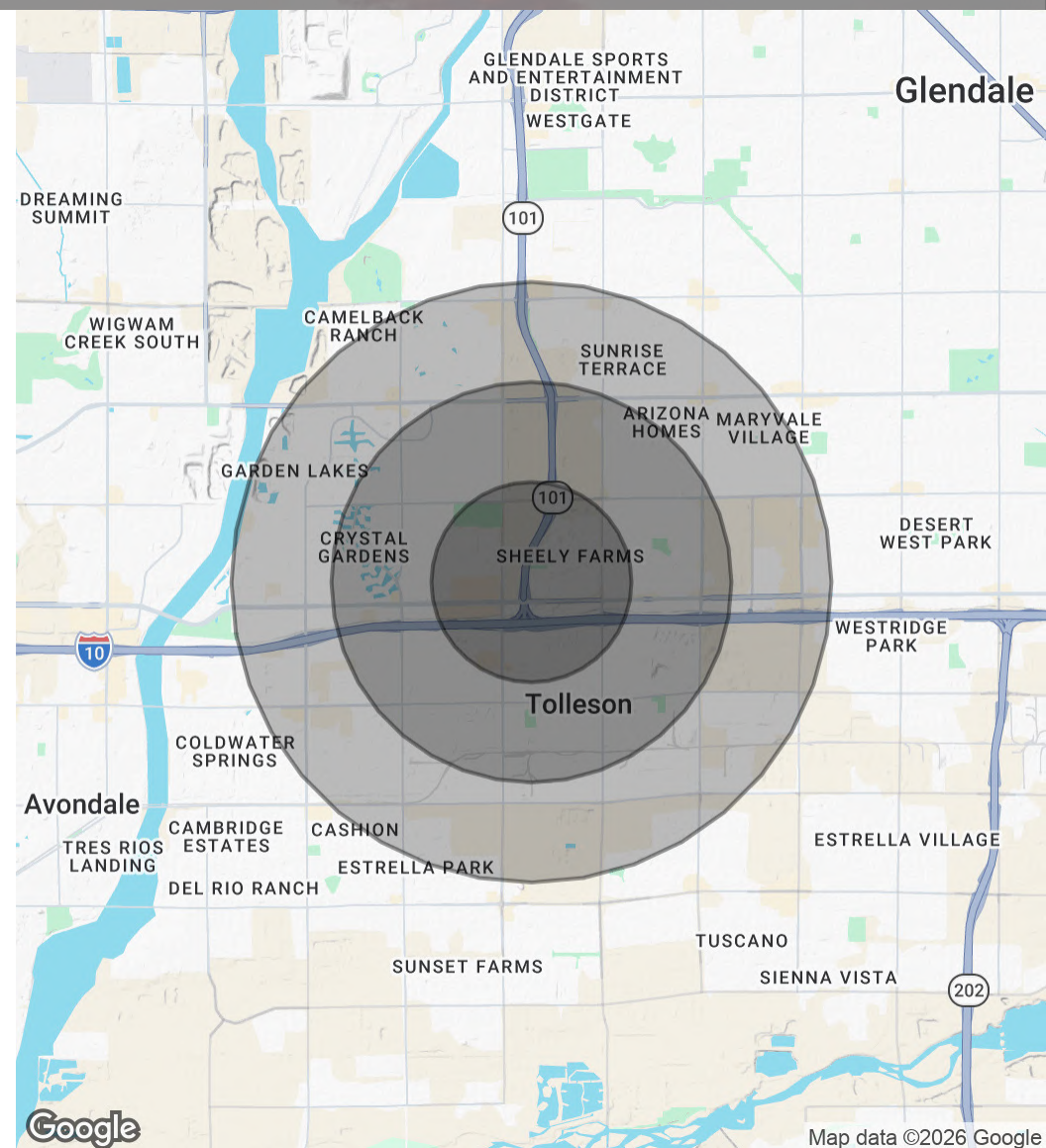
## POPULATION

	1 MILE	2 MILES	3 MILES
Total Population	11,213	47,338	117,720
Average Age	32	33	33
Average Age (Male)	31	32	33
Average Age (Female)	33	34	34

## HOUSEHOLDS & INCOME

	1 MILE	2 MILES	3 MILES
Total Households	3,368	14,029	34,789
# of Persons per HH	3.3	3.4	3.4
Average HH Income	\$90,387	\$90,646	\$89,639
Average House Value	\$358,013	\$347,907	\$349,909

Demographics data derived from AlphaMap



Steve Beck | President & Associate Broker

O: 480.610.2400 C: 480.251.1505

steve@coberealestate.com

www.coberealestate.com

