

# THE OFFICE PARK OF PALATINE

**TURNKEY OFFICE /  
MEDICAL CAMPUS**  
200 - 20,000 SF FOR LEASE



**MOATS**  
OFFICE PROPERTIES



**The Office Park of Palatine**  
is a well-established, professional campus  
in the heart of Palatine's thriving  
Northwest suburban corridor.

Owned and professionally managed as a  
cohesive portfolio, the park offers a rare  
combination of stability, flexibility, and  
long-term ownership stewardship.

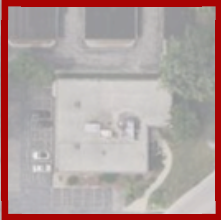


**PALATINE LIBRARY**



**THE OFFICE PARK OF PALATINE**  
Spanning First Bank Drive and N. North Court, the campus provides fully built-out, adaptable suites designed to accommodate medical, dental, therapy, and professional office users.

**630**



**616**



**625**



**675**



**630**



**553**



**579**



**639**



**N. NORTH COURT**

**N. FIRST BANK DRIVE**

**HICKS ROAD**

**PALATINE POLICE DEPARTMENT**



**MARIANO'S GROCERY**



**FIRST BANK & TRUST**



**E. NORTHWEST HWY**



**MOATS OFFICE PROPERTIES**



**The Office Park of Palatine  
campus advantages include:**

- Property management on-site
- Mature, well-maintained landscaping
- Courtyards with outdoor seating
- Multiple entrances for privacy
- Large ribbon windows for abundant natural light
- Ample parking
- 24 hour - 7 day secure tenant access
- Tenant-controlled HVAC systems
  - Elevators
  - ADA accessible
  - Recycling services
  - Security cameras
- Energy-efficient building upgrades
- High-speed connectivity options
- Easy access to IL-53
- Walking distance to Palatine Public Library, Police Station, & Mariano's Grocery



## OFFICE PARK OF PALATINE

## SURROUNDED BY \$5B+ IN NEW DEVELOPMENT

- Nearby mixed-use planning and civic investments
- Minutes to Route 53/I-290 and Northwest Highway (US-14)
- Quick access to Downtown Palatine Metra (UP-NW Line)
- Restaurants & retail (<5 minutes)
- Proposed Chicago Bears Arlington Park campus (<10 minutes)



RESTAURANTS & RETAIL

SMITH ROAD

PALATINE LIBRARY

HICKS ROAD

PALATINE POLICE HQ

MARIANO'S GROCERY

E NORTHWEST HWY

PALATINE METRA STATION

RESTAURANTS & RETAIL

RESTAURANTS & RETAIL

PALATINE ROAD

CHESTNUT WOODS

TWIN LAKES

PLEASANT HILL

ARLINGTON PARK METRA STATION

4-WAY INTERCHANGE

PROPOSED CHICAGO BEARS ARLINGTON PARK CAMPUS

EUCLID AVENUE

IL 53



Arlington Heights



MOATS OFFICE PROPERTIES

# THE OFFICE PARK OF PALATINE

## AVAILABLE FOR LEASE

### 553 N. NORTH COURT

SUITE 100 - 1,530 RSF

### 625 N. NORTH COURT

SUITE 305 - 3,459 RSF  
SUITE 320 - 1,879 RSF

### 579 N. FIRST BANK DRIVE

SUITE 100 - 5,573 RSF  
SUITE 210 - 1,060 RSF  
SUITE 265 - 756 RSF

### 630 N. NORTH COURT

SUITE 140 - 315 RSF

### 600 N. NORTH COURT

SUITE 110 - 1,685 RSF  
SUITE 120 - 651 RSF  
SUITE 230 - 591 RSF

### 675 N. NORTH COURT

SUITE 205 - 314 RSF  
SUITE 222 - 311 RSF  
SUITE 272 - 274 RSF  
SUITE 300 - 2,657 RSF  
SUITE 320 - 1,213 RSF  
SUITE 360 - 1,068 RSF

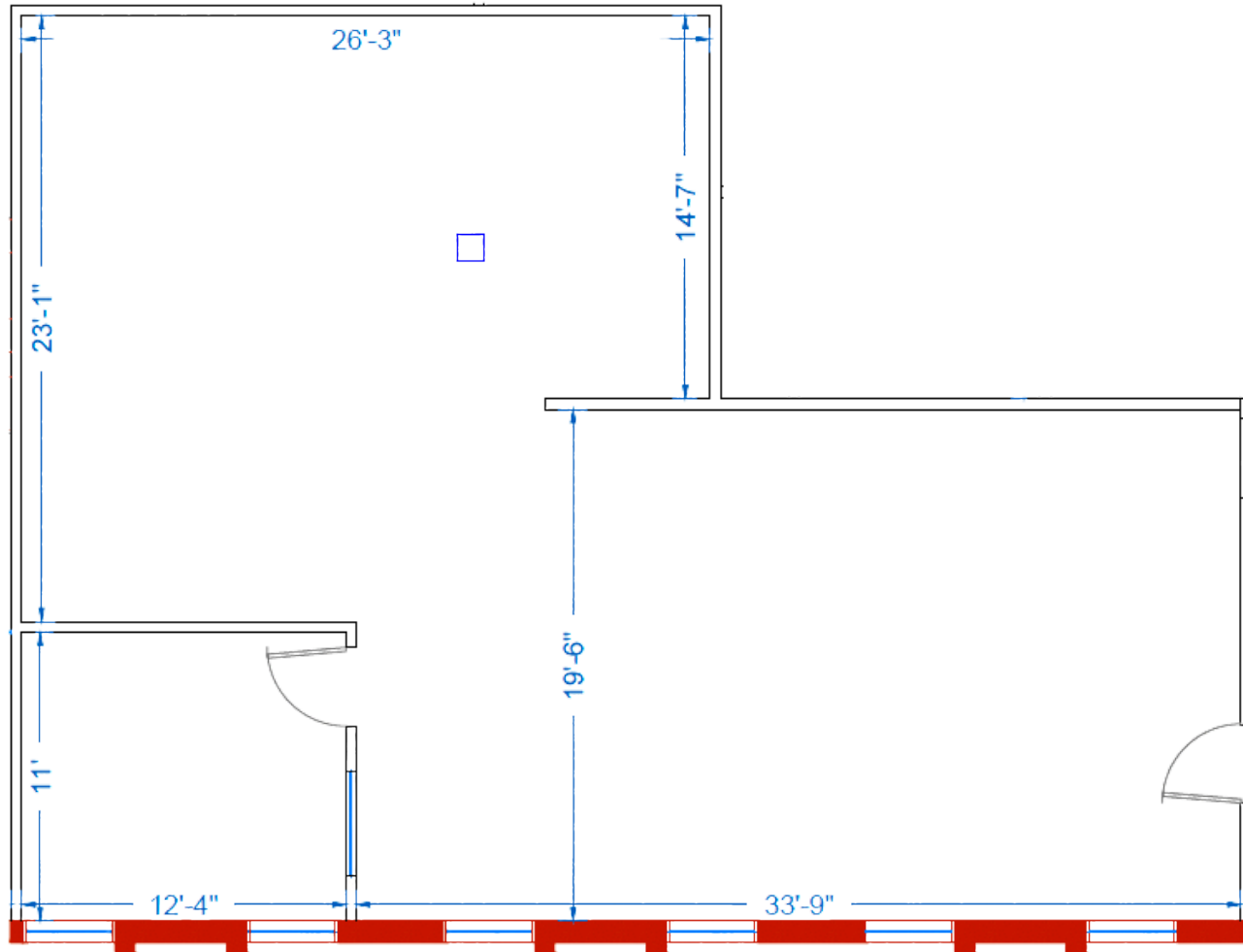
### 616 N. NORTH COURT

SUITE 130 - 811 RSF  
SUITE 240 - 1,109 RSF  
SUITES 240 & 250 - 3,367 RSF



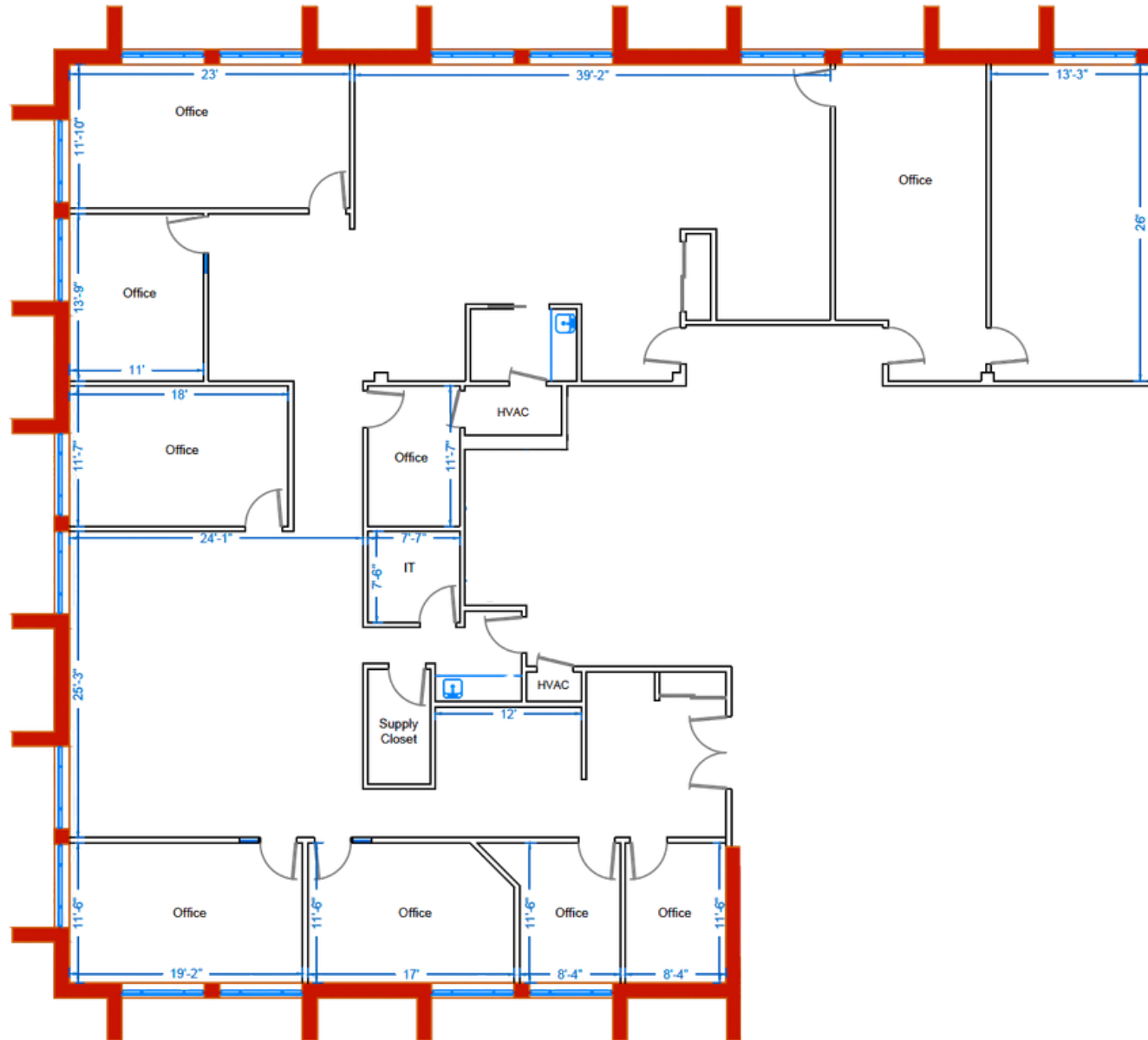
# 553 N. NORTH COURT

SUITE 100 | 1,530 RSF



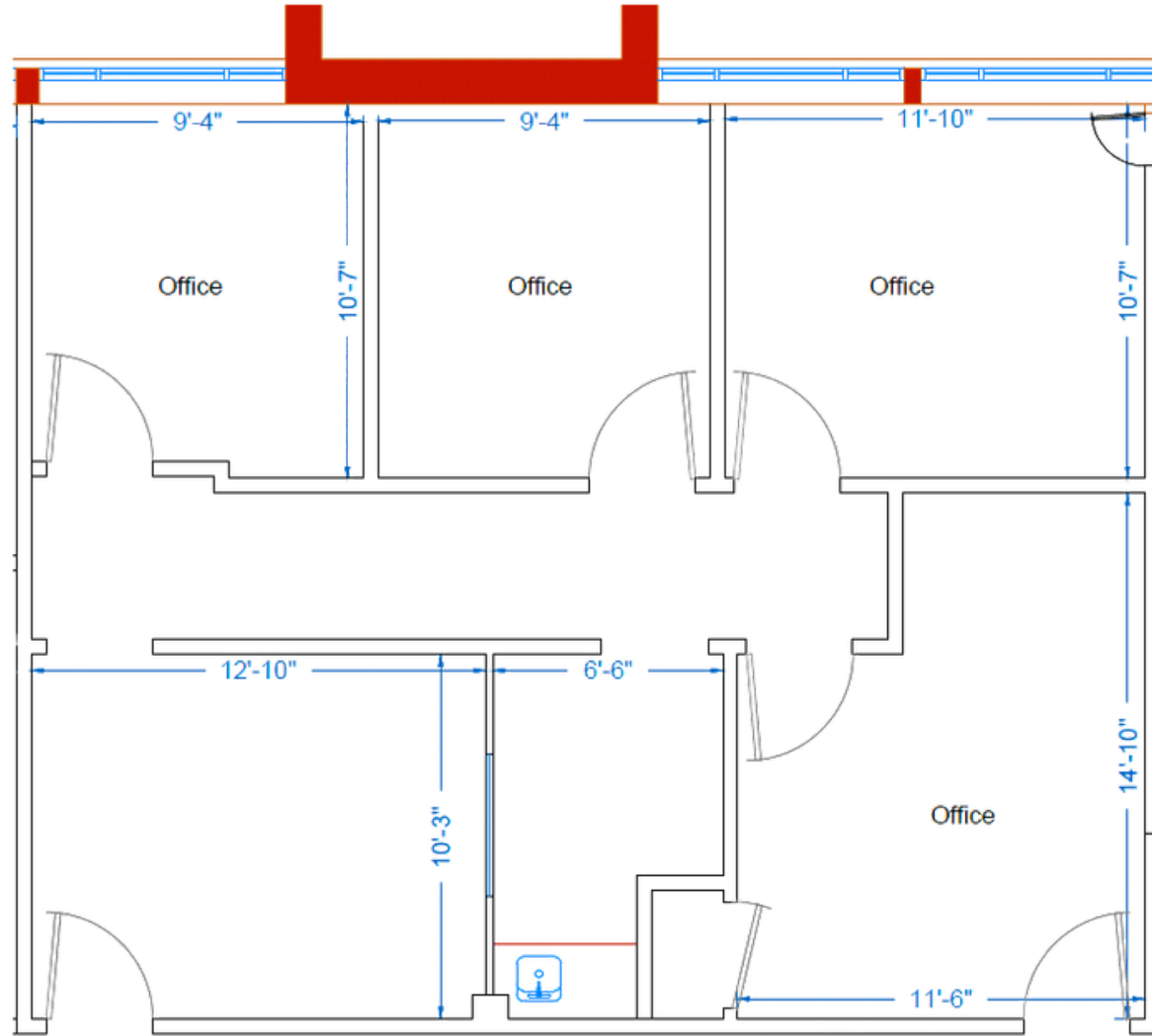
# 579 N. FIRST BANK DRIVE

SUITE 100 | 5,573 RSF



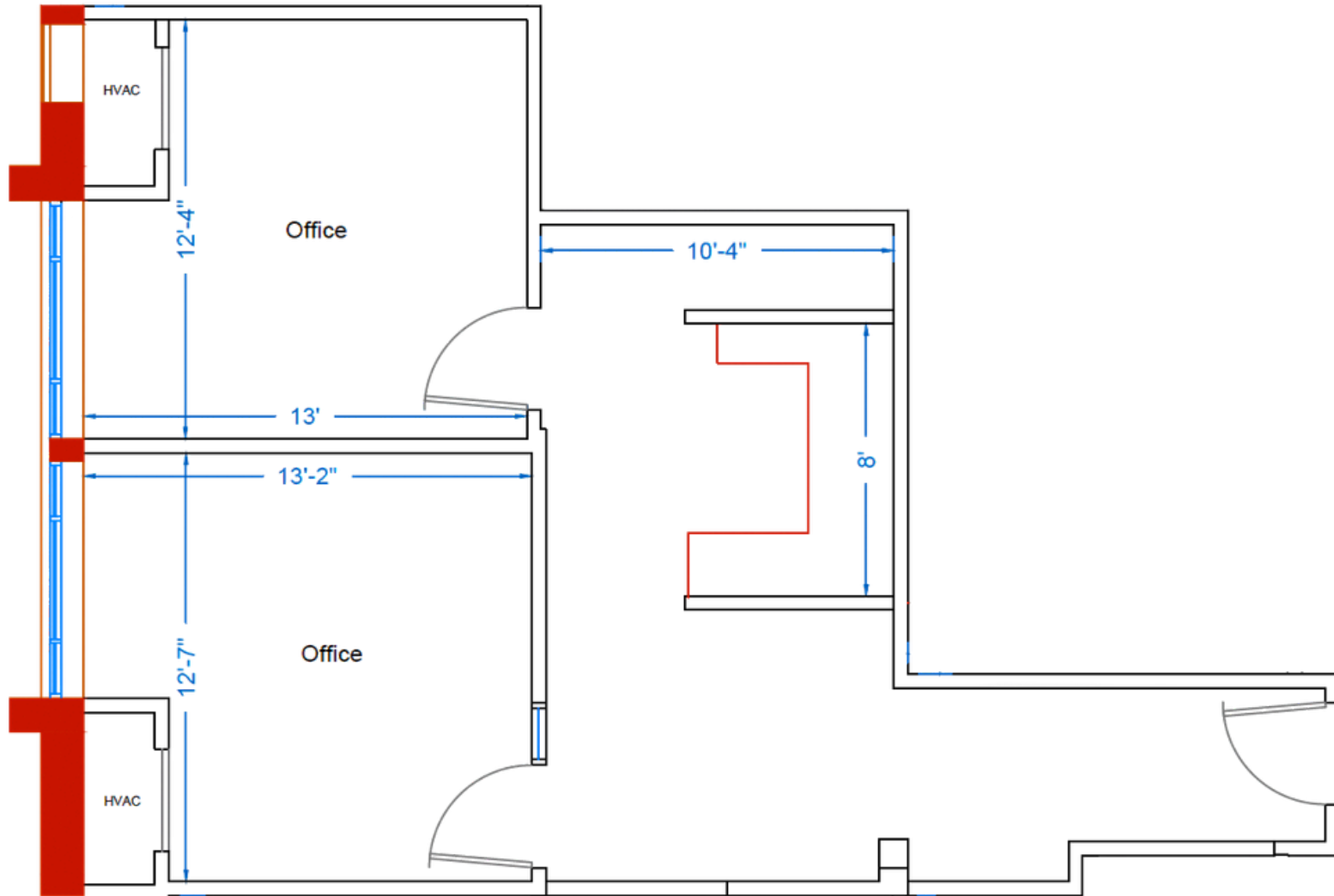
# 579 N. FIRST BANK DRIVE

SUITE 210 | 1,060 RSF



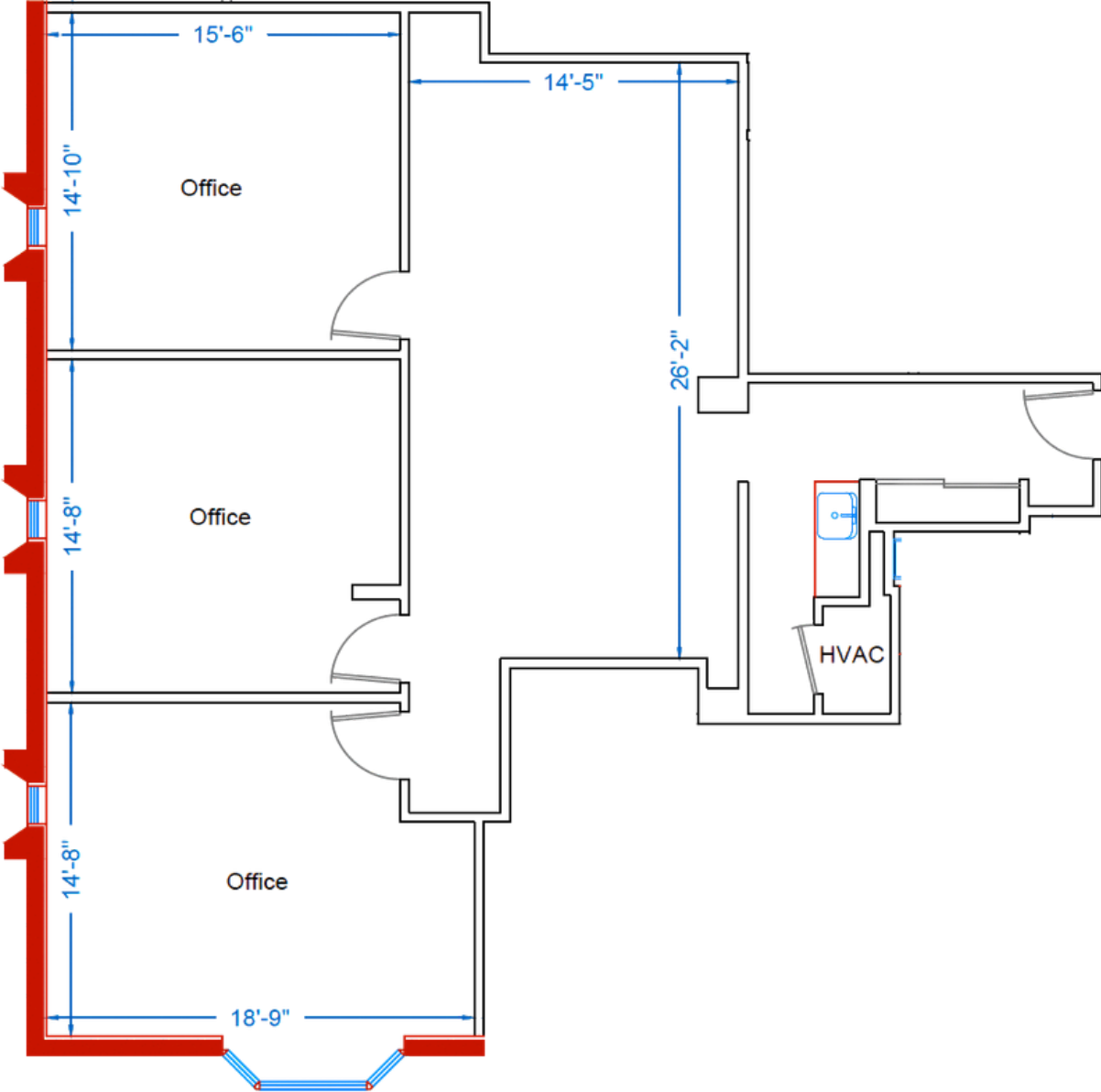
# 579 N. FIRST BANK DRIVE

SUITE 265 | 756 RSF



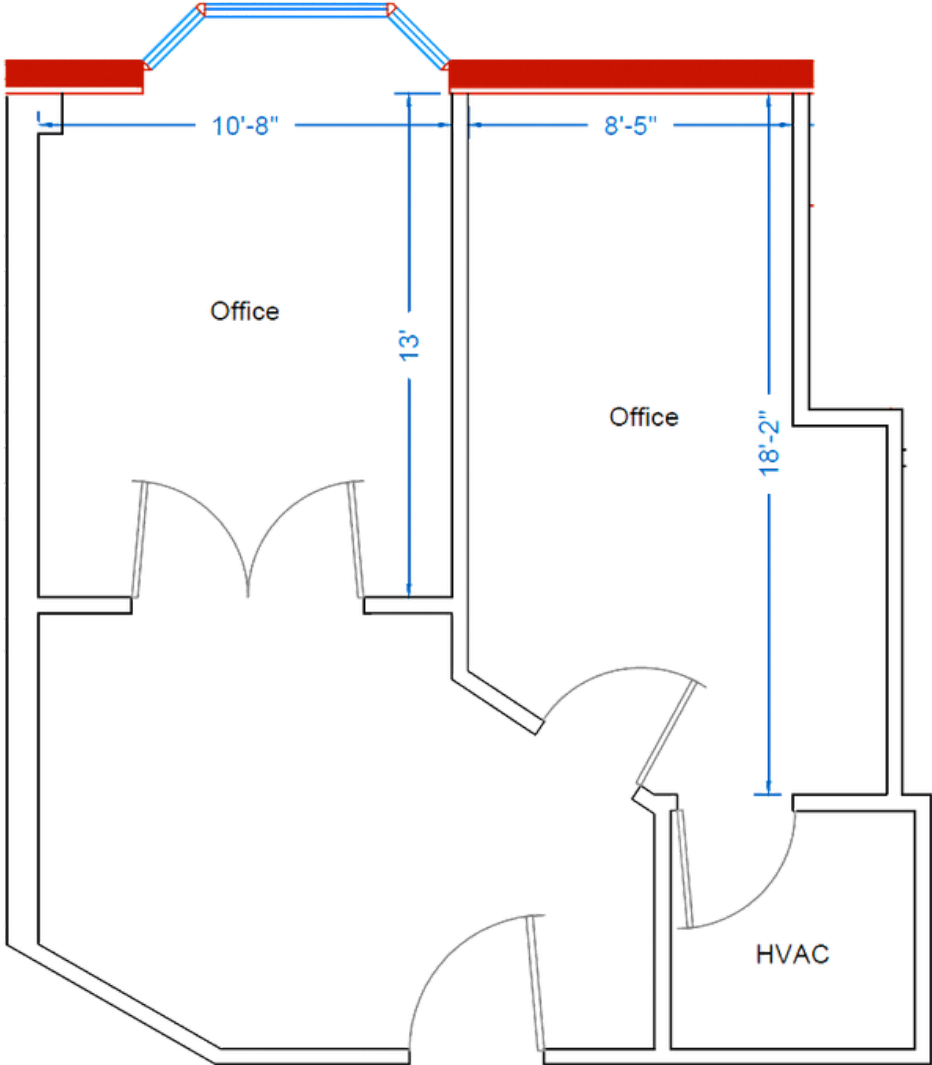
# 600 N. NORTH COURT

SUITE 110 | 1,685 RSF



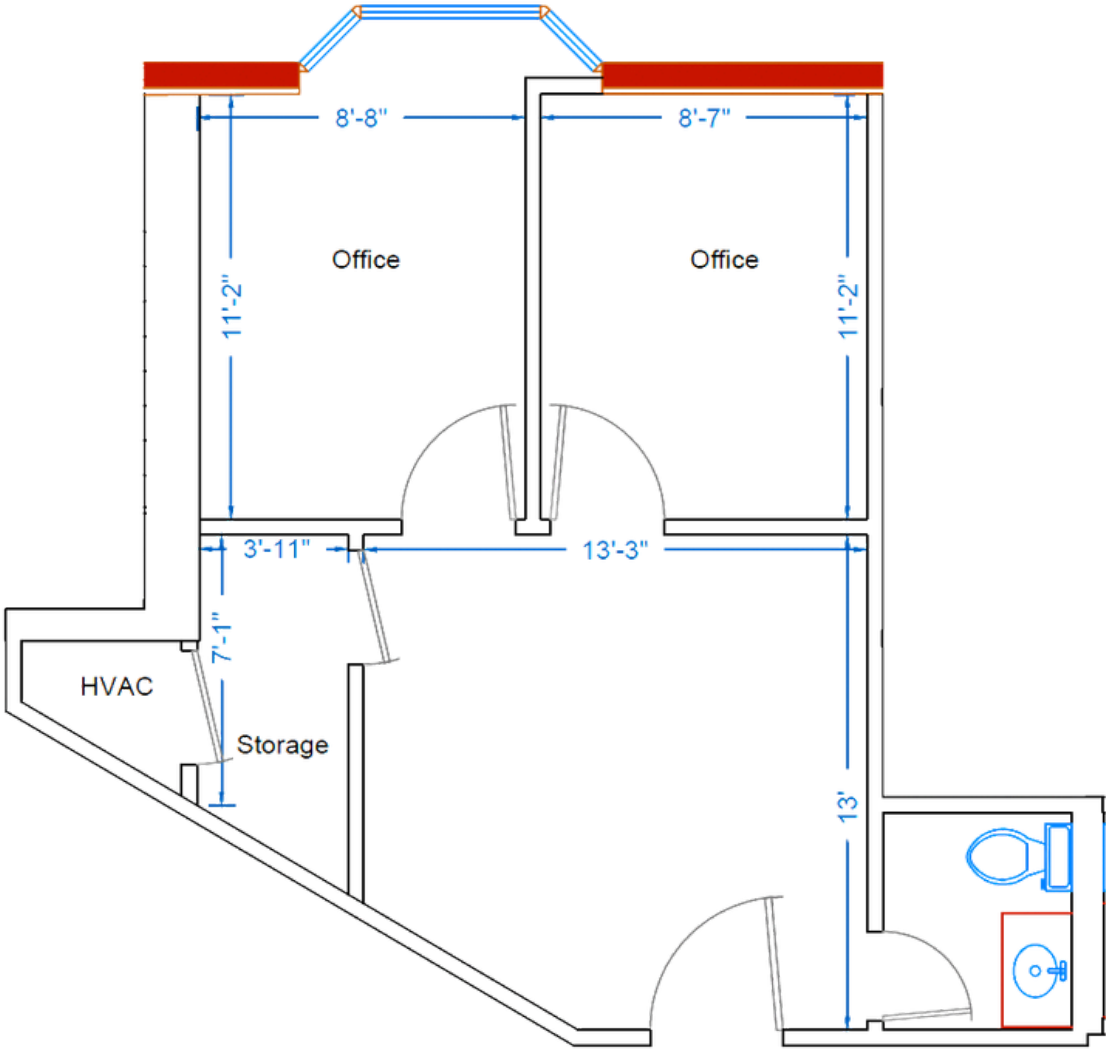
# 600 N. NORTH COURT

SUITE 120 | 651 RSF



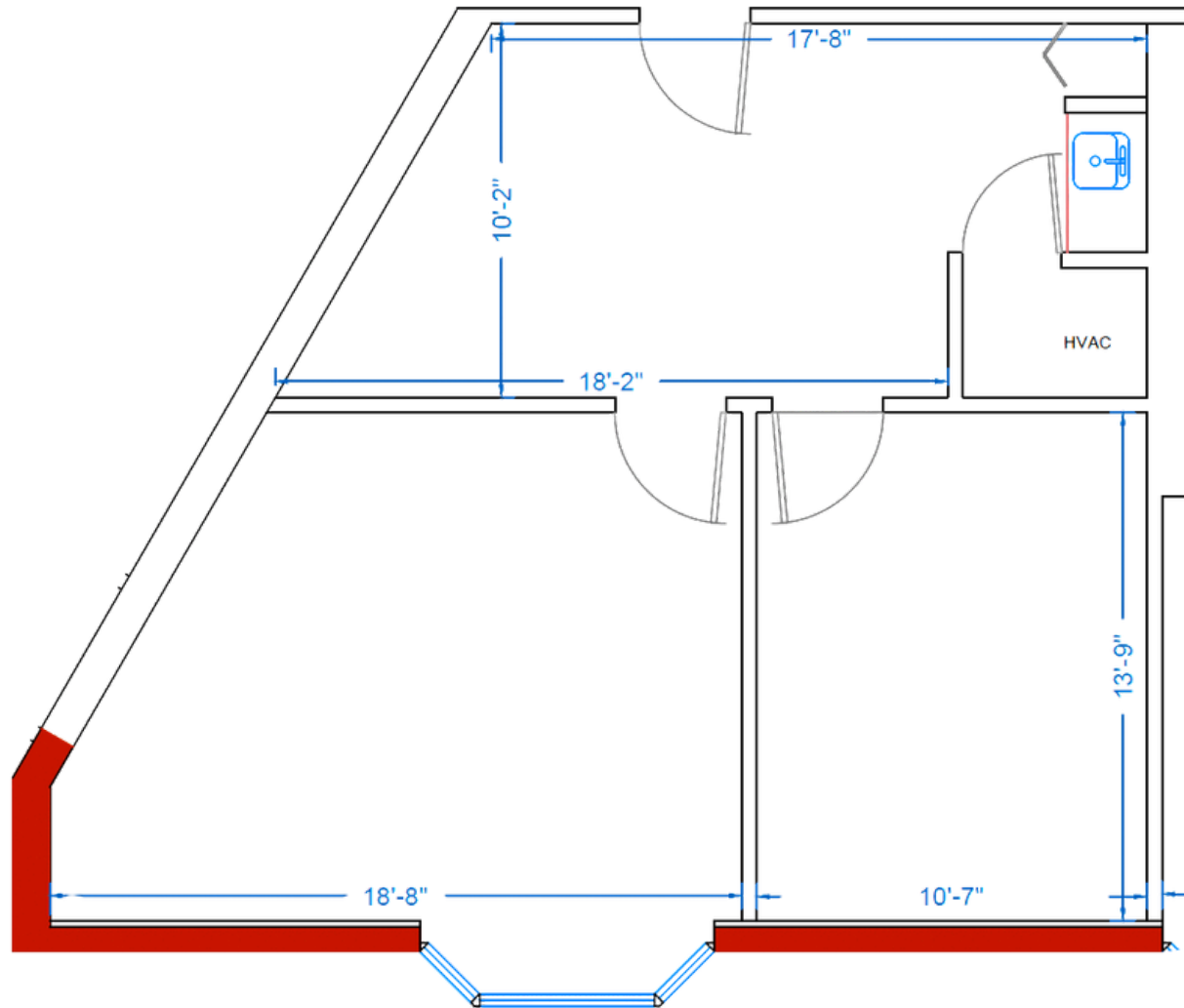
# 600 N. NORTH COURT

SUITE 230 | 591 RSF



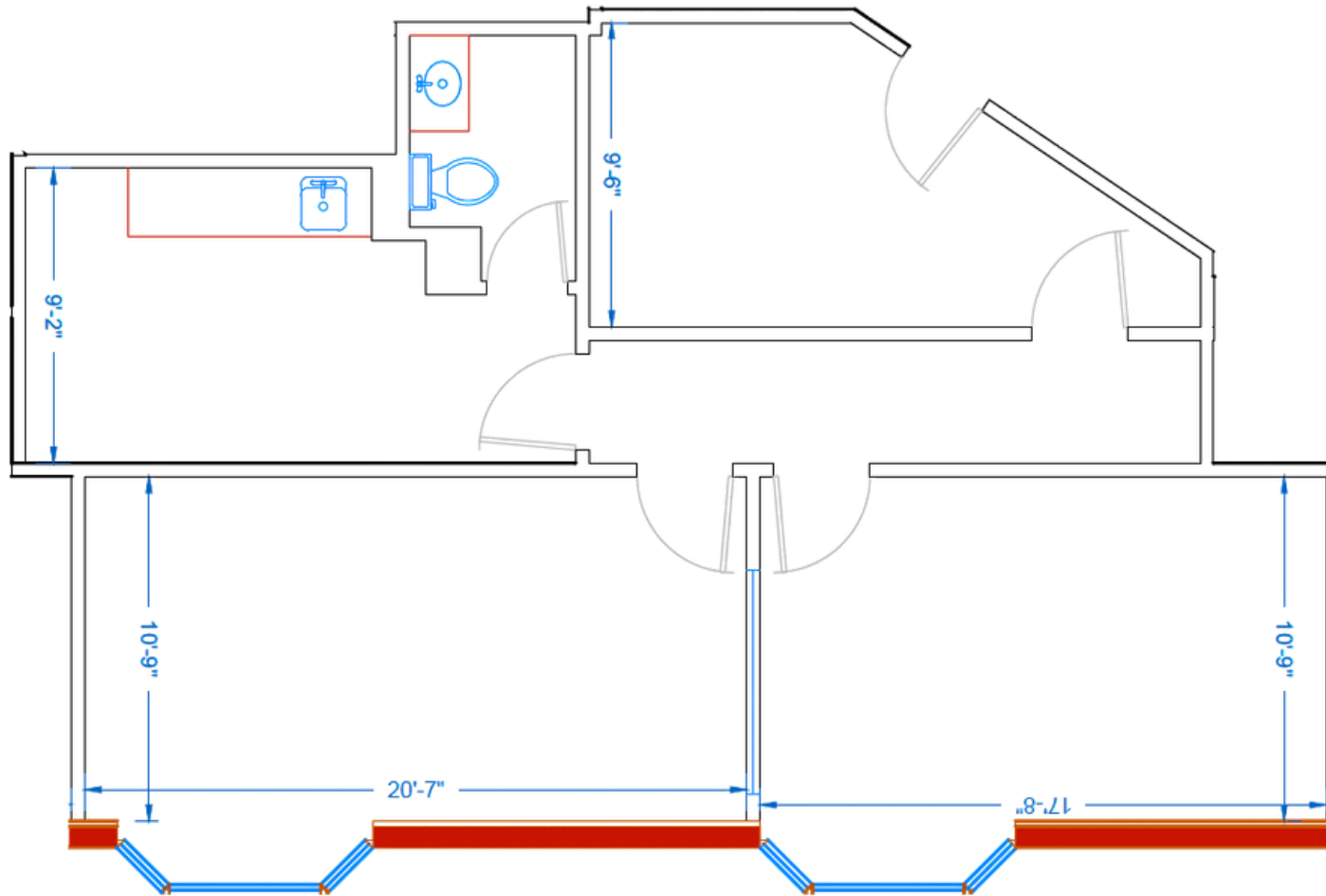
# 616 N. NORTH COURT

SUITE 130 | 811 RSF



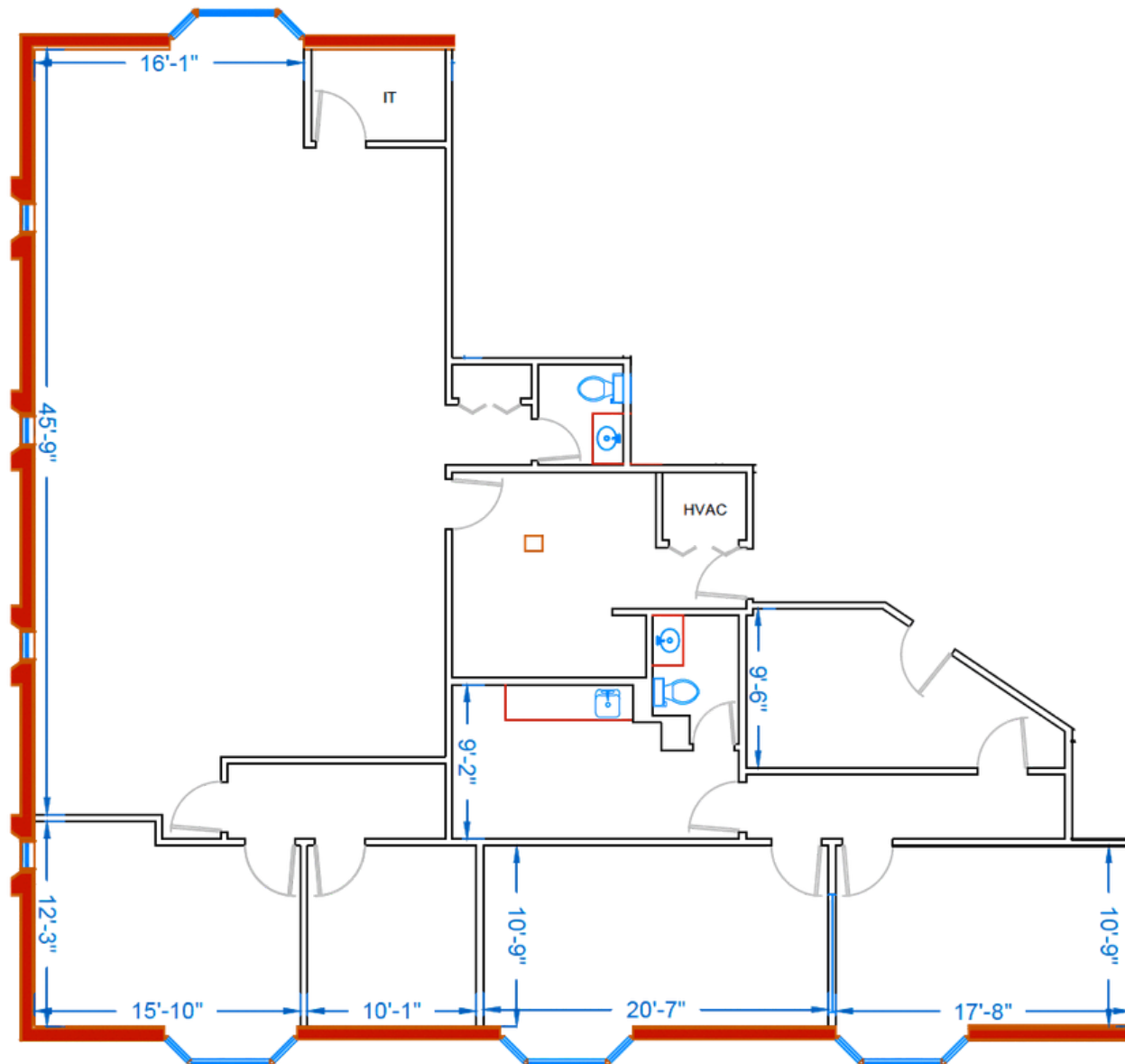
# 616 N. NORTH COURT

SUITE 240 | 1,109 RSF



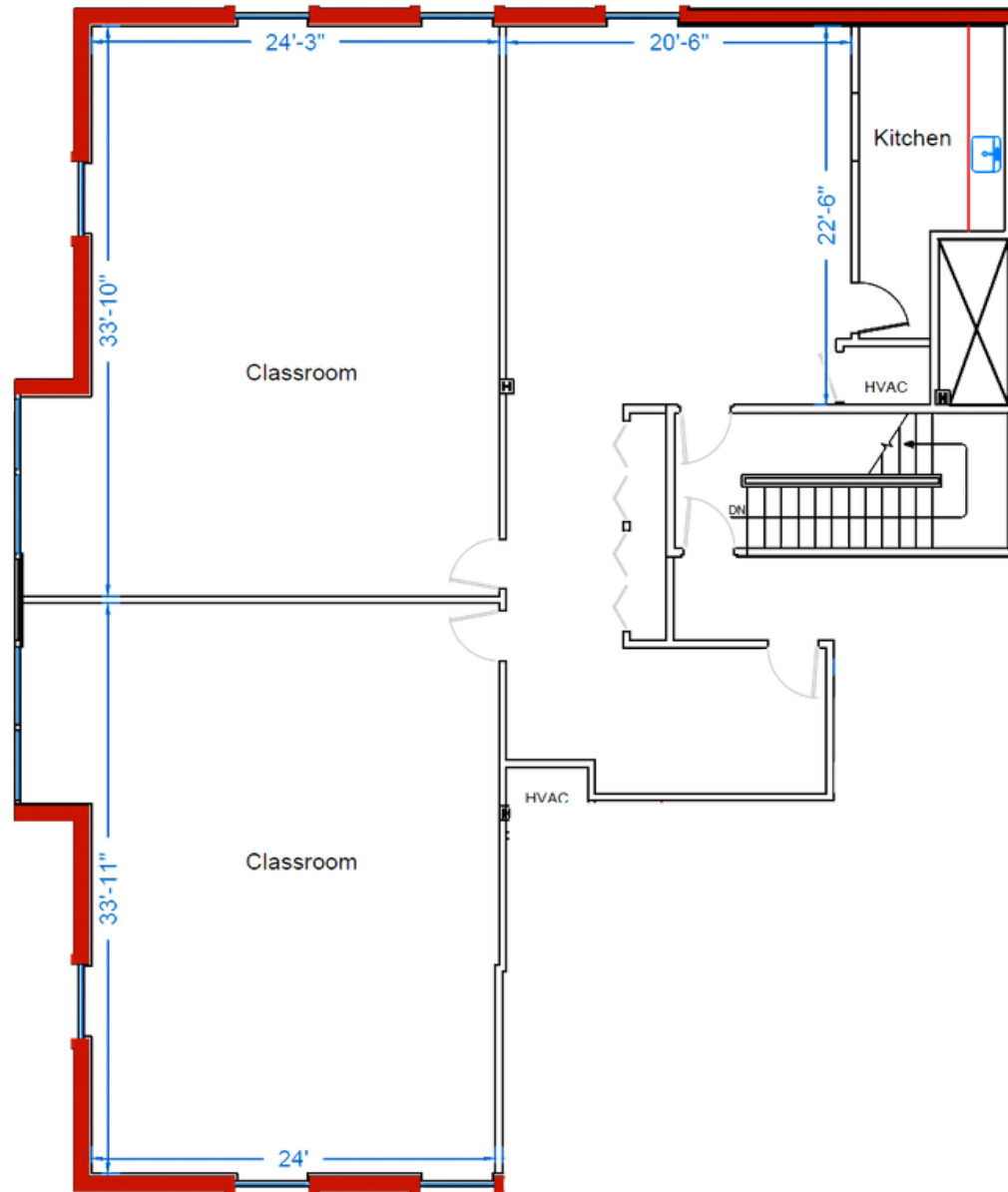
# 616 N. NORTH COURT

SUITE 240 & 250 | 3,367 RSF



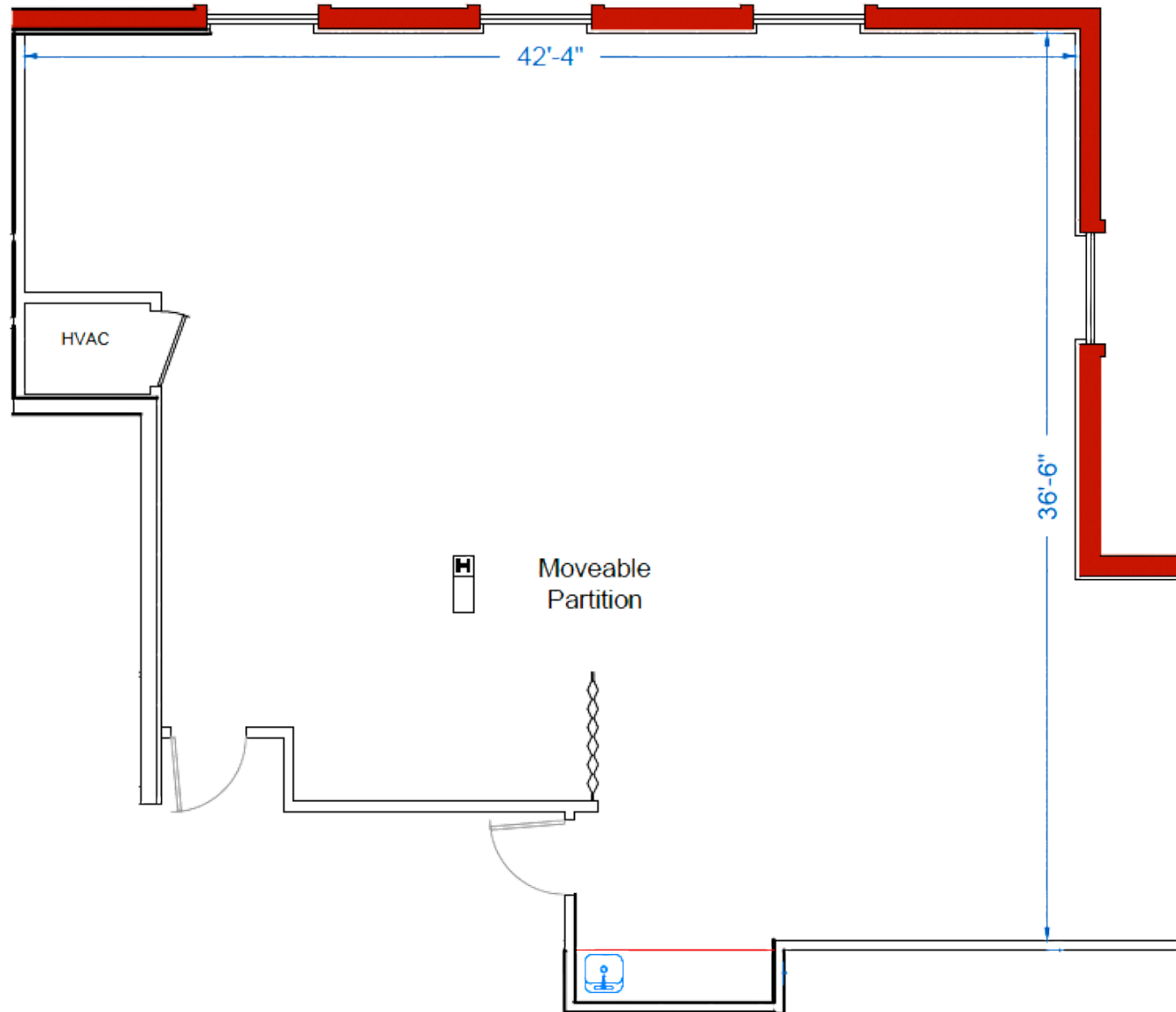
# 625 N. NORTH COURT

SUITE 305 | 3,549 RSF



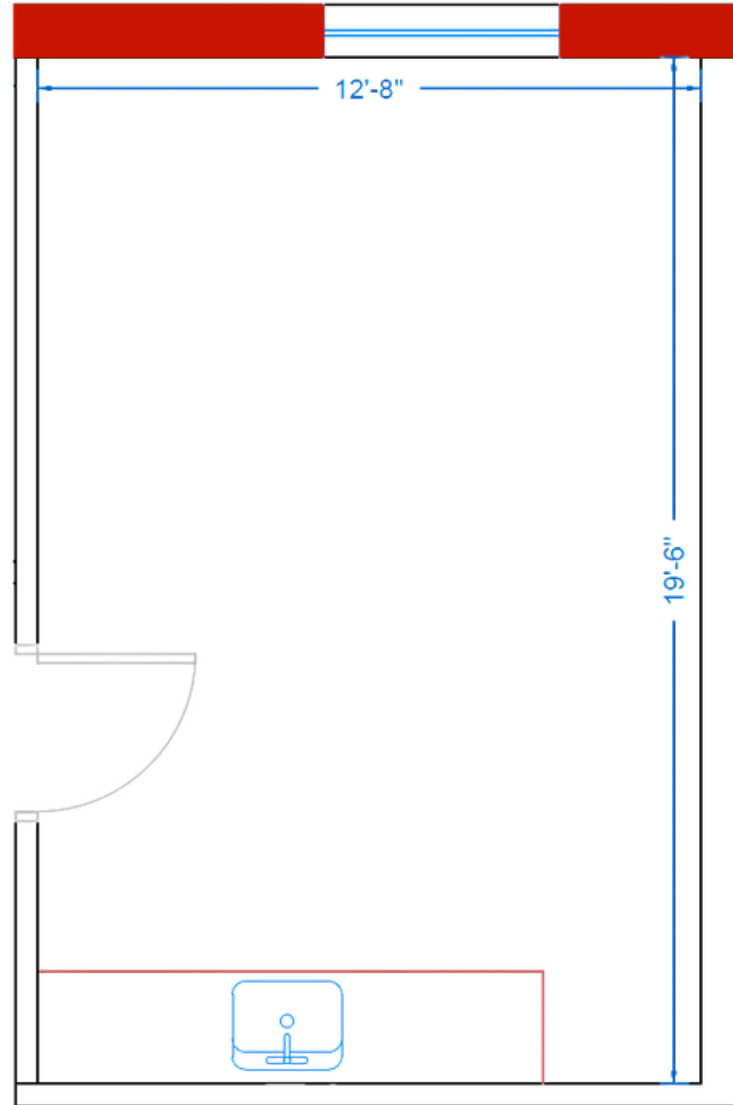
# 625 N. NORTH COURT

SUITE 320 | 1,879 RSF



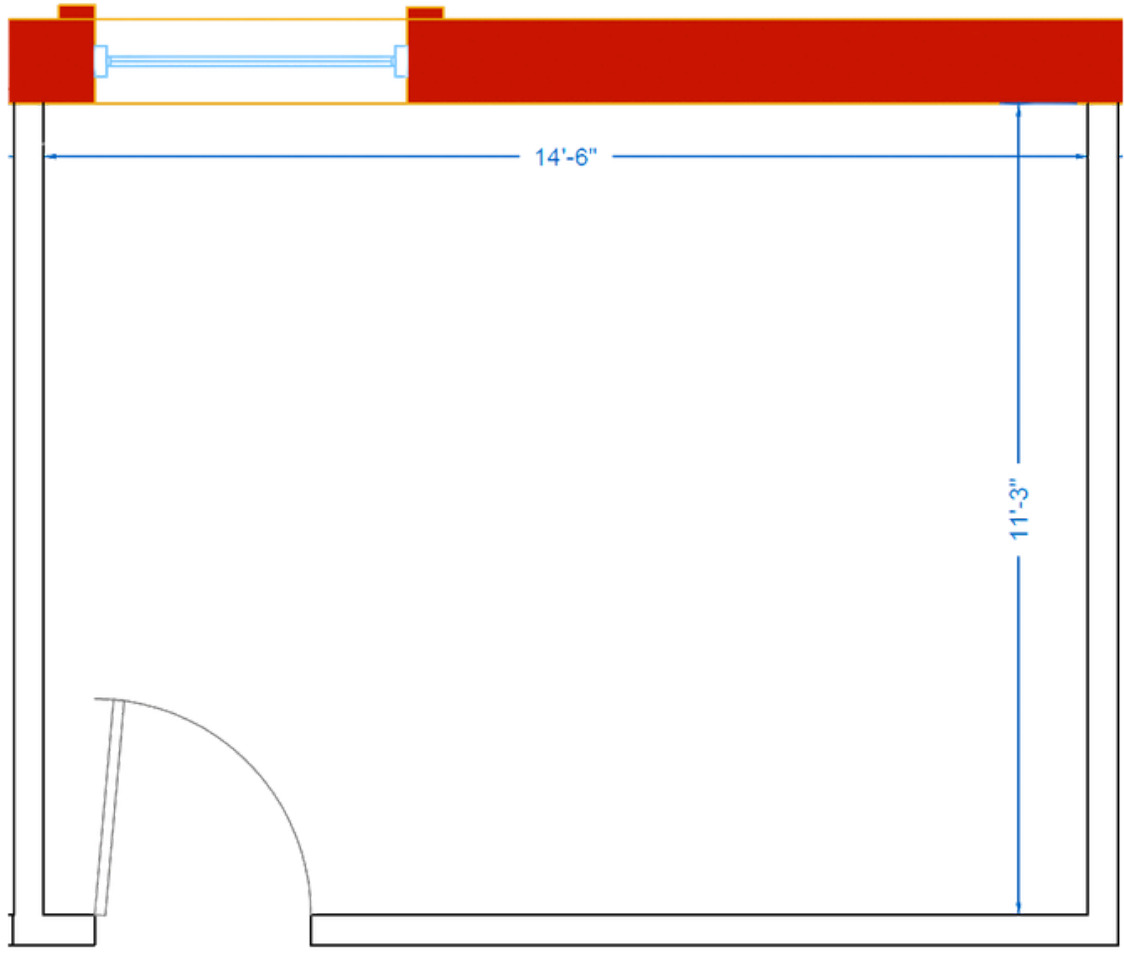
# 630 N. NORTH COURT

SUITE 140 | 315 RSF



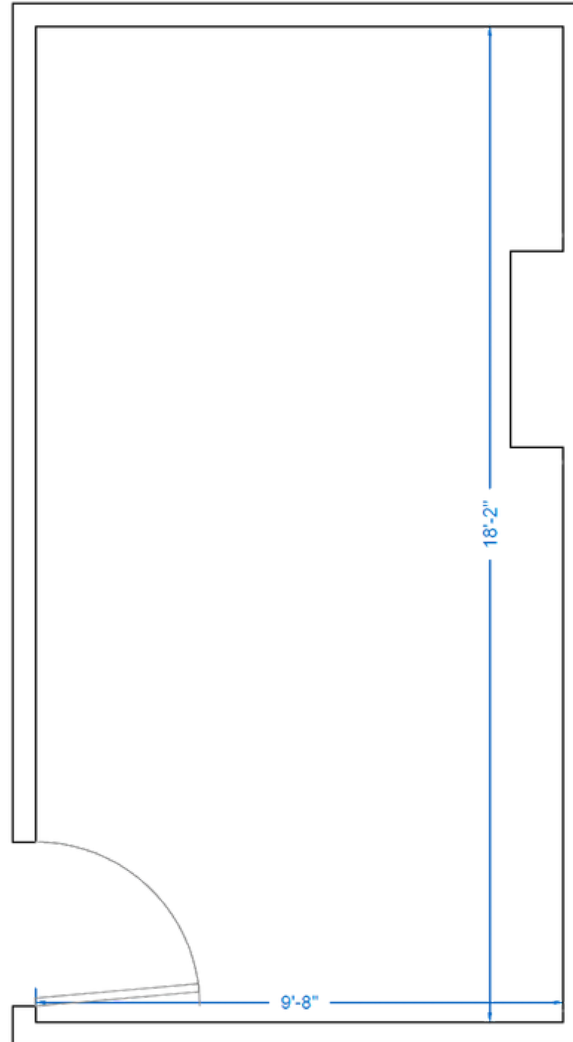
# 675 N. NORTH COURT

SUITE 205 | 314 RSF



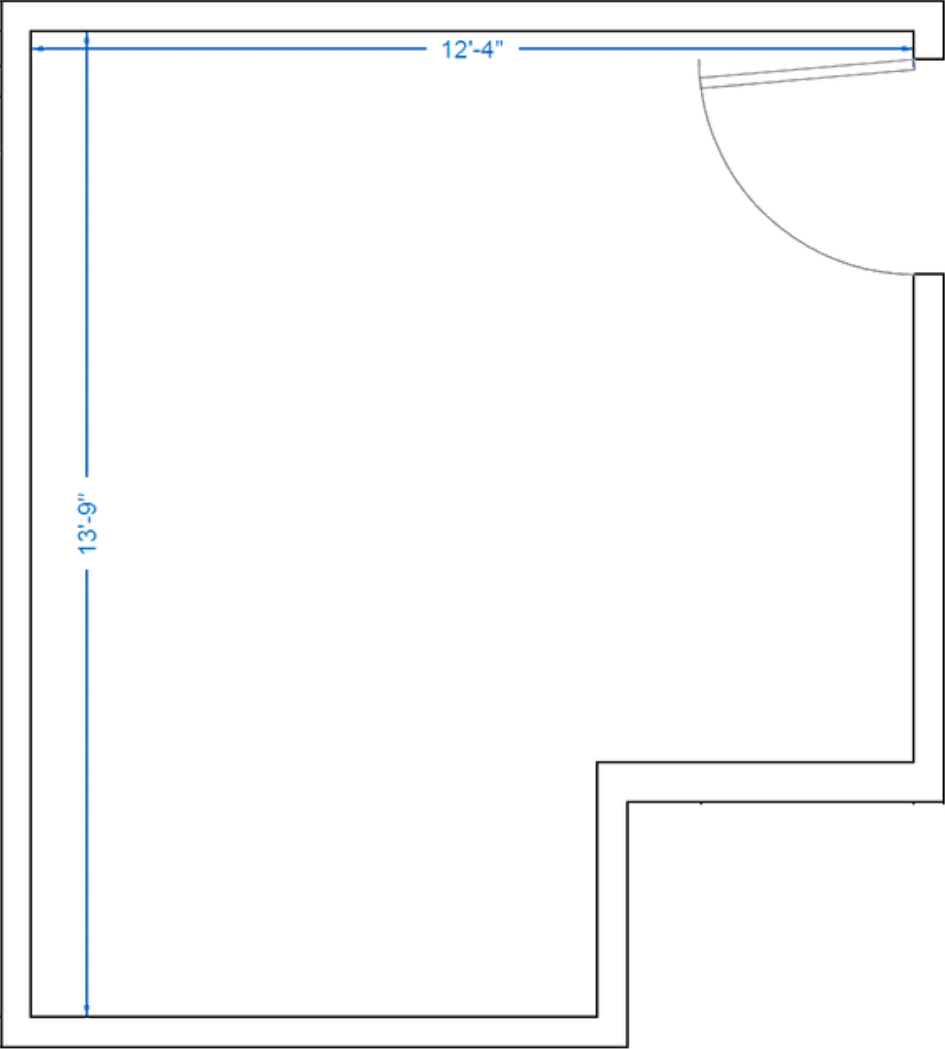
# 675 N. NORTH COURT

SUITE 222 | 311 RSF



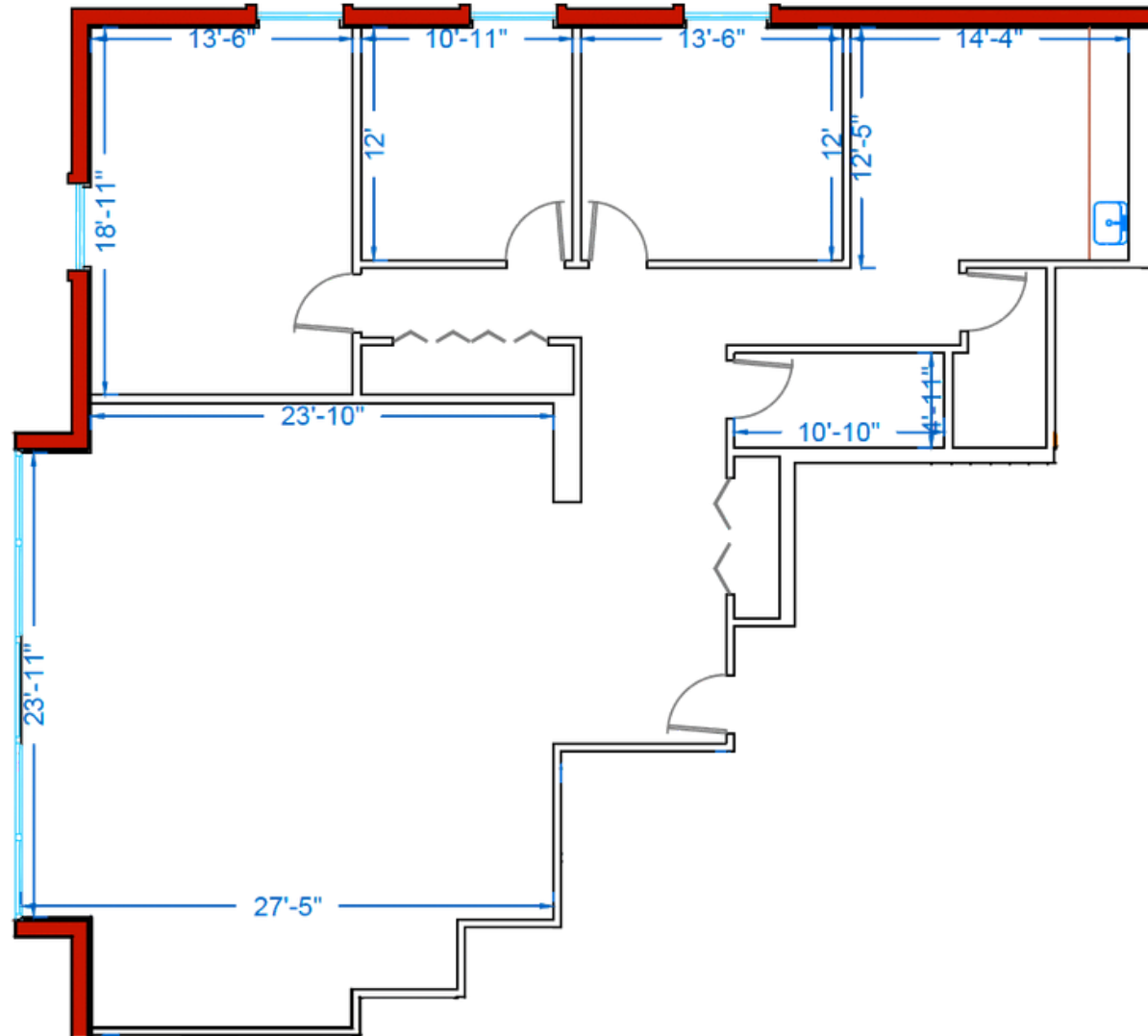
# 675 N. NORTH COURT

SUITE 272 | 274 RSF



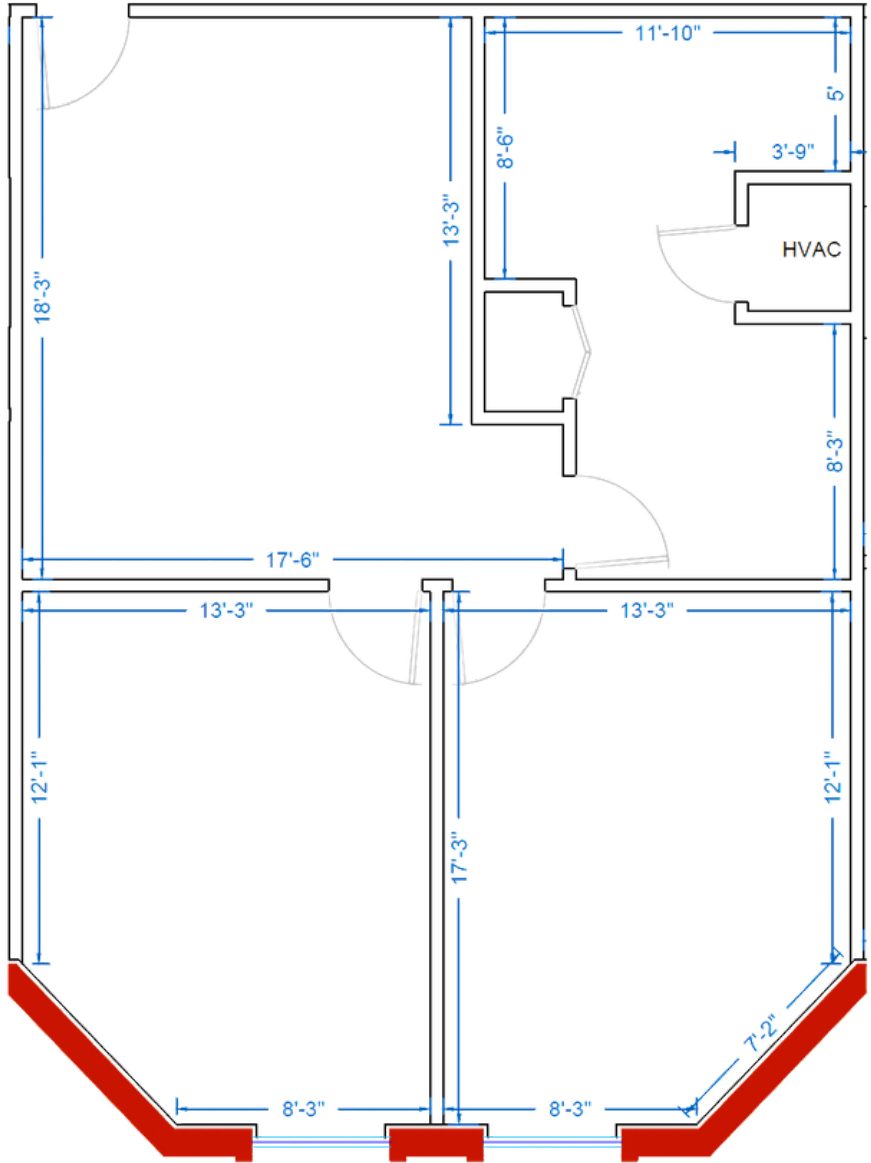
# 675 N. NORTH COURT

SUITE 300 | 2,657 RSF



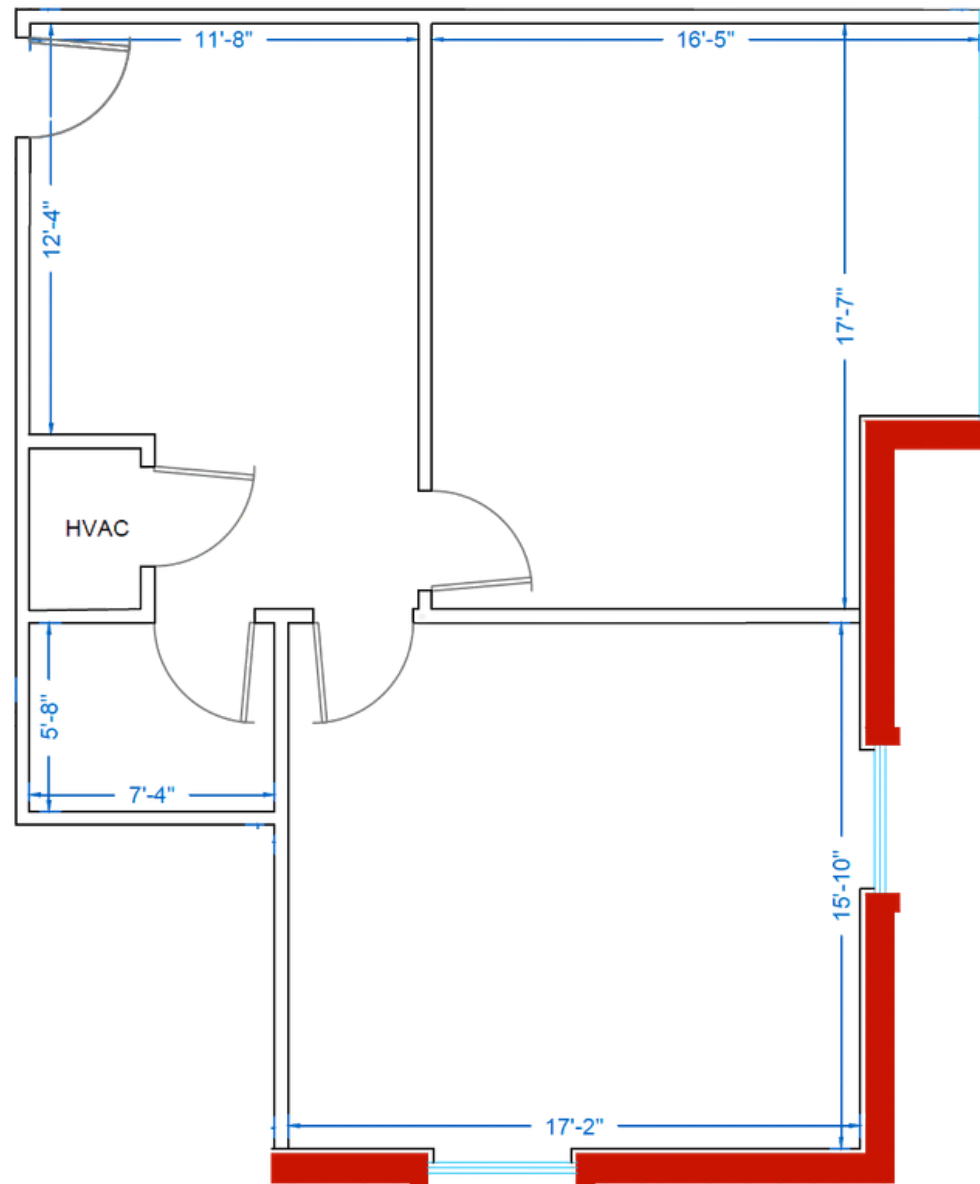
# 675 N. NORTH COURT

SUITE 320 | 1,213 RSF



# 675 N. NORTH COURT

SUITE 360 | 1,068 RSF



# CONTACT

**RYAN MOATS**

Owner & Operator

847.363.9700

Ryan@MoatsOffice.com

[www.MoatsOffice.com](http://www.MoatsOffice.com)

TO LEARN MORE, VISIT OUR  
WEBSITE OR SCAN OUR QR CODE:



# ABOUT US

For over 32 years, **Moats Office Properties** has owned and operated office buildings in Chicago's Northwest suburbs.

We are a family owned and operated business and strive for the best in customer satisfaction.