

111

CENTRAL PARK NORTH

BETWEEN MALCOLM X BLVD & ADAM CLAYTON POWELL
HARLEM



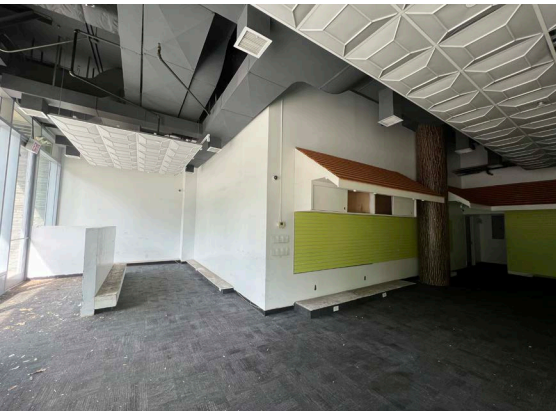
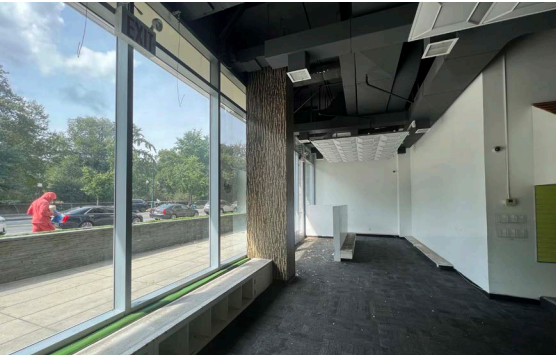
111

CENTRAL PARK NORTH

BETWEEN MALCOLM X BLVD & ADAM CLAYTON POWELL
HARLEM

PROPERTY HIGHLIGHTS

- Large Space and Great Visibility
- High Ceilings with HVAC in place
- Located next to 110th Street 2 & 3 Subway
- Directly across from Central Park
- Dense Residential and Commercial Area
- Great For Coffee, Café, Cleaners and Service Related Business



SIZE: 1,550 SF

FRONTAGE: 40'

CEILING HEIGHT: 15'

POSSESSION: Immediate

TRANSPORTATION: 2 3

NEIGHBORS:

DUNKIN'

SUBWAY

FINE & FARE

MAC LIQUORS

CONTACT OUR BROKERS FOR MORE INFORMATION:

BRENT LEGUNN
BLegunn@ksrny.com

917.797.1231

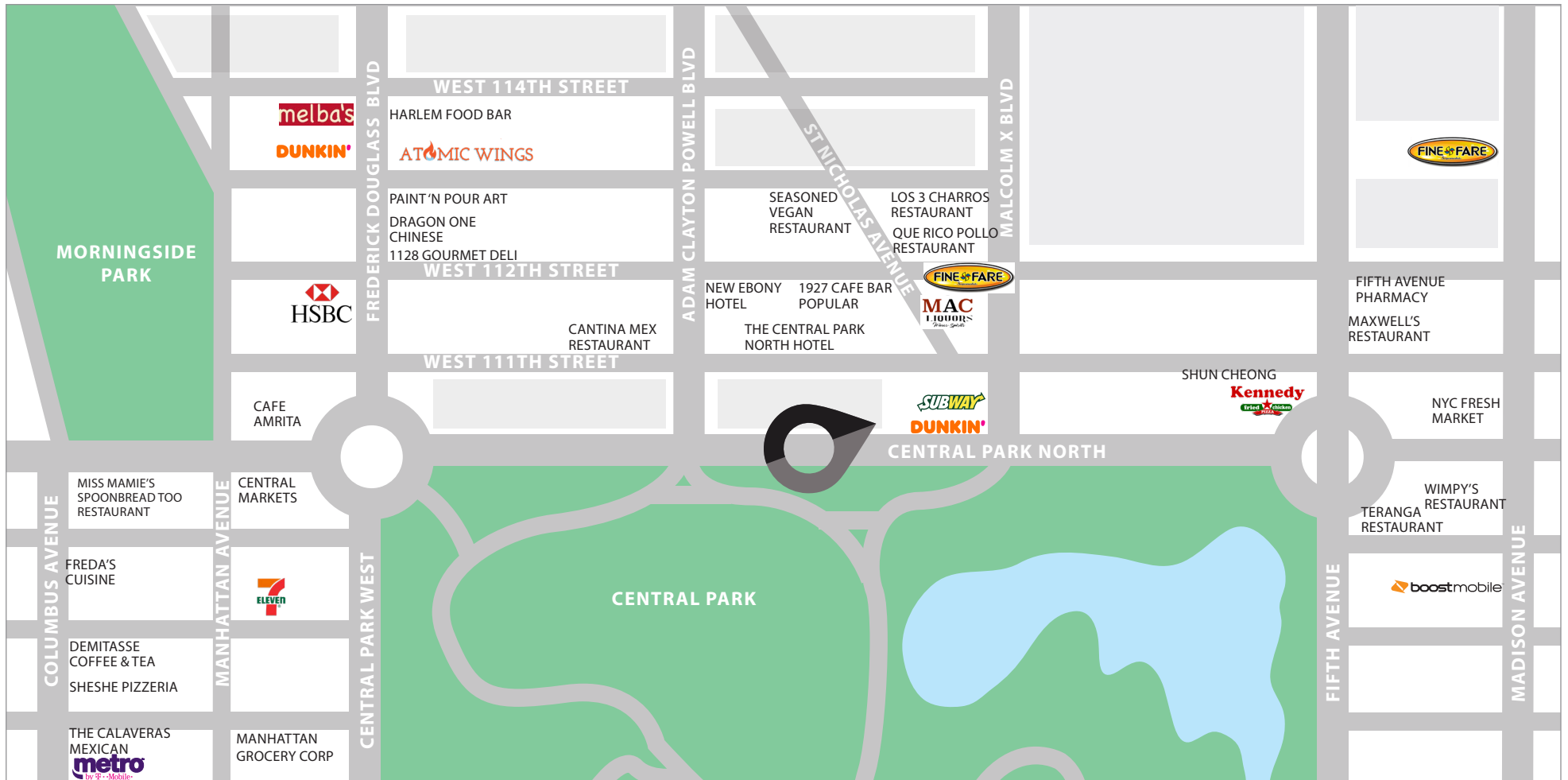


All information supplied in this marketing presentation and/or flyer is from sources deemed reliable and is furnished subject to errors, omissions, modifications, removal of listings from sale/lease and to any listing condition. Any square footage, dimensions, floor plans and/or technical data set forth are approximations and are subject to further elaboration/confirmation.

111

CENTRAL PARK NORTH

BETWEEN MALCOLM X BLVD & ADAM CLAYTON POWELL
HARLEM



CONTACT OUR BROKERS FOR MORE INFORMATION:



All information supplied in this marketing presentation and/or flyer is from sources deemed reliable and is furnished subject to errors, omissions, modifications, removal of listings from sale/lease and to any listing condition. Any square footage, dimensions, floor plans and/or technical data set forth are approximations and are subject to further elaboration/confirmation.

BRENT LEGUNN
BLegunn@ksrny.com

917.797.1231

111

CENTRAL PARK NORTH

BETWEEN MALCOLM X BLVD & ADAM CLAYTON POWELL
HARLEM




AKSR
RETAIL FOR
917.21
Sholom Kanevsky

AKSR
SPACE LEASE
0.1101
Brent LeGunn

RIDE CENTRAL PARK AND MORE

RIDE IN STYLE IN NEW YORK

ENJOY YOUR EXPERIENCE WITH US



Download the App

Scan the QR Code

AKSR
RETAIL FOR
917.21
Sholom Kanevsky

AKSR
SPACE LEASE
0.1101
Brent LeGunn