

## MEDICAL/PROFESSIONAL SPACES FOR LEASE

# WEST ORANGE, NJ

## 95 NORTHFIELD AVENUE

### AVAILABLE SPACES

#### First Floor

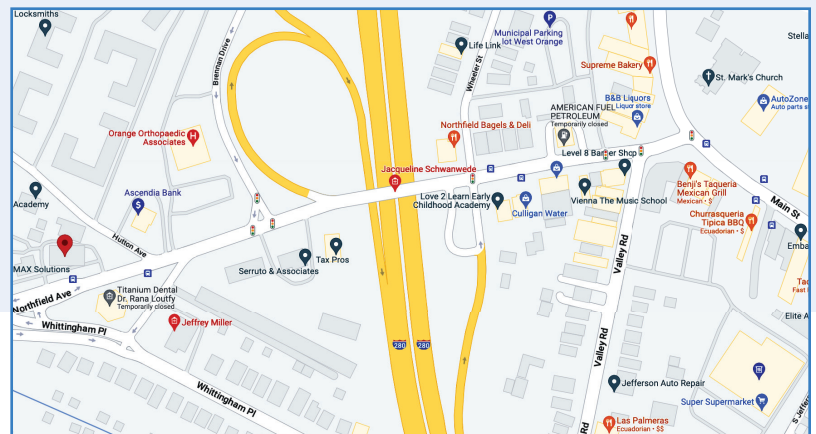
- +/- 2500 sf (divisible)
- 7 exam rooms with sinks
- 2 private offices
- 3 private restrooms
- Break room, admin area, reception area

#### Second Floor

- +/- 2500 sf (divisible)
- 6 exam rooms w/ sinks
- Potential for 6 private offices
- 3 private restrooms
- Break room, admin area, reception area

### PROPERTY FEATURES

- +/- 5000 sf office building
- On-site parking
- Monument and building signage
- Close proximity to Route 280, 10, and Main St
- Located at traffic light at Northfield Ave/Whittingham Ave
- [OB-1 Zone](#)



For more information contact:

**JEANNETTE MELILLO**

C: 862.227.6464

O: 973.884.4444 ext. 39

[jmelillo@newmarkrealestate.com](mailto:jmelillo@newmarkrealestate.com)

**JACK MAIER**

C: 862.200.0763

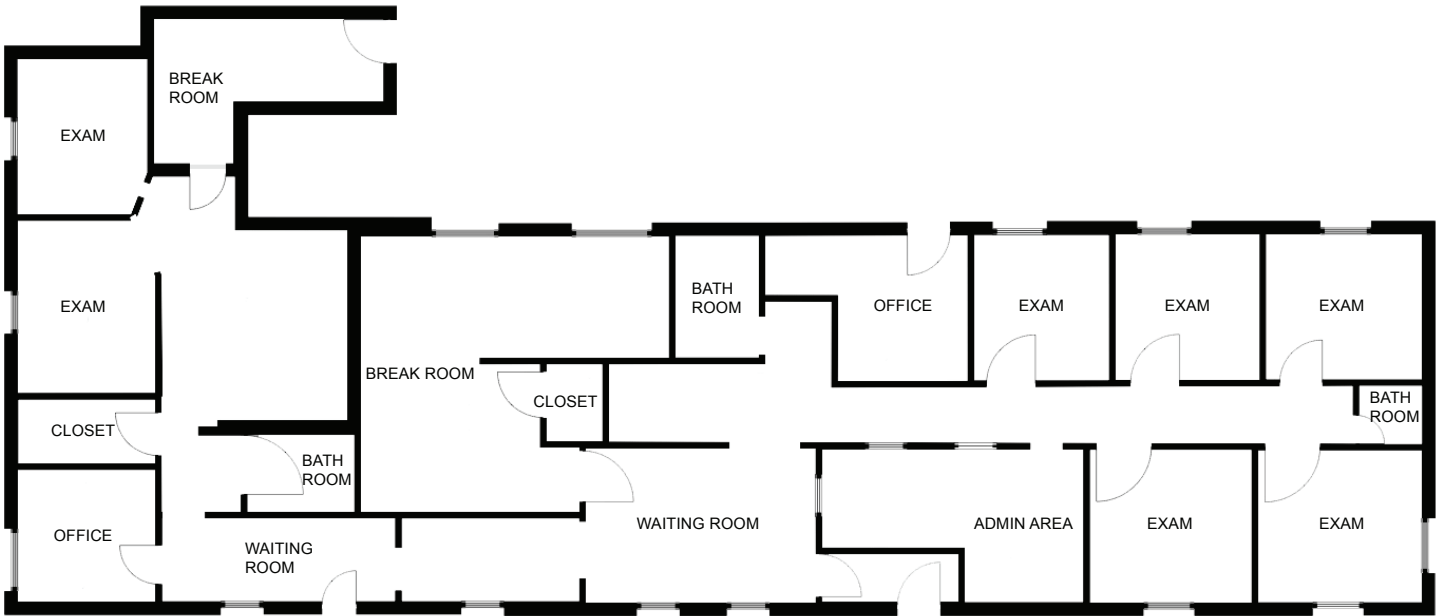
O: 973.884.4444 ext. 32

[jmaier@newmarkrealestate.com](mailto:jmaier@newmarkrealestate.com)

NewmarkRealEstate.com | 973.884.4444 | 7 E. Frederick Place Suite 500 Cedar Knolls New Jersey 07927

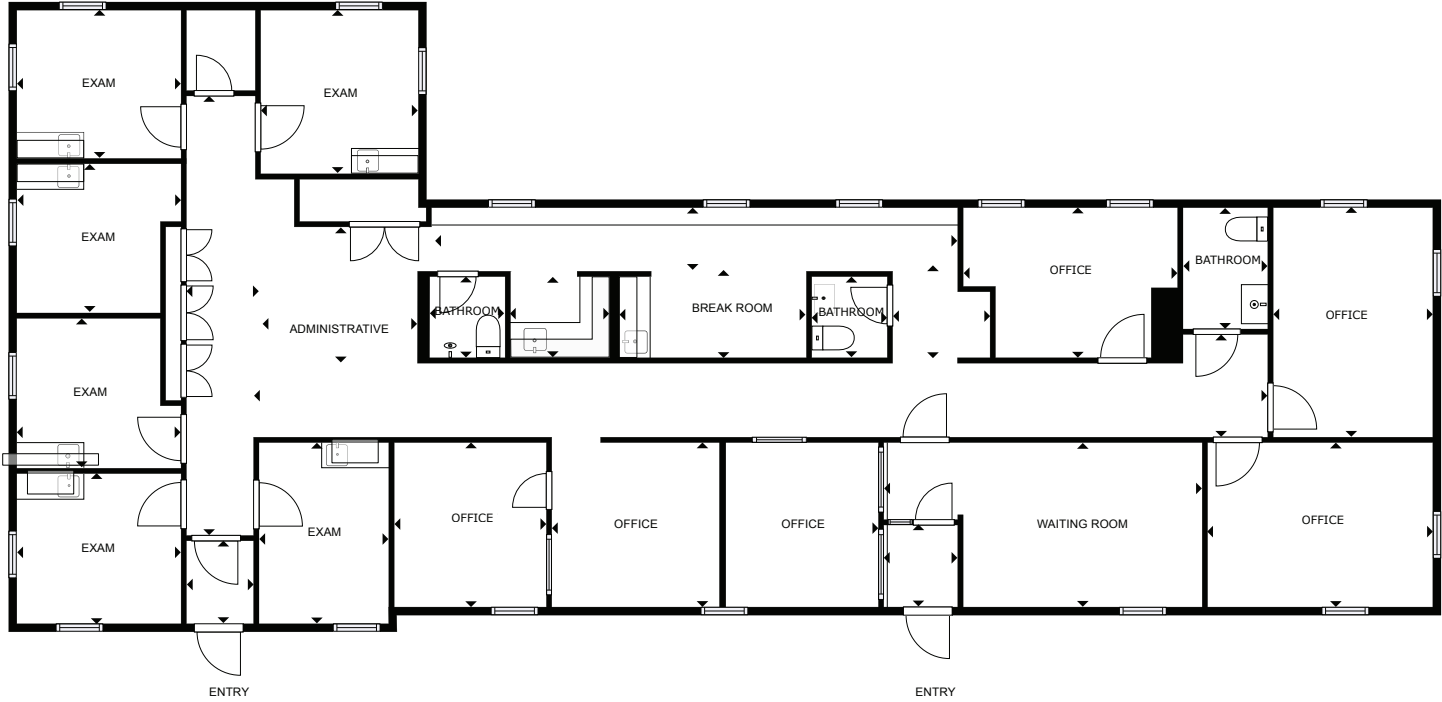
2023 Newmark Associates CRE. Information obtained from sources deemed to be reliable. However, no guarantee, warrant or representation is made as to accuracy of the information presented which is submitted subject to errors, omission, change of price, rental or other conditions, prior sale lease, financing or withdrawal without notice. Projections, opinions, assumptions or estimates are provided for example only, and may not represent current or future performance. Interested parties should consult their tax and legal advisors and conduct a thorough investigation of the property and any prospective transaction.

## FIRST FLOOR FLOOR PLAN



FLOOR PLAN NOT DRAWN TO SCALE

# SECOND FLOOR FLOOR PLAN



FLOOR PLAN NOT DRAWN TO SCALE