



3217 E. PIONEER PARKWAY

SUITE A | 5,820 SF

GRAND PRAIRIE, TEXAS 75050

HIGHLIGHTS

- Situated prominently on E. Pioneer Parkway, this versatile commercial property offers an ideal location for businesses seeking accessibility, visibility, and growth potential. With flexible layouts suitable for retail, service operations, or office use, the property features ample parking, convenient access, and proximity to major thoroughfares, making it perfect for businesses ready to thrive in Arlington.
- 5,820 SF Available
- Office 380 SF
- Flex Space & Storage Opportunities
- 12' Deck Height
- 10' Clear Height
- 5 Grade Level Doors
- Close access to HWY-360



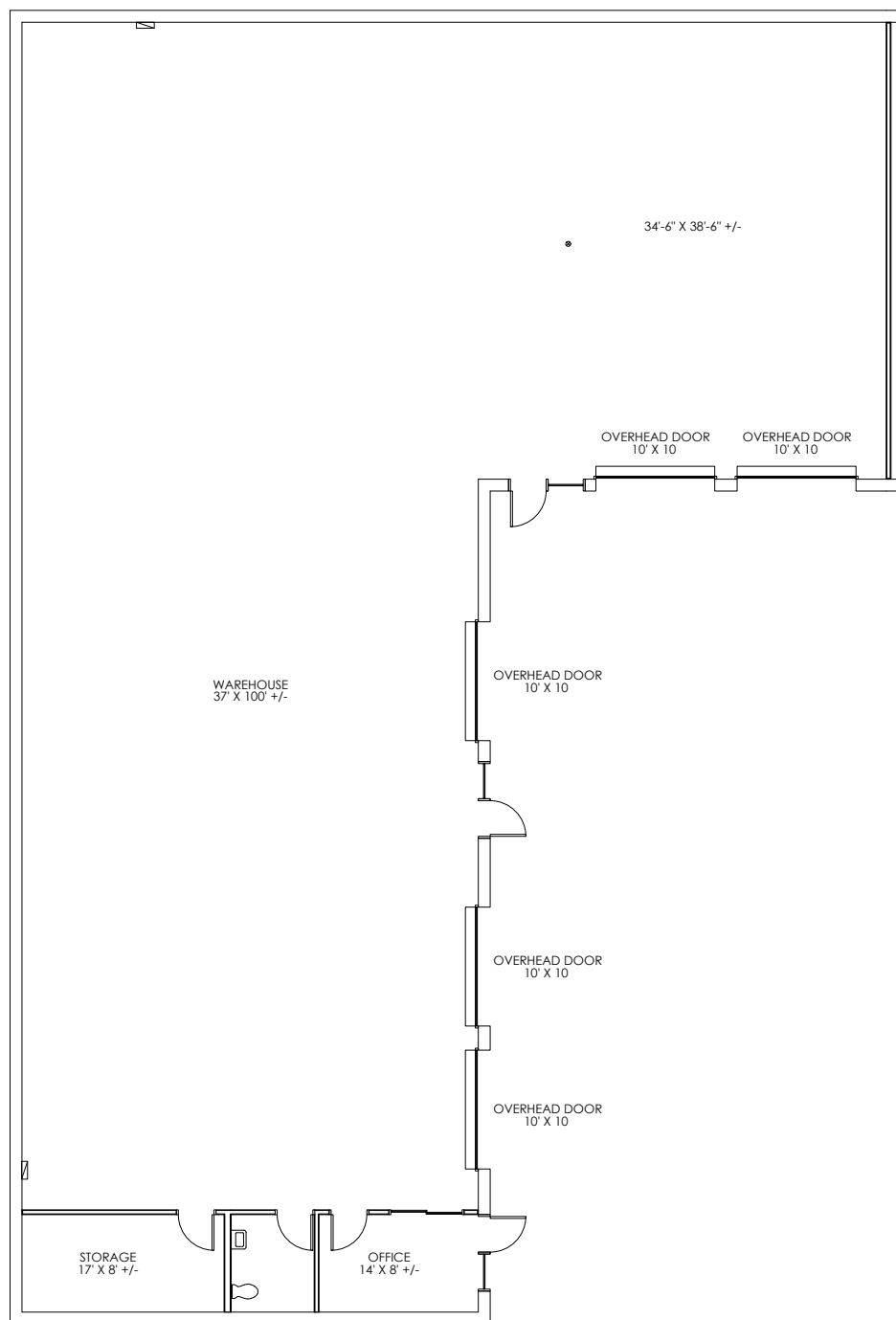
SAM HARRELL
214.305.6720
SAM.HARRELL@STREAMREALTY.COM

GIOVANNI SCARDINO
847.612.8488
GIOVANNI.SCARDINO@STREAMREALTY.COM

3217 E. PIONEER PARKWAY

SUITE A | 5,820 SF

GRAND PRAIRIE, TEXAS 75050



SAM HARRELL
214.305.6720
SAM.HARRELL@STREAMREALTY.COM

GIOVANNI SCARDINO
847.612.8488
GIOVANNI.SCARDINO@STREAMREALTY.COM

