

FOR LEASE
Built Out Medical Suite
1,057 SF

**471 W. Army Trail,
Suite 473-104
Bloomington, IL**



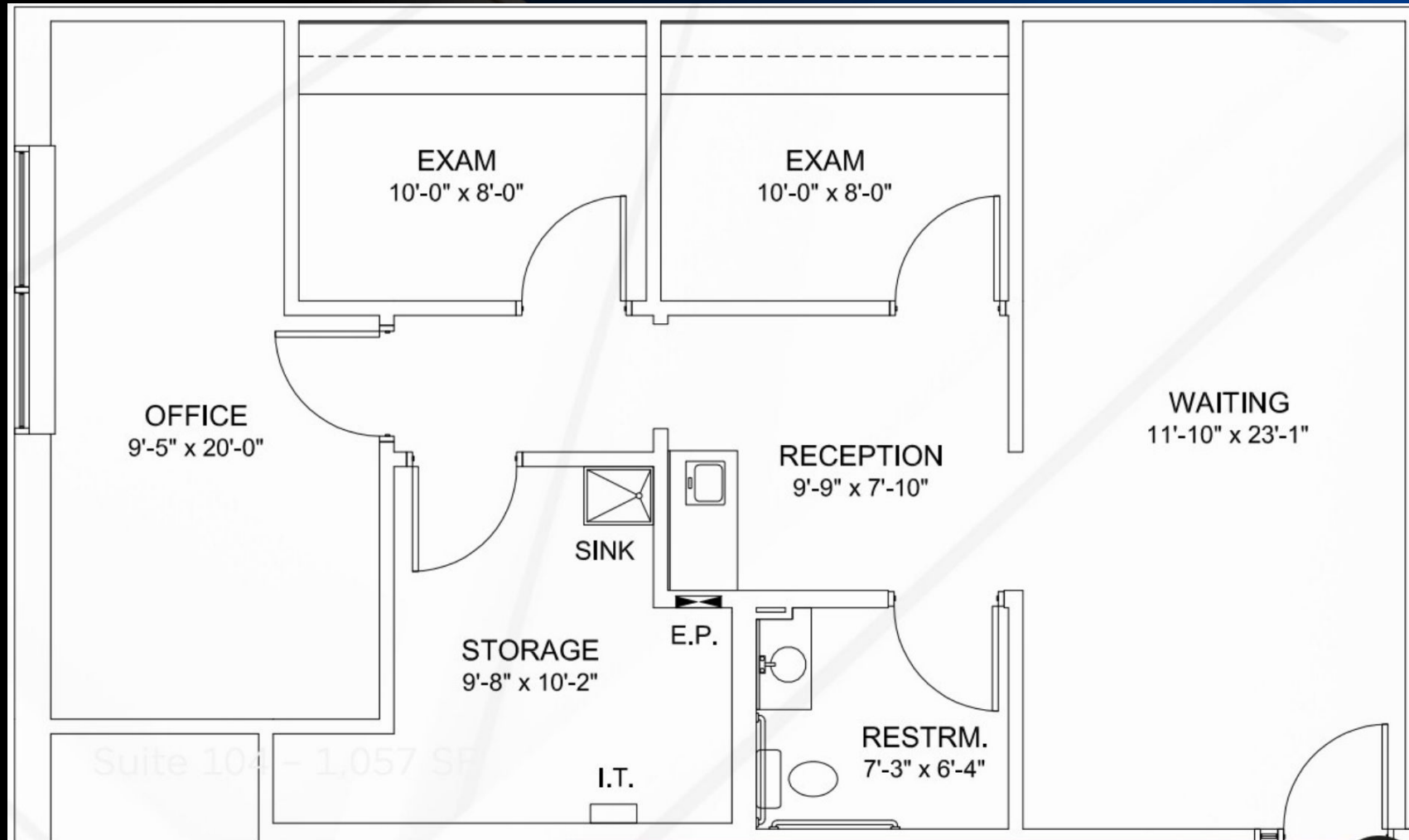
Mark Brodson – Designated Managing Broker
Resource Commercial Advisors
773-251-3666
mark@resourcecommercial.net

Jack Reardon – Senior Vice President
NAI Hiffman
630-693-0647
jreardon@hiffman.com

Features:

- Built-out medical office space
- Reception and waiting area
- 2 patient exam rooms
- In-suite restroom
- High traffic location
- Convenient parking
- 1,057 SF space

Floor Plan



Location Highlights

- Located just 3 miles from UChicago Medicine AdventHealth Glen Oaks Hospital
- 30,000 Vehicles per day
- Single -story medical building with “High Visibility” signage exposure
- Convenient off-street parking with wheelchair accessible spaces



Disclaimer

The information contained in the memorandum has been obtained from sources we believe to be reliable; however, Resource Commercial Advisors, or any of their officers, employees, or agents, has not verified, and will not verify any of the information contained herein and makes no warranty or representation whatsoever regarding the accuracy or completeness of the information provided. This memorandum does not purport to be all-inclusive or to contain all the information which prospective lessee or purchaser may desire. References to square footage or age are approximate. No legal liability is assumed or shall be implied with respect thereto. The owner expressly reserves the right at its sole discretion to reject any or all proposals or expressions of interest in the property and to terminate discussions with any party at any time with or without notice.

Agency Disclosure

Mark Brodson of Resource Commercial Advisors and Jack Reardon of NAI Hiffman are acting solely on behalf of the Owner or Lessor of the real estate and any information given to the Licensees by the Owner/Lessor may be disclosed to the Tenant//Lessee.



Mark Brodson – Designated Managing Broker
Resource Commercial Advisors
773-251-3666
Mark@resourcecommercial.net

Jack Reardon – Senior Vice President
NAI Hiffman
630-693-0647
jreardon@hiffman.com

471 W. Army Trail, Bloomingdale, IL