

FOR LEASE

**5101
CROOKSHANK**

RETAIL STOREFRONT/
WAREHOUSE SPACE AVAILABLE

KOI AUTO PARTS

CONTACT US TODAY



513-784-1776



DWYERCRE.COM

DWYER

Commercial Real Estate LLC



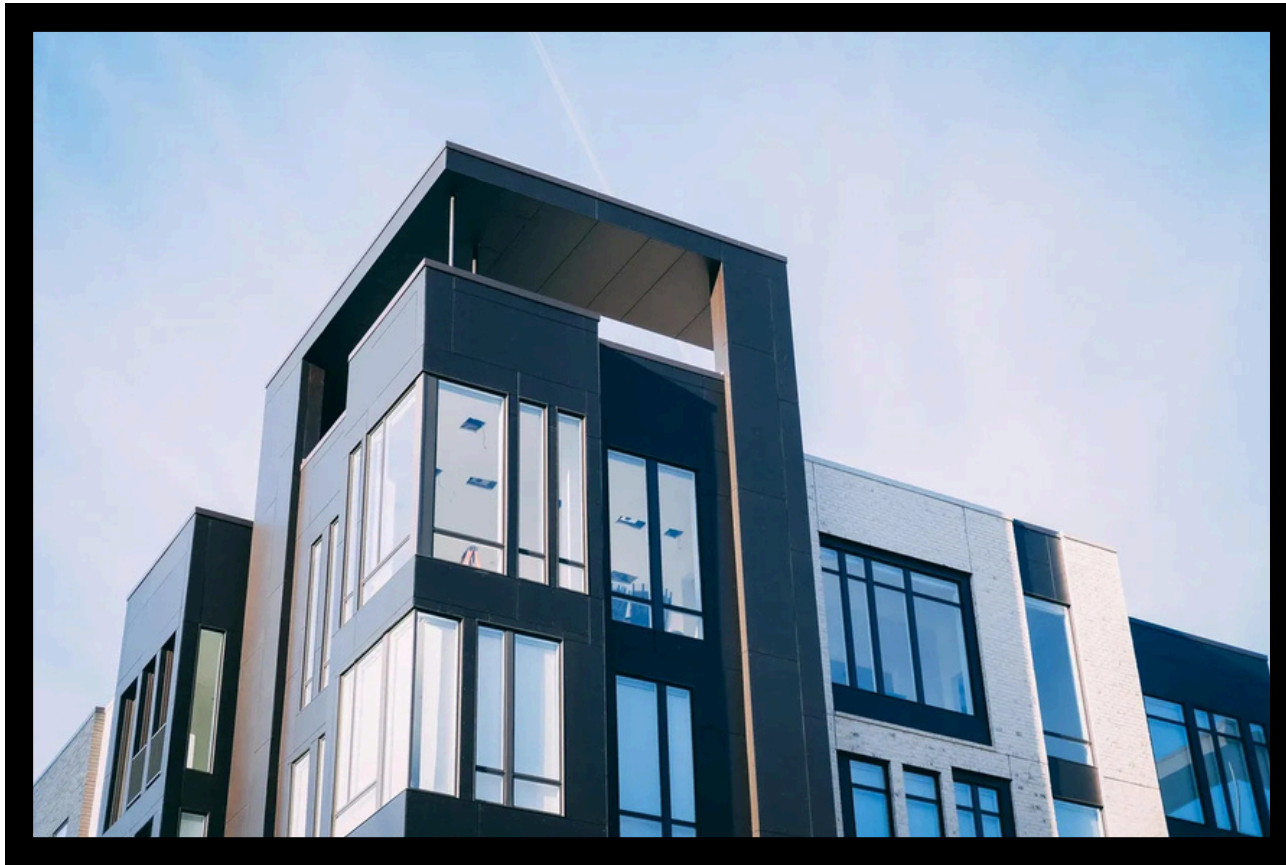
Building description
6,900 +/- Total SF
14' to 16' Clear Height
(2) 10' Drive in Doors
Excellent Retail Location
17,900 VPD (Glenway and Crookshank)
Former KOI Auto Parts

\$9.95 per SF + \$1.81 NNN

Adjacent to Glenway Commercial Corridor







CONTACT US

Matt Morris
Vice President

513-532-4909

MMorris@DwyerCRE.com

John Dwyer
President

513-784-1776

JFDwyer52@gmail.com

Zach Timon
Sales Associate

513-633-9191

ZTimon@DwyerCRE.com

DWYERCRE.COM

DWYER

COMMERCIAL REAL ESTATE LLC

The information contained herein
has been obtained from sources
we deem reliable. We have no
reason to doubt but don't
guarantee its accuracy