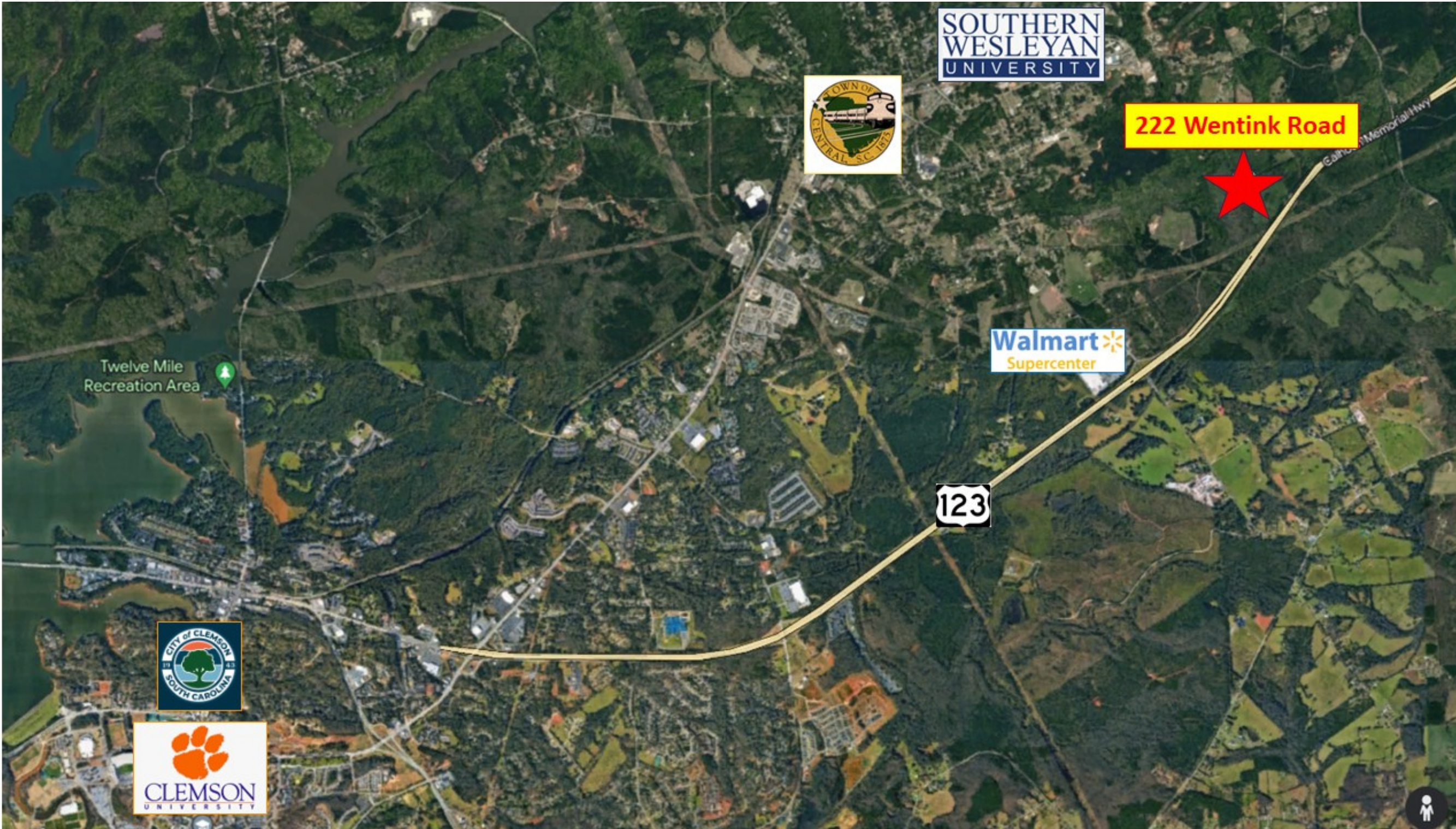


# 87 ACRES FOR SALE

222 Wentink Road, Central, SC 29630

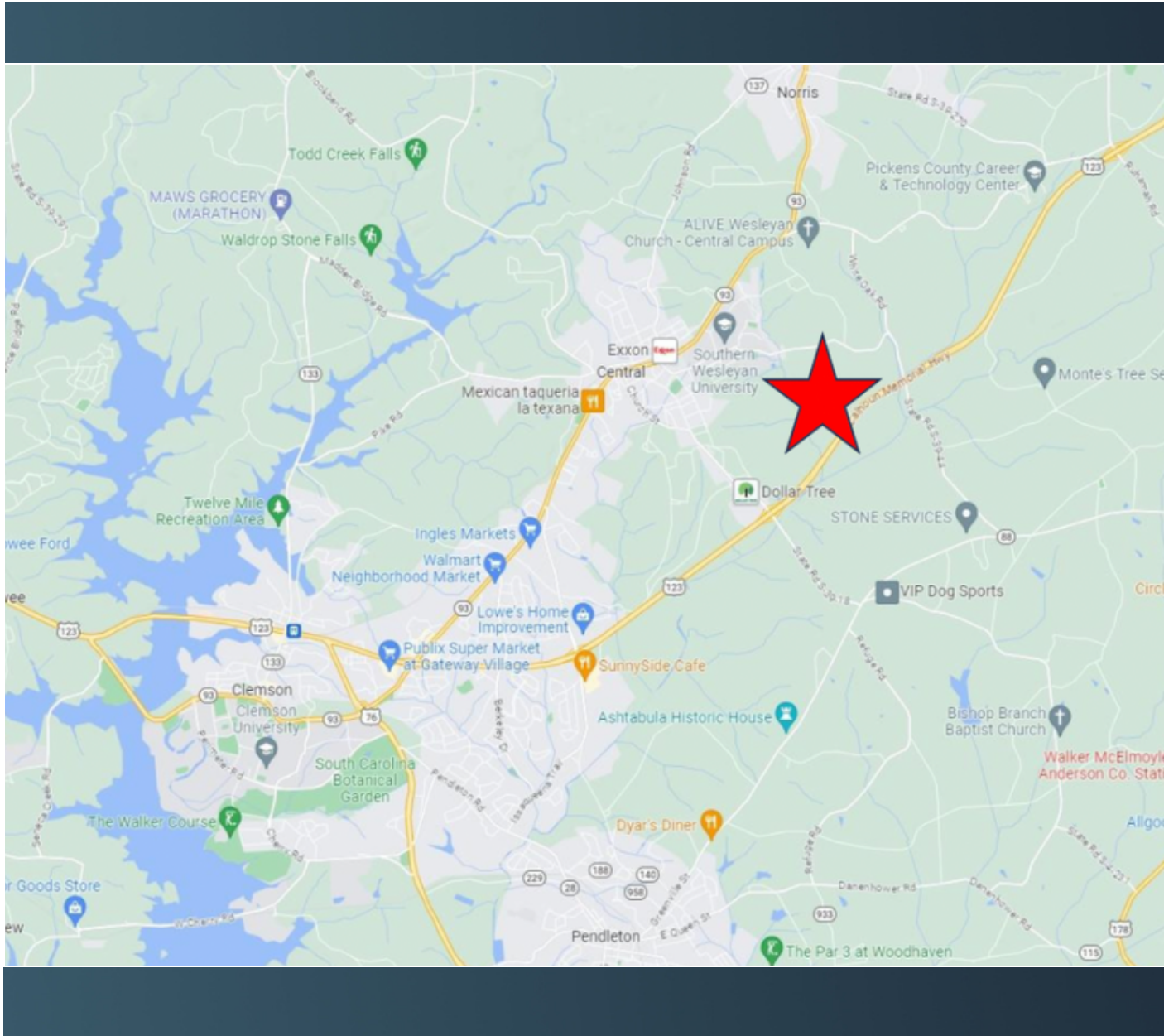


### Laurens Nicholson, CCIM, SIOR

Principal | Broker  
D: 864.271.9855 | C: 864.270.2706  
lnicholson@windsoraughtry.com

### Matt Brashier

Principal | Broker | Developer  
D: 864.271.9855 | C: 864-906-0363  
mbrashier@windsoraughtry.com



PROPERTY SIZE:	87 Acres
ADDRESS:	222 Wentink Road
CITY:	Central
STATE:	South Carolina
COUNTY:	Pickens
ZONING:	R12
UTILITIES:	Water, Electric, Sewer
PARCEL NUMBER:	4075-00-43-6049

PRICING: \$60,000/AC

- PROPERTY HIGHLIGHTS:
- Easy access to Highway 123
  - Close proximity to the town of Clemson, Clemson University, Easley and Anderson
  - Close proximity to Lake Hartwell and Lake Keowee
  - Retail, Dining and Medical all close by in Central, Clemson and Easley
  - Brand new sewer on property

- DRIVE TIMES:
- Clemson, SC - 7 minutes
  - Easley, SC - 15 minutes
  - Anderson, SC - 20 minutes
  - Greenville, SC - 30 minutes
  - Lake Keowee - 15 minutes
  - Lake Hartwell - 20 minutes
  - I - 85 - 20 minutes

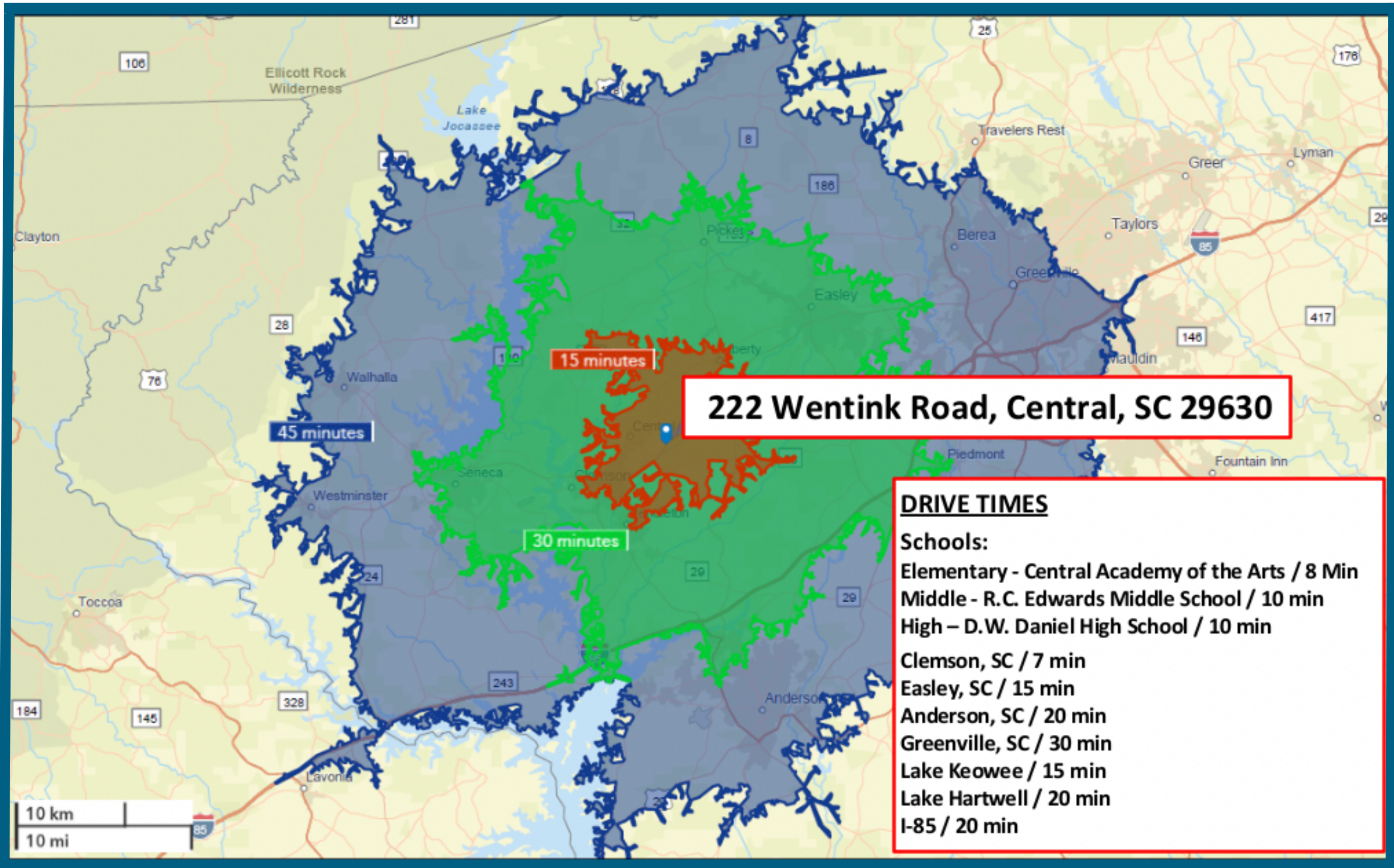
- SCHOOL DRIVE TIMES:
- Elementary - Central Academy of the Arts (8 min)
  - Middle - R.C. Edwards Middle School (10 min)
  - High - D.W. Daniel High School (10 min)

**OFFERING MEMORANDUM**

**87 ACRES FOR SALE**  
 222 Wentink Road, Central, SC 29630

Property Details





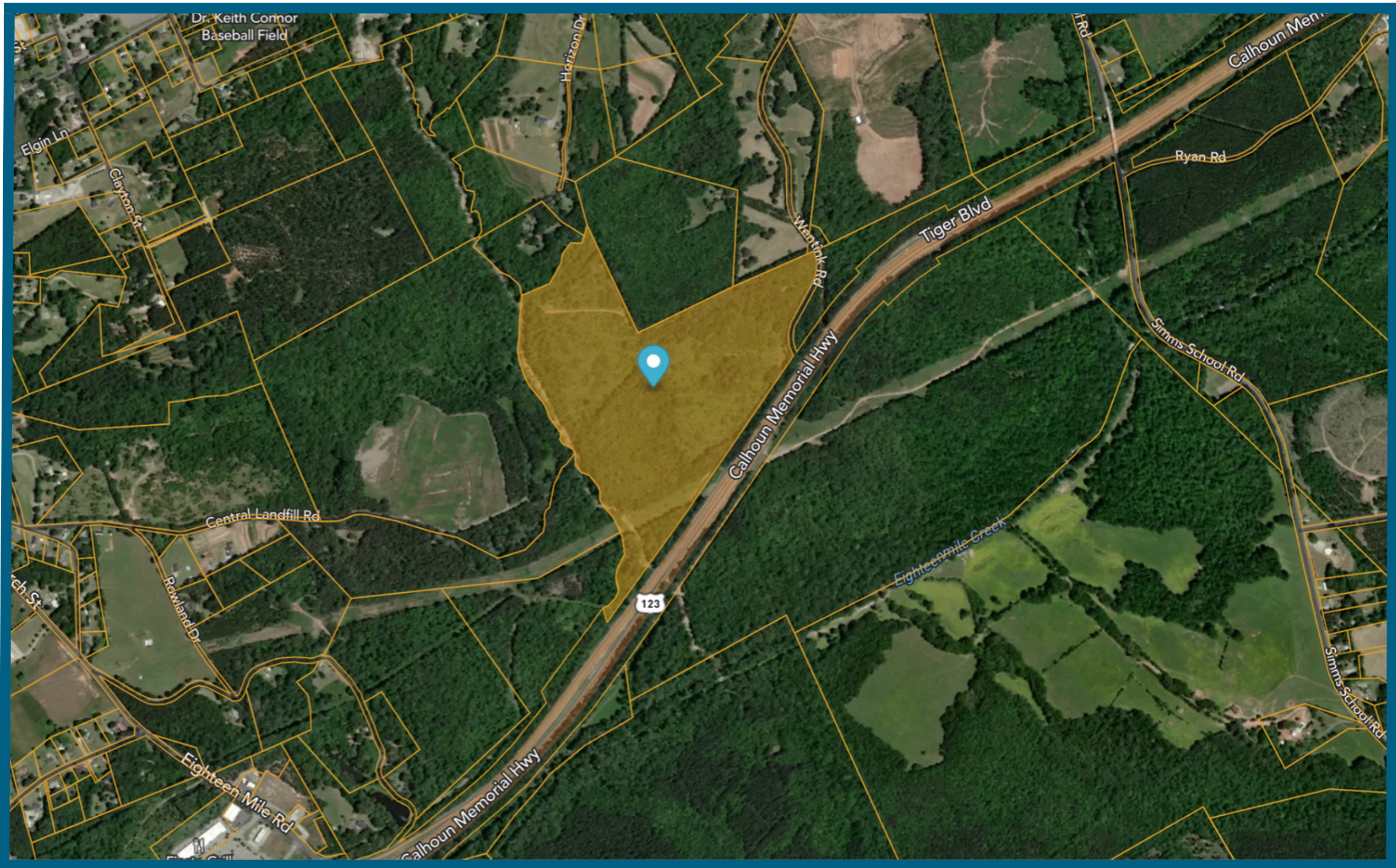
**OFFERING MEMORANDUM**

**87 ACRES FOR SALE**

222 Wentink Road, Central, SC 29630

Drive Times





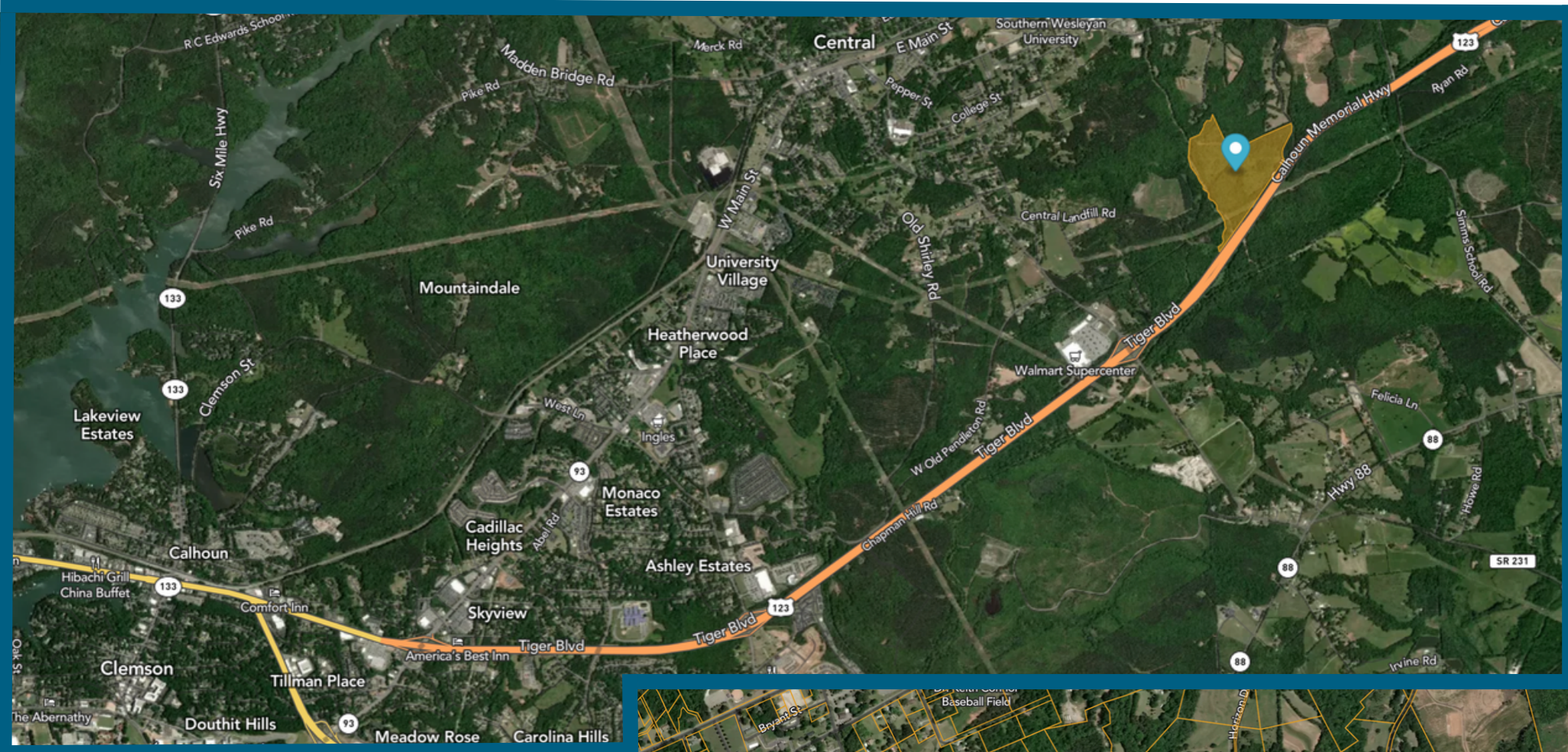
## OFFERING MEMORANDUM

# 87 ACRES FOR SALE

222 Wentink Road, Central, SC 29630

## Aerial Map





**OFFERING MEMORANDUM**

**87 ACRES FOR SALE**

222 Wentink Road, Central, SC 29630

Aerial Map

