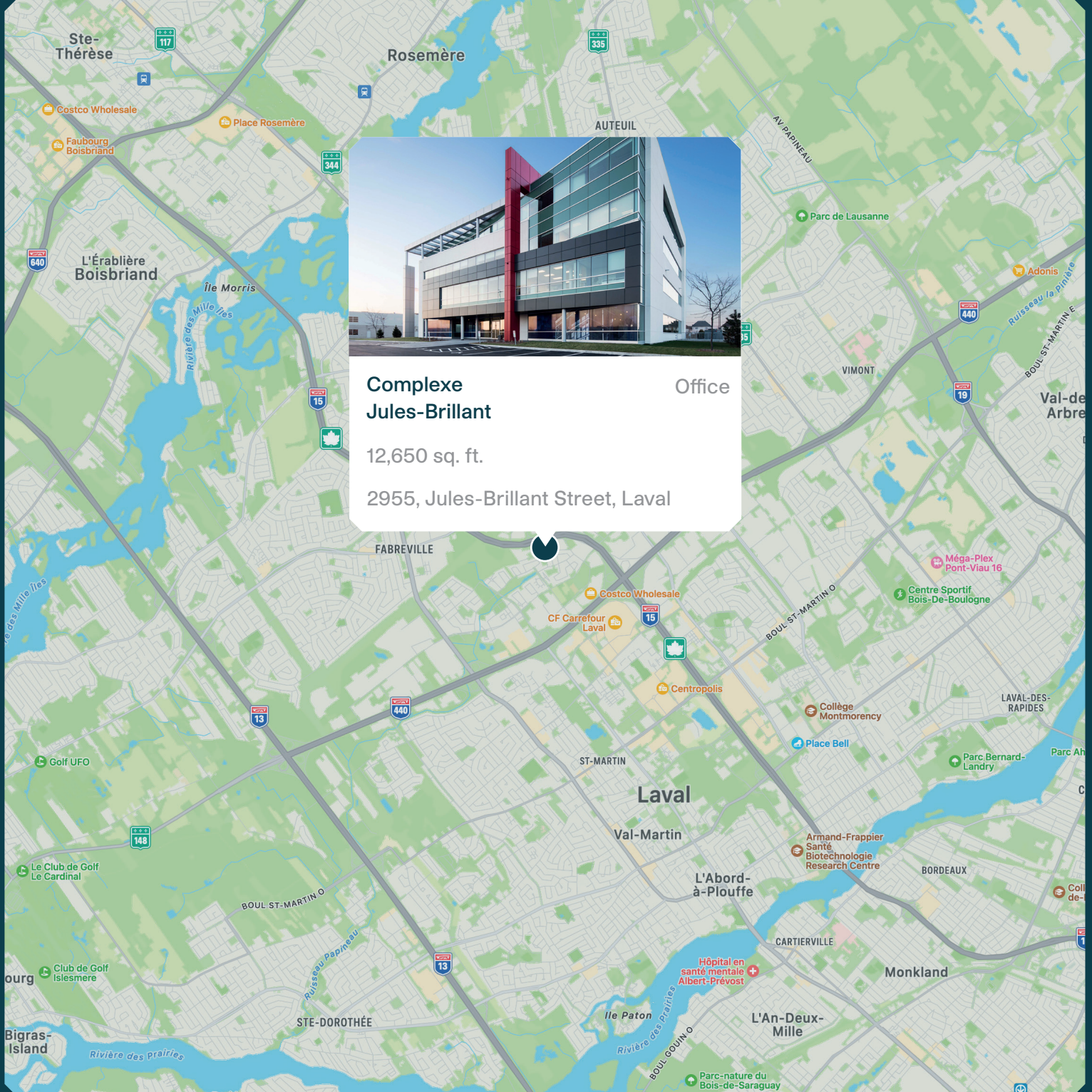


# Complexe Jules-Brillant



**MONTONI**

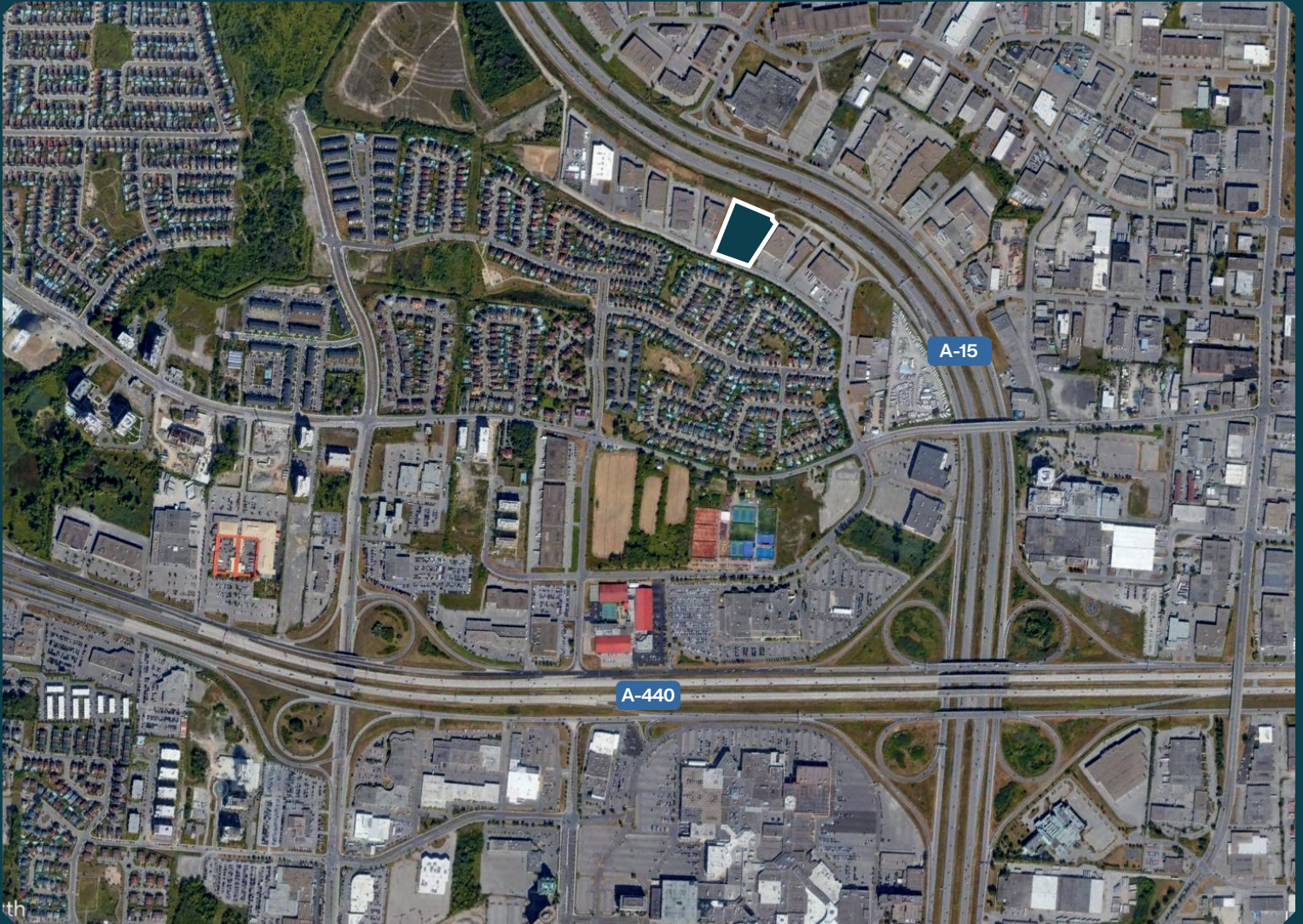
Building on our word  
for tomorrow



**Complexe Jules-Brillant** Office

12,650 sq. ft.

2955, Jules-Brillant Street, Laval



**BUILDING**

---

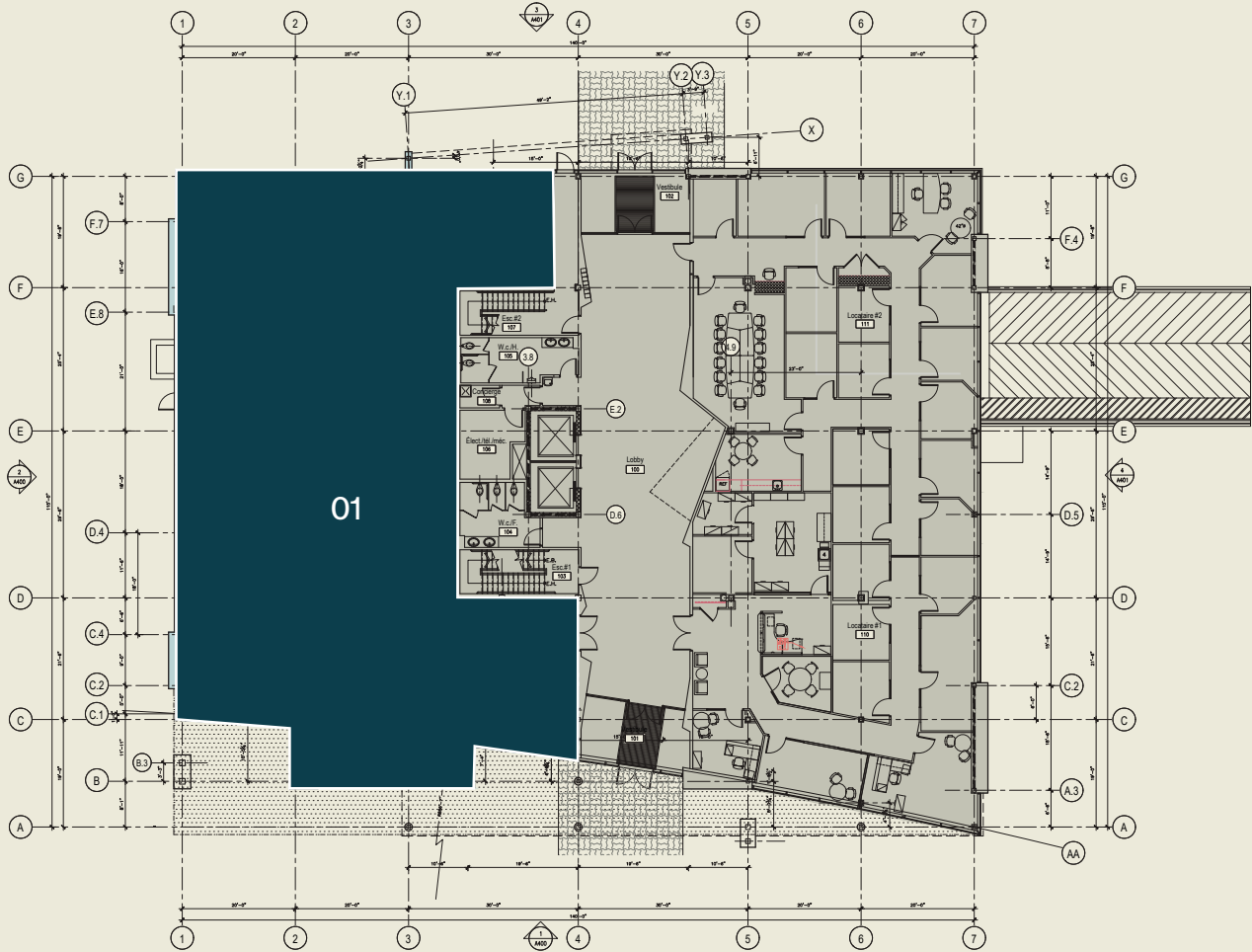
Total area : 60,836 sq. ft.  
Available Space: 12,650 sq. ft.  
Ground floor: 6,868 sq. ft.  
3rd floor: 5,782 sq. ft.

**ACCESS**

---

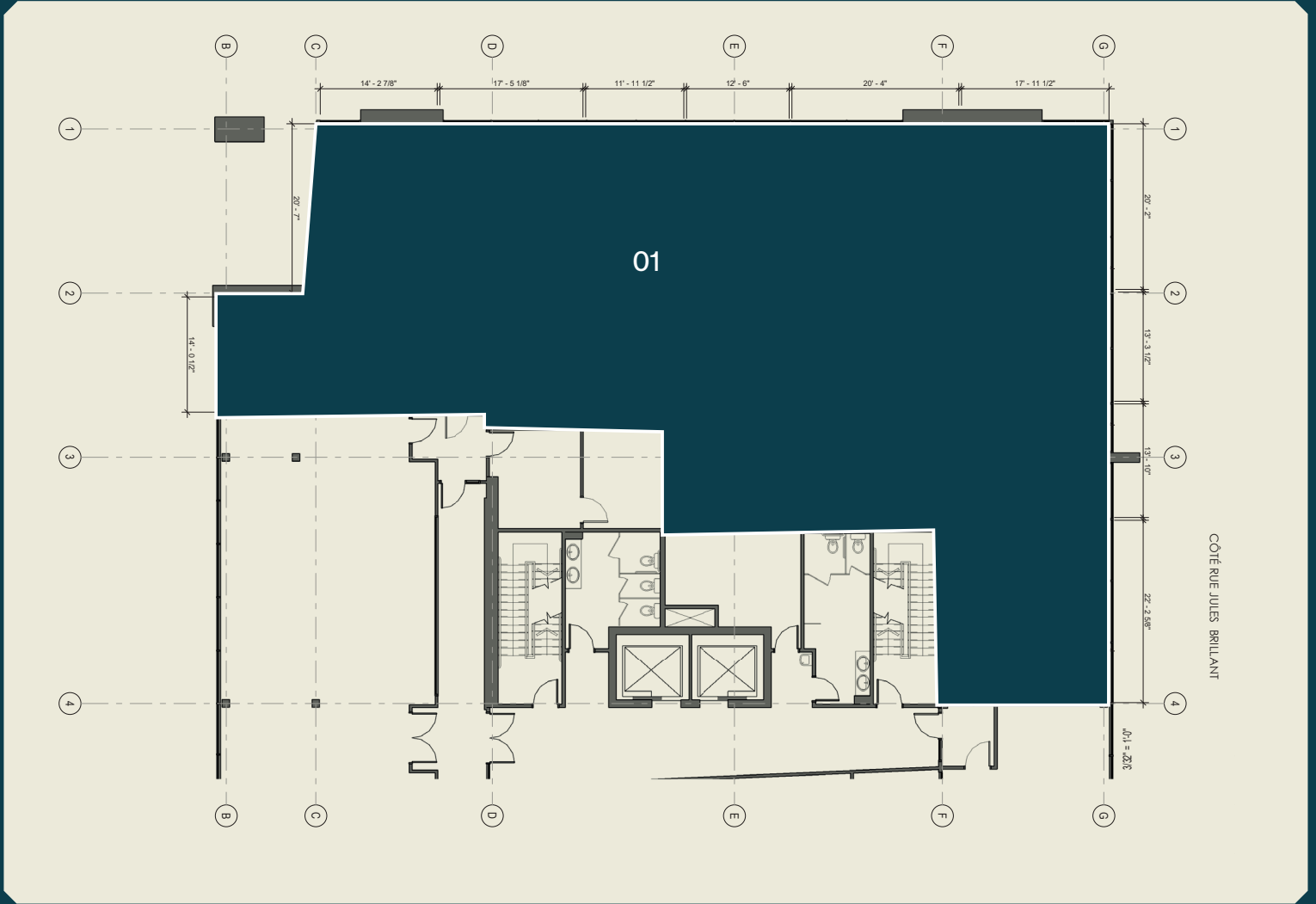
2955 Jules-Brillant street, Laval  
Easy access to highways 15, 440  
Interior & exterior parking

# Ground floor plan



01 - 6,868 sq. ft.

# 3<sup>rd</sup> floor plan



01 - 5,782 sq. ft.

# Summary



## Certifications aimed

## Relevant Information



### LEED

(Leadership in Energy and Environmental Design) is a rating system recognized in 150 countries and is designed to leave a legacy of high-quality, environmentally friendly buildings with a reduced impact on the environment.

- Year of construction : 2016
- Total building space : 60,836 sq. ft.
- Available space :  
GF - 6 868 sq. ft. and  
3rd floor - 5 782 sq. ft.

# MONTONI

For any questions related to this  
presentation, please contact:  
[abouchard@groupemontoni.com](mailto:abouchard@groupemontoni.com)