

FOR LEASE **\$21.00 SF/yr + NNN**

MULTI-TENANT OFFICE IN HIGH TRAFFIC AREA!

Under new ownership, this office property is undergoing a significant transformation, with extensive exterior enhancements, upgraded signage, and interior remodeling. The suite sizes range from 4,000 SF to 14,047 SF. The owner is willing to customize layouts and suite improvements to meet your unique tenant requirements. Positioned as an ideal location for a regional office or corporate headquarters, this property offers great potential. **MLS#265837** **MLS#265831** **MLS #265838**

- Tailorable Space
- 5 year minimum term
- NNN estimated at \$5.50/sf
- 4,000-14,047 sf suite sizes

FOR LEASE \$21.00 SF/yr + NNN

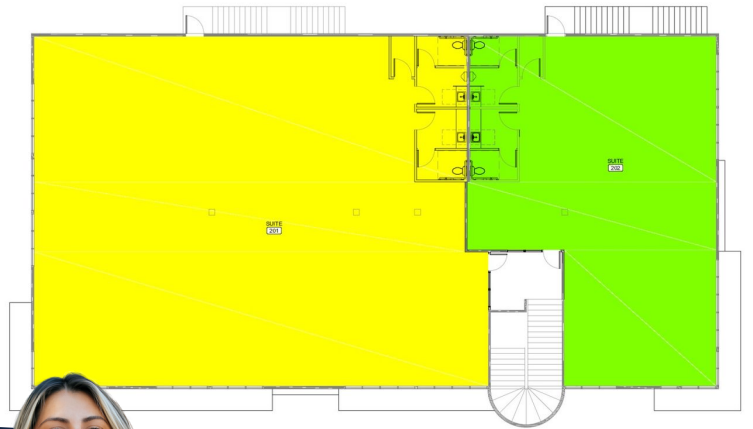
2810 CLEARWATER | Kennewick, WA.



CONCEPTUAL FIRST FLOOR PLAN



CONCEPTUAL SECOND FLOOR PLAN



DERRICK STRICKER
DESIGNATED BROKER



derrick@strickercre.com
509.591.9949



JAZMINE MURILLO
COMMERCIAL BROKER



jazmine@strickercre.com
509.591.9949

