



**5008 169TH ST SE
BOTHELL, WA 98012**

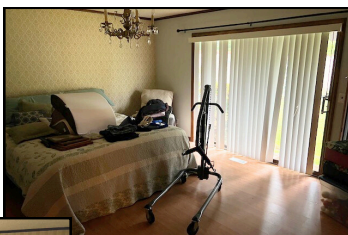
**FURNISHED HOME FOR
LEASE
READY FOR AFH**

MONTHLY RENT \$6,500

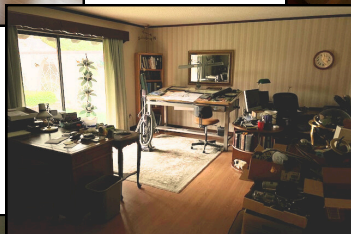
**BEDROOMS 3 BATHROOMS 4.5
SIZE 4,318 SQFT**



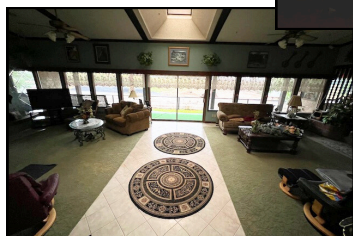
BEDROOM 1



BEDROOM 2



BEDROOM 3



FAMILY ROOM



KITCHEN

OVERVIEW

Located in **Bothell, WA**, this huge, beautiful home on a fenced, 1.5 acre lot is perfect for your AFH. Close enough to Mill Creek to be convenient, but with a private, country feel. 3 large bedrooms, each with a private bathroom, have room for up to 6 clients. One bathroom has a walk-in tub. Lots of grab bars already up. Lots of windows let in natural light while a private courtyard is a great place to soak in the sun. Available furnished. Garage with private bathroom can be converted to caregiver bedroom.

**Annual Gross
Income: \$504,000**

**Net Monthly
Income: \$13,925**