

2460 – 2470 COMMERCIAL DRIVE
AUBURN HILLS, MICHIGAN



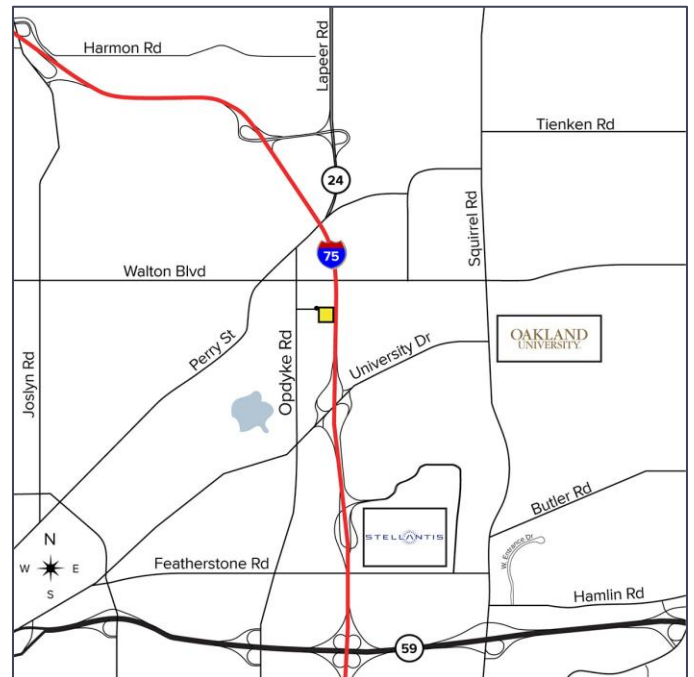
**SIGNATURE
ASSOCIATES**
KNOW SIGNATURE | KNOW RESULTS

INDUSTRIAL FOR LEASE
17,792 Square Feet Available



PROPERTY FEATURES

- 17,792 square feet available
- 5,612 square feet office
- 20' – 23'6" clear height
- (2) 12' x 14' grade level doors
- Contemporary image
- Potentially divisible – 10,299 sq. ft. or 7,493 sq. ft.
- High density fire suppression
- (2) Siemens car chargers
- Signage on I-75 available at extra cost
- Fenced yard potentially available
- Elevator
- High ceilings in office
- Lease Rate: \$9.95/sq. ft. NNN



For more information, please contact:

PAUL HOGE
(248) 948 0103
paulhoge@signatureassociates.com

SIGNATURE ASSOCIATES
One Towne Square, Suite 1200
Southfield, MI 48076
www.signatureassociates.com

Information is subject to verification and no liability for errors or omissions is assumed. Price is subject to change and listing withdrawal.

2460 – 2470 Commercial Street – Auburn Hills, Michigan

Industrial For Lease

17,792
Square Feet
AVAILABLE

Interior Photos



For more information, please contact:

PAUL HOGE
(248) 948 0103
paulhoge@signatureassociates.com

SIGNATURE ASSOCIATES
One Towne Square, Suite 1200
Southfield, MI 48076
www.signatureassociates.com

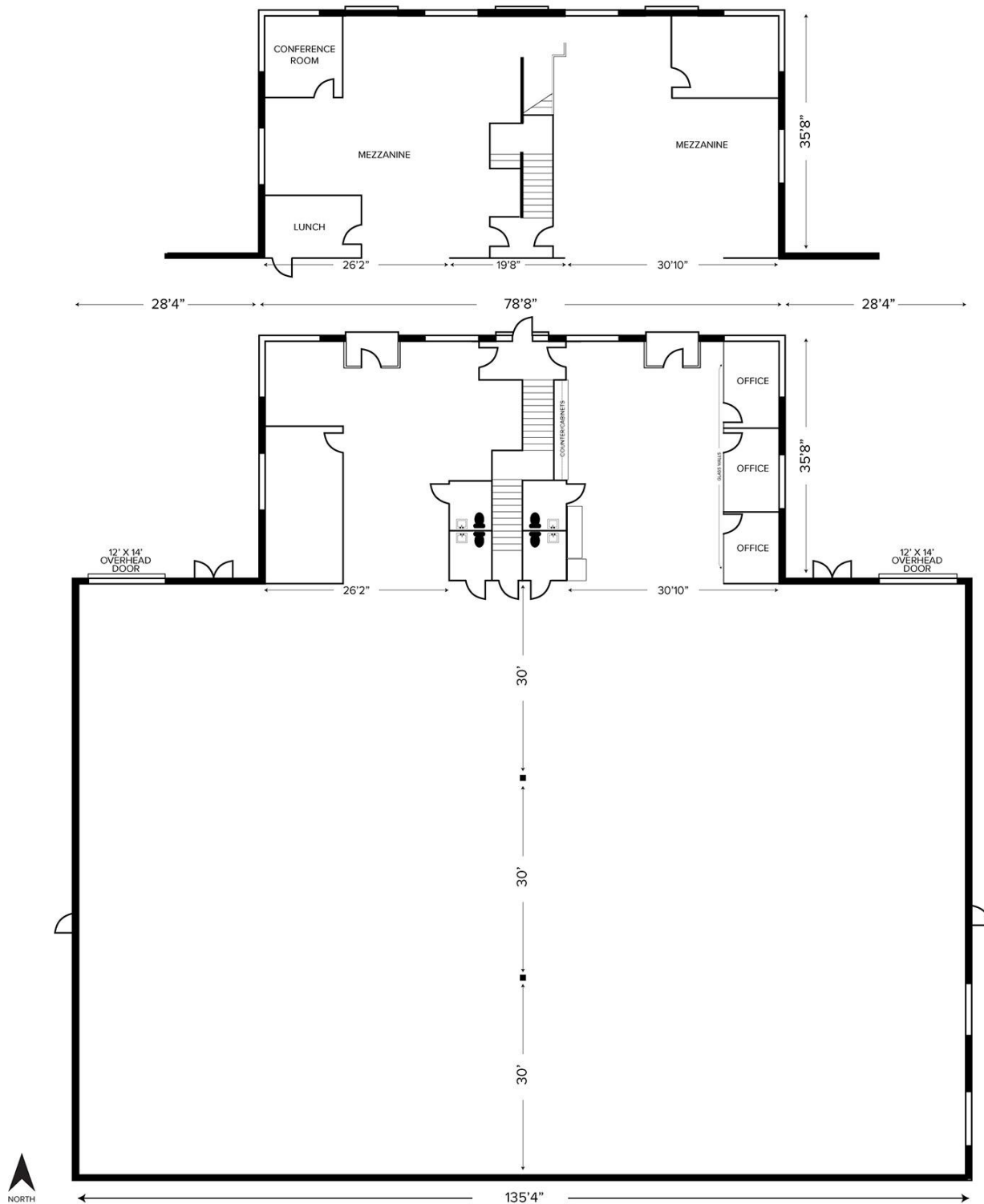
Information is subject to verification and no liability for errors or omissions is assumed. Price is subject to change and listing withdrawal.

2460 – 2470 Commercial Street – Auburn Hills, Michigan

Industrial For Lease

17,792
Square Feet
AVAILABLE

Floor Plan



For more information, please contact:

PAUL HOGE
(248) 948 0103
paulhoge@signatureassociates.com

SIGNATURE ASSOCIATES
One Towne Square, Suite 1200
Southfield, MI 48076
www.signatureassociates.com

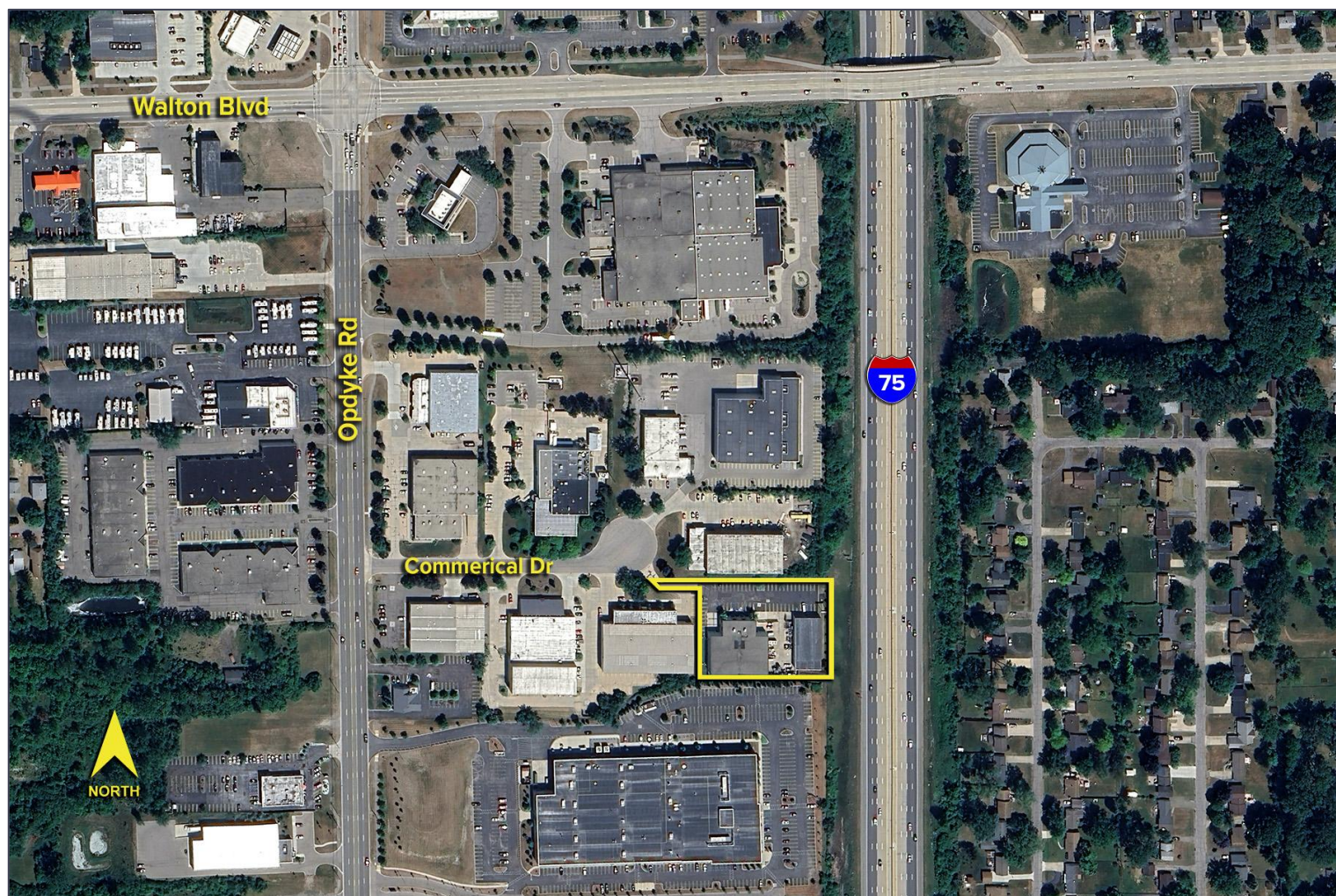
Information is subject to verification and no liability for errors or omissions is assumed. Price is subject to change and listing withdrawal.

2460 – 2470 Commercial Street – Auburn Hills, Michigan

Industrial For Lease

17,792
Square Feet
AVAILABLE

Aerial



For more information, please contact:

PAUL HOGE
(248) 948 0103
paulhoge@signatureassociates.com

SIGNATURE ASSOCIATES
One Towne Square, Suite 1200
Southfield, MI 48076
www.signatureassociates.com

Information is subject to verification and no liability for errors or omissions is assumed. Price is subject to change and listing withdrawal.