

# 7720 FORMULA PLACE

San Diego, CA

**NEW HVAC UNITS**



**NEW EXTERIOR PAINT**



**UPGRADED HARDSCAPE**



**FOR SALE**

**FREESTANDING INDUSTRIAL BUILDING**

**14,200 RSF**



**CUSHMAN &  
WAKEFIELD**

**Colliers**



# PROPERTY HIGHLIGHTS



- **New HVAC Units**
- **New Exterior Paint**
- **Upgraded Hardscape**



±14,200 Square Foot  
Freestanding Industrial Building  
Parcel Size: Approx. 26,136 SF



Clear Height: 14'-16'



4 Dock-High Doors & Grade  
Level Roll-Up Loading Door



Power: 600 Amps,  
120/208v, 3-Phase



Sprinklers



Zoning: IL-3-1



Small Private Yard Space



Capability for demising into  
two separate units



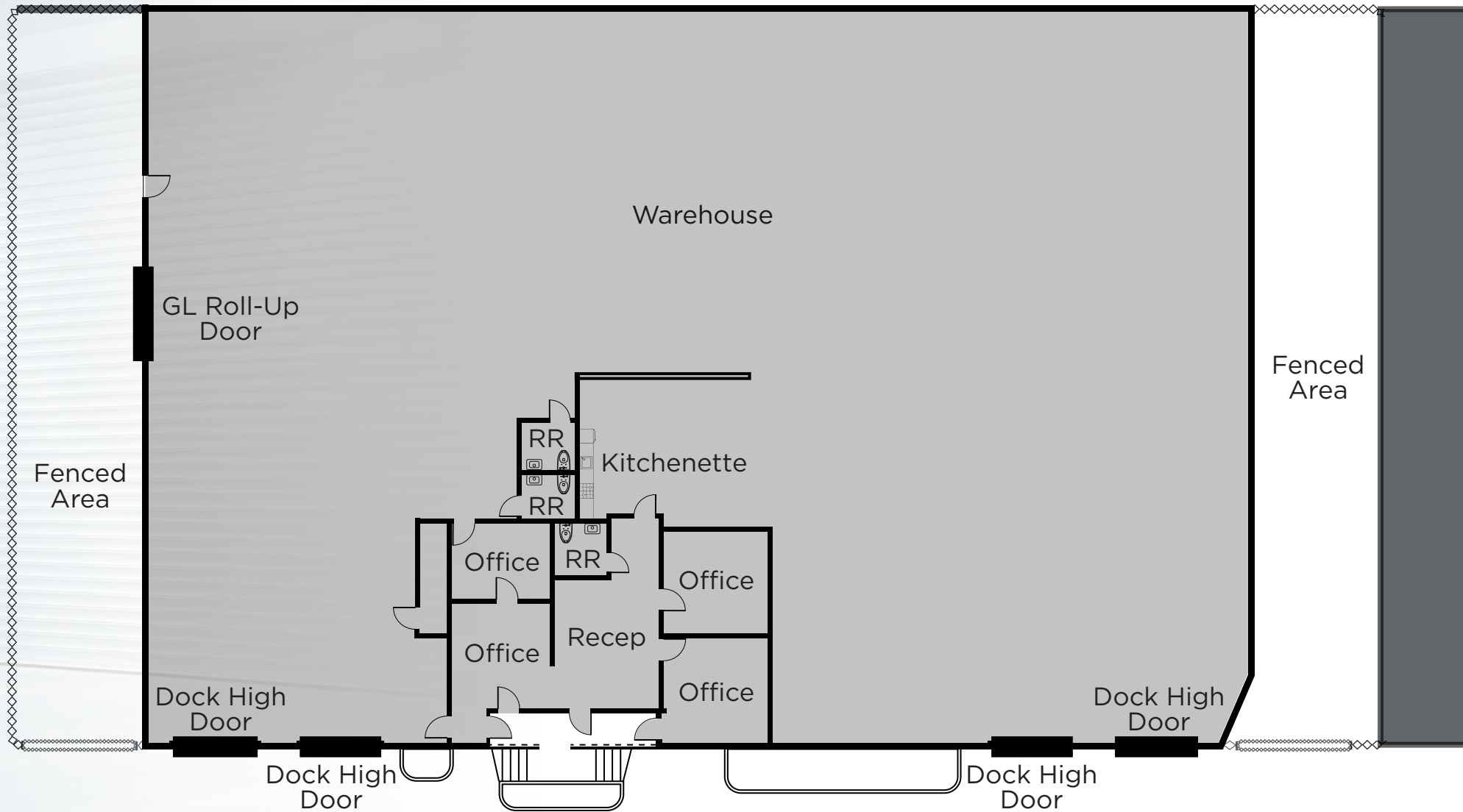
No Association Dues



Sale Price:  
Call Broker For Details

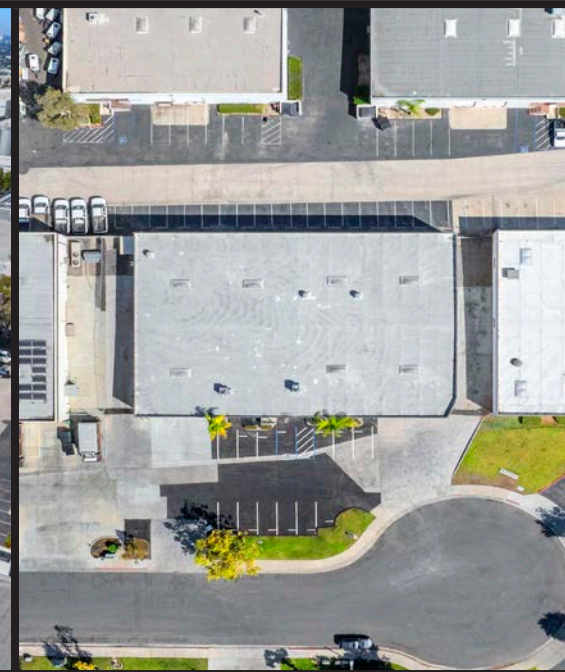
# FLOOR PLAN

14,200 SF



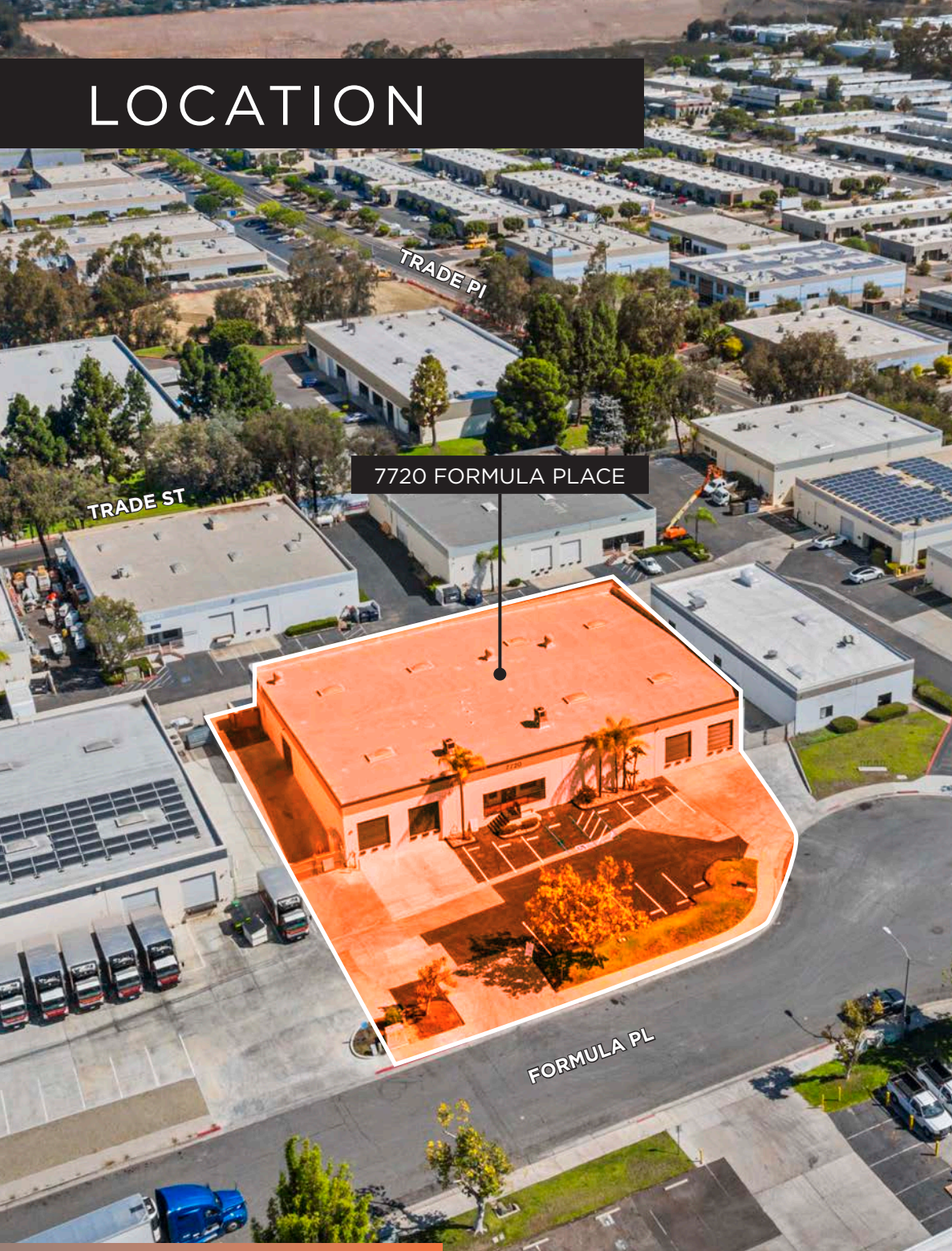


# PHOTOS





# LOCATION



7720 FORMULA PLACE, SAN DIEGO, CA



# DRIVE TIMES & CORPORATE NEIGHBORS



## DRIVE TIMES

**8 Minutes** to I-15

**9 Minutes** to I-805

**12 Minutes** to I-5

**12 Minutes** to CA-52

**25 Minutes** to Downtown San Diego

**28 Minutes** to San Diego International Airport

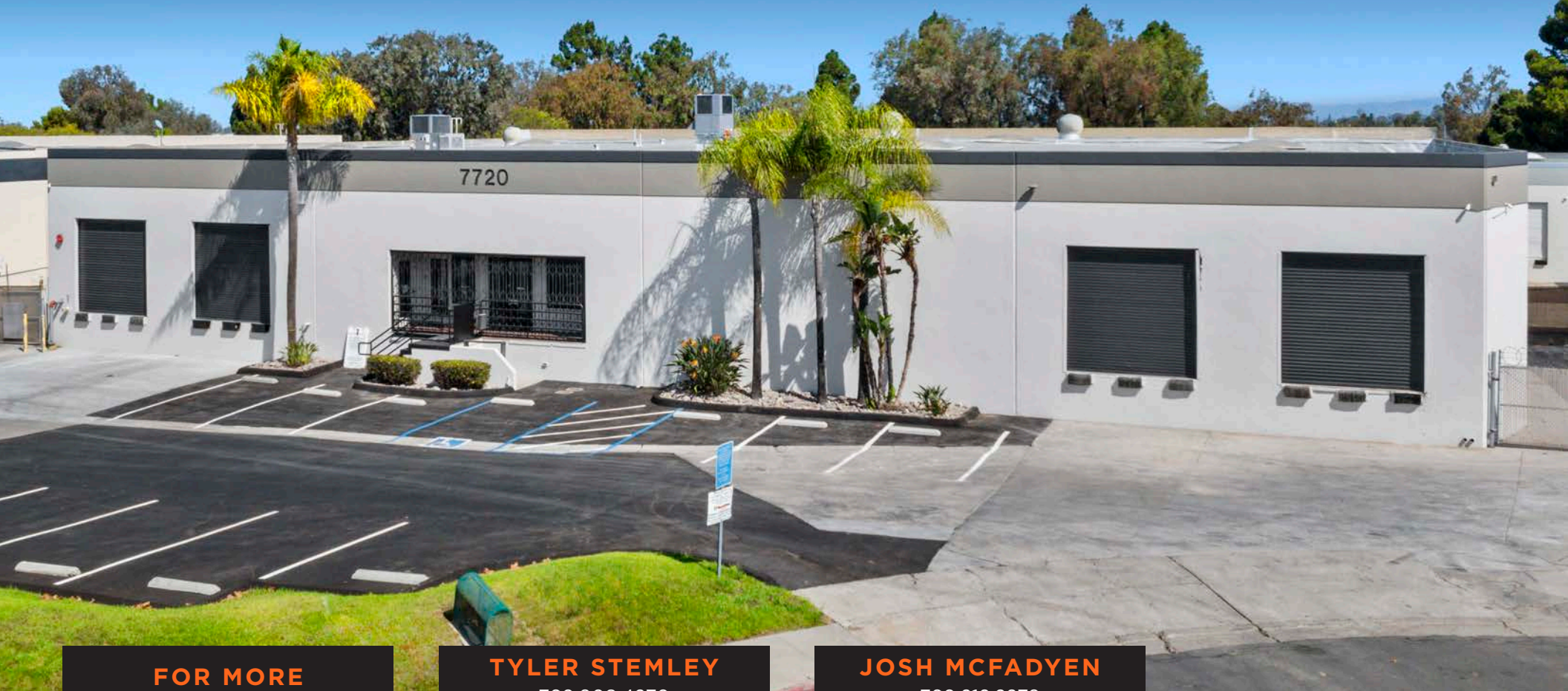
**40 Minutes** to International Border

**1 Hr & 5 Minutes** to Orange County



7720 FORMULA PLACE //// SAN DIEGO

FOR SALE



**FOR MORE  
INFORMATION  
CONTACT BROKER:**

**TYLER STEMLEY**  
760.908.4270  
tyler.stemley@cushwake.com  
Lic. No.02003867

**JOSH MCFADYEN**  
760.212.2279  
josh.mcfadyen@colliers.com  
Lic. No.01255566

 **CUSHMAN &  
WAKEFIELD**



©2025 Cushman & Wakefield. All rights reserved. The information contained in this communication is strictly confidential. This information has been obtained from sources believed to be reliable but has not been verified. NO WARRANTY OR REPRESENTATION, EXPRESS OR IMPLIED, IS MADE AS TO THE CONDITION OF THE PROPERTY (OR PROPERTIES) REFERENCED HEREIN OR AS TO THE ACCURACY OR COMPLETENESS OF THE INFORMATION CONTAINED HEREIN, AND SAME IS SUBMITTED SUBJECT TO ERRORS, OMISSIONS, CHANGE OF PRICE, RENTAL OR OTHER CONDITIONS, WITHDRAWAL WITHOUT NOTICE, AND TO ANY SPECIAL LISTING CONDITIONS IMPOSED BY THE PROPERTY OWNER(S). ANY PROJECTIONS, OPINIONS OR ESTIMATES ARE SUBJECT TO UNCERTAINTY AND DO NOT SIGNIFY CURRENT OR FUTURE PROPERTY PERFORMANCE.