

CONCORD BUSINESS PARK

CONCORD'S PREMIER OFFICE/ WAREHOUSE INDUSTRIAL PROJECT



AVAILABLE SPACE
±3,120 SF & ±4,884 SF

FOR LEASE

5650 IMHOFF DRIVE SUITE H
5700 IMHOFF DRIVE SUITE H

FOR MORE INFORMATION:

TYLER EPTING
925.548.3484
tyler.epting@nrmk.com
CA RE License #01317533

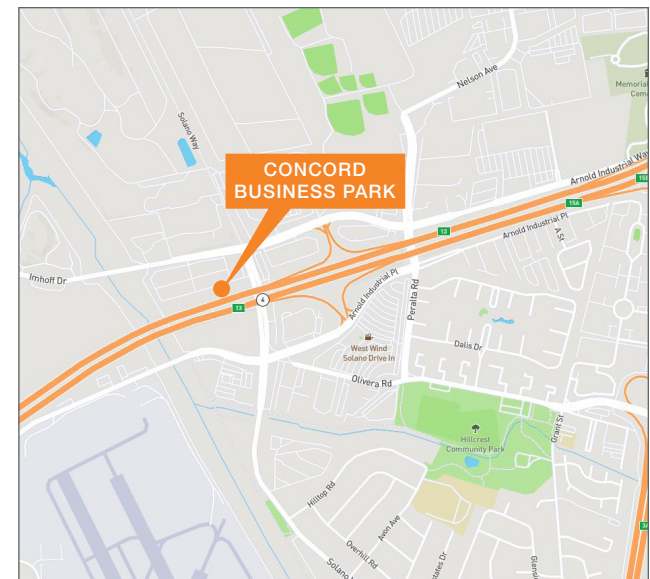
KRIS HAGAR
925.382.8887
kris.hagar@nrmk.com
CA RE License #02009499



1590 SOLANO WAY 5600-5750 IMHOFF DRIVE | CONCORD | CA | 94520

PROJECT HIGHLIGHTS

- Five (5) Concrete Tilt-Up Buildings with Premier North Concord Location Visible from Highway 4
- Excellent Proximity to Hwy 4 & I-680
- Grade-Level Loading Access
- Ample Parking and Drive-Around Truck Access
- Project Offers a Variety of Sizes and Configurations
- Clean, Meticulously Maintained Project with Professional Landscaping and Image
- Fully Sprinklered and Insulated
- Zoning: Light Industrial (Contra Costa County)
- ±2.0/1,000 SF Parking



The information contained herein is believed to be accurate but is not warranted as to its accuracy and may change or be updated without notice. Seller or landlord makes no representation as to the environmental condition of the property and recommends purchaser's or tenant's independent investigation.

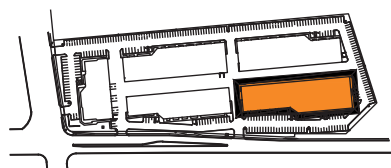
CONCORD BUSINESS PARK

FLOOR PLAN

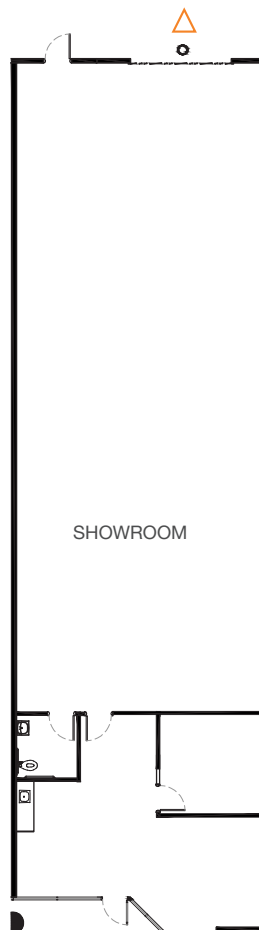
FOR LEASE



SITE KEY PLAN:



BUILDING KEY PLAN:



*Not to scale, all measurements to be verified by tenant

±3,120 SF for Lease

Large Showroom

±229 SF Office

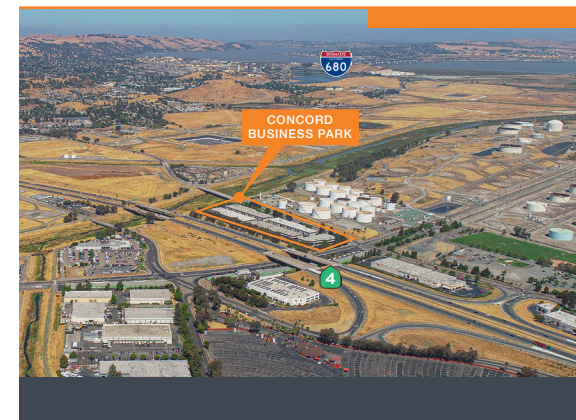
Fully Sprinklered and Insulated

Two (2) Grade Level Doors

Ample Parking and Drive-Around Truck Access

16'-18' Warehouse Clearance

Clear Span, No Columns



FOR MORE INFORMATION

TYLER EPTING

925.548.3484

tyler.epting@nrmk.com

CA RE License #01317533

KRIS HAGAR

925.382.8887

kris.hagar@nrmk.com

CA RE License #02009499

CONCORD BUSINESS PARK
1590 SOLANO WAY 5600-5750
IMHOFF DRIVE | CONCORD |
CA | 94520

NEWMARK

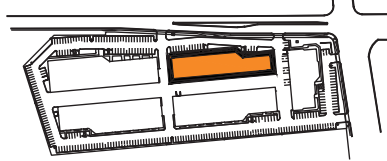
CONCORD BUSINESS PARK

FLOOR PLAN

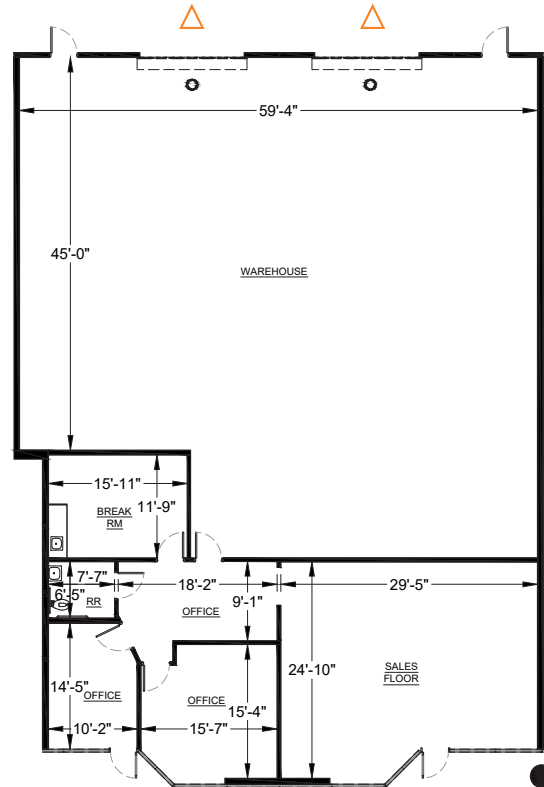
FOR LEASE



SITE KEY PLAN:



BUILDING KEY PLAN:



*Not to scale, all measurements to be verified by tenant



FOR MORE INFORMATION

TYLER EPTING

925.548.3484

tyler.epting@nrmk.com

CA RE License #01317533

KRIS HAGAR

925.382.8887

kris.hagar@nrmk.com

CA RE License #02009499

±4,884 SF for Lease

±3,206 SF Warehouse

±1,658 SF Office

Fully Sprinklered and Insulated

Two (2) Grade Level Doors

Ample Parking and Drive-Around Truck Access

16'-18' Warehouse Clearance

Clear Span, No Columns

CONCORD BUSINESS PARK
1590 SOLANO WAY 5600-5750
IMHOFF DRIVE | CONCORD |
CA | 94520

NEWMARK

CONCORD BUSINESS PARK

FOR LEASE



FOR MORE INFORMATION

TYLER EPTING

925.548.3484

tyler.epting@nmrk.com

CA RE License #01317533

KRIS HAGAR

925.382.8887

kris.hagar@nmrk.com

CA RE License #02009499



CONCORD BUSINESS PARK
1590 SOLANO WAY 5600-5750
IMHOFF DRIVE | CONCORD |
CA | 94520

NEWMARK

CONCORD BUSINESS PARK

AMENITIES & IMPROVEMENTS

FOR LEASE



NEARBY AMENITIES

Kinder Morgan
Kinder's Meats Deli BBQ & Catering
UPS Customer Center
Scandinavian Designs
Lowe's
Restaurant Depot

FOR MORE INFORMATION

TYLER EPTING

925.548.3484

tyler.epting@nmrk.com

CA RE License #01317533

KRIS HAGAR

925.382.8887

kris.hagar@nmrk.com

CA RE License #02009499

CONCORD BUSINESS PARK

1590 SOLANO WAY 5600-5750

IMHOFF DRIVE | CONCORD |

CA | 94520

NEWMARK

The distributor of this communication is performing acts for which a real estate license is required. The information contained herein has been obtained from sources deemed reliable but has not been verified and no guarantee, warranty or representation, either express or implied, is made with respect to such information. Terms of sale or lease and availability are subject to change or withdrawal without notice. MP-039 / 03.24