

8503 LIVERNOIS AVENUE
DETROIT, MICHIGAN



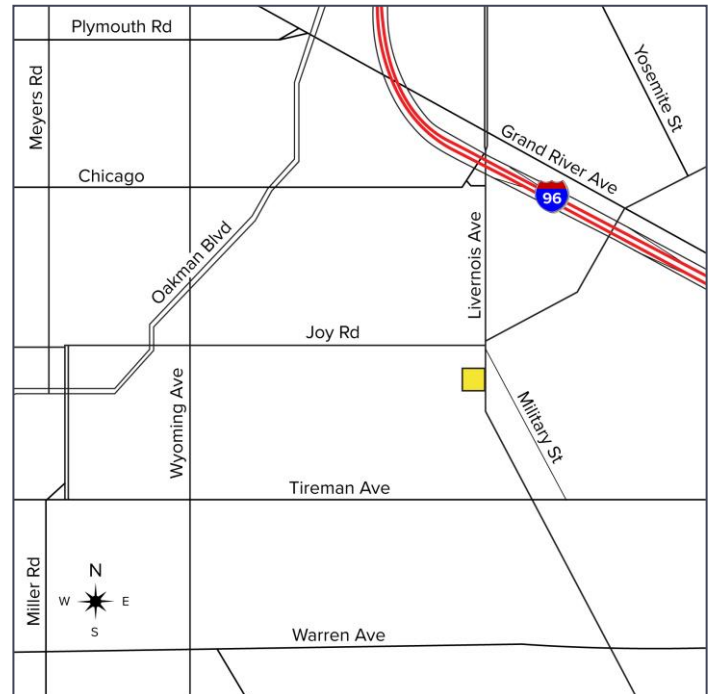
**SIGNATURE
ASSOCIATES**
KNOW SIGNATURE | KNOW RESULTS

INDUSTRIAL/LAND FOR SALE
800 Square Feet / 0.43 Acre



PROPERTY FEATURES

- 800 square feet available
- 0.43 acre lot
- Zoned M2
- Excellent storage yard with 12' block fence, 8" reinforced concrete
- (1) automatic gate
- (3) swing gates
- New pre-fab office
- Sale Price: \$220,000 (\$275.00/sq. ft.)



For more information, please contact:

JOE STACK
(248) 359 0615
jstack@signatureassociates.com

CHRIS MONSOUR
(248) 948 0107
cmonsour@signatureassociates.com

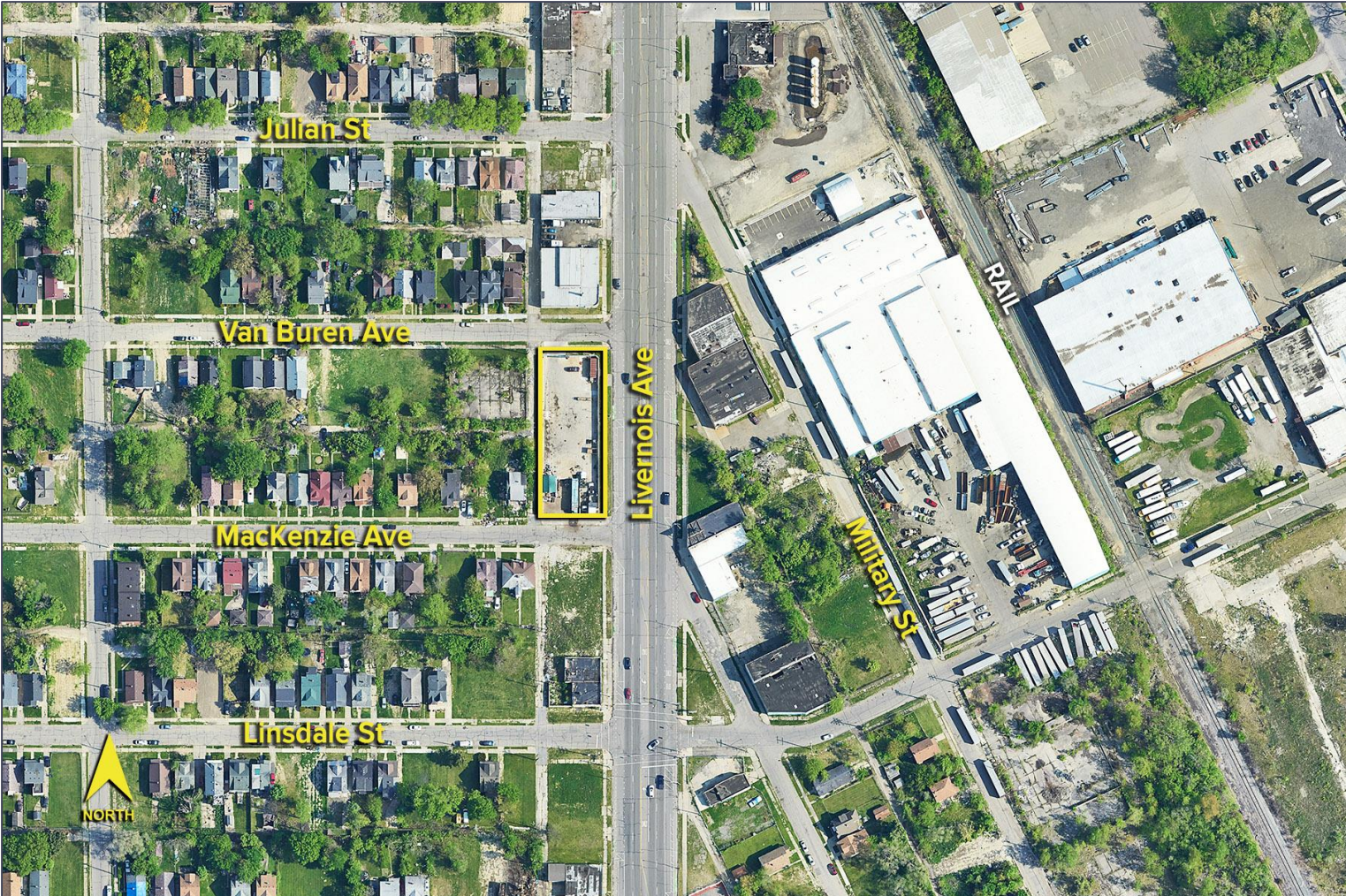
SIGNATURE ASSOCIATES
One Towne Square, Suite 1200
Southfield, MI 48076
www.signatureassociates.com

8503 Livernois Avenue – Detroit, Michigan

Industrial/Land For Sale

800 SF
0.43 Acre
AVAILABLE

Aerial



For more information, please contact:

JOE STACK
(248) 359 0615
jstack@signatureassociates.com

CHRIS MONSOUR
(248) 948 0107
cmonsour@signatureassociates.com

SIGNATURE ASSOCIATES
One Towne Square, Suite 1200
Southfield, MI 48076
www.signatureassociates.com

Information is subject to verification and no liability for errors or omissions is assumed. Price is subject to change and listing withdrawal.