

# Burnsville Bluffs III

11401-11481 Rupp Drive | Burnsville, MN



## Property Overview

- + **Easy access to I-35W, Hwy 13, and Hwy 77**
- + **Total Building:** 78,531 SF
- + **Available Suite 11411**
- + **Total Available:** 15,246 SF
- + **Office:** 5,427 SF (BTS)
- + **Whse:** 9,829 SF
- + **Loading:** 1 Dock, 1 Shared Dock
- + **Clear Height:** 18'
- + **Rental Rates:** \$11.00/\$5.75 PSF
- + **2024 Est Tax/CAM:** \$4.13 PSF

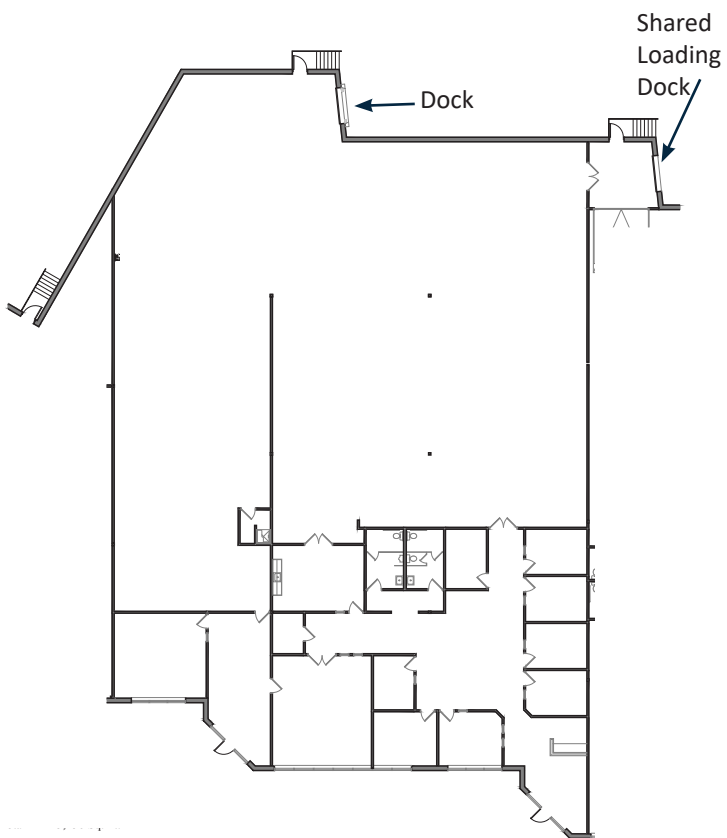
## Contact Us

**Bryan Van Hoof**  
Senior Vice President  
+1 952 924 4624  
bryan.vanhoof@cbre.com

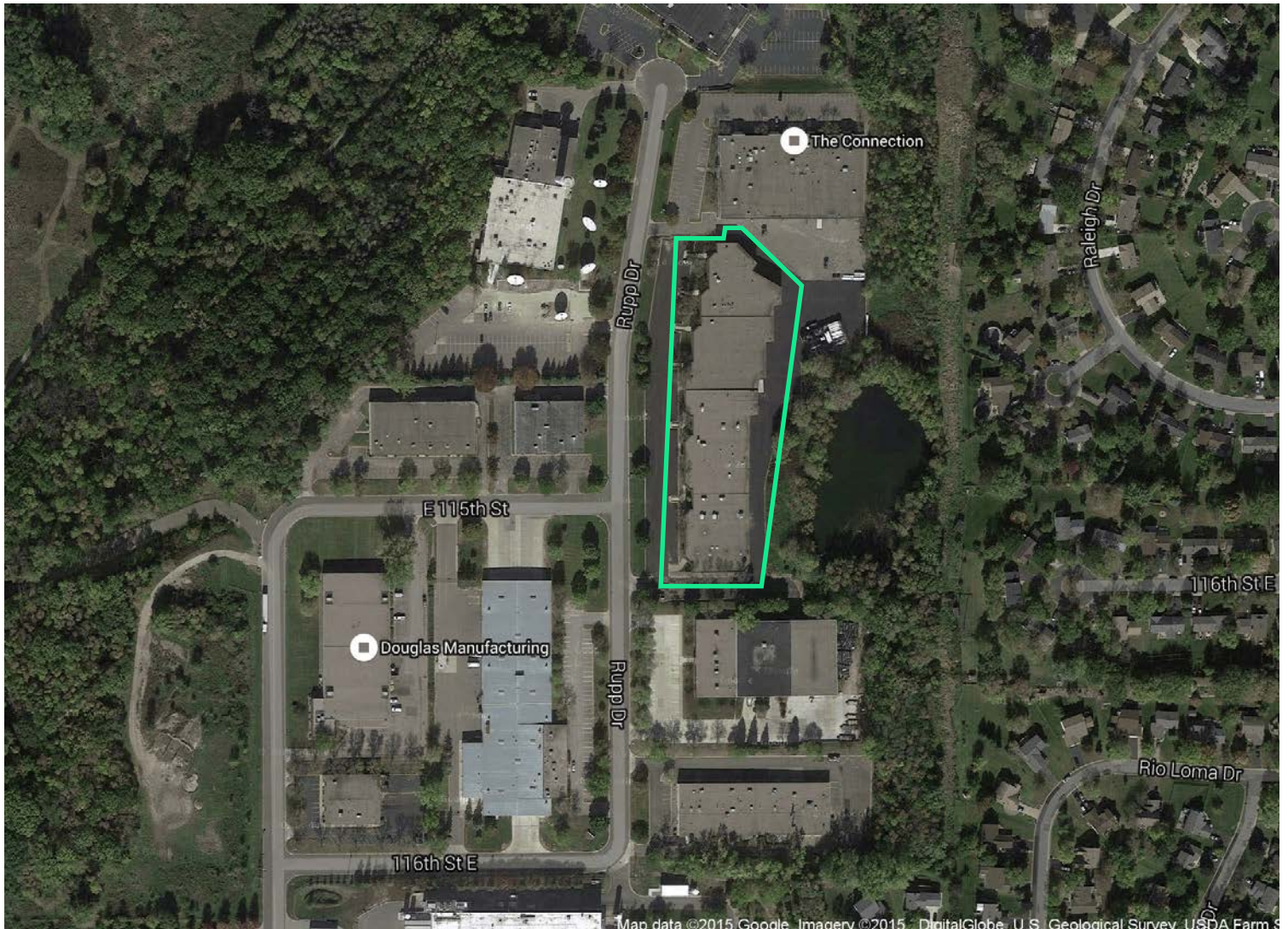
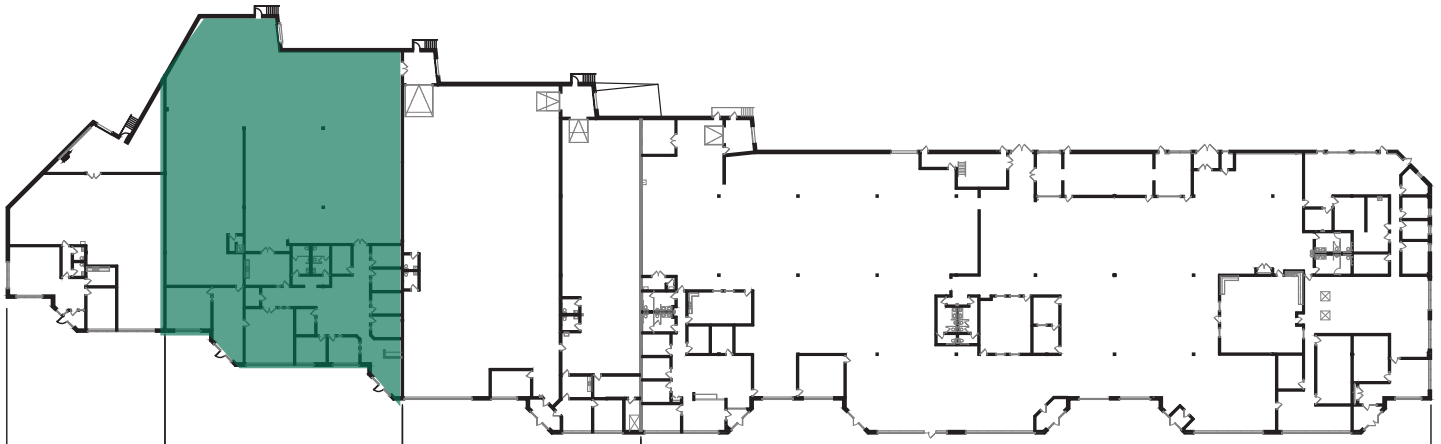
**Jeff Przytarski**  
Senior Vice President  
+1 952 924 4895  
jeff.przytarski@cbre.com

**Sam Manke**  
Senior Associate  
+1 763 398 9047  
sam.manke@cbre.com

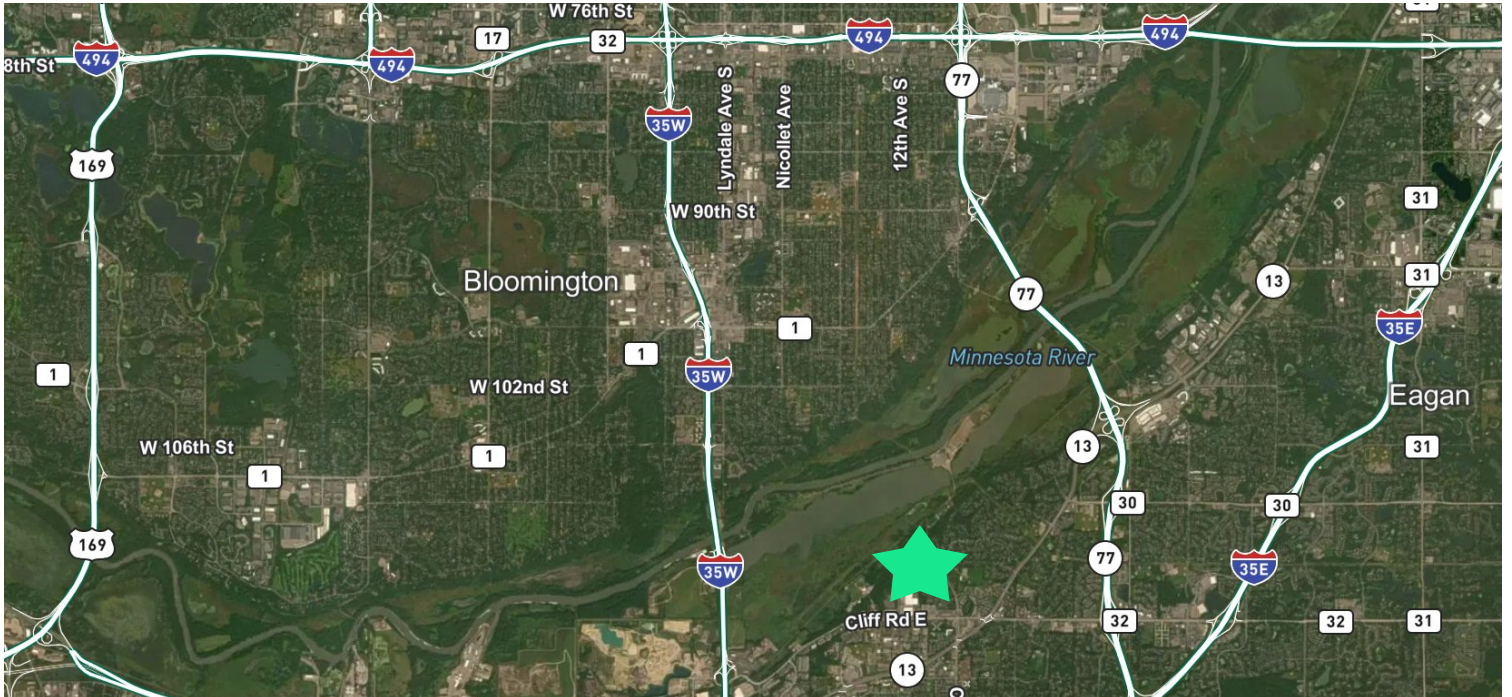












## Contact Us

**Bryan Van Hoof**  
Senior Vice President  
+1 952 924 4624  
bryan.vanhoof@cbre.com

**Jeff Przytarski**  
Senior Vice President  
+1 952 924 4895  
jeff.przytarski@cbre.com

**Sam Manke**  
Senior Associate  
+1 763 398 9047  
sam.manke@cbre.com