

5 Industrial Dr

MATTAPOISETT

MA 02739, USA

FOR LEASE

± 30,000 – 142,000 SF AVAILABLE

OPPORTUNITY TO ADD ± 5 AC
OF OUTDOOR STORAGE

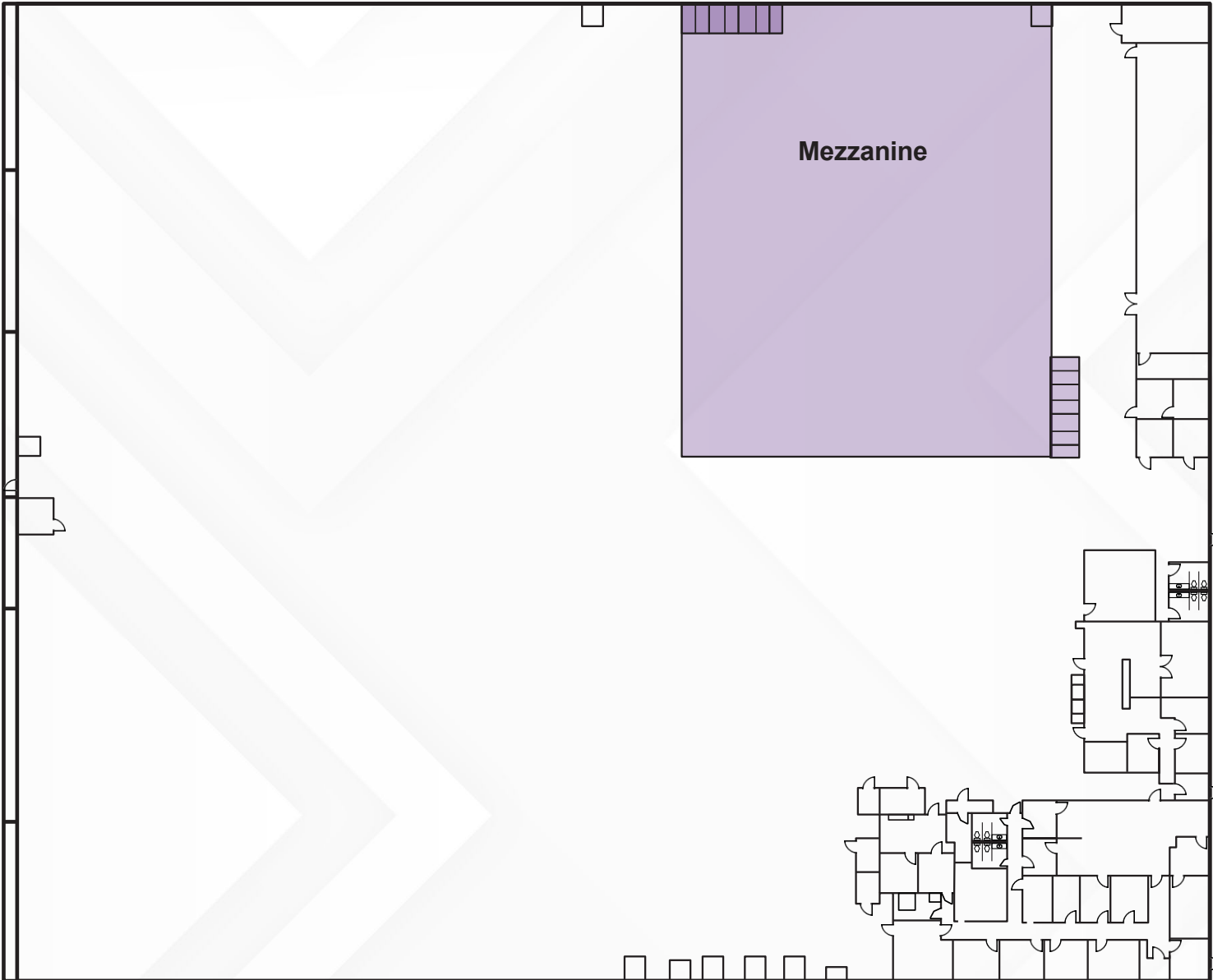
NEWMARK

Building Specifications

Building SF	125,000 SF (Not including the mezzanine)
Available SF	116,250 SF
Office SF	14,798 SF
Dock Doors	8 (with potential to add 7 more)
Drive-in Doors	1
Employee Parking	125
Clear Height	19' at low roof , 28' at center
Lighting	all new LEDs
Sprinklers	ESFR
Column Spacing	52'w x 25'd
Utilities	gas heat in warehouse, forced air AC and heat in office
Power	600a @480v, equivalent to 1380 @208. We have an eversource application submitted to upgrade to 2000amps @480v
Outdoor Storage	Opportunity to add ± 5 AC of outdoor storage in adjacent parcel



Floor Plan



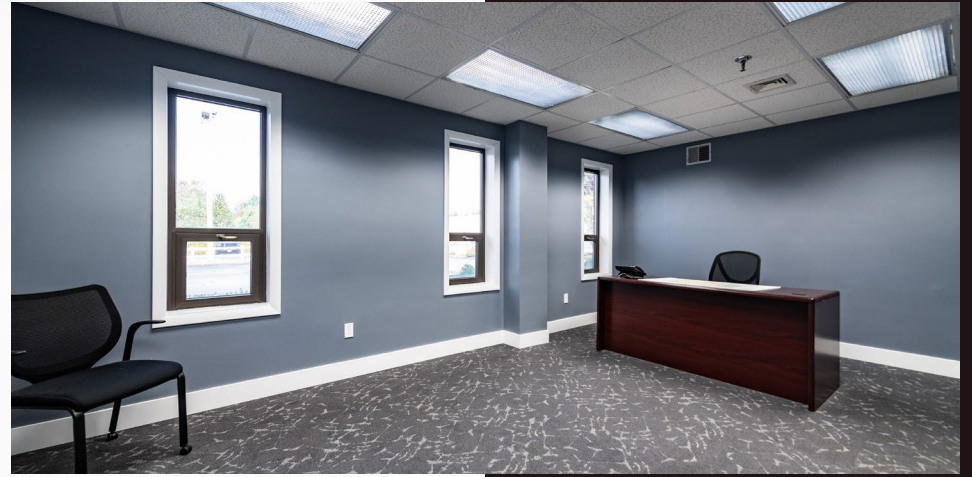
Aerial View

An aerial photograph of an industrial facility. The facility consists of several large, interconnected buildings with grey roofs. A large, rectangular area of land, currently covered in trees and brush, is highlighted with a white border. This area is situated between a road on the left and a parking lot on the right. The surrounding landscape is a mix of industrial structures and natural vegetation.

OPPORTUNITY TO ADD \pm 5 AC
OF OUTDOOR STORAGE

\pm 30,000 – 142,000 SF
AVAILABLE





Superior Access & Location ⁴⁹⁵



5 Industrial Dr, Mattapoissett
MA 02739, USA

I - 495
8 MILES

140
7 MILES

I - 195
0.5 MILES

PROVIDENCE
30 MILES

BOSTON
<1 HR

BOURNE
BRIDGE
20 MILES

NEW BEDFORD
REGIONAL AIRPORT
10 MILES

ED JAROSZ
617-863-8529
ed.jarosz@nmrk.com

TONY COSKREN
617-863-8536
tony.coskren@nmrk.com

RICK SCHUHWERK
617-863-8533
rick.schuhwerk@nmrk.com

BRIAN PINCH
617-863-8538
brian.pinch@nmrk.com

ALLIE PERCOCO
617-755-9563
allie.percoco@nmrk.com

MICHAEL MALINCONICO
617-863-8428
michael.malinconico@nmrk.com

ALISTAIR D. MATULE
617-599-4255
alistair.matule@nmrk.com

NEWMARK