



| NOW LEASING OFFICE SPACE |

Mooreville, NC

BUILDING H 1-5



106 Langtree Village Drive | Mooresville, NC

PROPERTY FACTS

- Waterfront mixed use development with regional draw
- Excellent access and visibility
- Located directly at new I-77 exit 31
- 90,000 vehicles per day on I-77
- Adjacent to multiple shopping and dining options
- Ample parking

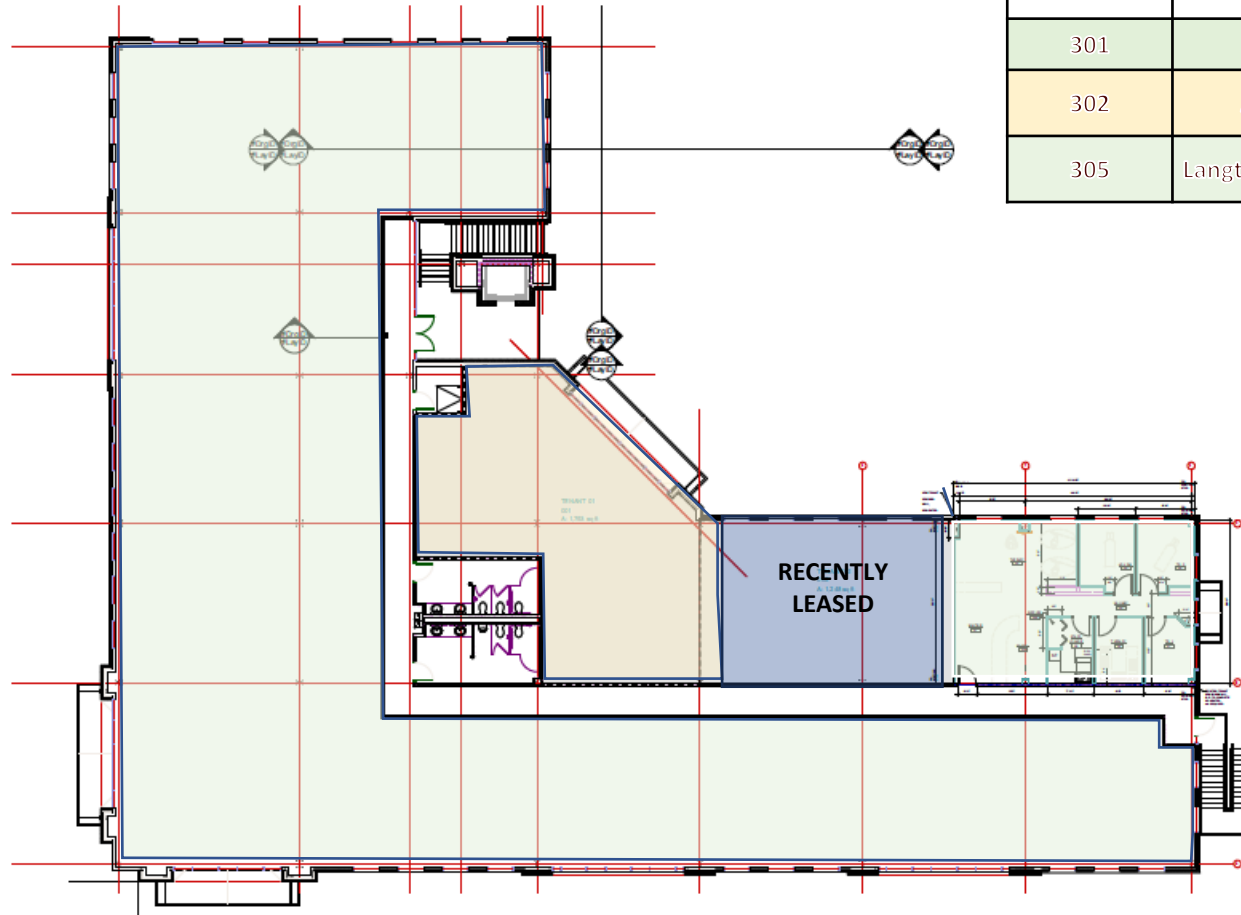


BUILDING FACTS

- 2 stories of office above retail
- Adjacent deck for parking
- Stairs and elevator available to access top floor
- Excellent signage opportunities with frontage on Langtree Rd.
- Significant TIA for credit tenants



BUILDING H FLOORPLAN



SUITE	BUILDING H 1-5	S Q
301	REGUS	12,645 SF
302	AVAILABLE	+/- 2,400 SF
305	Langtree Chiropractic	1,200 SF