

FOR LEASE | ±400,000 SF AVAILABLE

# WEST PATTERSON BUSINESS PARK

400 ROGERS ROAD, PATTERSON, CA 95363

AVAILABLE FOR LEASE



**KEVIN DAL PORTO**  
Executive Managing Director  
+1 209 601 2476  
kevin.dalporto@cushwake.com  
LIC #01212935

**BLAKE RASMUSSEN**  
Executive Managing Director  
+1 209 481 7044  
blake.rasmussen@cushwake.com  
LIC #01010250

**TYSON VALLENARI, SIOR**  
Executive Managing Director  
+1 510 919 2328  
tyson.vallenari@cushwake.com  
LIC #01480887

FOR LEASE | ±400,000 SF AVAILABLE

# WEST PATTERSON BUSINESS PARK

400 ROGERS ROAD, PATTERSON, CA 95363

AVAILABLE FOR LEASE

## PROPERTY FEATURES

- 820,000 Total Square Feet warehouse
- 400,000 SF available for lease
- 44 dock-high doors / 2 grade-level doors
- 109 trailer parking stalls / 114 auto parking stalls
- 1,624' x 500' building dimensions
- 56' x 60' column spacing
- 40' clear height
- ESFR fire suppression system
- 190' truck court
- Fenced and fully secured with gated access
- Existing Pallet Racking





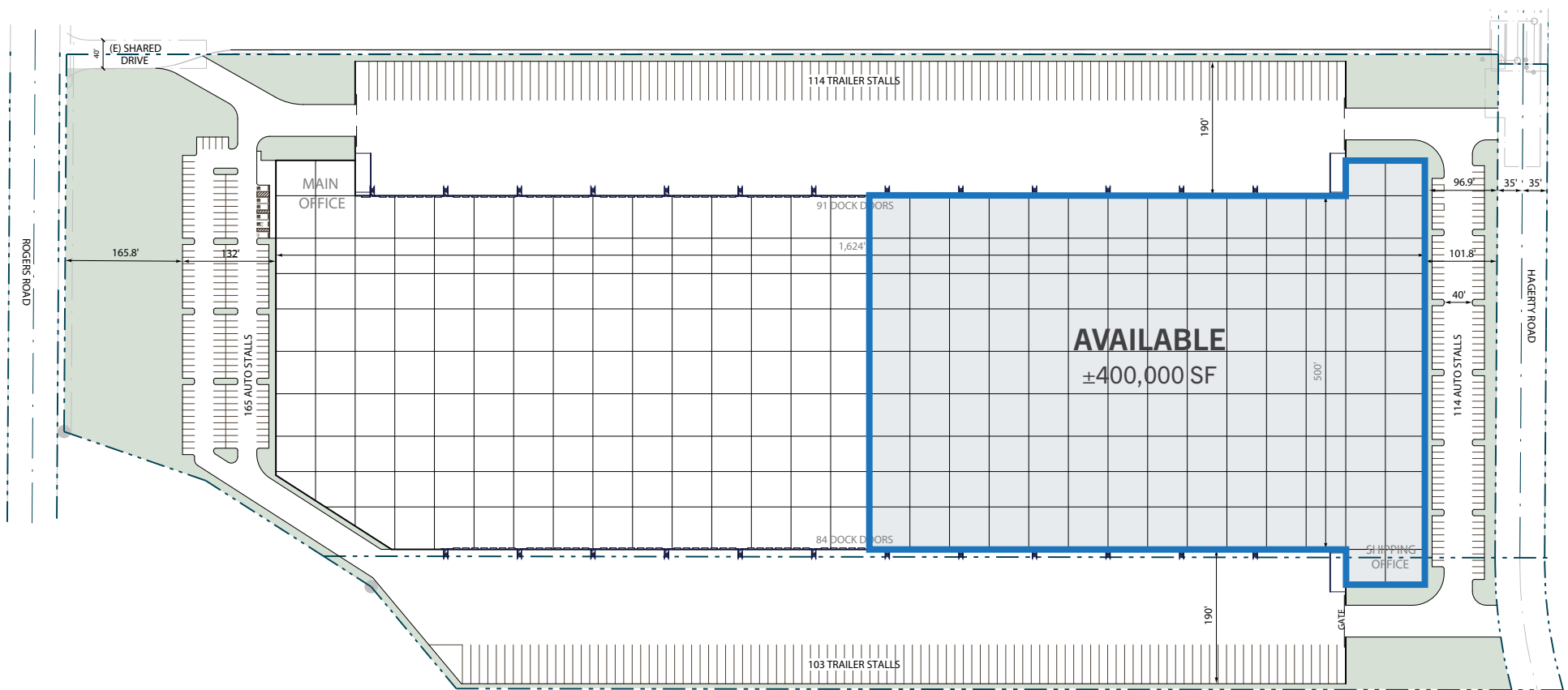
FOR LEASE | ±400,000 SF AVAILABLE

# WEST PATTERSON BUSINESS PARK

400 ROGERS ROAD, PATTERSON, CA 95363

AVAILABLE FOR LEASE

## SITE PLAN



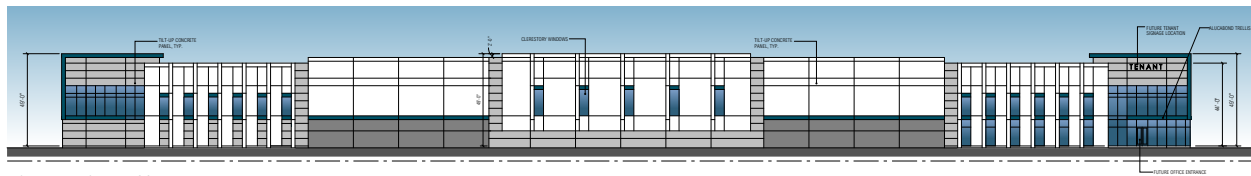
FOR LEASE | ±400,000 SF AVAILABLE

# WEST PATTERSON BUSINESS PARK

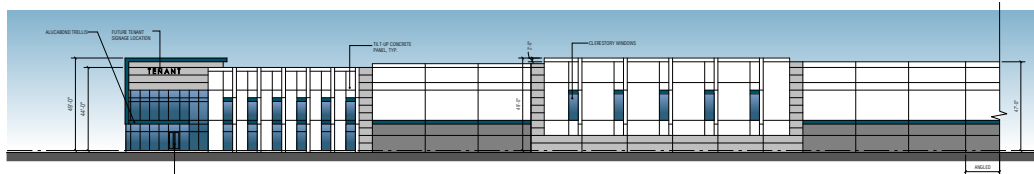
400 ROGERS ROAD, PATTERSON, CA 95363

AVAILABLE FOR LEASE

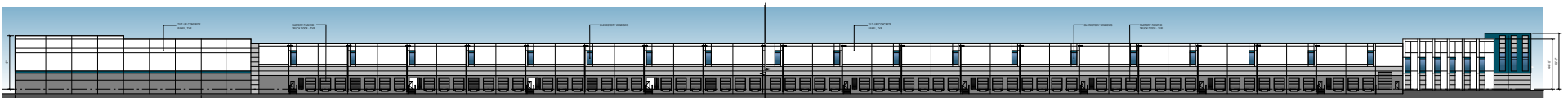
## BUILDING ELEVATIONS



EAST ELEVATION - HAGGERTY DRIVE  
SCALE: 1" = 20'-0"

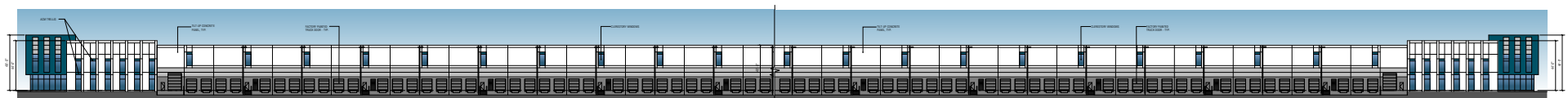


WEST ELEVATION - ROGERS ROAD  
SCALE: 1" = 20'-0"



PARTIAL SOUTH ELEVATION  
SCALE: 1" = 20'-0"

PARTIAL SOUTH ELEVATION  
SCALE: 1" = 20'-0"



PARTIAL NORTH ELEVATION  
SCALE: 1" = 20'-0"

PARTIAL NORTH ELEVATION  
SCALE: 1" = 20'-0"

FOR LEASE | ±400,000 SF AVAILABLE

# WEST PATTERSON BUSINESS PARK

400 ROGERS ROAD, PATTERSON, CA 95363

AVAILABLE FOR LEASE

## PHOTOS





FOR LEASE | ±400,000 SF AVAILABLE

# WEST PATTERSON BUSINESS PARK

400 ROGERS ROAD, PATTERSON, CA 95363

AVAILABLE FOR LEASE





FOR LEASE | ±400,000 SF AVAILABLE

# WEST PATTERSON BUSINESS PARK

400 ROGERS ROAD, PATTERSON, CA 95363

AVAILABLE FOR LEASE



**KEVIN DAL PORTO**  
Executive Managing Director  
+1 209 601 2476  
kevin.dalporto@cushwake.com  
LIC #01212935

**BLAKE RASMUSSEN**  
Executive Managing Director  
+1 209 481 7044  
blake.rasmussen@cushwake.com  
LIC #01010250

**TYSON VALLENARI, SIOR**  
Executive Managing Director  
+1 510 919 2328  
tyson.vallenari@cushwake.com  
LIC #01480887

©2024 Cushman & Wakefield. No warranty or representation, expressed or implied, is made to the accuracy or completeness of the information contained herein, and same is submitted subject to errors, omissions, change of price, rental or other conditions, withdrawal without notice, and to any special listing conditions imposed by the property owner(s). As applicable, we make no representation as to the condition of the property (or properties) in question.