




Investment
Properties
Corporation

OFFICE SPACE
FOR LEASE

BEASLEY BUILDING

 One block west of US41 & just north of Harbour Drive

3033 Riviera Drive | Naples, Florida 34103



Google
Maps

CONTACT (239) 261-3400

John Cheffy, ext. 182, john@ipcnaples.com
Patrick Fraley, ext. 118, patrick@ipcnaples.com

Investment Properties Corporation of Naples
3838 Tamiami Trail North Suite 402
Naples Florida 34103-3586

Tel: 239-261-3400 Fax: 249-261-7579 www.ipcnaples.com

Licensed Real Estate Broker

The statement and figures presented herein, while not guaranteed, are secured from sources we believe authoritative. Subject to prior sale, lease, withdrawal and price change without notice.



**Investment
Properties
Corporation**

BEASLEY BUILDING

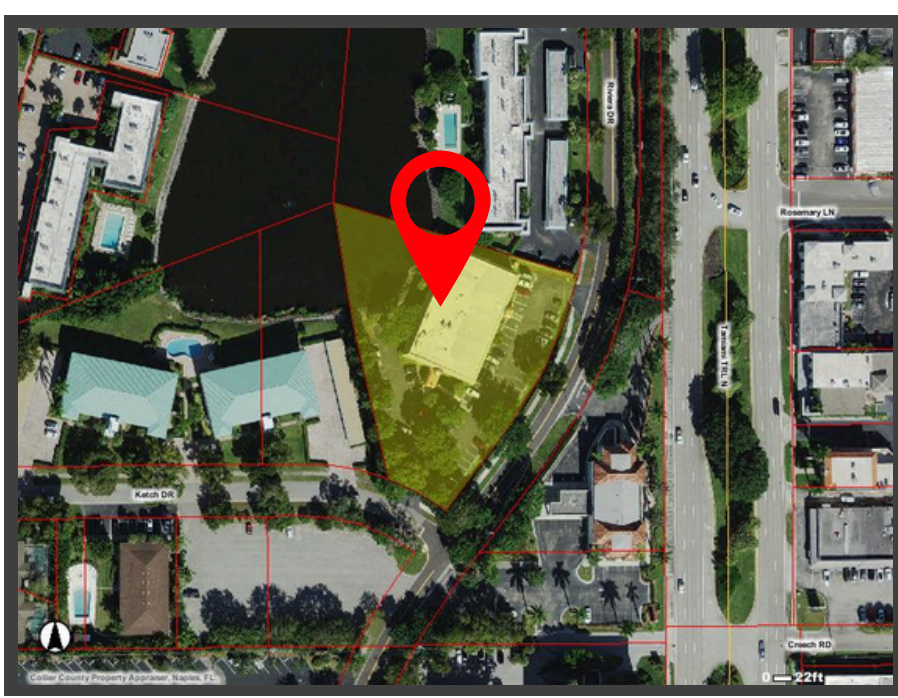
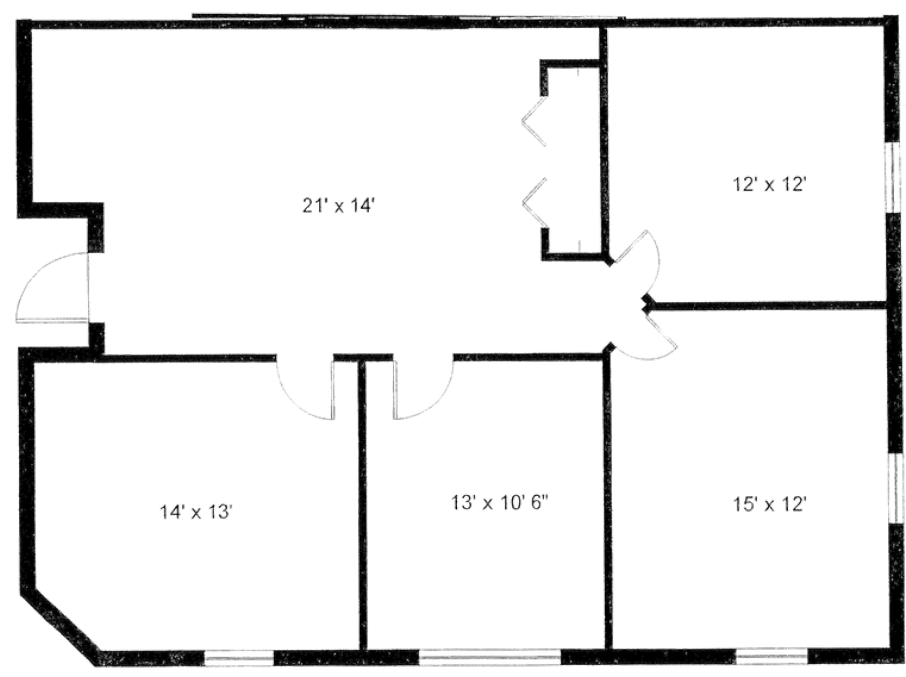
📍 One block west of US41 & just north of Harbour Drive

3033 Riviera Drive | Naples, Florida 34103

LEASING INFORMATION

<u>SUITE:</u>	102	<u>BASE RENT:</u>	\$22.00 PSF
<u>SF:</u>	950 SF	<u>EST. 2024 CAM:</u>	\$5.93 PSF
		<u>AVAILABILITY:</u>	9/01/2024

Floor Plan Suite 102



Aerial

The statement and figures presented herein, while not guaranteed, are secured from sources we believe authoritative. Subject to prior sale, lease, withdrawal and price change without notice.



**Investment
Properties
Corporation**

BEASLEY BUILDING

📍 One block west of US41 & just north of Harbour Drive

3033 Riviera Drive | Naples, Florida 34103

WATERSIDESHOPS



AMENITY RICH LOCATION FOR EMPLOYEES



SUBJECT PROPERTY

DEMOGRAPHICS (2024)	1 MILE	3 MILES	5 MILES
Est. Population	7,118	33,603	91,630
Est. Avg. Household Income	\$184,946	\$181,752	\$157,021



The statement and figures presented herein, while not guaranteed, are secured from sources we believe authoritative. Subject to prior sale, lease, withdrawal and price change without notice.