



PARK RENAISSANCE

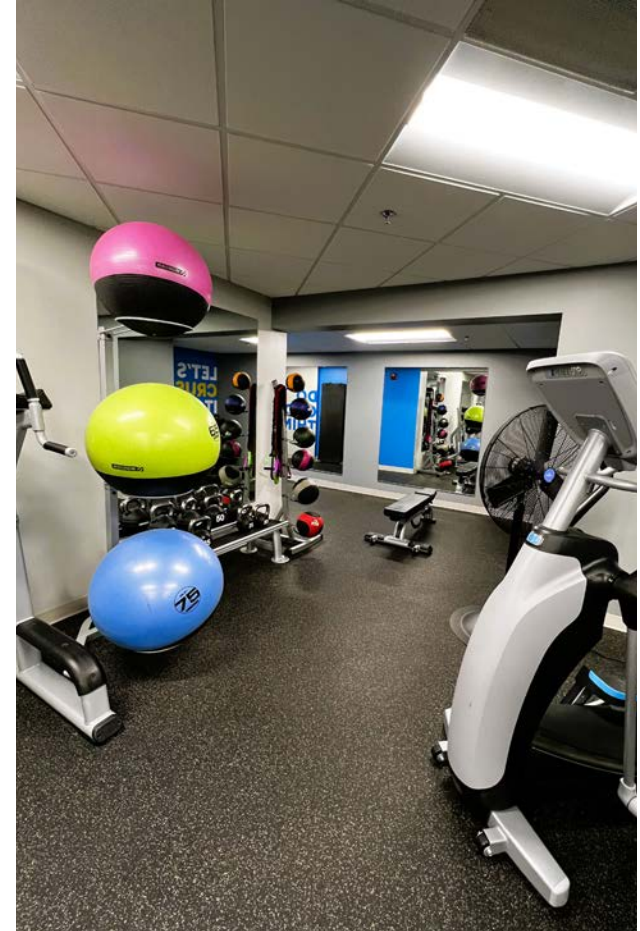
7007 & 7015 COLLEGE BLVD
OVERLAND PARK, KS



Price Brothers



SHARED BUILDING AMENITIES



- ON-SITE DELI
- NEW FITNESS CENTER WITH SHOWERS
- OUTDOOR PATIOS, PERFECT FOR MEETINGS OR RELAXATION
- 2023 "AWARD FOR LANDSCAPE EXCELLENCE"

- REFRESHED COMMON SPACES
- ON-SITE PROPERTY MANAGEMENT
- CLOSE PROXIMITY TO OP CONVENTION CENTER, EQUITY BANK, AND NUMEROUS HOTELS AND RESTAURANTS

7007 COLLEGE



SUITES RANGING FROM 1,080 - 7,526 SF

PARKING RATIO: 3.8 / 1,000

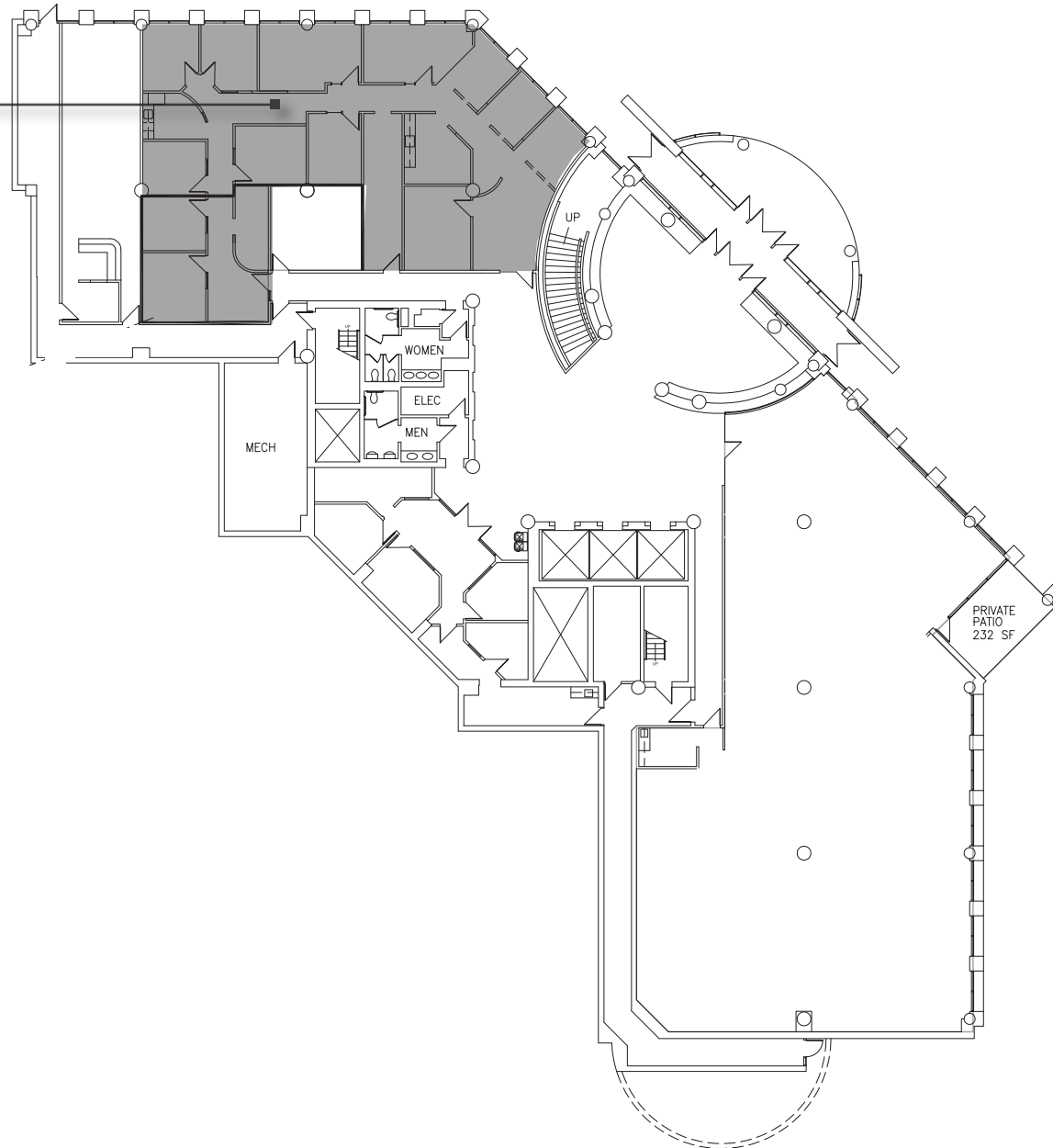
FITNESS CENTER LOCATED WITHIN
THE BUILDING

NEW CONCRETE WORK, LANDSCAPING,
AND PATIOS

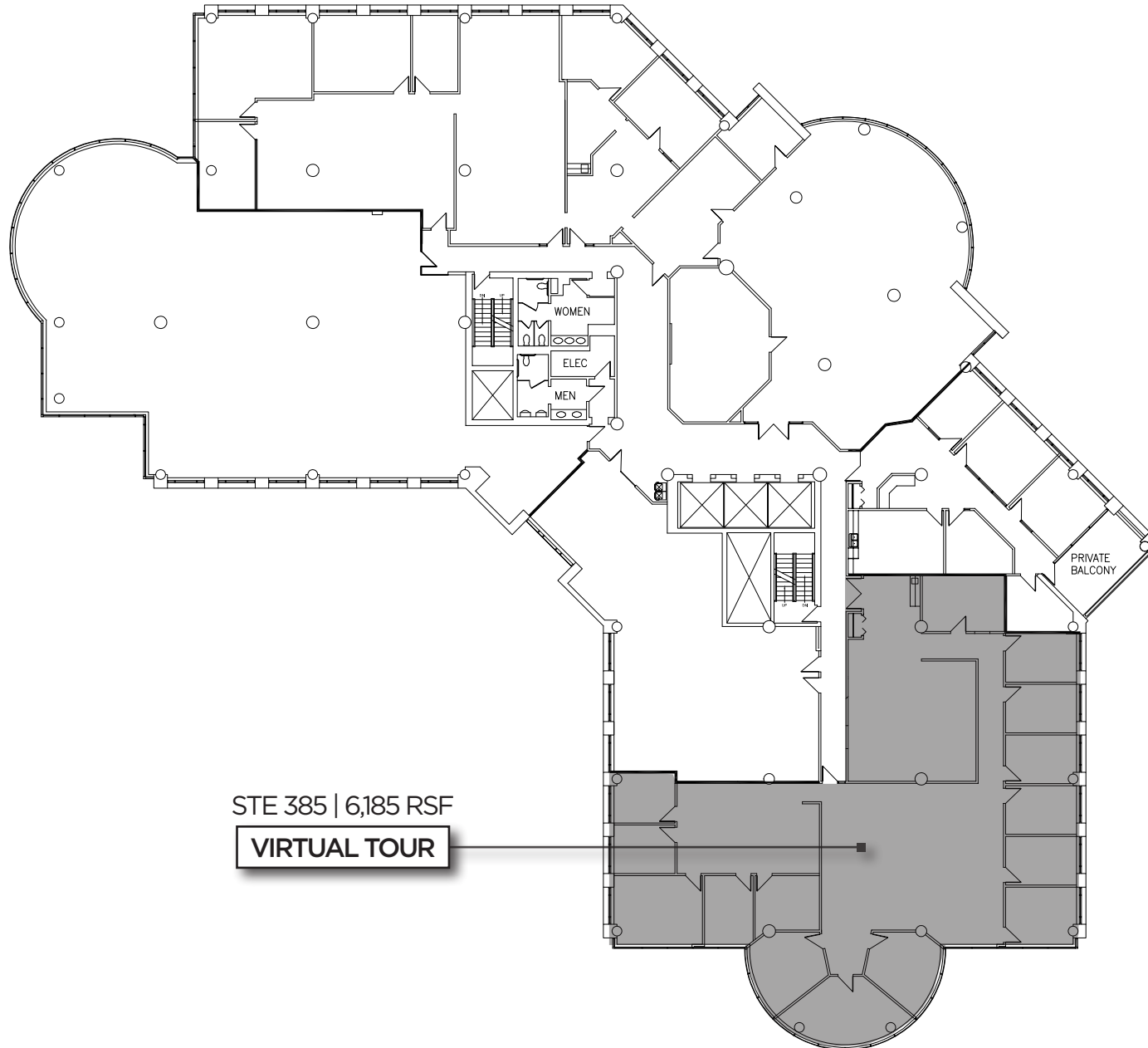


1ST FLOOR - 7007 COLLEGE

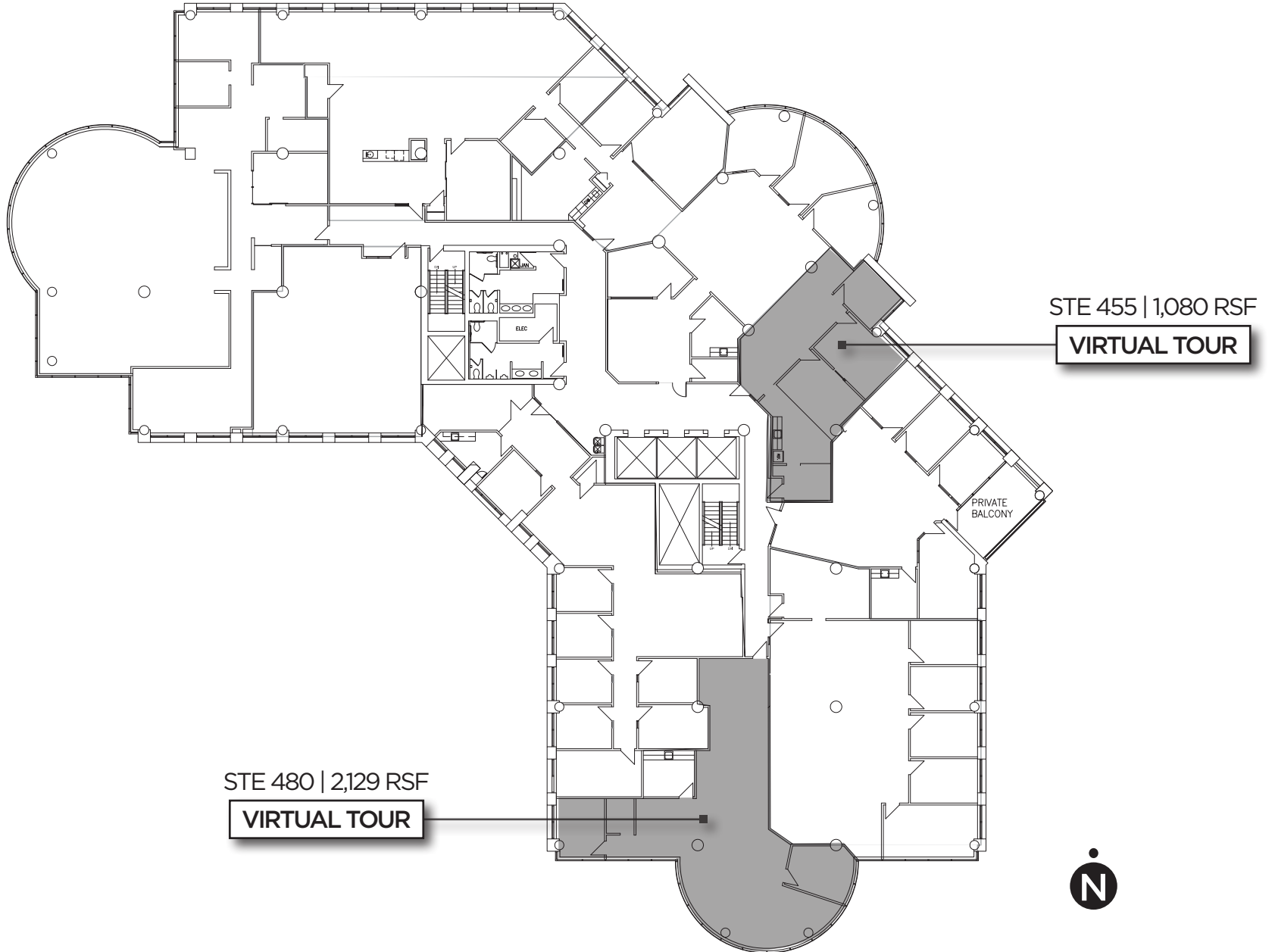
STE 100 | 3,682 RSF



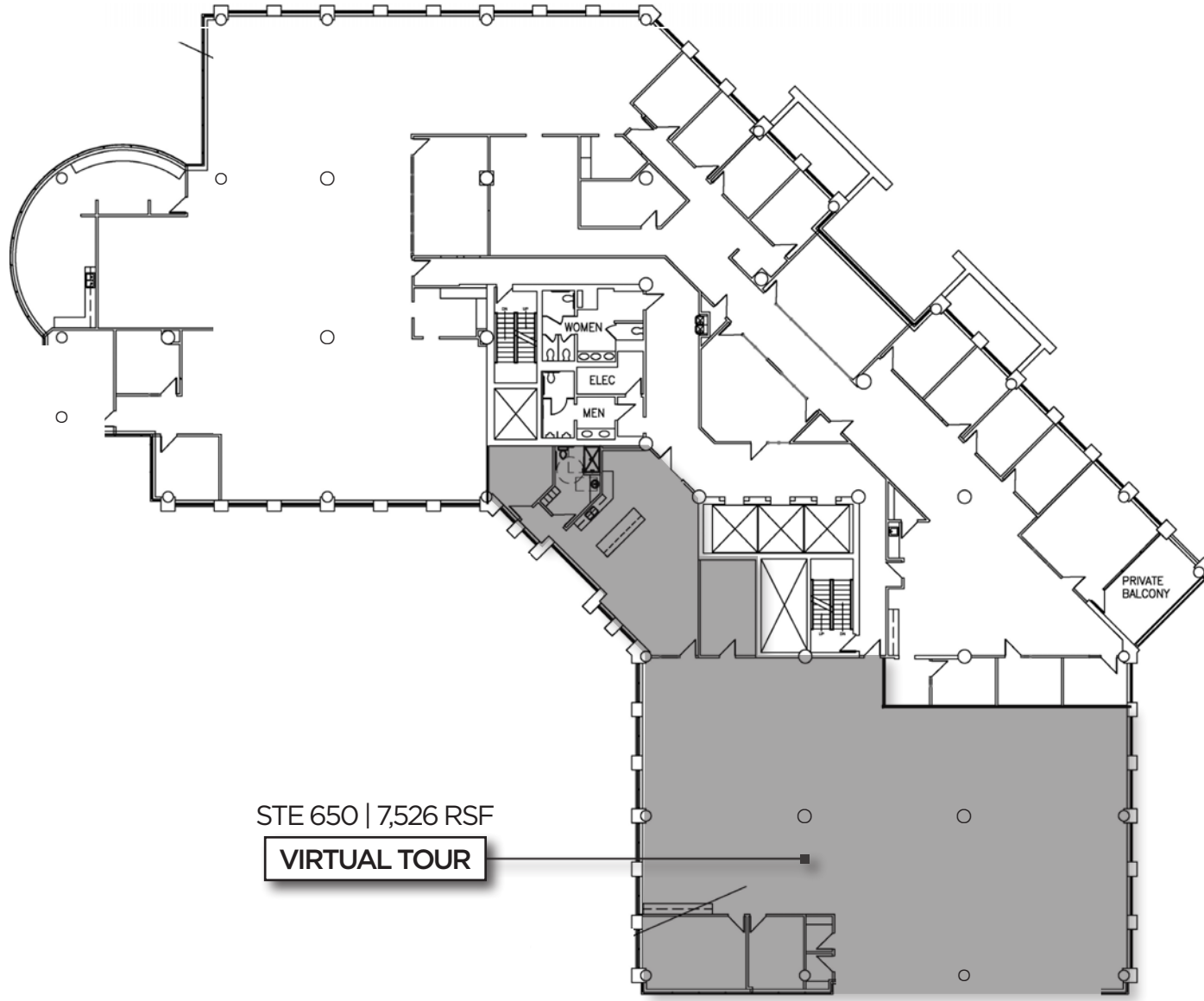
3RD FLOOR - 7007 COLLEGE



4TH FLOOR - 7007 COLLEGE



6TH FLOOR - 7007 COLLEGE



STE 650 | 7,526 RSF

VIRTUAL TOUR



7015 COLLEGE



SUITES RANGING FROM 4,151 - 5,058 SF

PARKING RATIO: 3.4 / 1,000
(1:1,000 COVERED PARKING)

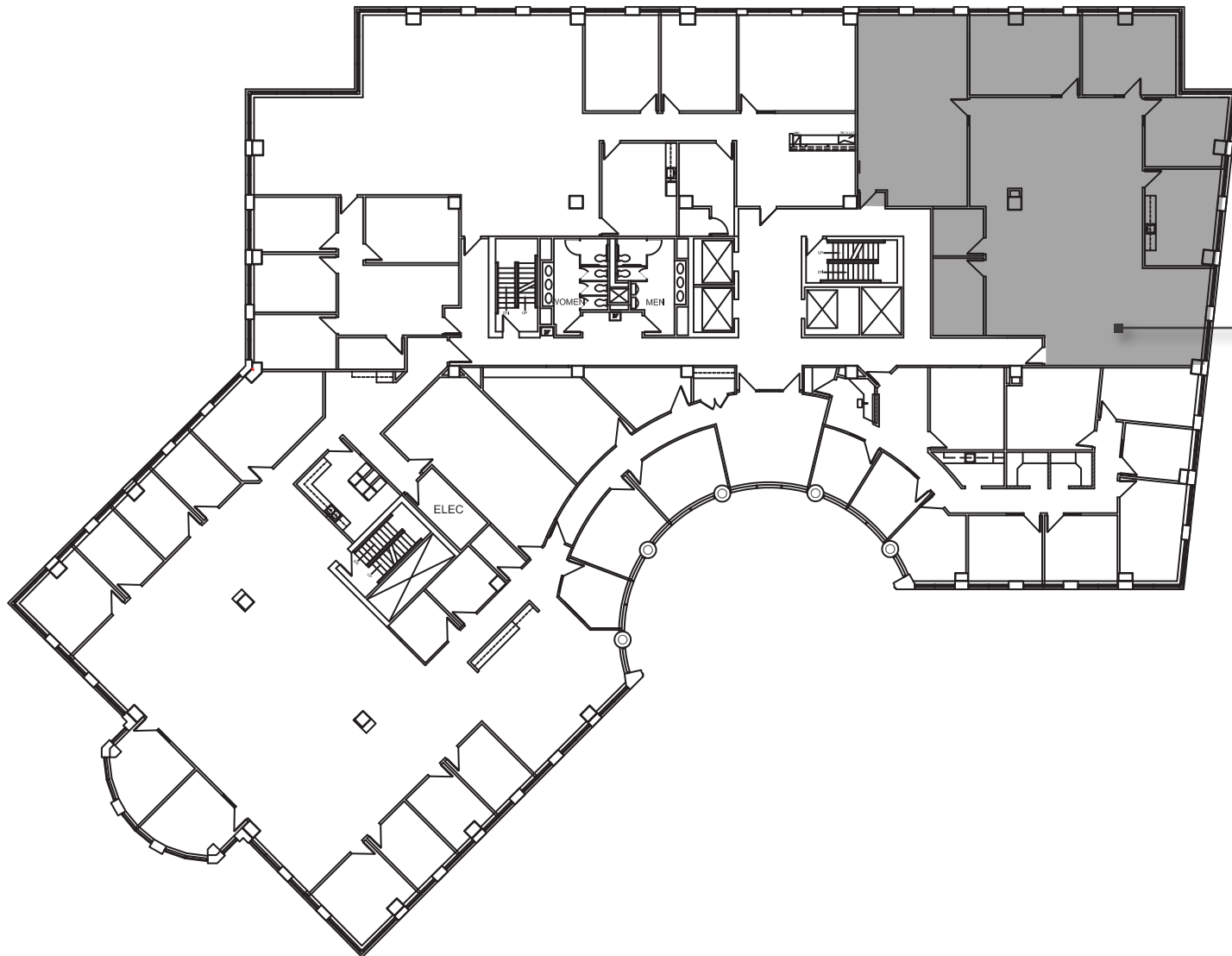
DELI LOCATED WITHIN THE BUILDING



2ND FLOOR - 7015 COLLEGE



3RD FLOOR - 7015 COLLEGE



STE 350 | 4,151 RSF
VIRTUAL TOUR



IN YOUR AREA



PARK RENAISSANCE



PARK RENAISSANCE is centrally located in Johnson County within the College Blvd corridor and is easily accessible to major highways, including I-35 which is a great advantage for businesses needing connectivity.

The two-building property is surrounded by numerous amenities, including shopping centers, restaurants, and entertainment options, making it convenient for tenants and enhancing overall satisfaction and productivity.

CONTACT

LEASING:

DREW HARDING

D 816.777.2859

E DHARDING@OPENAREA.COM

TIM SCHAFFER

D 816.876.2535

E TSCHAFFER@OPENAREA.COM

OWNED & MANAGED BY:



Price Brothers

AREA
REAL ESTATE ADVISORS