



3457 5th Ave S, St. Petersburg, FL 33711



💰 Purchase Price: **\$890,000**

📏 Unit Size: **4,130 SF On .24 Acres**

✅ Available: **Now**

Jay Billings

Commercial Specialist

(636) 219-9156

jay@cprteam.com

Harrison Gault

Sale Associate

(727) 677-8070

harrison@cprteam.com

Highlights



17 FT Clear In 1600 SF Warehouse



Showroom/Office Flex Space



10x10 Roll-Up Door



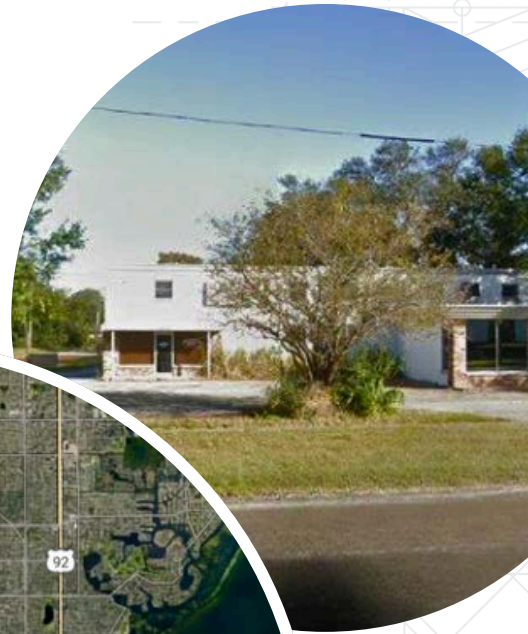
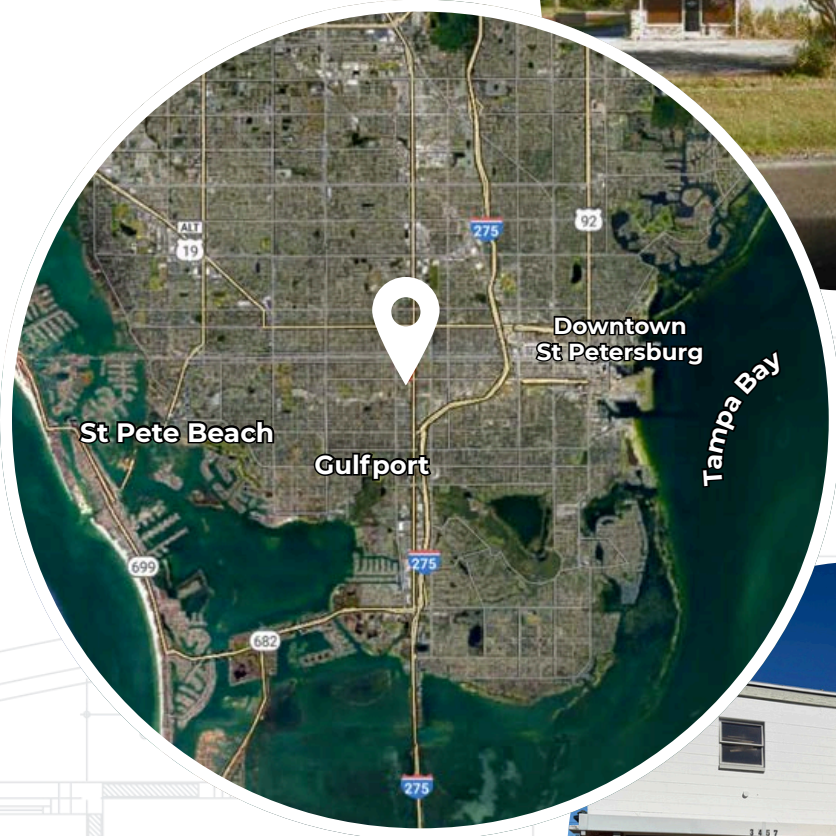
Upper Mezzanine For Added Storage

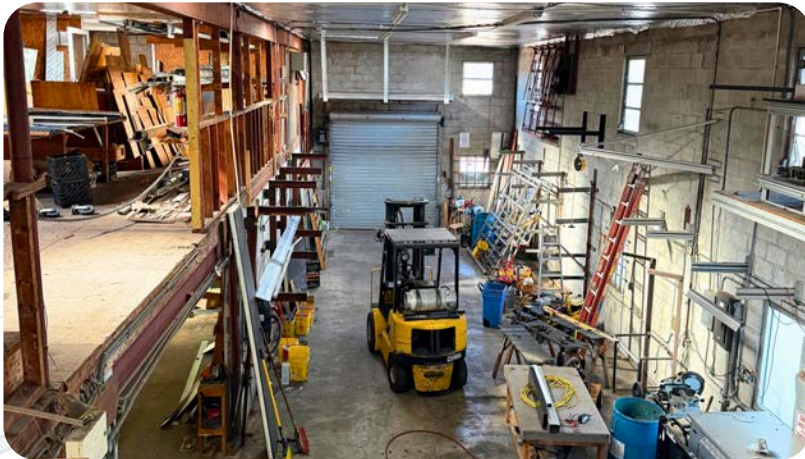


Standalone building In Childs Park Neighborhood



400 SF Hair Salon Occupying Side Unit





Zoning and Potential Use

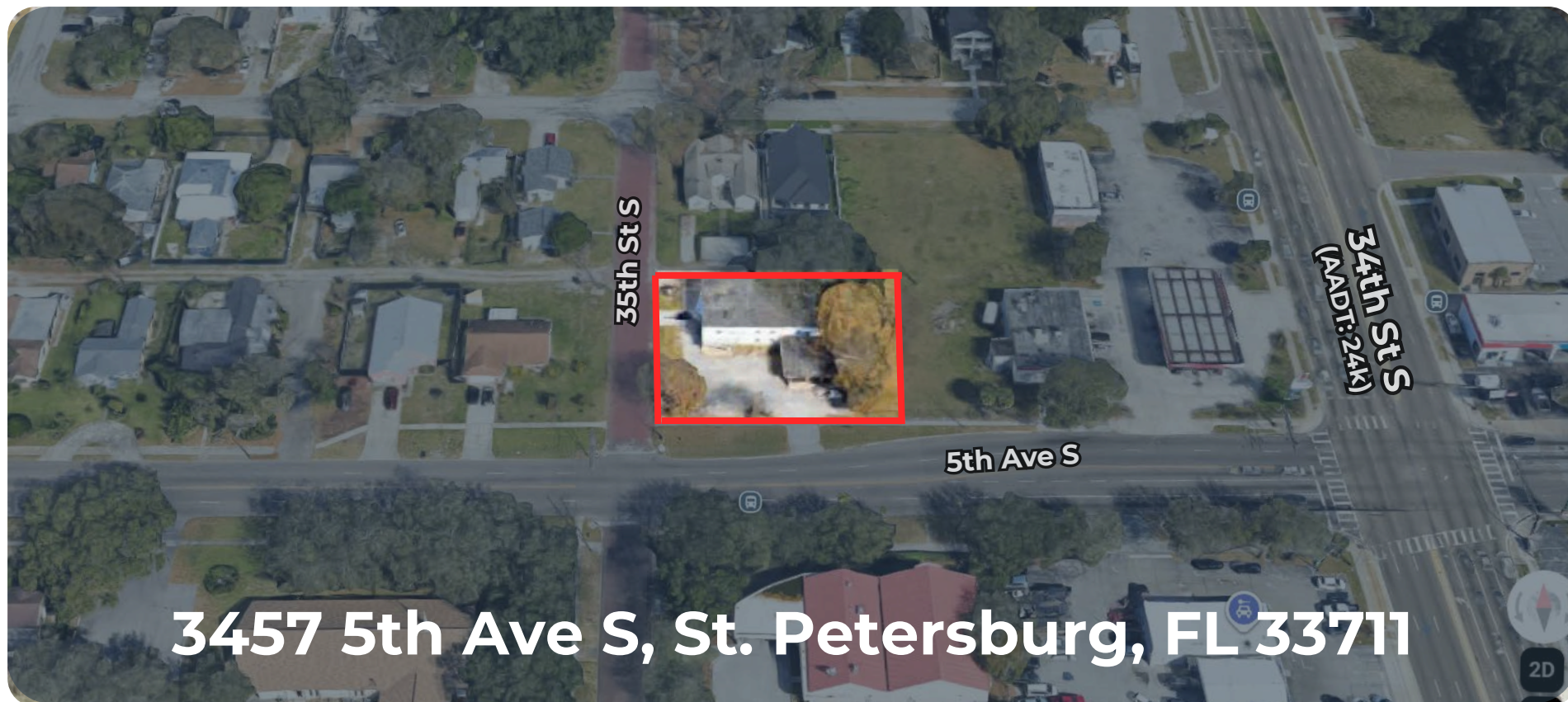
Zoning CCS-1:

CCS-1 zoning allows for a broad range of commercial uses, including office, retail, and service businesses. This flexibility gives owners and investors more options for leasing and future use, making it well-suited for established commercial corridors and long-term value.

Potential Use:

- Office
- Vehicle Sales/Repair
- Retail Sale/Services
- Light Manufacturing
- Warehouse (Grandfathered)
- Fitness
- Church





This 4,130 SF commercial property sits on 0.24 acres along a high-traffic corridor with approximately 24,000 vehicles per day. Zoned CCS-1, the site allows for a wide range of uses, including office, retail, and service businesses, vehicle sales or repair, fitness, and light manufacturing, with a warehouse use grandfathered. The property also features a 400 SF salon tenant, providing existing occupancy and added flexibility for an owner or investor.

Listing Team



Jay Billings

Commercial Specialist

☎ (636) 219-9156

✉ jay@cprteam.com



Harrison Gault

Sale Associate

☎ (727) 677-8070

✉ harrison@cprteam.com

☎ 727-822-4715

🌐 www.cprteam.com

🔗 CommercialPartnersRealty