

±1,500 – 3,000 SF

Industrial Space For Lease

Fourth Capital

3205 Industrial Way SW, Snellville, GA 30039



 **13.4 Miles**  **12.8 Miles**  **42.0 Miles**
Snellville | 2.3 Miles **Lawrenceville | 9.5 Miles**

Property Highlights

- ± 1,500 – 3,000 SF office / warehouse units available
- Newly renovated
- One (1) drive-in door (10' X 12')
- 14' ceiling height
- M1 zoning
- Strategic Location

Leasing Contacts

Murray Gray
M (404) 384-4524
Murray@fourth-capital.com

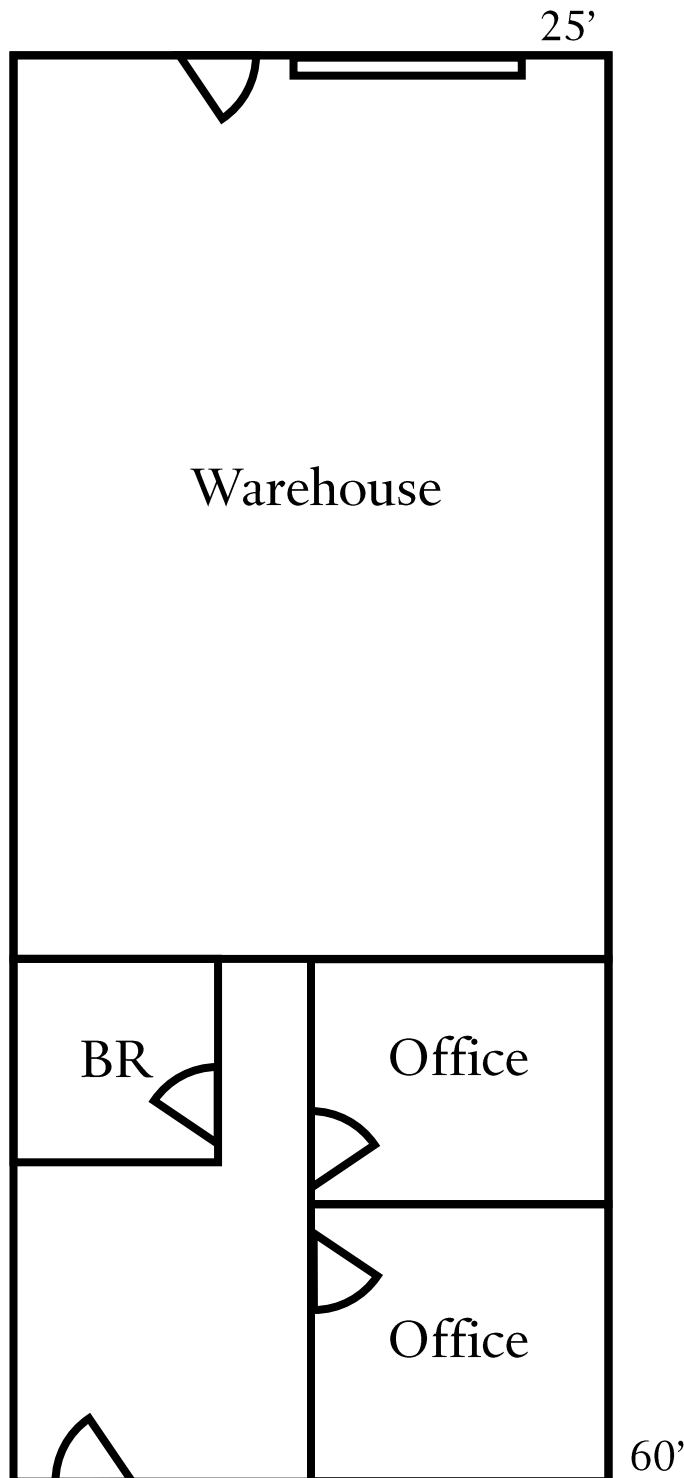
Braden Payne
M (336) 944-2171
Braden@fourth-capital.com

±1,500 – 3,000 SF

Industrial Space For Lease

Fourth Capital

3205 Industrial Way SW, Snellville, GA 30039



Suite 400 ± 1,500 SF

±1,500 – 3,000 SF

Industrial Space For Lease

Fourth Capital

3205 Industrial Way SW, Snellville, GA 30039



No warranty or representation, expressed or implied, is made as to the accuracy of the information contained herein, and same is submitted subject to error and omissions.