

33750 FORD ROAD
WESTLAND, MICHIGAN

RETAIL/OFFICE FOR LEASE
600-1,200 Square Feet Available



SIGNATURE ASSOCIATES
KNOW SIGNATURE | KNOW RESULTS



PROPERTY FEATURES

- 1,200 square feet available
- Opportunity to lease just the office or storage (600 square feet each)
- Recently updated to move-in condition
- Located on well-traveled Ford Road
- Good demographics and traffic counts
- Lease Rate: \$2,000/month NNN



For more information, please contact:

JUSTIN GAFFREY
(248) 799 3143
jgaffrey@signatureassociates.com

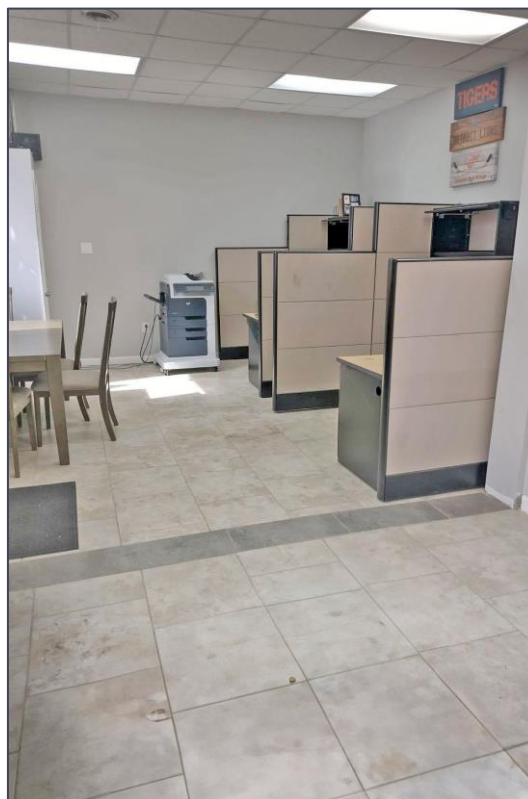
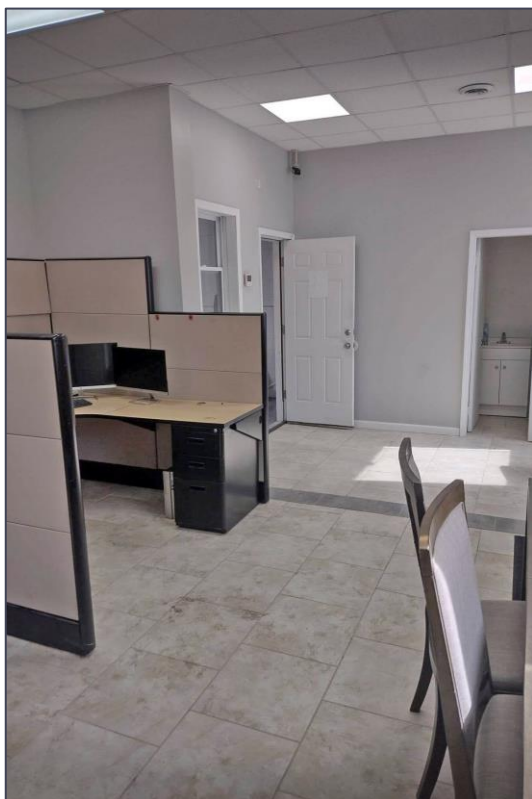
SIGNATURE ASSOCIATES
One Towne Square, Suite 1200
Southfield, MI 48076
www.signatureassociates.com

33750 Ford Road – Westland, Michigan

Retail/Office For Lease

600 - 1,200
Square Feet
AVAILABLE

Interior Photos



For more information, please contact:

JUSTIN GAFFREY

(248) 799 3143

jgaffrey@signatureassociates.com

SIGNATURE ASSOCIATES

One Towne Square, Suite 1200

Southfield, MI 48076

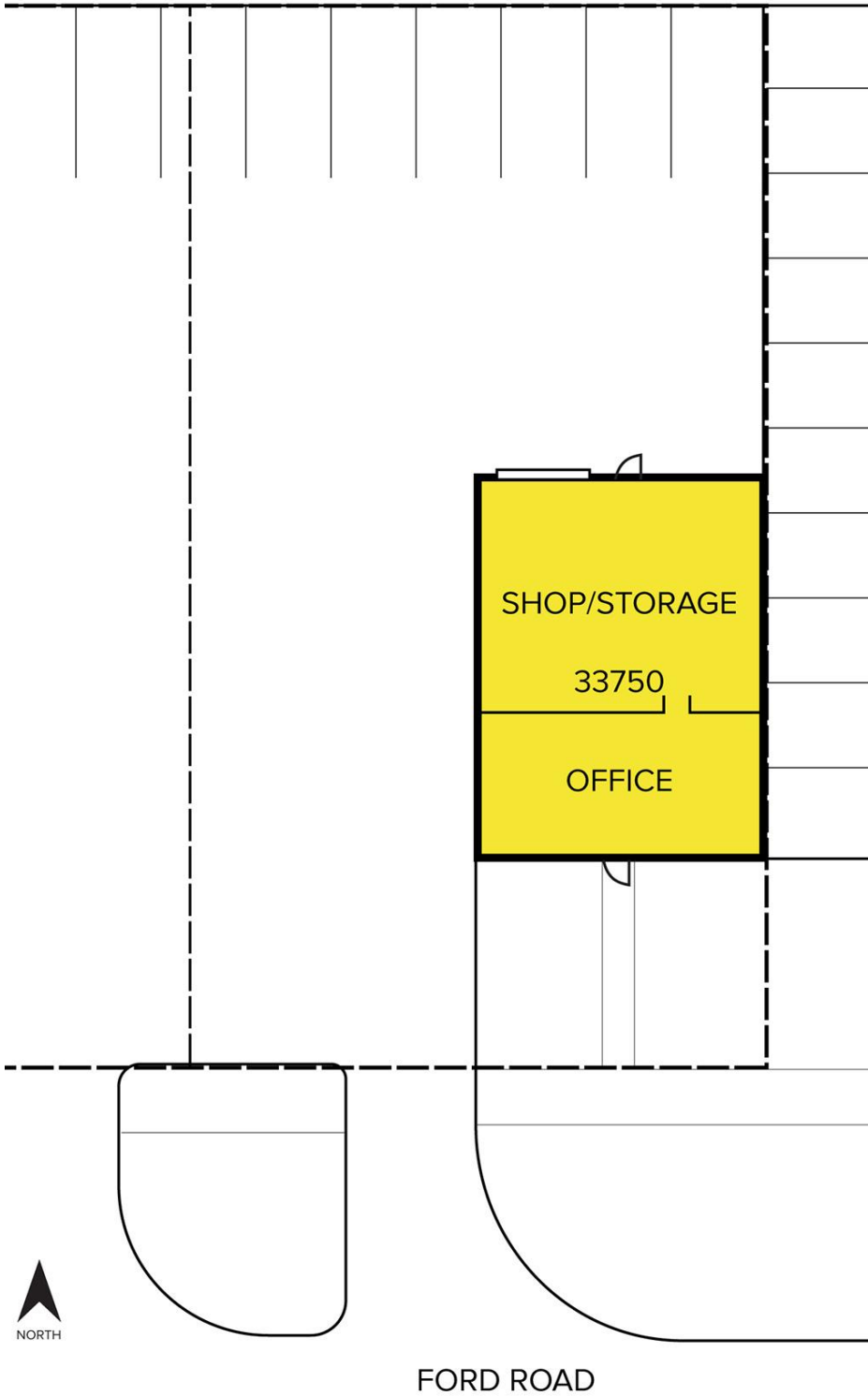
www.signatureassociates.com

33750 Ford Road – Westland, Michigan

Retail/Office For Lease

600 - 1,200
Square Feet
AVAILABLE

Site Plan



For more information, please contact:

JUSTIN GAFFREY
(248) 799 3143
jgaffrey@signatureassociates.com

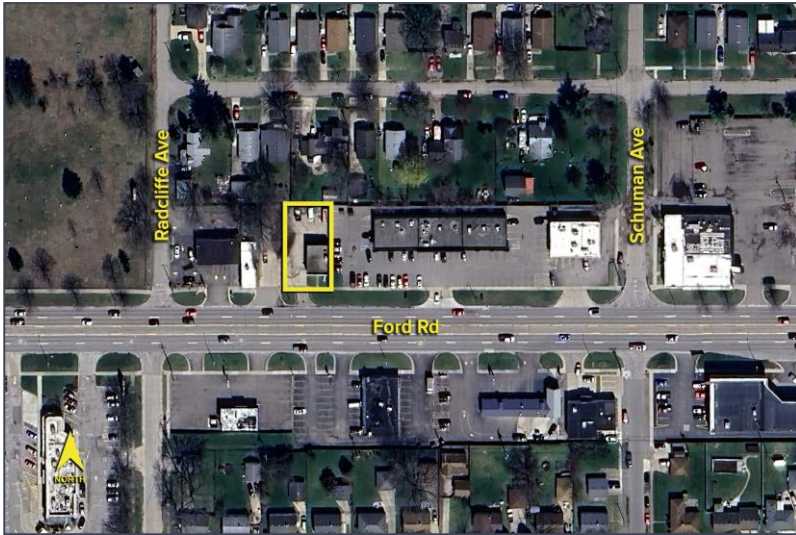
SIGNATURE ASSOCIATES
One Towne Square, Suite 1200
Southfield, MI 48076
www.signatureassociates.com

Information is subject to verification and no liability for errors or omissions is assumed. Price is subject to change and listing withdrawal.

33750 Ford Road – Westland, Michigan

Retail/Office For Lease

600 - 1,200
Square Feet
AVAILABLE

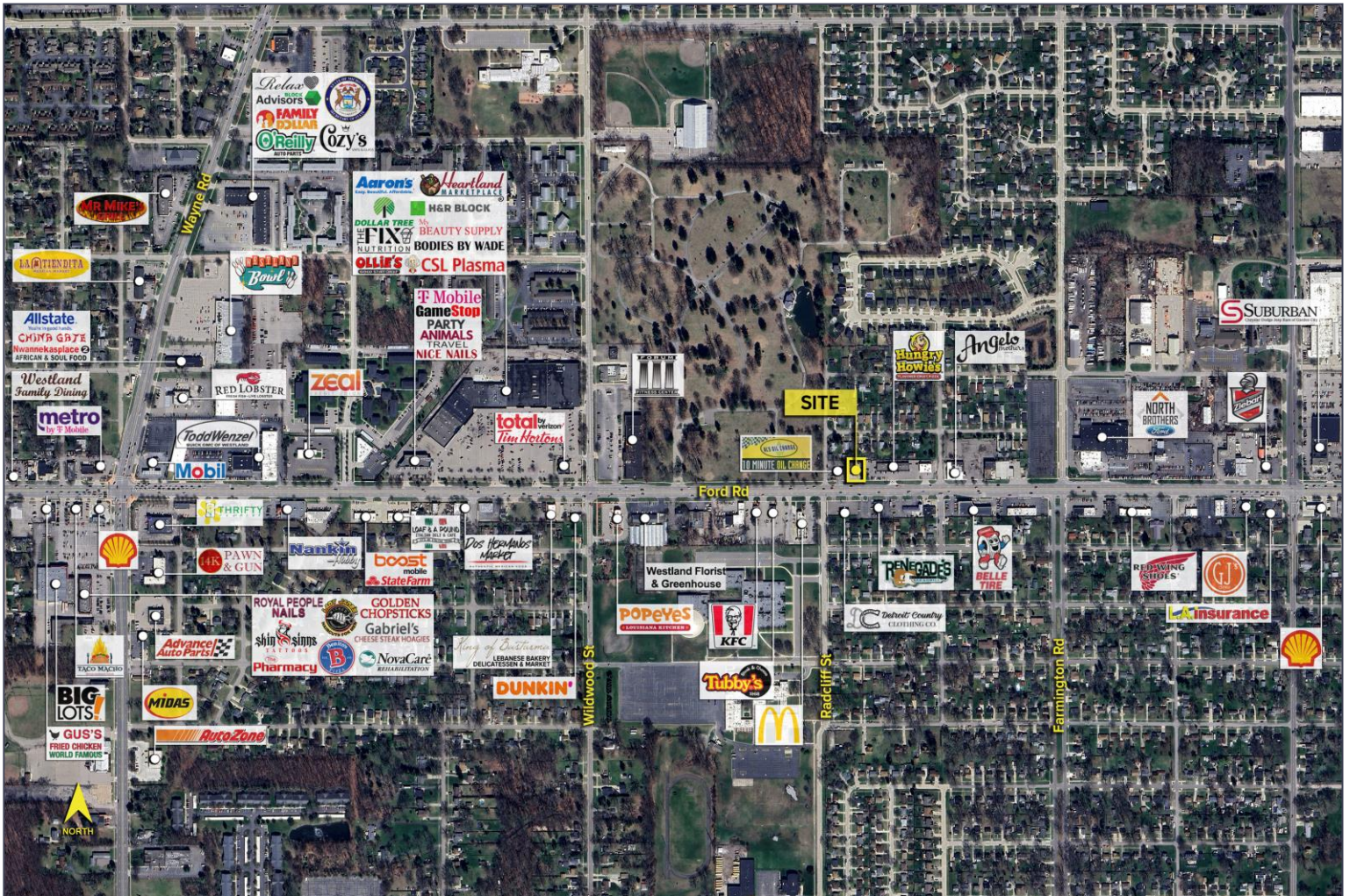


DEMOGRAPHICS

	POPULATION	MED. HH INCOME
1 MILE	12,456	\$62,569
3 MILE	114,818	\$66,020
5 MILE	266,468	\$71,692

TRAFFIC COUNTS (TWO-WAY)

41,421	Ford Rd. E of Wildwood St.
41,230	Ford Rd. W of Wildwood St.
6,454	Wildwood St. N of Ford Rd.
6,300	Wildwood St. S of Ford Rd.



For more information, please contact:

JUSTIN GAFFREY
(248) 799 3143
jgaffrey@signatureassociates.com

SIGNATURE ASSOCIATES
One Towne Square, Suite 1200
Southfield, MI 48076
www.signatureassociates.com