

# MILLWOOD/CHAPPAQUA (NY)

2<sup>nd</sup> Generation End-Cap Former Pizzeria with Basement  
238 Saw Mill River Road, Millwood, NY 10546

ADMIRAL  
REAL ESTATE SERVICES



## MILLWOOD TOWN PLAZA

LOCATED IN AFFLUENT NEW CASTLE -  
HOME TO BOTH CHAPPAQUA & MILLWOOD



2,000 SF  
CONTACT FOR  
RENTAL RATE

- Corner Location Directly on Saw Mill River Road
- Very Close to DeCicco's Market
- Kitchen Facilities with (2) Hoods
- Traffic Count: 18,000 VPD at Station St & Saw Mill River Rd
- (96) On-Site Parking Spaces
- Fantastic Signage Options
- Private Restrooms
- Up to 15 Foot Ceilings
- Situated Right off Taconic State Parkway



CONTACT OWNER'S  
EXCLUSIVE AGENT:

ALEC FREDERICO: [914-779-8200](tel:914-779-8200) x118 [alec@admiralrealestate.com](mailto:alec@admiralrealestate.com)

BROKERS  
PROTECTED

# MILLWOOD/CHAPPAQUA (NY)

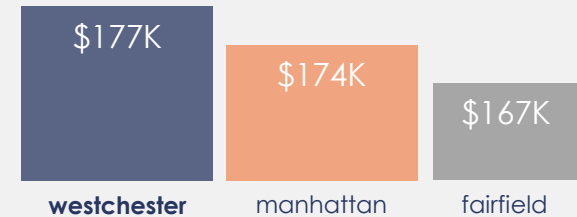
2<sup>nd</sup> Generation End-Cap Former Pizzeria with Basement  
238 Saw Mill River Road, Millwood, NY 10546



## NEW YORK'S WESTCHESTER COUNTY STRONG SPENDING POWER

\$22.1 billion in Westchester  
RETAIL DEMAND

### HIGH AVERAGE HOUSEHOLD INCOME



## BUILDING & SPACE SPECIFICS

- Kitchen Available with (2) Hoods in Place
- Private Restrooms
- Basement Included
- Natural Light
- Outdoor Seating Available
- High Ceilings – 10.6 Ft Drop in Place; 15 Ft if Drop Removed
- (96) Space Private Parking Lot
- Renovated Free-Standing Building
- Pylon Signage Available
- Other Uses Permitted Including General Retail, Office, Medical, Dental, Fitness, Urgent Care, etc.
- Zoning - BR (Business Retail)
- Near Chappaqua, Mount Kisco & Pleasantville
- Easy Access to Taconic State Parkway & Saw Mill River Parkway

## DEMOGRAPHICS

By Radius	1-Mile	2-Mile	3-Mile
Average HH Income	\$325,274	\$329,664	\$268,499
Median HH Income	\$200,001	\$200,001	\$191,037
Population	1,762	8,833	28,544
Total Households	592	2,793	9,721
Disposable Income	\$191,625	\$112,895	\$71,384
Medical Expenses	\$19,729	\$19,964	\$16,502

## KEY FACTS (2-Mile Radius of Site)

POPULATION	MEDIAN AGE
8,833	46.6
AVG INCOME	DISPOSABLE INCOME
\$329,664	\$112,895



CONTACT OWNER'S  
EXCLUSIVE AGENT:

ALEC FREDERICO: [914-779-8200](tel:914-779-8200) x118 [alec@admiralrealestate.com](mailto:alec@admiralrealestate.com)

BROKERS  
PROTECTED

MILLWOOD/CHAPPAQUA (NY)

2<sup>nd</sup> Generation End-Cap Former Pizzeria with Basement

238 Saw Mill River Road, Millwood, NY 10546

ADMIRAL  
REAL ESTATE SERVICES



## EXTERIOR PHOTOGRAPHS



CONTACT OWNER'S  
EXCLUSIVE AGENT:

ALEC FREDERICO: [914-779-8200](tel:914-779-8200) x118 [alec@admiralrealestate.com](mailto:alec@admiralrealestate.com)

BROKERS  
PROTECTED

# MILLWOOD/CHAPPAQUA (NY)

2<sup>nd</sup> Generation End-Cap Former Pizzeria with Basement

238 Saw Mill River Road, Millwood, NY 10546

ADMIRAL  
REAL ESTATE SERVICES



CONTACT OWNER'S  
EXCLUSIVE AGENT:

ALEC FREDERICO: [914-779-8200](tel:914-779-8200) x118 [alec@admiralrealestate.com](mailto:alec@admiralrealestate.com)

BROKERS  
PROTECTED

# MILLWOOD/CHAPPAQUA (NY)

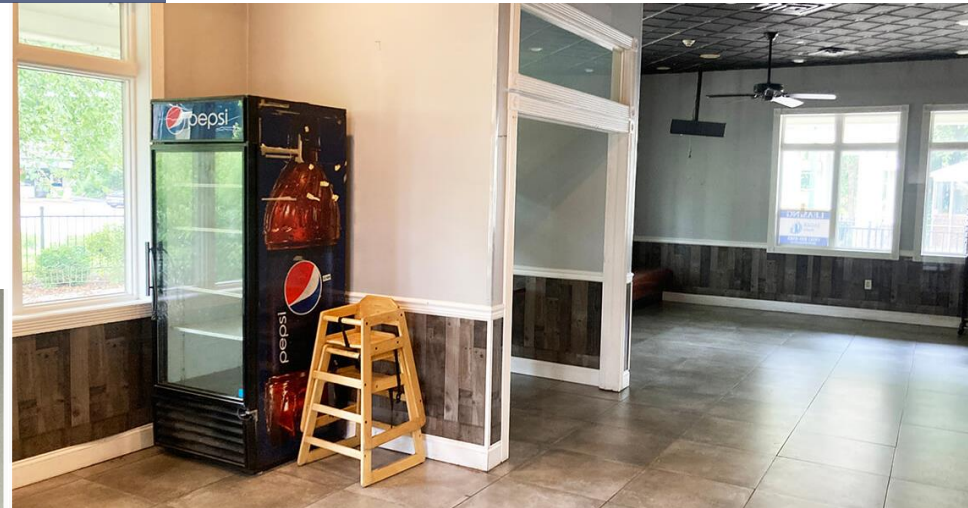
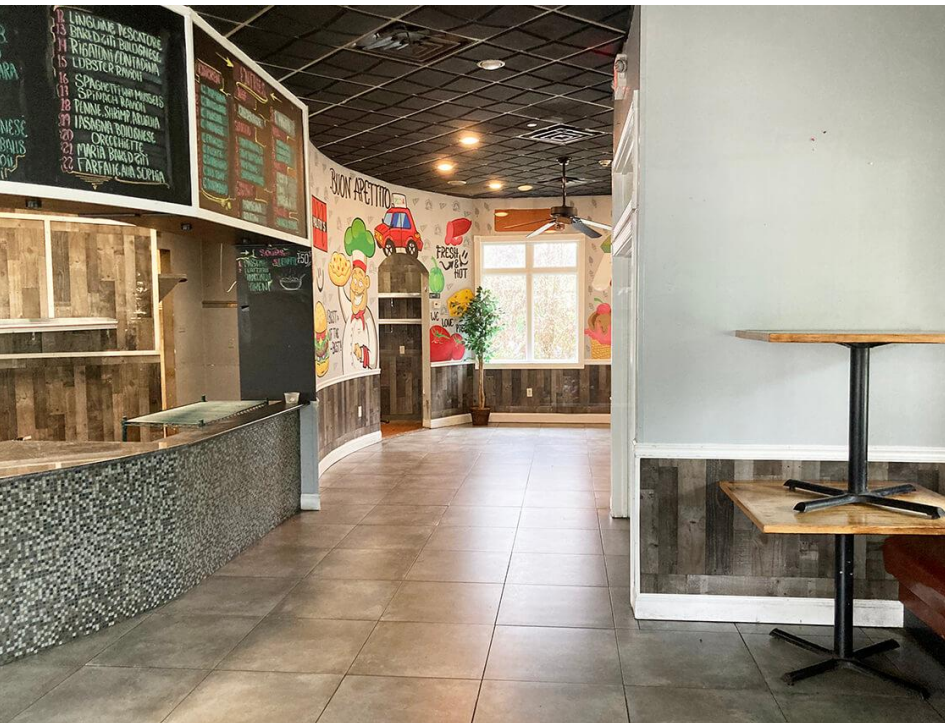
2<sup>nd</sup> Generation End-Cap Former Pizzeria with Basement

238 Saw Mill River Road, Millwood, NY 10546

ADMIRAL  
REAL ESTATE SERVICES



## INTERIOR PHOTOGRAPHS



CONTACT OWNER'S  
EXCLUSIVE AGENT:

ALEC FREDERICO: [914-779-8200](tel:914-779-8200) x118 [alec@admiralrealestate.com](mailto:alec@admiralrealestate.com)

BROKERS  
PROTECTED

# MILLWOOD/CHAPPAQUA (NY)

2<sup>nd</sup> Generation End-Cap Former Pizzeria with Basement

238 Saw Mill River Road, Millwood, NY 10546

ADMIRAL  
REAL ESTATE SERVICES



CONTACT OWNER'S  
EXCLUSIVE AGENT:

ALEC FREDERICO: [914-779-8200](tel:914-779-8200) x118 [alec@admiralrealestate.com](mailto:alec@admiralrealestate.com)

BROKERS  
PROTECTED

# MILLWOOD/CHAPPAQUA (NY)

2<sup>nd</sup> Generation End-Cap Former Pizzeria with Basement

238 Saw Mill River Road, Millwood, NY 10546

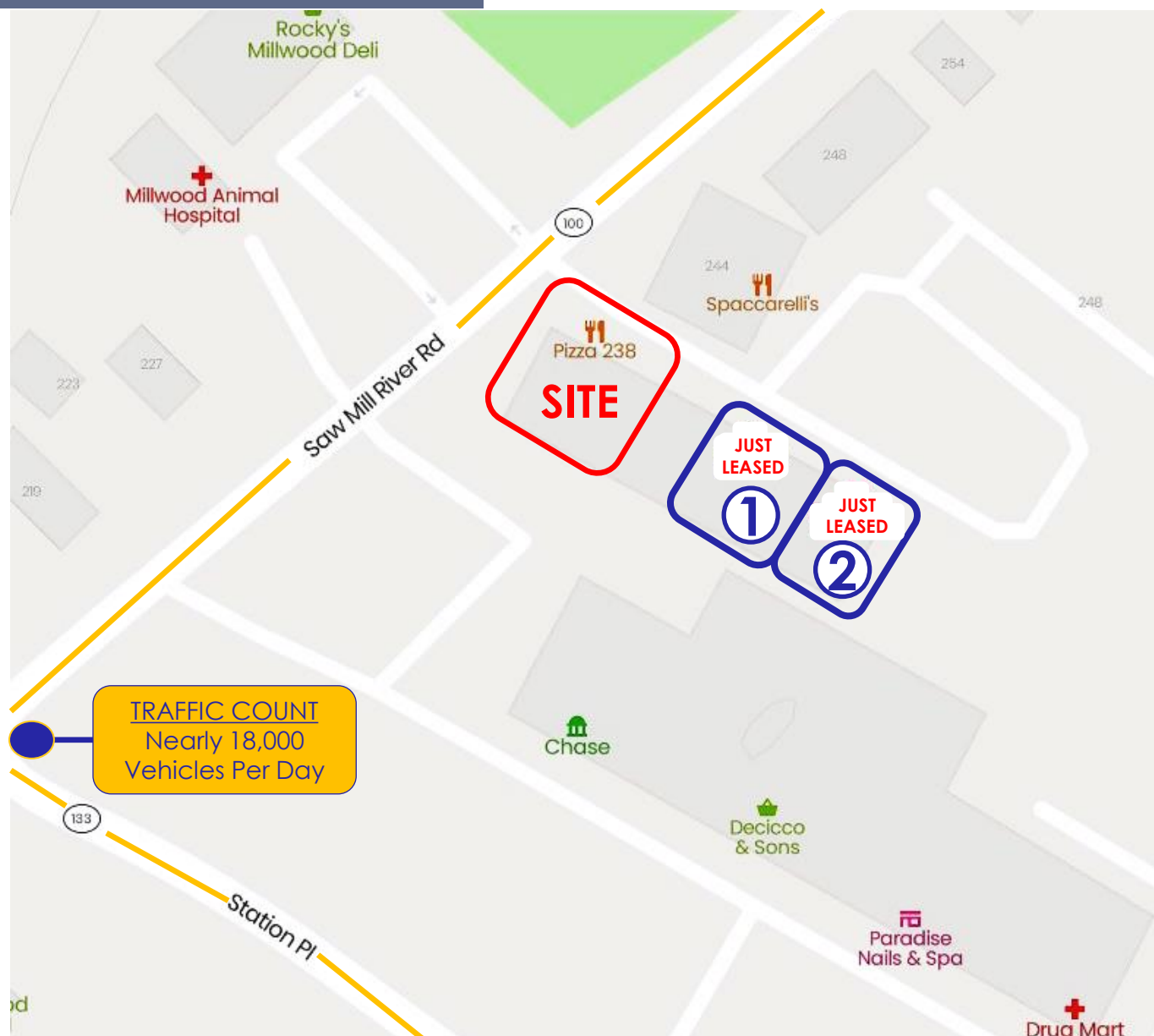


## SITE MAP

- 1. Recently Leased To Crank Cycles



- 2. Recently Leased To Born Fit Training Academy



# MILLWOOD/CHAPPAQUA (NY)

2<sup>nd</sup> Generation End-Cap Former Pizzeria with Basement

238 Saw Mill River Road, Millwood, NY 10546

ADMIRAL  
REAL ESTATE SERVICES



PARKING  
AERIAL



CONTACT OWNER'S  
EXCLUSIVE AGENT:

ALEC FREDERICO: [914-779-8200](tel:914-779-8200) x118 [alec@admiralrealestate.com](mailto:alec@admiralrealestate.com)

BROKERS  
PROTECTED



# MILLWOOD/CHAPPAQUA (NY)

2<sup>nd</sup> Generation End-Cap Former Pizzeria with Basement

238 Saw Mill River Road, Millwood, NY 10546



LOCAL  
RETAIL  
AERIAL



# MILLWOOD/CHAPPAQUA (NY)

2<sup>nd</sup> Generation End-Cap Former Pizzeria with Basement

238 Saw Mill River Road, Millwood, NY 10546

ADMIRAL  
REAL ESTATE SERVICES



HIGHWAY  
ACCESS



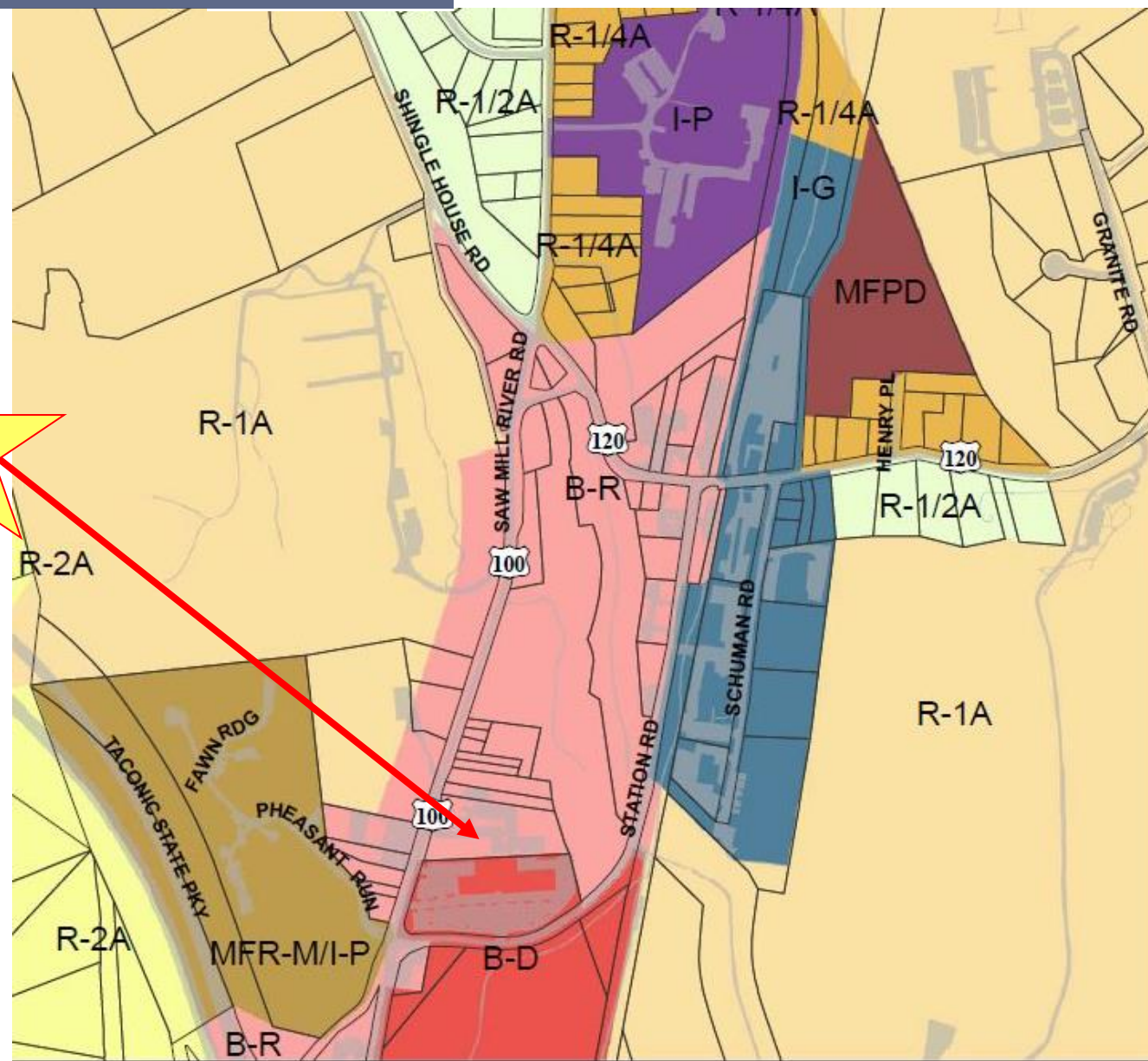
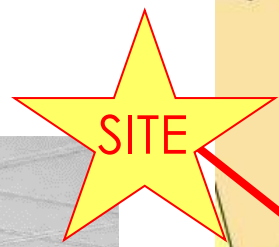
# MILLWOOD/CHAPPAQUA (NY)

2<sup>nd</sup> Generation End-Cap Former Pizzeria with Basement

238 Saw Mill River Road, Millwood, NY 10546



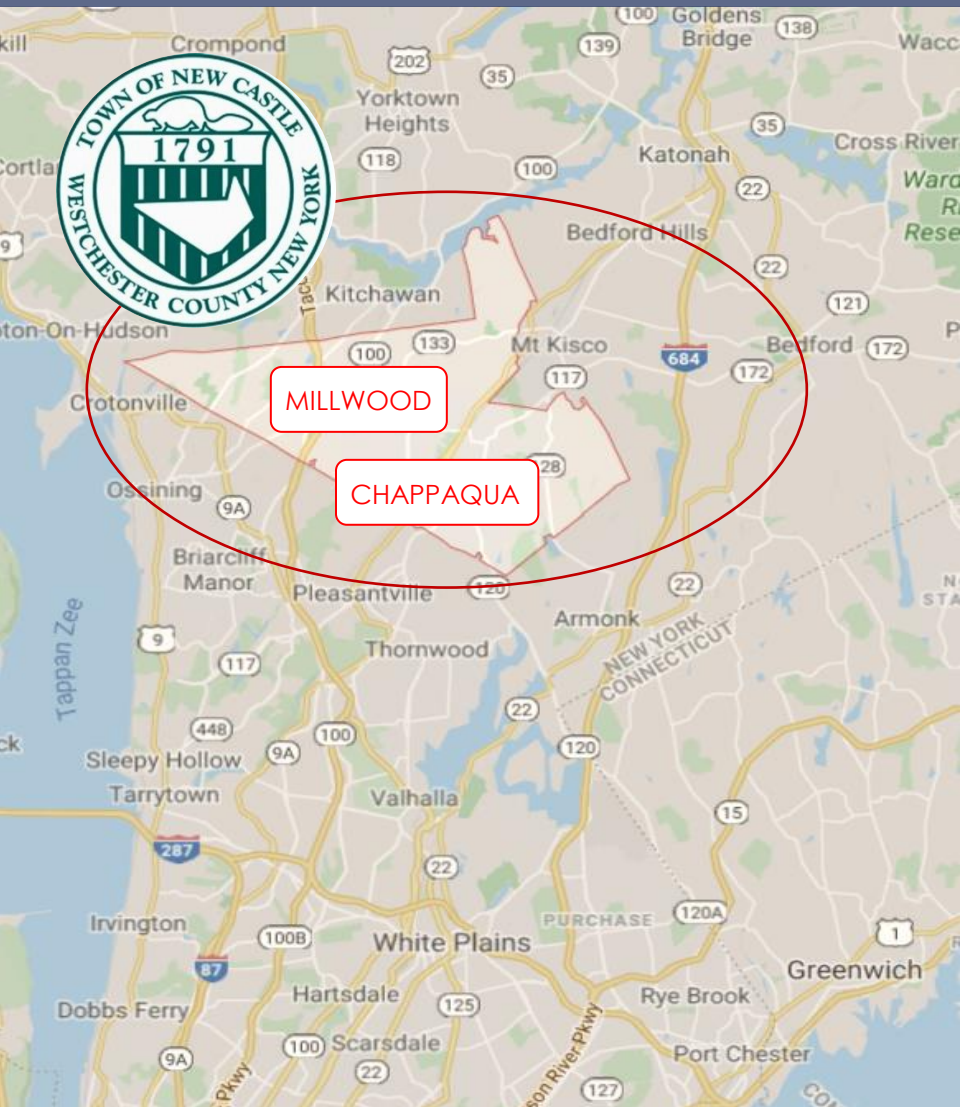
MILLWOOD  
TOWN PLAZA  
Zoning Map (Draft)



# MILLWOOD/CHAPPAQUA (NY)

2<sup>nd</sup> Generation End-Cap Former Pizzeria with Basement  
238 Saw Mill River Road, Millwood, NY 10546

ADMIRAL  
REAL ESTATE SERVICES



## TOWN OF NEW CASTLE Millwood & Chappaqua

Comprising the affluent hamlets of Chappaqua and Millwood, New Castle is well-known for its top schools and its convenient location, which is centrally situated in Westchester County, approximately 30 miles north of Manhattan.

New Castle is crossed by two major north-south arteries: Taconic State Parkway, which runs through Millwood, and Saw Mill River Parkway, which runs through Chappaqua. The town is also served by the Chappaqua station of the Metro-North Railroad's Harlem Line, which abuts Chappaqua's downtown area.

Neighboring municipalities include Armonk, Briarcliff Manor, Mount Kisco, Ossining and Pleasantville.



CONTACT OWNER'S  
EXCLUSIVE AGENT:

ALEC FREDERICO: [914-779-8200](tel:914-779-8200) x118 [alec@admiralrealestate.com](mailto:alec@admiralrealestate.com)

BROKERS  
PROTECTED