



R&R Commercial Realty, Inc.

FLEX WAREHOUSE SPACE

FLEX WAREHOUSE SPACE FOR LEASE
20354 SUSSEX HWY., BRIDGEVILLE DE 19933

THE SPACE

Location

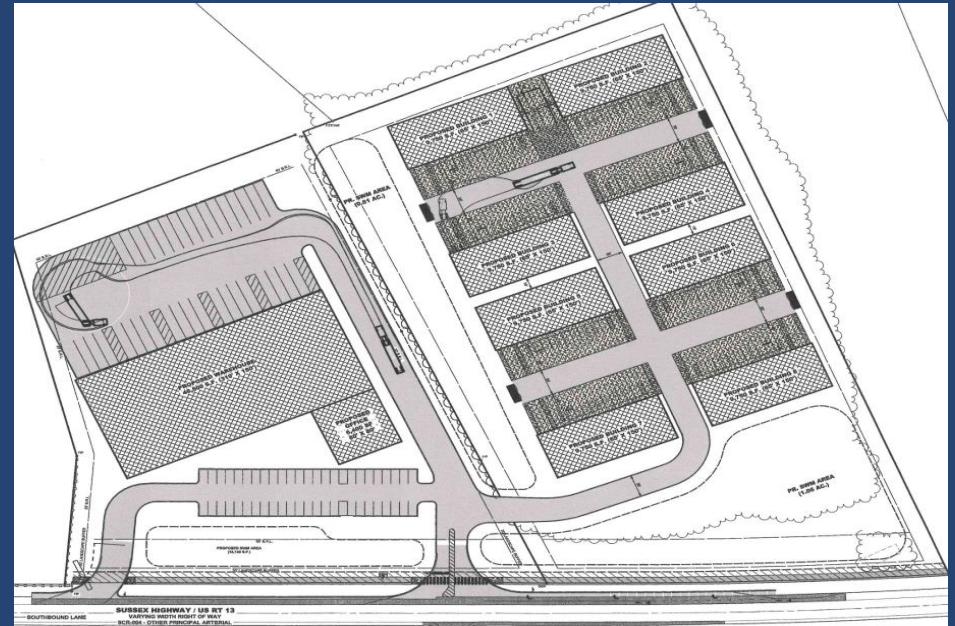
20354 Sussex Hwy.
Bridgeville, DE 19933

County

Sussex

HIGHLIGHTS

- ❖ Build to Suit Flex Warehouse space available For Lease
- ❖ 1,200+/-sf - 10,000+/-sf available
- ❖ 10,000+/-sf - 30,000+/-sf build to suit



POPULATION

1.00 MILE	3.00 MILE	5.00 MILE
1,030	9,064	27,412

AVERAGE HOUSEHOLD INCOME

1.00 MILE	3.00 MILE	5.00 MILE
\$99,405	\$92,605	\$91,933

NUMBER OF HOUSEHOLDS

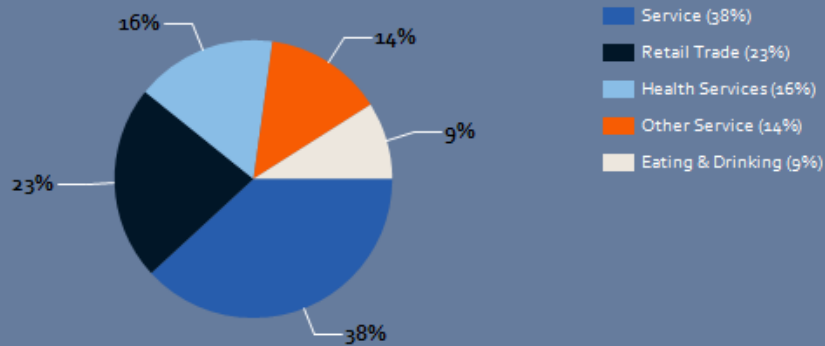
1.00 MILE	3.00 MILE	5.00 MILE
445	3,512	10,526



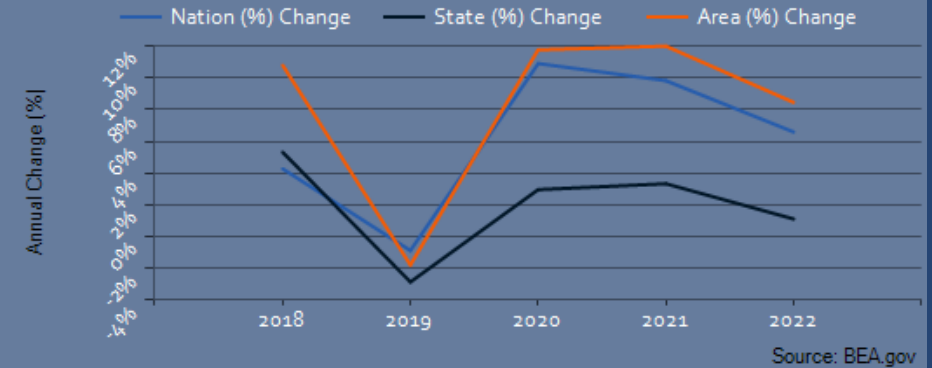
Charles Rodriguez
Broker
(302) 674-3400
ccrod1@aol.com

R&R Commercial Realty
46 S. State Street, Dover, DE 19901

Major Industries by Employee Count

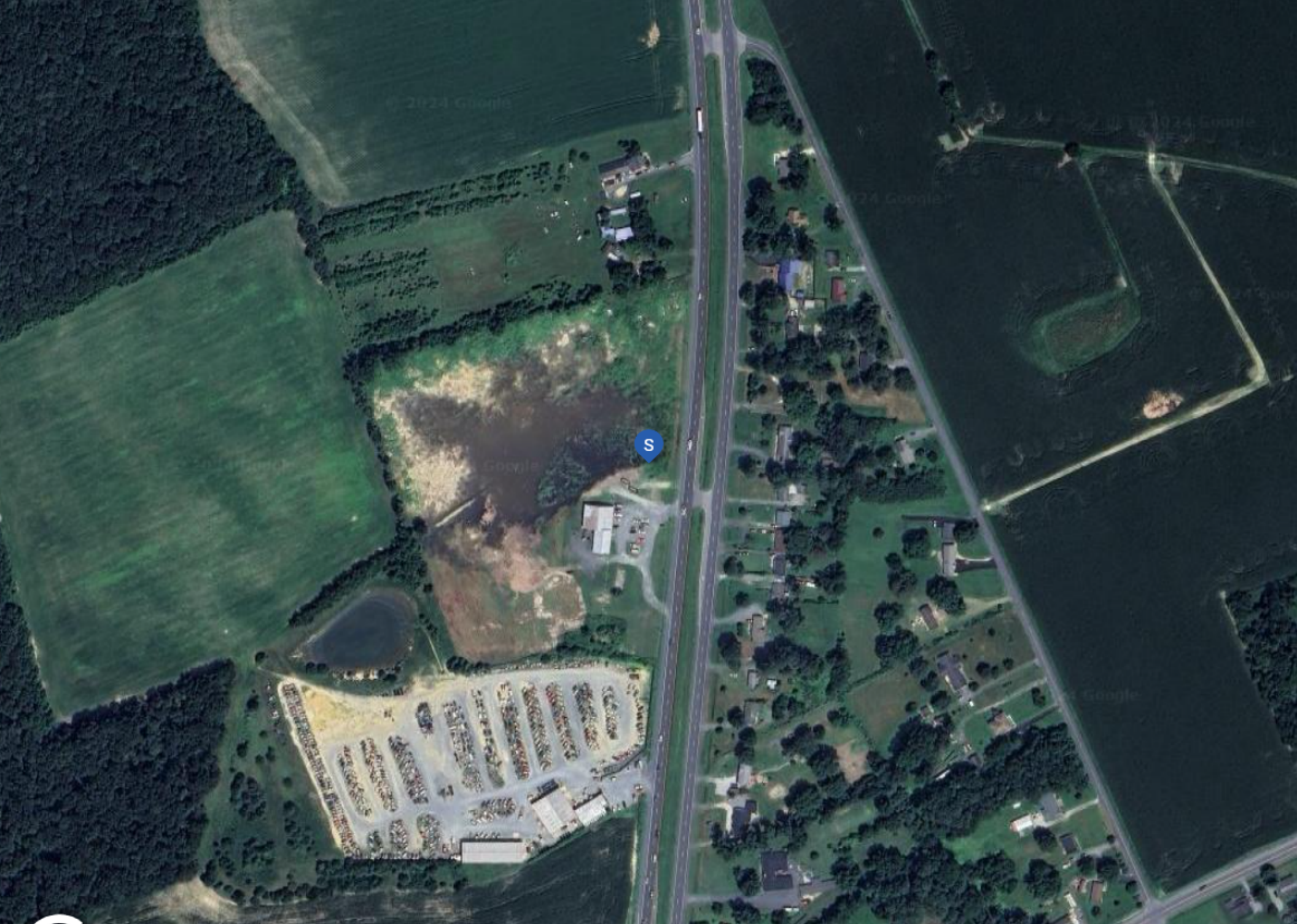


Sussex County GDP Trend



Largest Employers

McDonald's	10,000
FedEx	10,000
Dollar General	10,000
Walgreens	10,000
Family Dollar	10,000
DHL	10,000
Domino's	10,000
Cintas	10,000



Charles Rodriguez
Broker
(302) 674-3400
ccrod1@aol.com

R&R Commercial Realty
46 S. State Street, Dover, DE 19901

Aerial Map | Flex Warehouse Space







Flex Warehouse Space

CONFIDENTIALITY and DISCLAIMER

All information contained herein is believed to be accurate, however was obtained from third parties and R & R Commercial Realty, Inc. does not warrant as to the accuracy submitted, subject to changes or modification without notice. Listing Broker represents the sellers interest.

Exclusively Marketed by:

Charles Rodriguez

R&R Commercial Realty

Broker

(302) 674-3400

ccrod1@aol.com



<http://www.randrcommercialrealty.com>

46 S. State Street, Dover, DE 19901

powered by CREOP