



## SPACE DETAILS

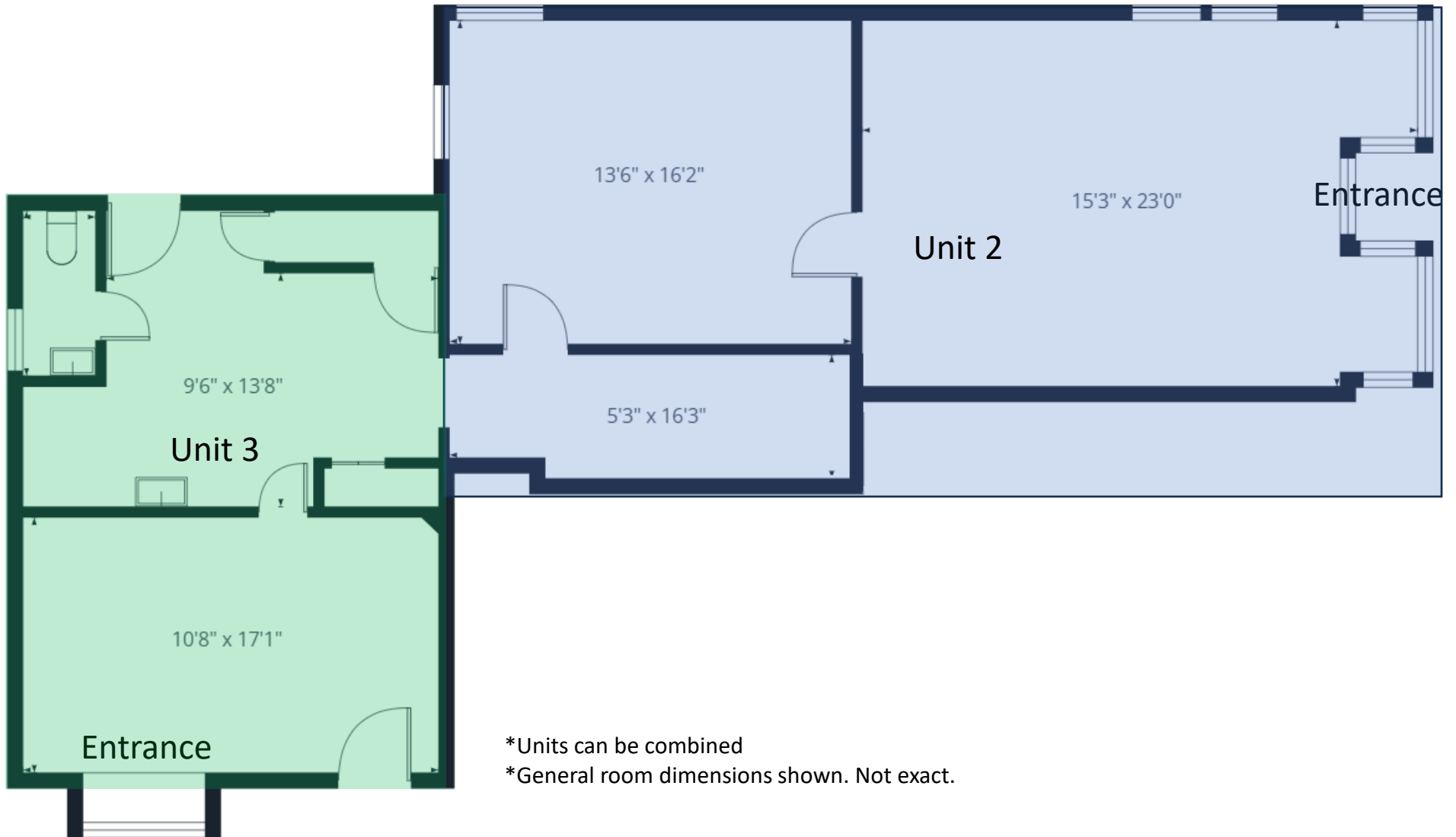
|                           | Unit 2         | Unit 3         | Unit 1&2         |
|---------------------------|----------------|----------------|------------------|
| <b>Total Unit Size SF</b> | <b>±700 SF</b> | <b>±400 SF</b> | <b>±1,100 SF</b> |

## AVAILABILITY SUMMARY

Retail/office space available on Main Street in Netcong, NJ. This prime location is in the center of a rapidly developing area with a growing client base. Close proximity to route 46, 206, 80, and the Netcong train station.

The available space can be divided into 2 units (±700 SF and ±400 SF) or Leased together. The building is serviced by both street and onsite parking. Landlord willing to lease as-is or make tenant improvements.







# 28 Main Street

Netcong, NJ 07857

**FOR LEASE**  
RETAIL | OFFICE

