

±1,830 SF SECOND-FLOOR MEDICAL OFFICE CONDOMINIUM

FOR SALE

750 MEDICAL CENTER COURT SUITE 10 CHULA VISTA, CA 91911

750



DIRECTLY ACROSS FROM SHARP CHULA VISTA MEDICAL CENTER | ELEVATOR SERVED | AMPLE PARKING



750 MEDICAL CENTER COURT

CHULA VISTA, CA 91911

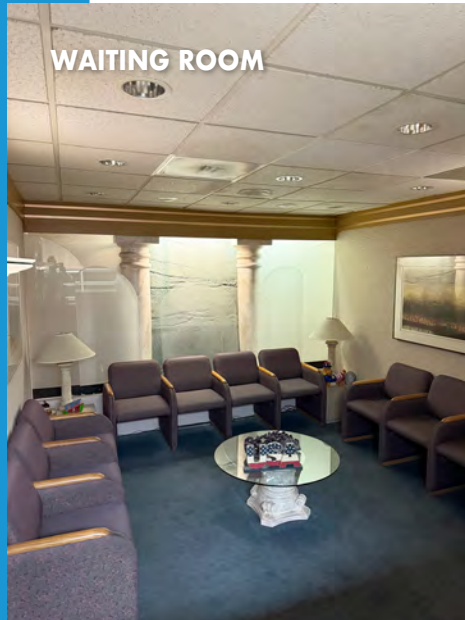
SUITE 10

- \pm 1,830 SF second-floor medical office condo
- Reception / nurses station
- Waiting room
- Seven private exam rooms
- Private doctor's office
- Conference room
- Laboratory
- Kitchenette

THE PROPERTY

- \pm 20,000 SF two-story medical office building
- Elevator served
- Ample parking (\pm 100 surface parking spaces)
- Located directly across from Sharp Chula Vista Medical Center

CONTACT BROKER FOR PRICING



WAITING ROOM



RECEPTION



NURSES STATION



CONFERENCE ROOM



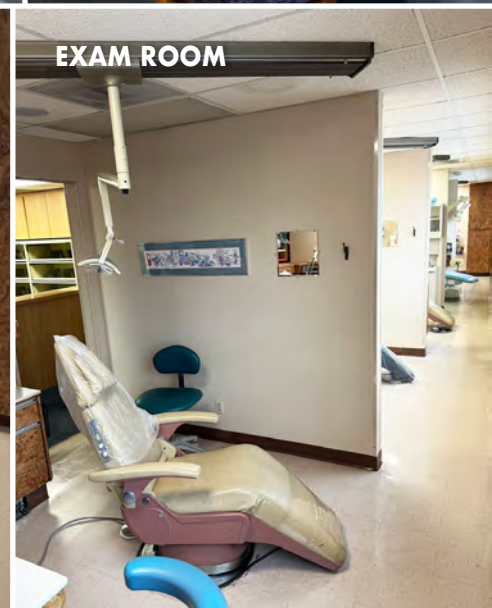
DOCTOR'S OFFICE



EXAM ROOM



EXAM ROOM



EXAM ROOM



KITCHENETTE

±1,830 SF SECOND-FLOOR MEDICAL OFFICE CONDOMINIUM

750 MEDICAL CENTER COURT CHULA VISTA, CA 91911

DEMOGRAPHICS



<p>19,776</p> <p>—</p> <p>2024 POPULATION 1 MILE RADIUS</p>	<p>5,196</p> <p>—</p> <p>DAYTIME EMPLOYEES 1 MILE RADIUS</p>
<p>\$135,135</p> <p>—</p> <p>AVERAGE HH INCOME 1 MILE RADIUS</p>	<p>\$265M+</p> <p>—</p> <p>CONSUMER SPENDING 1 MILE RADIUS</p>
<p>39.3</p> <p>—</p> <p>MEDIAN AGE 1 MILE RADIUS</p>	<p>\$755,386</p> <p>—</p> <p>MEDIAN HOME VALUE 1 MILE RADIUS</p>

750 MEDICAL CENTER COURT SUITE 10 CHULA VISTA, CA 91911

±1,830 SF SECOND-FLOOR MEDICAL OFFICE CONDOMINIUM

750

For information or to tour the property,
please contact:

JONATHAN DODGE
Associate

† 619.541.2095
jdodge@lee-associates.com
CA RE Lic. #02191825

**LEE &
ASSOCIATES**
COMMERCIAL REAL ESTATE SERVICES

All information furnished regarding property for sale, rental or financing is from sources deemed reliable, but no warranty or representation is made to the accuracy thereof and same is submitted subject to error, omissions, change of price, rental or other conditions prior to sale, lease or financing or withdrawal without notice. No liability of any kind is to be imposed on the broker herein.