

556 - 560 SUTTER

SAN FRANCISCO | CA

4,611 SF - 16,214 SF
FULL FLOORS AVAILABLE

SAN FRANCISCO BRICK & TIMBER OFFICE AVAILABLE

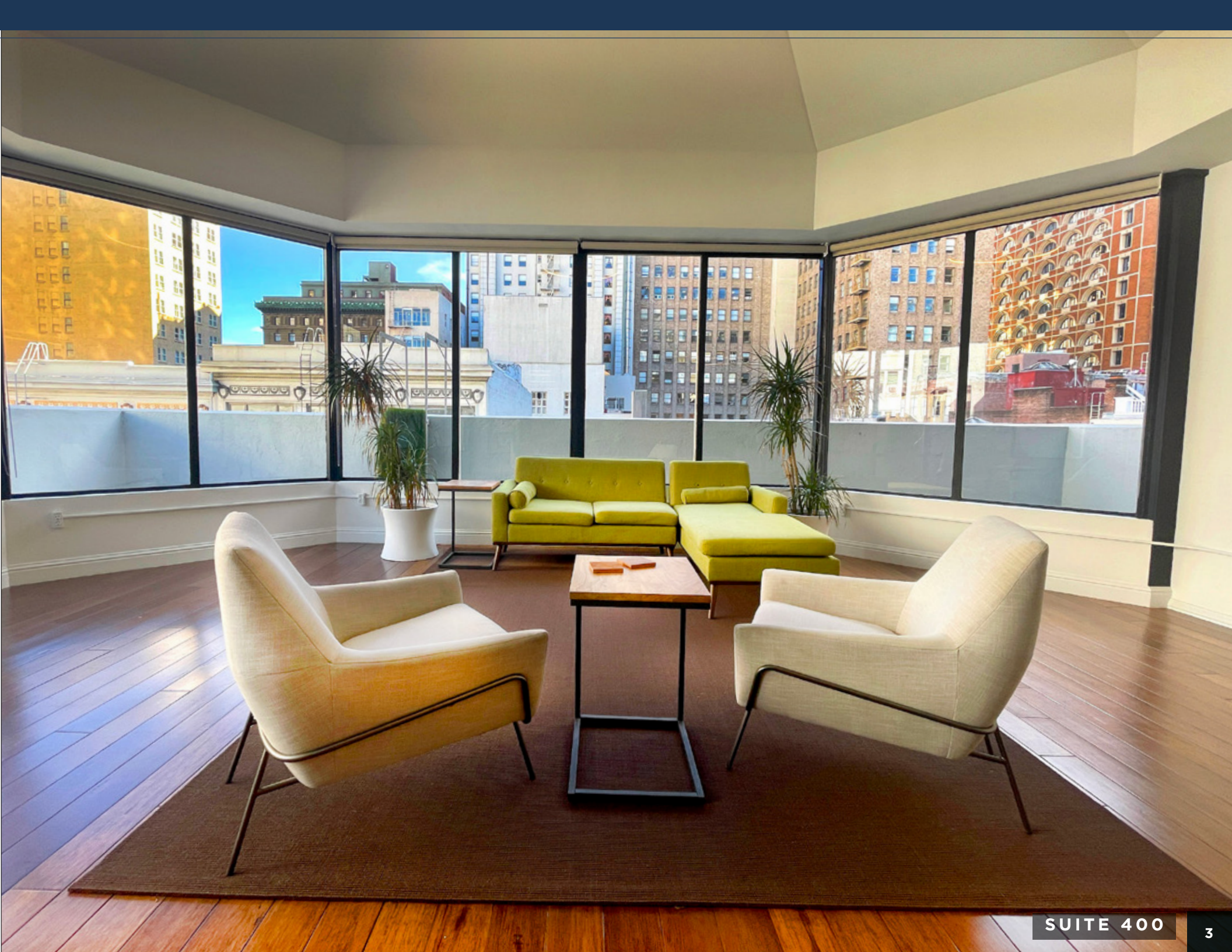
maven
RETAIL • OFFICE

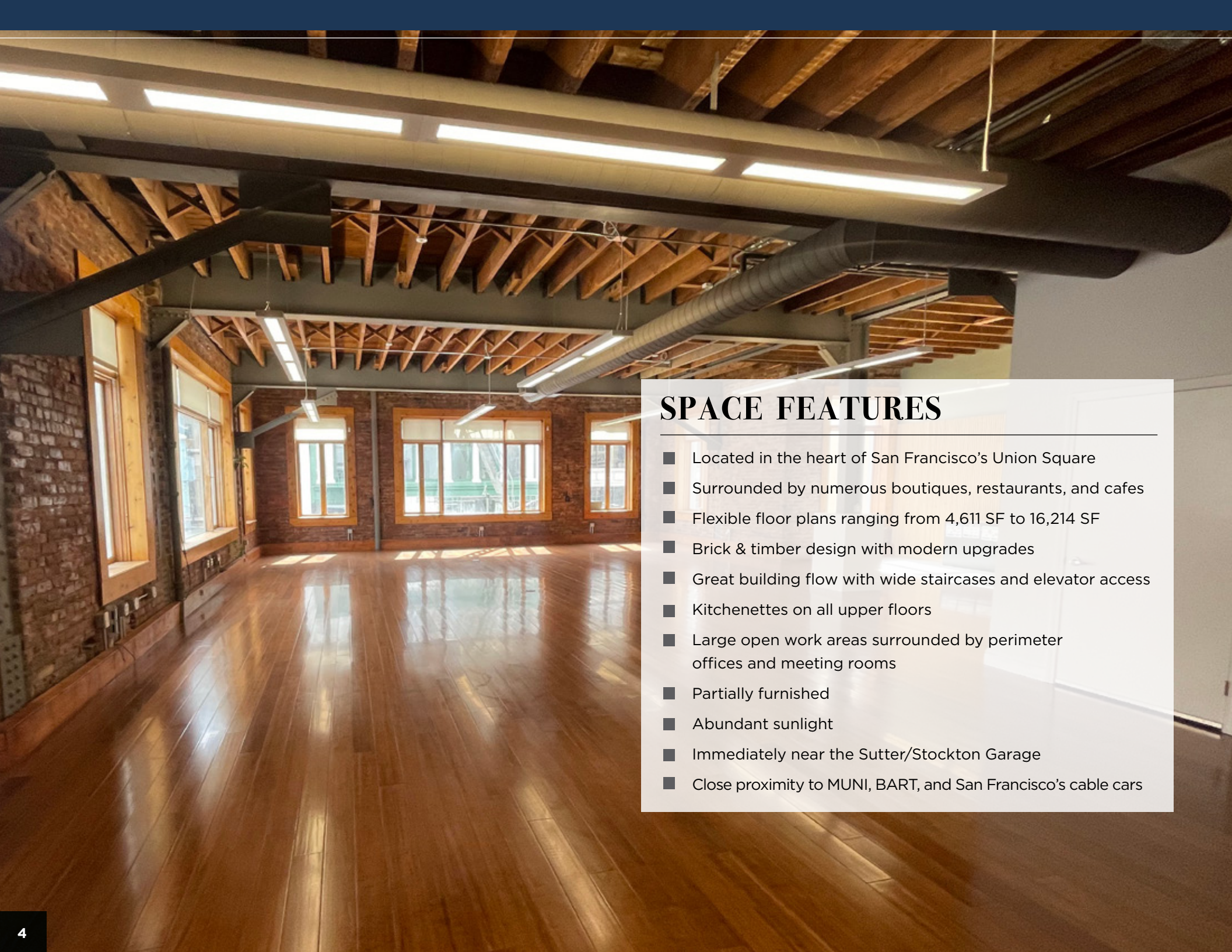


POTENTIAL HEADQUARTERS

556 - 560 Sutter Street offers an opportunity to lease full-floor office in one of San Francisco's most luxurious and highly-trafficked areas. Built in 1909 and recently renovated, the property features an elegant brick-and-timber feel with high ceilings, open work areas, perimeter meeting rooms, and abundant sunlight from three sides. All offices feature elevator access, views, updated kitchenettes, and big windows.

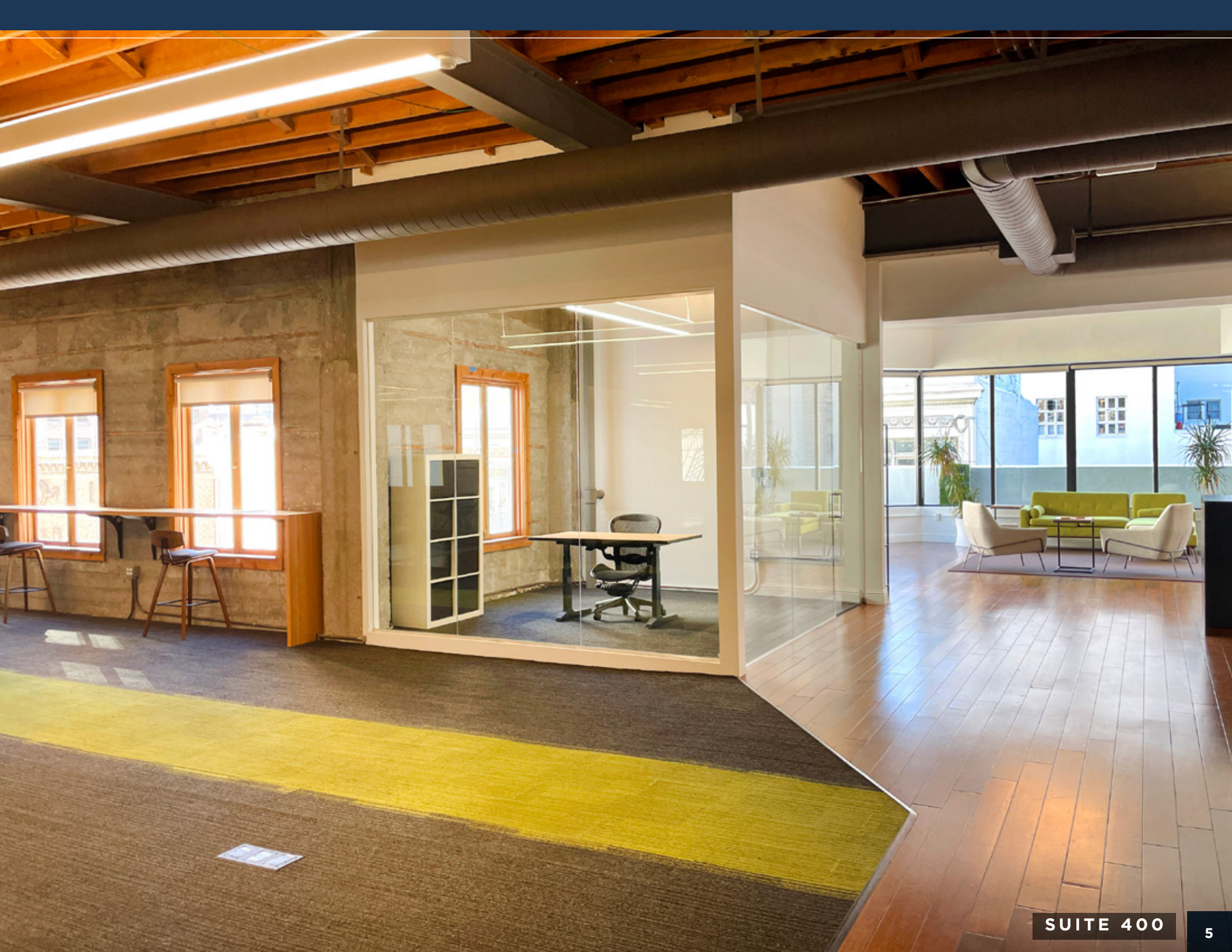
The property has been occupied in the past by Go Daddy, Razer, Brit + Co, Elizabeth Arden's Red Door Spa as well as Vickery, Atkins & Torrey, who designed interiors for some of the most renowned mansions, clubs and universities throughout San Francisco in the early 20th century. Excellent opportunity to lease a beautiful downtown office space or plant your headquarters in one of the most extravagant areas of San Francisco.





SPACE FEATURES

- Located in the heart of San Francisco's Union Square
- Surrounded by numerous boutiques, restaurants, and cafes
- Flexible floor plans ranging from 4,611 SF to 16,214 SF
- Brick & timber design with modern upgrades
- Great building flow with wide staircases and elevator access
- Kitchenettes on all upper floors
- Large open work areas surrounded by perimeter offices and meeting rooms
- Partially furnished
- Abundant sunlight
- Immediately near the Sutter/Stockton Garage
- Close proximity to MUNI, BART, and San Francisco's cable cars



URBAN CAMPUS OVERVIEW



PARTIALLY
FURNISHED



FULL BUILDING
HVAC



PCH BAR IN
BUILDING



TOP FLOOR
VIEWS



OPEN
COLLABORATION
AREAS



PERIMETER
OFFICES



KITCHENETTE



PRIVATE
PHONE
ROOMS



PARKING
CAR/BIKE
NEARBY



CONFERENCE
ROOMS



NATURAL
LIGHT



CLOSE TO
PUBLIC
TRANSPORTATION



SUITE 400





SUITE 300

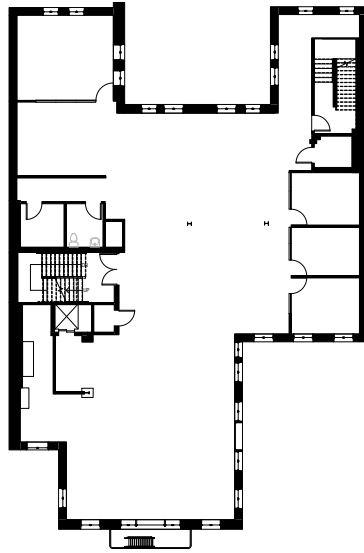


SUITE 400

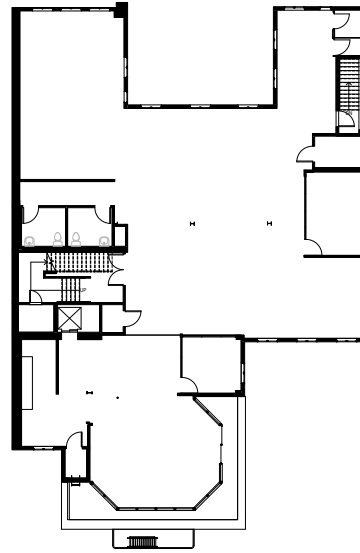


556 SUTTER

FLOOR PLANS



4,916 SF
SUITE 300



4,611 SF
SUITE 400

560 SUTTER

Ste 400 **4,611 SF**

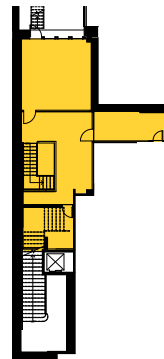
Ste 300 **4,916 SF**

556 SUTTER

Retail/Office **6,687 SF**



5,207 SF
GROUND



1,480 SF
MEZZANINE



STACKING PLANS

556, 560 SUTTER





UNION SQUARE

Union Square is a vibrant and bustling area of San Francisco that offers something for everyone, whether you're looking to shop, eat, or simply soak up the atmosphere of the city. In addition to some of the city's largest and most popular department stores, including Macy's, Saks Fifth Avenue, and Neiman Marcus, Union Square also features many luxury boutiques, hotels, and restaurants, making it a popular destination for both locals and tourists alike.

Union Square is also a transportation hub. Union Square is served by many Muni bus lines, including the 2, 3, 4, 8, 30, 45, and 91 lines, which connect the area to other parts of the city. In addition to buses, Union Square is also a major hub for San Francisco's iconic cable car lines and it sits in close proximity to BART. The Powell-Hyde and Powell-Mason cable car lines both stop at the intersection of Powell and Market Streets, just a few blocks from Union Square. These cable cars provide a fun and unique way to travel to other parts of the city.

WALK SCORE

100

TRANSIT SCORE

100



MASON STREET

EMBLEM
556 - 560 SUTTER

AKIKO'S SUSUBAR JAPANESE RESTAURANT
P


PANDORA
VICTORIA'S SECRET
WESTIN HOTELS & RESORTS

hotel nikko san francisco

BUSH STREET

Marriott P BOBA GUYS BLUESTONE LANE

SUTTER STREET
Saks Fifth Avenue TIFFANY & CO. WILLIAMS SONOMA Apple

POST STREET
Union Square


GEARY STREET
SWAROVSKI LOUIS VUITTON

O' FARRELL STREET

P E & O KITCHEN + BAR SAN FRANCISCO ALLEN EDMONDS

NIKE ZARA GUCCI Salvatore Ferragamo Kition HARRY WINSTON

STOCKTON STREET
BREITLING 1884 GRAFF BURBERRY FENDI Cartier
GUCCI ISAJA Maison Margiela

MAIDEN LANE
TORY BURCH SPECTACLES OF UNION SQUARE SUITSUPPLY Van Cleef & Arpels HERMES PARIS MONCLER LACOSTE CHANEL BOTTEGA VENETA VALENTINO

Neiman Marcus OMEGA DITA

Starbucks
The Bagel

RIMOWA ASHBURTON PLACE THE NORTH FACE SHREVE & Co.

GRANT STREET
Dior MaxMara GIORGIO ARMANI OLIVER PEOPLES

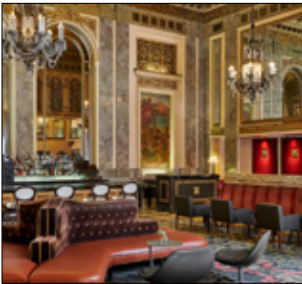
MONTBLANC Goyard BRUNELLO CUCINELLI D&G Paul Smith GOLDEN GOOSE / * VINCE. Acne Studios

SAINT LAURENT diptyque PARIS ONNE FONTOINE

KEARNY STREET

OUR NEIGHBORS

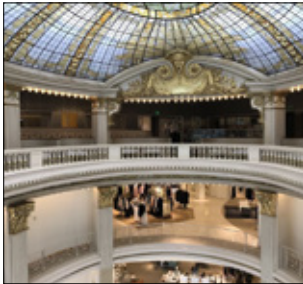
DOLCE & GABBANA



BEACON GRAND



BLUESTONE LANE



NEIMAN MARCUS

BOTTEGA VENETA



BOTTEGA VENETA



APPLE



ACNE STUDIOS

Neiman Marcus



Cartier

FENDI

SAINT LAURENT



EMBLEM HOTEL



NIKE



MONCLER

GUCCI

MONCLER

WESTIN
HOTELS & RESORTS

Maison Margiela

TIFFANY & CO.

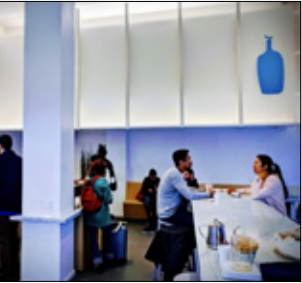
OMEGA



Philz Coffee



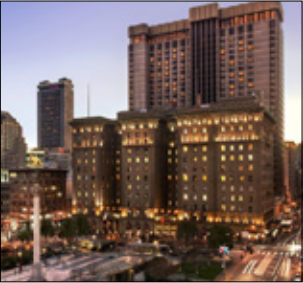
Peet's Coffee



BLUE BOTTLE



AKIKO'S SUSHI BAR



WESTIN ST. FRANCIS

556 - 560 SUTTER

SAN FRANCISCO | CA

4,611 SF - 16,214 SF

MULTI FLOOR AVAILABLE



DOMINIC MORBIDELLI
office 415.404.7314
dom@mavenproperties.com
DRE #02024348

SANTINO DEROSE
office 415.404.7337
sd@mavenproperties.com
DRE #01338326

PAMELA MENDELSON
office 415.404.6650
pam@mavenproperties.com
DRE #00953050

maven
RETAIL • OFFICE

NOTICE: This information has been secured from sources we believe to be reliable but we make no representations, warranties, express or implied, as to the accuracy of the information. Listing broker has been given enough information to provide only a preliminary interest in the property. The materials are not to be considered fact. The information contained herein is not a substitute for thorough due diligence investigation. References to square footage, zoning, use, or age are approximate. Please contact the San Francisco Planning Department to verify zoning at (415) 558-6378, as neither broker or landlord represent that this space is suitable for your use. Tenant or Buyer must verify the information at their own expense and bears all the risk for any inaccuracies. By receiving these materials you are agreeing to the disclaimers set forth herein. DRE#01878802