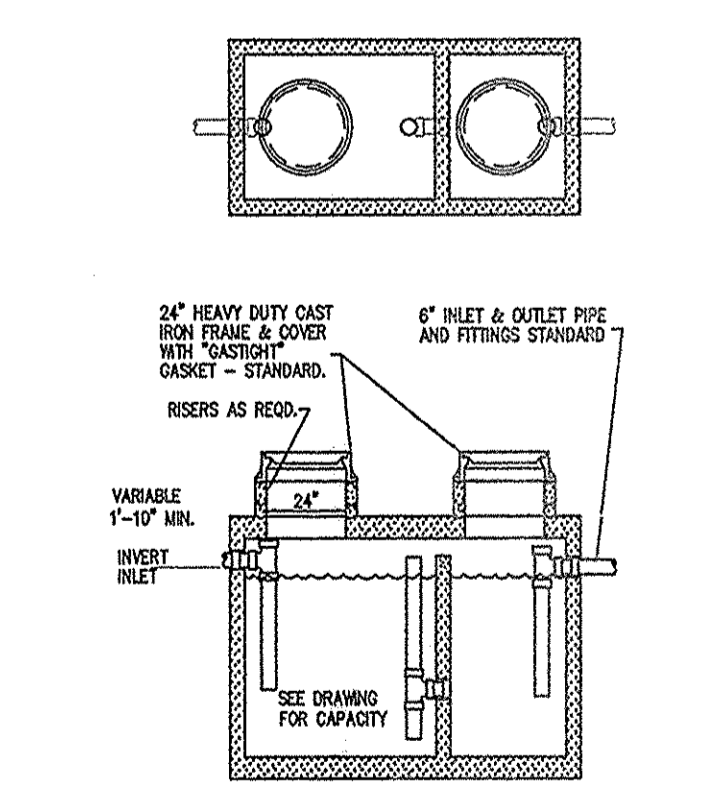


- PLUMBING NOTES:**
1. THE PRIMARY EVAPORATOR COIL CONDENSATE LINE SHALL BE TRAPPED AND ROUTED TO THE HOUSE SIDE OF THE LAVATORY P-TRAP BY MEANS OF A CONCEALED AND INSULATED 1-1/2" SCHEDULE 40 PVC LINE. SECONDARY CONDENSATE PIPING SHALL BE 1-1/4" AND STUBBED THRU THE FINISH CEILING 1" OVER THE LAVATORY WITH AN ESCUTCHEON. THE SECONDARY CONDENSATE PIPING NEED NOT BE INSULATED. SEE PLUMBING PLANS FOR DETAILS. THE MECHANICAL CONTRACTOR IS RESPONSIBLE FOR TRAPPING THE COOLING COIL CONDENSATE IMMEDIATELY ADJACENT TO THE COOLING COIL. THE PLUMBING CONTRACTOR SHALL PROVIDE A TRAPPED INDIRECT WASTE OPENING TO WITHIN 2 FEET OF ALL EQUIPMENT. THE PLUMBING CONTRACTOR SHALL ROUTE THE CONDENSATE LINE TO AN INDIRECT WASTE RECEIVER OR THE HOUSE SIDE OF AN ACTIVE TRAP.
 2. SEE ADDITIONAL GAS PIPING ROUTING AND DETAILS SHEET M1.
 3. SEE ADDITIONAL CONDENSATE ROUTING DETAILS SHEET M1 AND M2.
 4. SEE MECHANICAL AND PLUMBING SPECIFICATIONS SHEET MPI.
 5. BOTH RESTROOMS SHALL BE COMPLETELY PLUMBED BY THE LANDLORDS PLUMBING CONTRACTOR. ALL FLOOR DRAINS SHALL BE INSTALLED BY THE LANDLORDS CONTRACTOR AS WELL AS ALL WATER LINES TO KITCHEN EQUIPMENT. REFER TO TENANT IMPROVEMENT DRAWINGS (P1, P2 & P3) FOR EXACT LOCATIONS OF PLUMBING LINES.



1 P1 TYPICAL GREASE TRAP
 NOT TO SCALE

PLUMBING PLAN
 SCALE: 3/32" = 1'-0"

STARLITE SHOPS
 Owensboro, Kentucky
 A Development Of Starlite Shops, LLC.

H. MICHAEL HINDMAN
 ARCHITECTS, P.C.
 1607 WESTGATE CIRCLE SUITE 100 BRENTWOOD, TENNESSEE 37027
 PHONE 615/370-3252 EMAIL hindhman@hindmanarchitects.com

REVISIONS

1	PLAN CHANGE 2, 7/8/05
2	PLAN CHANGE 4, 12/12/05
3	PLAN CHANGE 6, 6/20/06

JOB NUMBER
 04065
 DRAWN BY
 SHD
 DATE
 MAR-21-2005
 DRAWING