

3400 RIVERSIDE DRIVE, BURBANK, CA  
WWW.STUDIOPLAZABURBANK.COM

**Douglas  
Emmett** +

Colliers

# STUDIO PLAZA

SPEC SUITES (6TH FLOOR)

# THE OPPORTUNITY

Douglas Emmett is proud to present Studio Plaza. The iconic ±456,205 RSF, 12-story + penthouse office campus is grounded in the vibrant culture of Burbank’s Media District — now offering **\$3.75/RSF promo pricing for spec suites on the 6th floor**. Located at the center of the entertainment world, adjacent to major production studios, Studio Plaza offers a rare vision of convenience and inspiration.

A photograph of the Studio Plaza building, a modern multi-story office campus with large glass windows and a stone facade. The building is surrounded by a landscaped courtyard with trees, a fountain, and outdoor seating. The text is overlaid on the left side of the image.

Douglas Emmett’s comprehensive, multi-million dollar interior and exterior renovations are now complete. Available for the first time in 30 years.



# THE DETAILS

**±456,205 RSF**  
Square Footage

**12 Stories**  
+ Penthouse

**13'4"**  
Ceiling Height

- Distinct campus design, including several outdoor pavilions
- 3/1,000 subterranean parking
- Common generator available for project tenants
- Exceptional freeway visibility and access
- Abundant EV charging stations
- On-site Equinox Fitness Club and Earthbar Café
- Within close proximity to an array of restaurants
- Located in the heart of the Burbank Media District



# AVAILABILITIES



[Click to View Floor Plans](#)

**NEW PROMO PRICING**

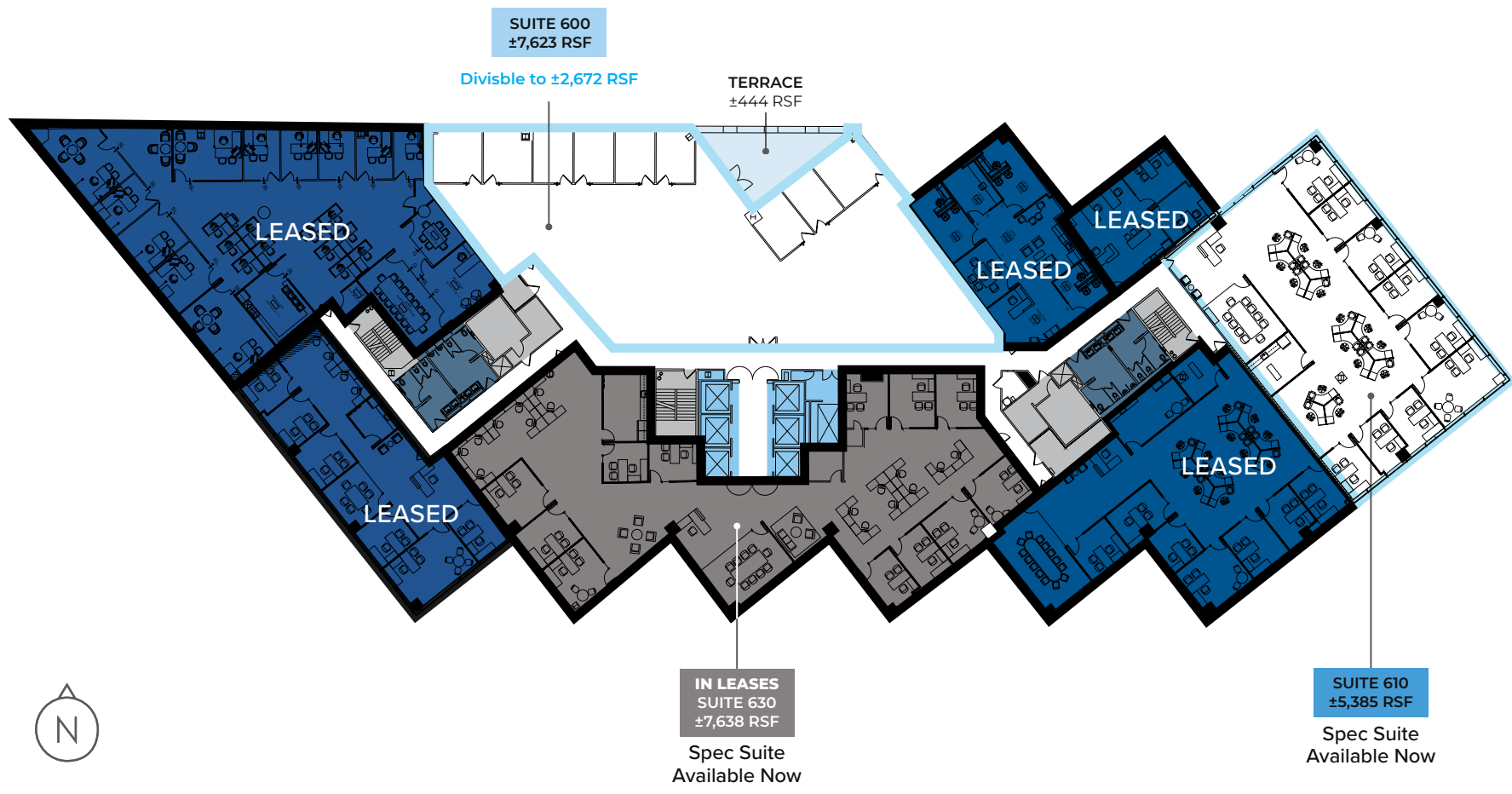
	Spec Suite	RSF	Rate	Comments
	Suite 600	±7,623 RSF	\$3.75/RSF	Spec Suite Coming Soon Divisible to ±2,672 RSF
	Suite 610	±5,385 RSF	\$3.75/RSF	Available Now, Move-In Ready 1 Conference Room, 9 Offices, 15 Workstations, Reception, Kitchen
	Suite 630	±7,638 RSF	\$3.75/RSF	Available Now, Move-In Ready 1 Conference Room, 12 Offices, 16 Workstations, Reception, Kitchen



# THE BLUEPRINT

- Terrace
- Elevator
- Restrooms
- Stairs & Utility

## FLOOR 6 As-Built



# THE BLUEPRINT

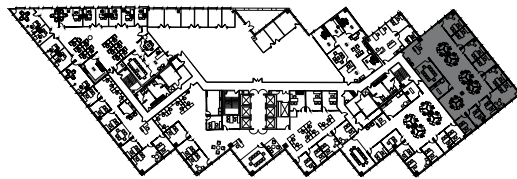
[Click below to explore more](#)

Spec Suite Available Now

**SUITE 610**  
**±5,385 RSF**

Rate: \$3.75/RSF

- 1 Conference Room
- 9 Offices
- 15 Workstations
- Reception
- Kitchen





[Click to View Availabilities](#)

# THE BLUEPRINT

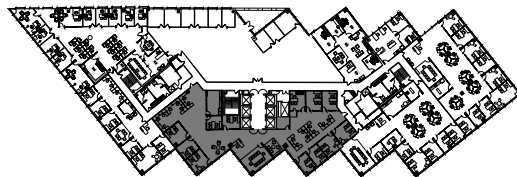
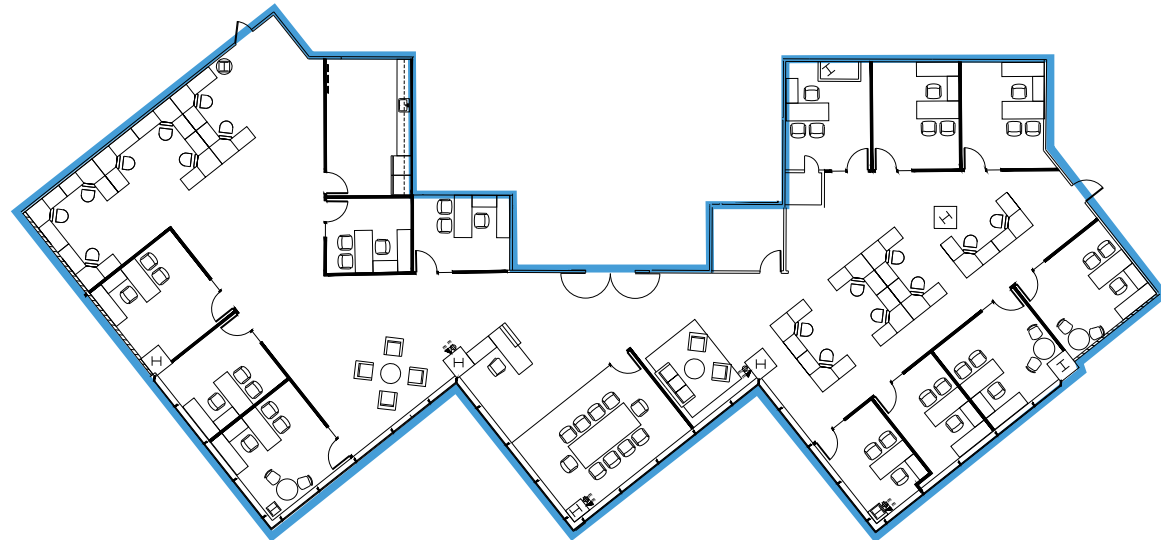
[Click below to explore more](#)

Spec Suite Available Now

**SUITE 630**  
**±7,638 RSF**

Rate: \$3.75/RSF

- 1 Conference Room
- 12 Offices
- 16 Workstations
- Reception
- Kitchen





# THE BLUEPRINT

Terrace

Hypothetical Spec Suite

**SUITE 600**  
**±7,623 RSF**

Rate: \$3.75/RSF

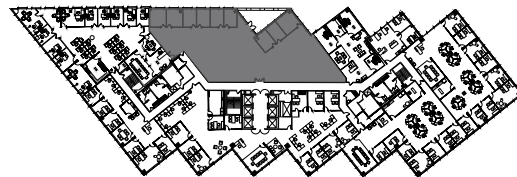
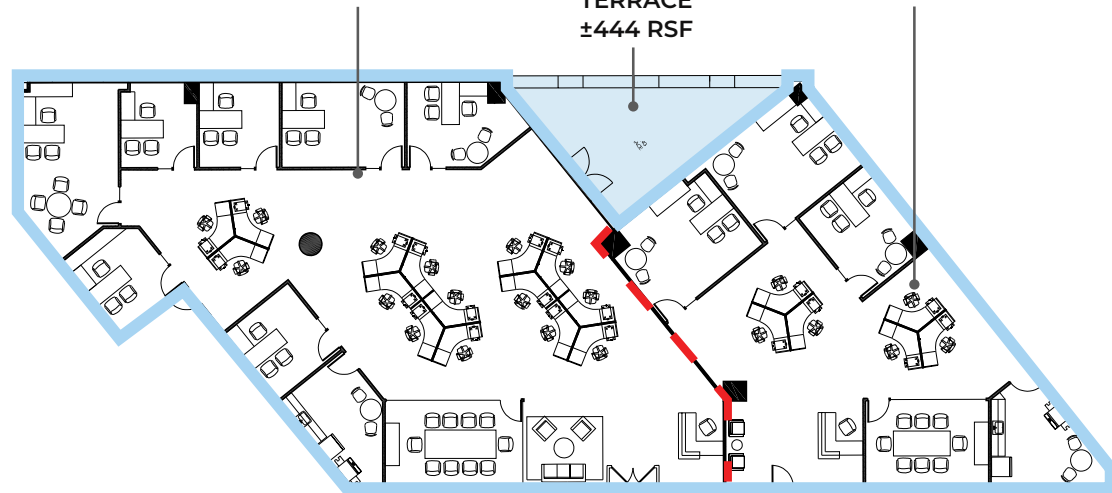
**SPEC SUITE 1**  
 1 CONFERENCE ROOM  
 7 OFFICES  
 15 WORKSTATIONS  
 RECEPTION  
 KITCHEN

**SPEC SUITE 2**  
 1 CONFERENCE ROOM  
 3 OFFICES  
 6 WORKSTATIONS  
 RECEPTION  
 KITCHEN

**SPEC SUITE 1**  
Divisible to ±4,951 RSF

**SPEC SUITE 2**  
Divisible to ±2,672 RSF

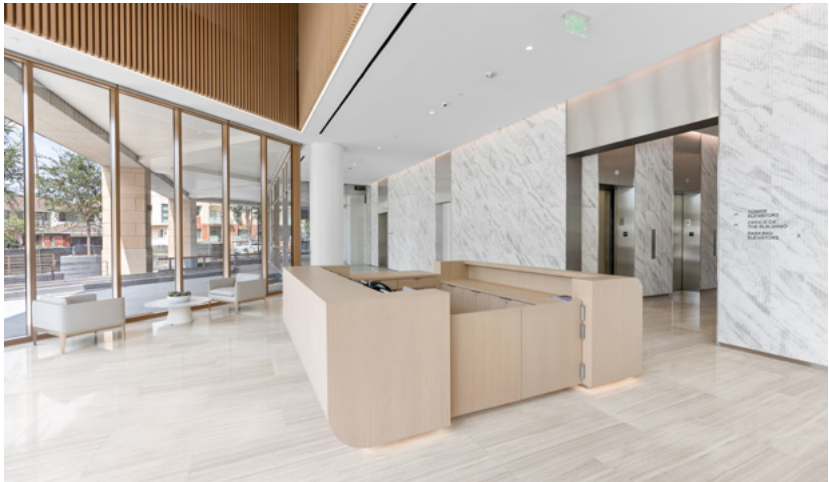
**TERRACE**  
±444 RSF



# THE CAMPUS

Studio Plaza's campus provides tenants and visitors with exclusive access to nearly half a million square feet of work and amenity spaces and the convenience of Douglas Emmett's unmatched service. The campus provides a rejuvenated environment for tenants — reimaged to inspire and invite.





# THE MODERN WORKPLACE

Embracing the modern workspace, Studio Plaza is a distinctively designed campus that offers multiple collaborative spaces, including several outdoor pavilions and terraces.

# THE TRANSFORMATION

Studio Plaza has been completely reimagined inside and out, with new landscaping elements, abundant patio seating, serene water fountains, and garden views, creating a modern oasis enhanced by a bright, welcoming lobby and stylish common areas.



# THE VENUE



# THE VICINITY

Since the 1940s, Burbank has been Los Angeles' thriving center of entertainment. The area is home to numerous major film and television studios, attracting filmmakers, artists, and professionals from all corners of the media world. The Burbank Media District offers a wide range of resources, such as state-of-the-art production facilities, post-production services, and soundstages.





# SURROUNDING AMENITIES

# DOUGLAS EMMETT DELIVERS

## **LEASING**

Our in-house leasing team is dedicated to meeting your office needs within our vast portfolio of Class-A office properties. We proudly offer the most extensive selection of premier office spaces for lease in the most coveted submarkets of Los Angeles and Honolulu.

## **SPACE PLANNING**

Our custom-tailored approach to space planning delivers design solutions that best meet your business' needs. Our in-house team of experts works closely with you throughout the interior design process to create innovative spaces that inspire creativity and productivity.

## **CONSTRUCTION**

Our in-house construction team is dedicated to creating exceptional workspaces in record time. Our skilled team manages the entire process, from acquiring permits to overseeing construction, to ensure that every project is of unmatched quality.

## **MANAGEMENT**

We place the highest value on providing exceptional customer service. Our management team is committed to ensuring that our tenants have a positive experience, from our friendly on-site security to the helpful and proactive property management staff. We strive to offer unparalleled service and support to all of our tenants.

## **STABILITY**

As a financially stable owner and operator for over 40 years, our strength is your advantage. We tailor solutions to your business' needs. From enabling hybrid solutions to supporting alternative work styles, we're continually evolving the workplace for the future, keeping your business on the cutting-edge of possibility.

## **SUSTAINABILITY**

Sustainability and corporate responsibility are at the forefront of our priorities. As a company, we are committed to minimizing our resource use by reducing energy consumption, increasing operational efficiency and diminishing our carbon footprint through our Green Recognized Office program (GRO).



# STUDIO PLAZA

3400 Riverside Drive, Burbank, CA  
[www.StudioPlazaBurbank.com](http://www.StudioPlazaBurbank.com)

Leasing Team

## Integrated Advisory Services Team

**Matthew Heyn**

License No. 01306148  
+1 818 334 1860  
[matt.heyne@colliers.com](mailto:matt.heyne@colliers.com)

**Caitlin Hoffman**

License No. 01935762  
+1 818 334 1850  
[caitlin.hoffman@colliers.com](mailto:caitlin.hoffman@colliers.com)

**Anneke Greco**

License No. 01390030  
+1 818 334 1865  
[anneke.greco@colliers.com](mailto:anneke.greco@colliers.com)

**Gil Canton**

License No. 01279519  
+1 818 233 1856  
[gil.canton@colliers.com](mailto:gil.canton@colliers.com)



This document/email has been prepared by Colliers for advertising and general information only. Colliers makes no guarantees, representations or warranties of any kind, expressed or implied, regarding the information including, but not limited to, warranties of content, accuracy and reliability. Any interested party should undertake their own inquiries as to the accuracy of the information. Colliers excludes unequivocally all inferred or implied terms, conditions and warranties arising out of this document and excludes all liability for loss and damages arising there from. This publication is the copyrighted property of Colliers and /or its licensor(s). © 2026. All rights reserved. This communication is not intended to cause or induce breach of an existing listing agreement Colliers International Greater Los Angeles, Inc.