

Raymond N. Herb, Jr.  
Michael L. Myer  
Susan M. Herb  
Kathleen M. Herb  
Jeffrey A. Carpenter



Realtors / Since 1927  
(717) 272-5637

**FOR SALE in Lebanon County . . . . .**  
**1151 Cornwall Road, SUITE #4, Lebanon, PA 17042**



- ◆ *1,664 Square Feet*
- ◆ *Frame Construction*
- ◆ *Ample Bath Facilities*
- ◆ *Standard Electric Svc.*
- ◆ *Public Water & Sewer*
- ◆ *Dental/Medical/Professional*
- ◆ *Zoned RLD - Res. Low Density*
- ◆ *Gas Warm Air Heat w/AC*
- ◆ *Ideal Investment Property*
- ◆ *7/1/2023 R.E. Taxes \$6,491/YR*

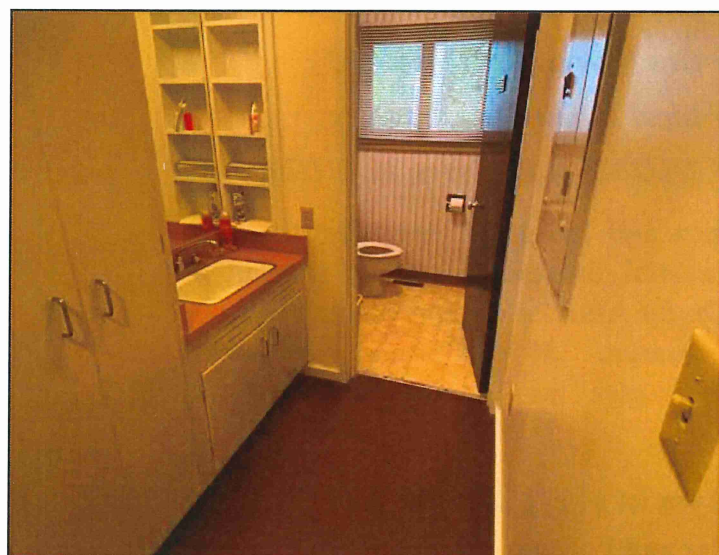
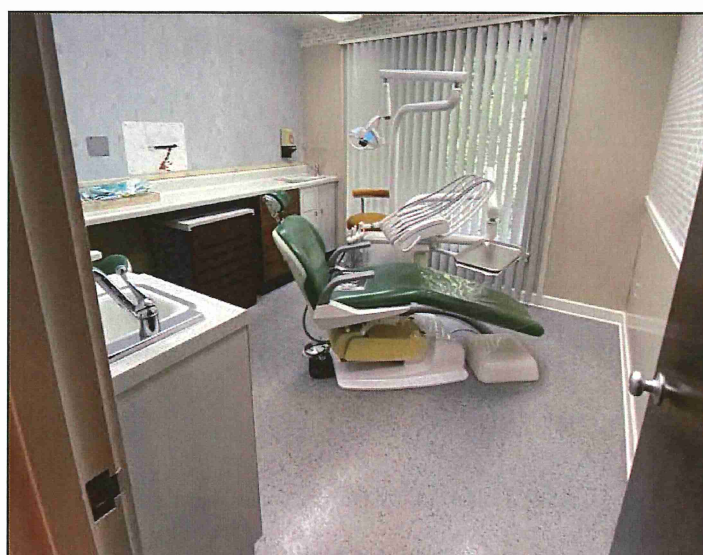
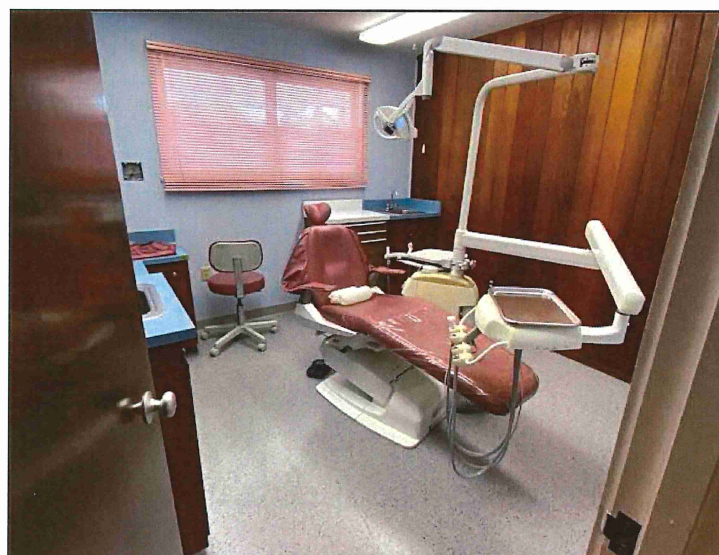
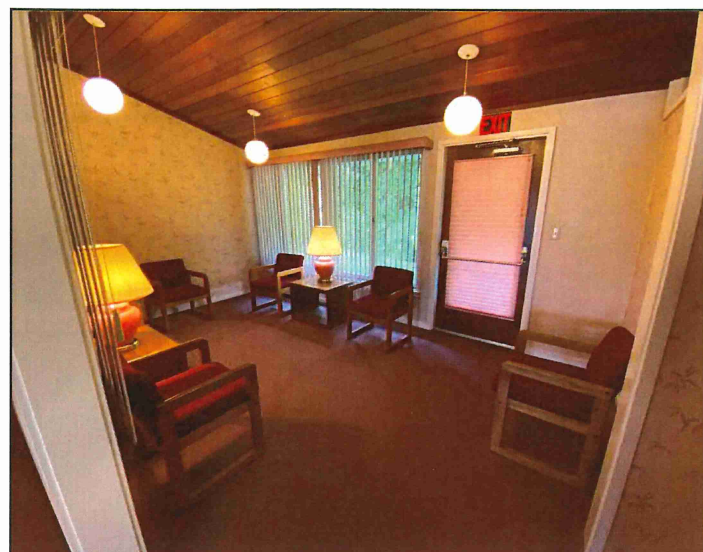
This property is located in the City of Lebanon and has great street frontage. It consists of professional office space with partial finished basement previously occupied by a dentist. Property is part of Condo Association and buyer requires Condo Association approval. Parking in common. If you would like more information or schedule a showing, please give us a call or email at [info@gellerrealestatecompany.com](mailto:info@gellerrealestatecompany.com).

**Call Ray Herb, Jr. or Mike Myer at (717) 272-5637**  
**Commercial/Industrial Sales and Leasing**

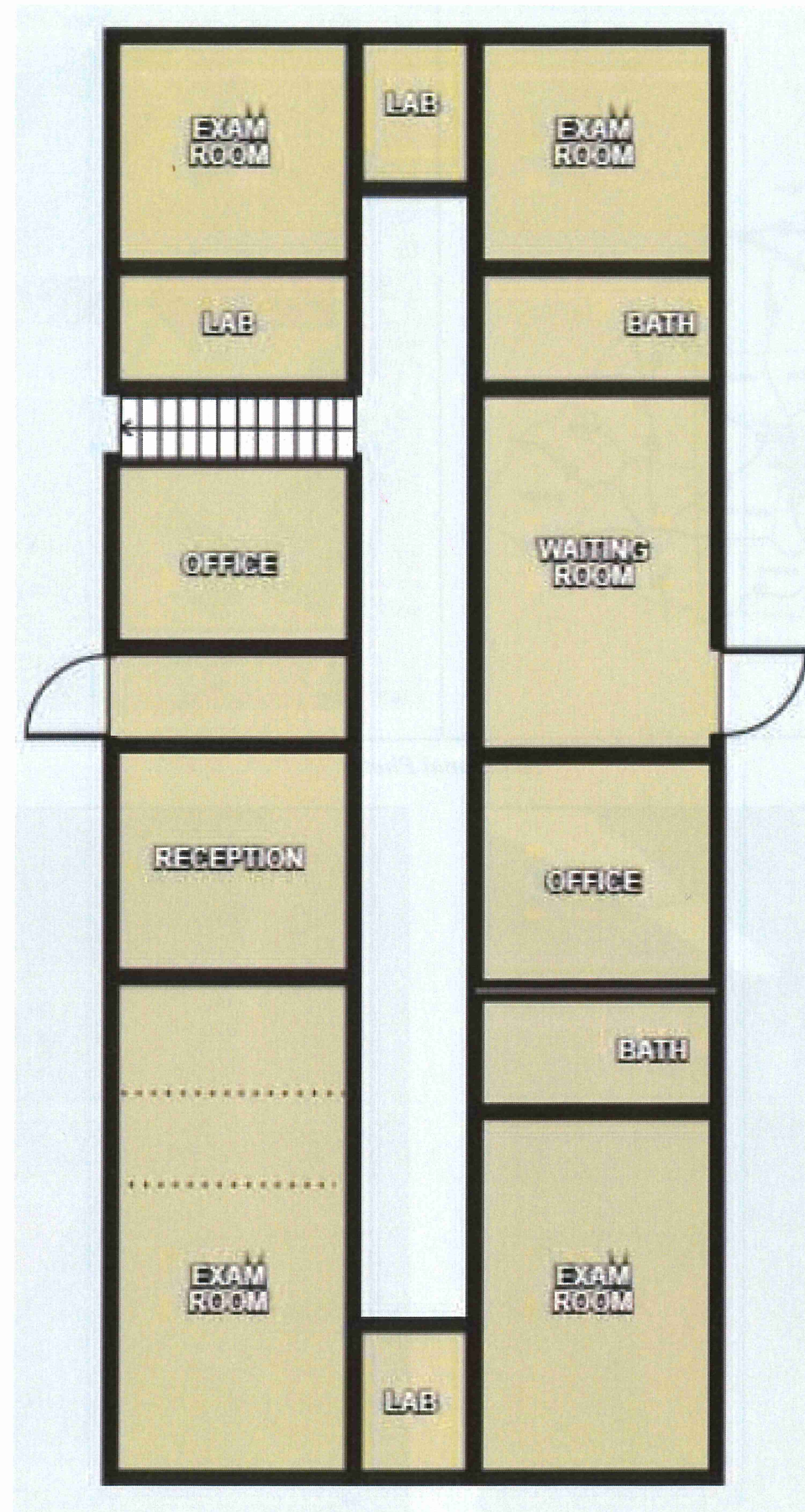
---

**Mailing Address: 749 E. Cumberland Street, Lebanon, PA 17042**

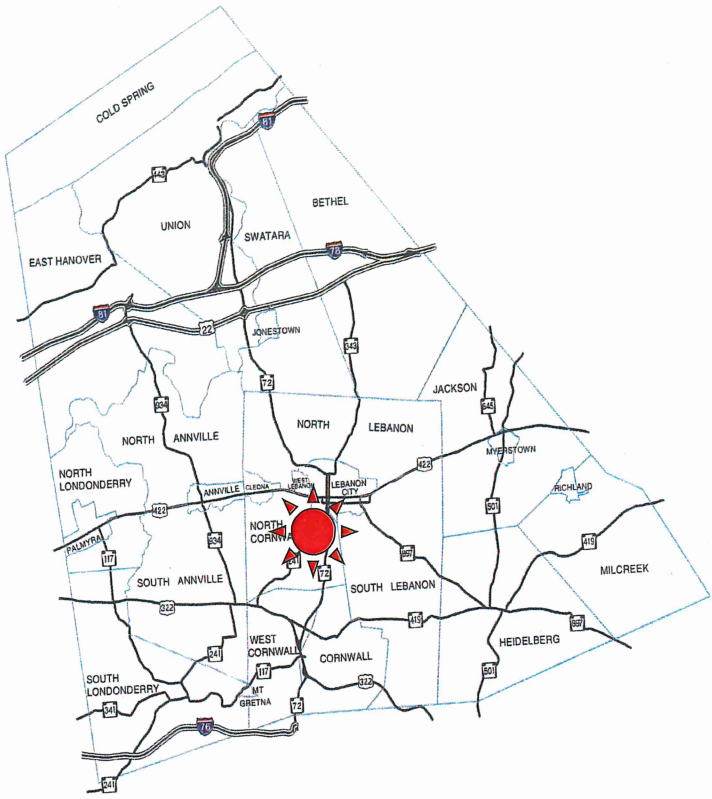
Photos



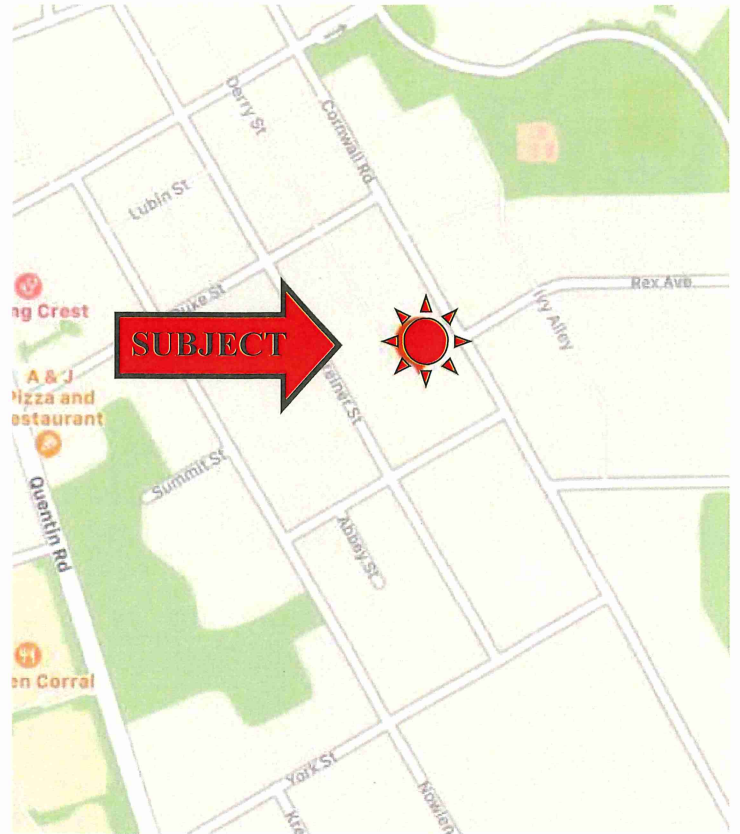
Floor Plan



## COUNTY MAP



## LOCATION MAP



## *Additional Photos*

