

FOR SALE

4.88 AC REDEVELOPMENT SITE

1909 Commerce Drive | Hampton, VA 23666



S.L. NUSBAUM
REALTY CO.



EMMA WILL

Associate

C. 804.821.9042

O. 804.508.7283

ewill@slnusbaum.com

NATHAN SHOR

Senior Vice President | Partner

C. 804.539.7404

O. 804.944.2399

nshor@slnusbaum.com

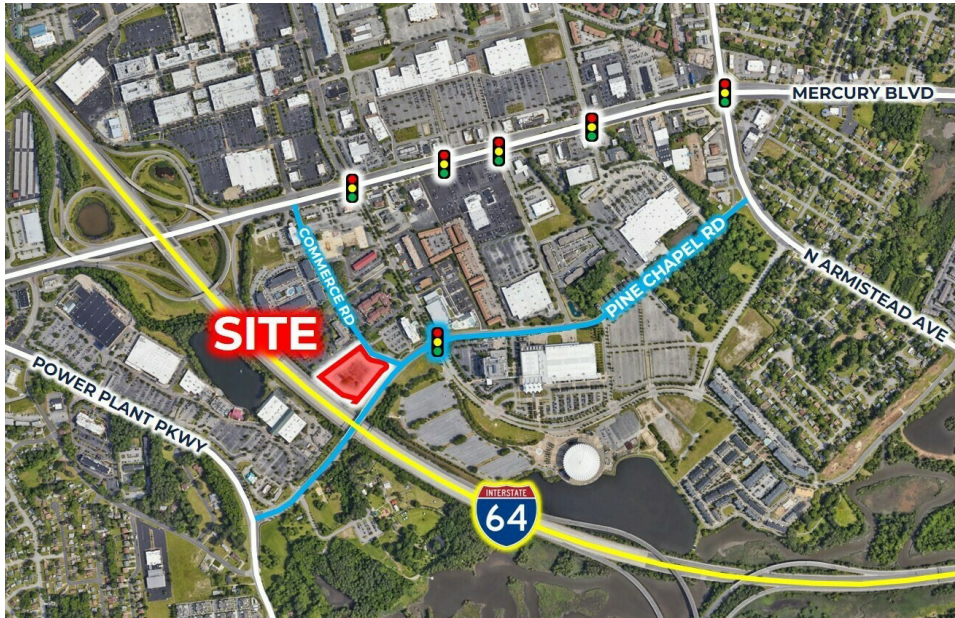
PROPERTY SUMMARY

4.88 AC REDEVELOPMENT SITE

1909 Commerce Drive | Hampton, VA 23666



S.L. NUSBAUM
REALTY CO.



OFFERING SUMMARY

Sale Price:	\$9,359,000
Lot Size:	4.88 Acres
Zoning:	MD-4

[Click Here - Drone Photos](#)

[Click Here - Coliseum Central Master Plan](#)

[Click Here - Civilian Labor Force Profile](#)

DEMOGRAPHICS	1 MILE	3 MILES	5 MILES
Total Population	10,355	87,542	193,756
Daytime Population	15,373	103,551	216,607
Total Households	5,301	38,843	82,800
Average HH Income	\$75,206	\$82,393	\$83,462

PROPERTY OVERVIEW

Located along Commerce Drive with excellent access to I-64 and Mercury Boulevard, this 4.88 AC redevelopment site offers a compelling multifamily development opportunity in the heart of Hampton Roads. Zoned MD-4, the site allows multifamily by-right and is entitled for up to 382 units, positioning it as an ideal play for developers seeking scale in a high-demand submarket.

PROPERTY HIGHLIGHTS

- Well located site in Hampton Roads, offering proximity to major employment centers and daily amenities
- Close proximity to the Hampton Coliseum, Hampton Roads Convention Center, Peninsula Town Center, Coliseum Marketplace and more
- Strong workforce and renter base driven by nearby military, aerospace, healthcare, and port-related employers
- Site is located within the Coliseum Central District

CONCEPT PLAN & RENDERING

4.88 AC REDEVELOPMENT SITE

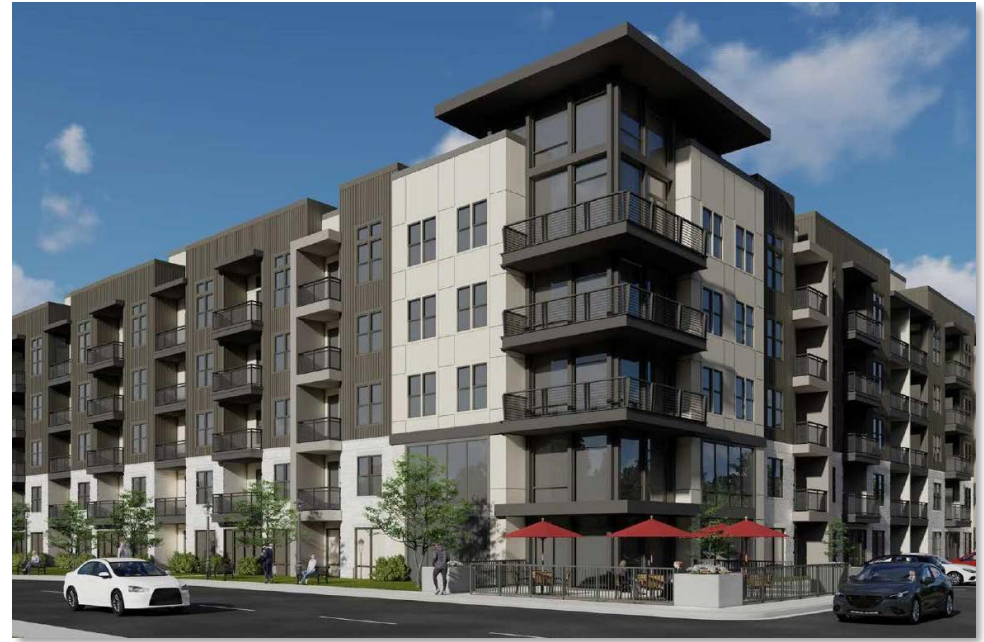
1909 Commerce Drive | Hampton, VA 23666



S.L. NUSBAUM
REALTY CO.



Concept Plan



Rendering

[CLICK HERE FOR LINK TO CITY COUNCIL PRESENTATION](#)

AERIALS

4.88 AC REDEVELOPMENT SITE

1909 Commerce Drive | Hampton, VA 23666



S.L. NUSBAUM
REALTY CO.



CONTACT INFORMATION

4.88 AC REDEVELOPMENT SITE

1909 Commerce Drive | Hampton, VA 23666



S.L. NUSBAUM

REALTY CO.



EMMA WILL

Associate
C. 804.821.9042
O. 804.508.7283
ewill@slnusbaum.com

NATHAN SHOR

Senior Vice President | Partner
C. 804.539.7404
O. 804.944.2399
nshor@slnusbaum.com

COMMITMENT. INTEGRITY. EXCELLENCE. SINCE 1906.

Serving the Southeast and Mid-Atlantic region for well over a century, S.L. Nusbaum Realty Co. continues to provide a comprehensive experience for our clients and customers in all aspects of the multifamily and commercial real estate industry.

[CLICK HERE TO LEARN MORE](#)

DISCLAIMER:

No warranty or representation, expressed or implied, is made to the accuracy or completeness of the information contained herein, and same is submitted subject to errors, omissions, change of price, rental or other conditions, withdrawal without notice, and to any special listing conditions imposed by the property owner(s). As applicable, we make no representation as to the condition of the property (or properties) in question or the property's (or properties') compliance with applicable laws, regulations, and codes.