



**SterlingCRE**  
A D V I S O R S

## Manufacturing Warehouse Facility | For Lease

8129 Cowboy Trail  
Missoula, Montana 59802  
\$14.00/SF + NNN | 38,617 SF

Contact:  
Matt Mellott, CCIM | SIOR  
Matt@SterlingCREadvisors.com

Chris Bristol  
Chris.Bristol@SterlingCREadvisors.com



# Opportunity Overview

SterlingCRE Advisors is proud to present 8129 Cowboy Trail, a rare manufacturing center in Missoula, Montana.

This ±38,617 square foot warehouse/manufacturing facility is available for lease, situated on ±7.00 acres in Missoula, Montana. The pre-engineered steel building was constructed in 2014 with 43' clear height featuring 3-phase power (2000A 480Y/277V), (2) 30' x 30' rolling doors and two (2) 20' x 20' rolling doors. It includes (4) 30-ton cranes and (2) 15-ton hoists. Equipped with ±3,300 square feet of finished office space, this property offers a unique opportunity for a warehousing and manufacturing tenant within Missoula County.

Industrial Center Heavy Zoning classification is rare in Missoula County. With close proximity to Interstate 90 and Highway 200, the facility provides direct access to transportation nodes for distribution and logistics uses.



<b>Address</b>	8129 Cowboy Trail, Missoula, Montana
<b>Property Type</b>	Industrial Warehouse
<b>List Rate</b>	\$14.00/SF plus NNN
<b>Estimated NNN</b>	\$3.48/SF
<b>Total Square Feet</b>	±38,617 Square Feet
<b>Total Acreage</b>	±7.00 Acres



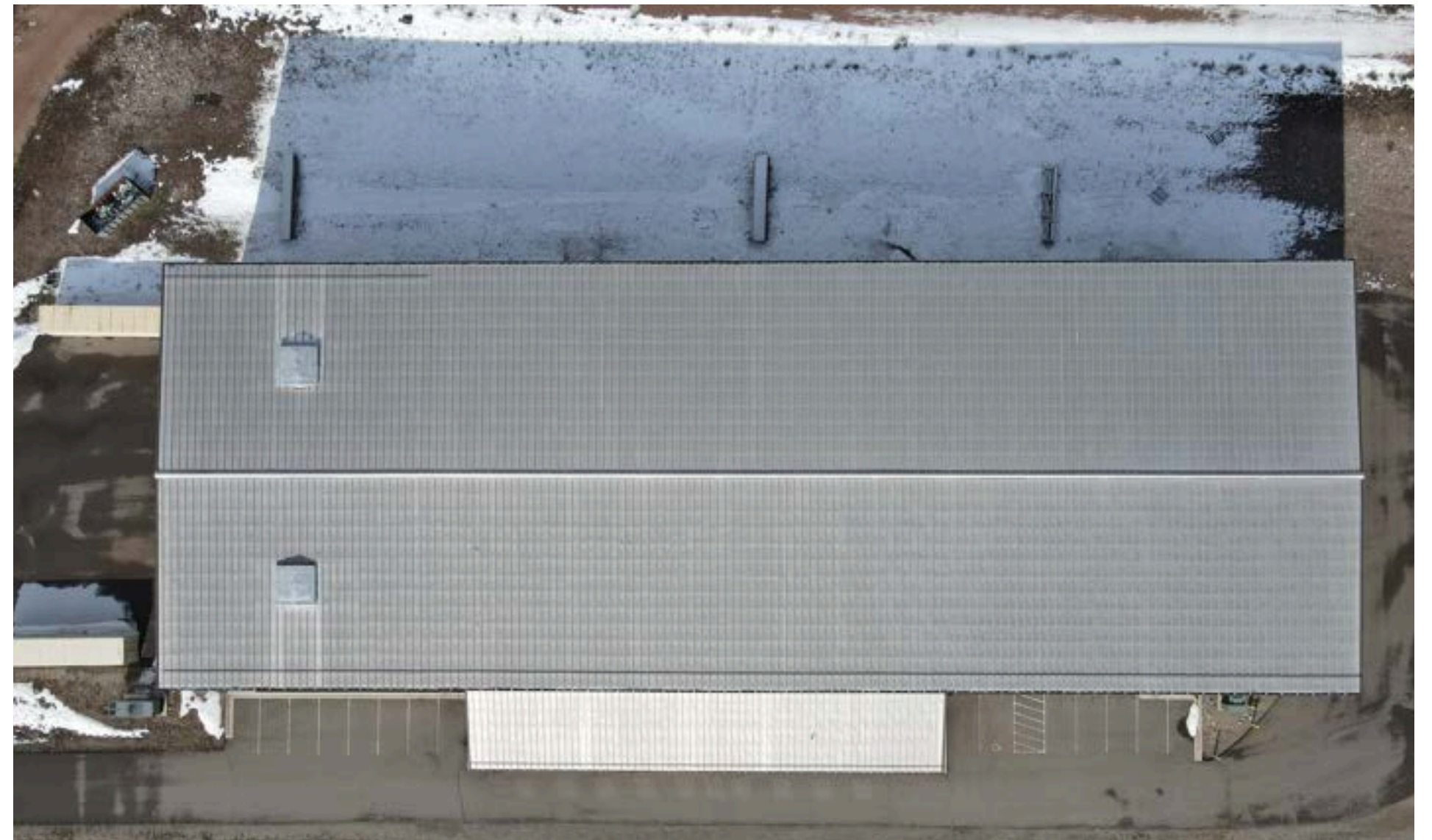
# Interactive Links



[Link to Listing](#)



[Street View](#)





# Property Details

<b>Address</b>	8129 Cowboy Trail
<b>Property Type</b>	Industrial Warehouse
<b>Total Acreage</b>	±7.00 acres
<b>Services</b>	Private well and septic system
<b>Access</b>	Highway 200
<b>Zoning</b>	Missoula County - Industrial Center, Heavy (ICH)
<b>Geocode</b>	04-2201-21-1-01-10-0000
<b>Power Capacity</b>	3-Phase (2000A 480Y/277V)
<b>Clear Height</b>	43'
<b>Year Built</b>	2014
<b>Loading</b>	(2) 30' x 30' rolling grade level doors and (2) 20' x 20' rolling grade level doors

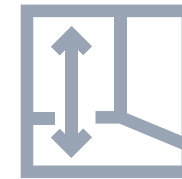




# Opportunity Highlights



**Less than 1 mile to Interstate 90 and Highway 200**



**Clear height up to 43'**



**3 Phase Power (2000A 480Y/277V)**



**4 x 30-Ton Cranes with 2 x 15-Ton Hoists**



**Excess land for storage, parking or laydown**



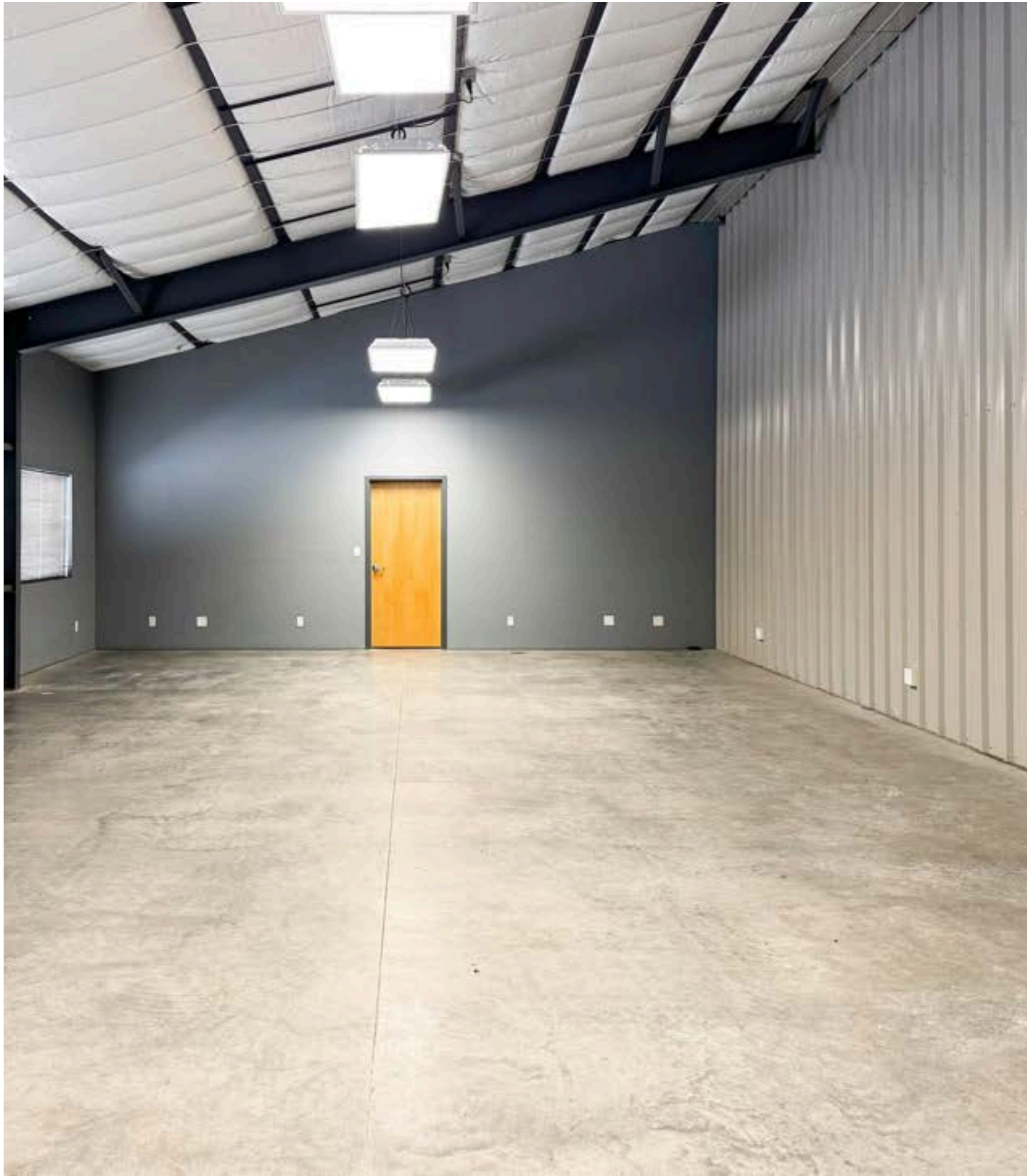
**12" Fire suppression well with Chamberlin 75HP FPS Submersible Turbine Pump tested to 1500gpm w/ fire hydrant**



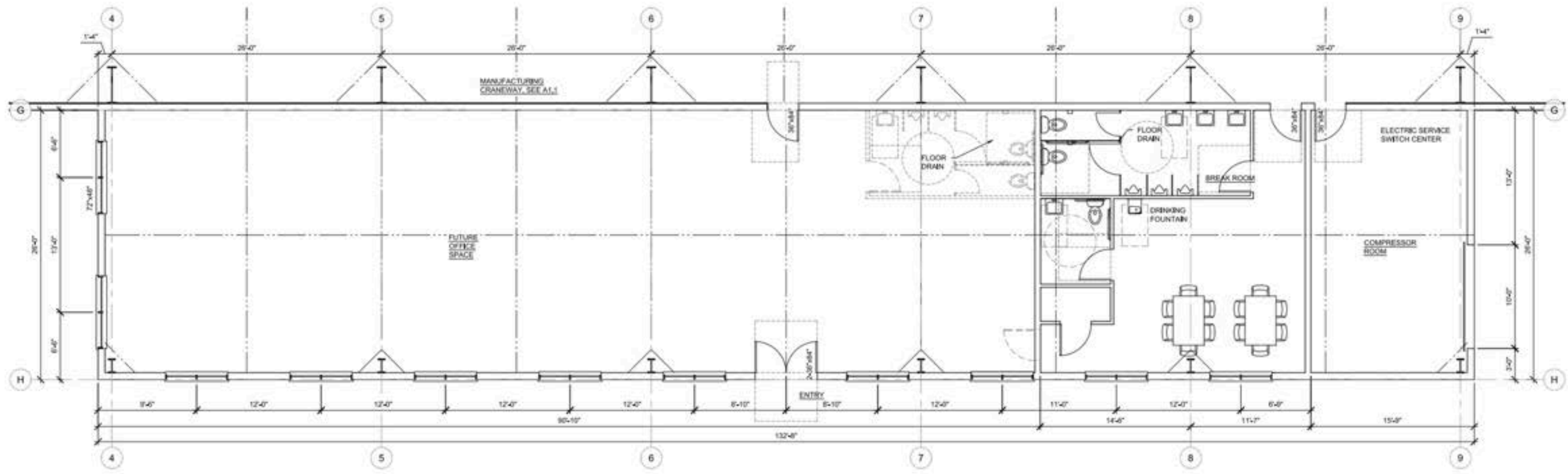


Locator Map





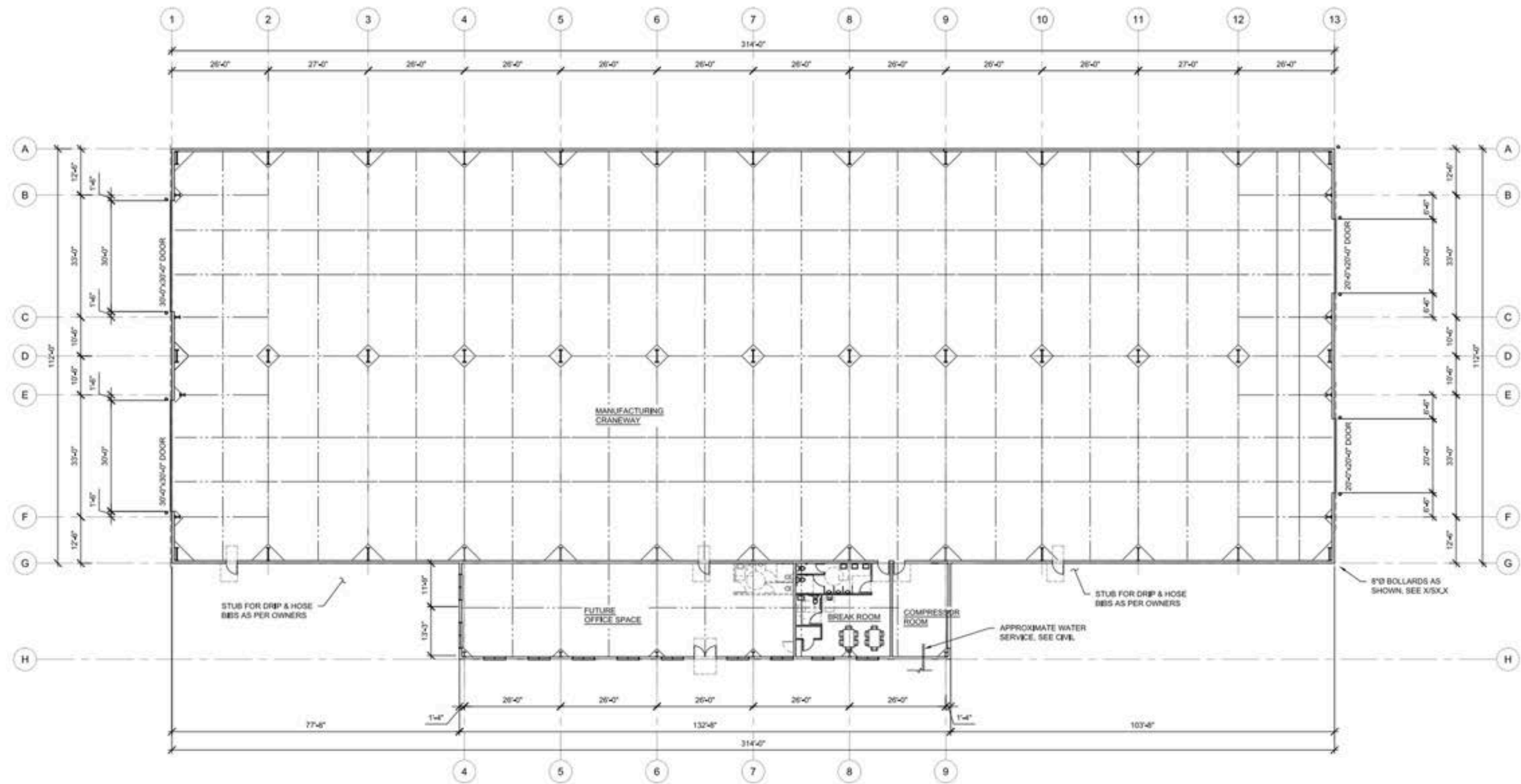




ENLARGED MAIN LEVEL FLOOR PLAN  
SCALE: 3/8"=1'-0"

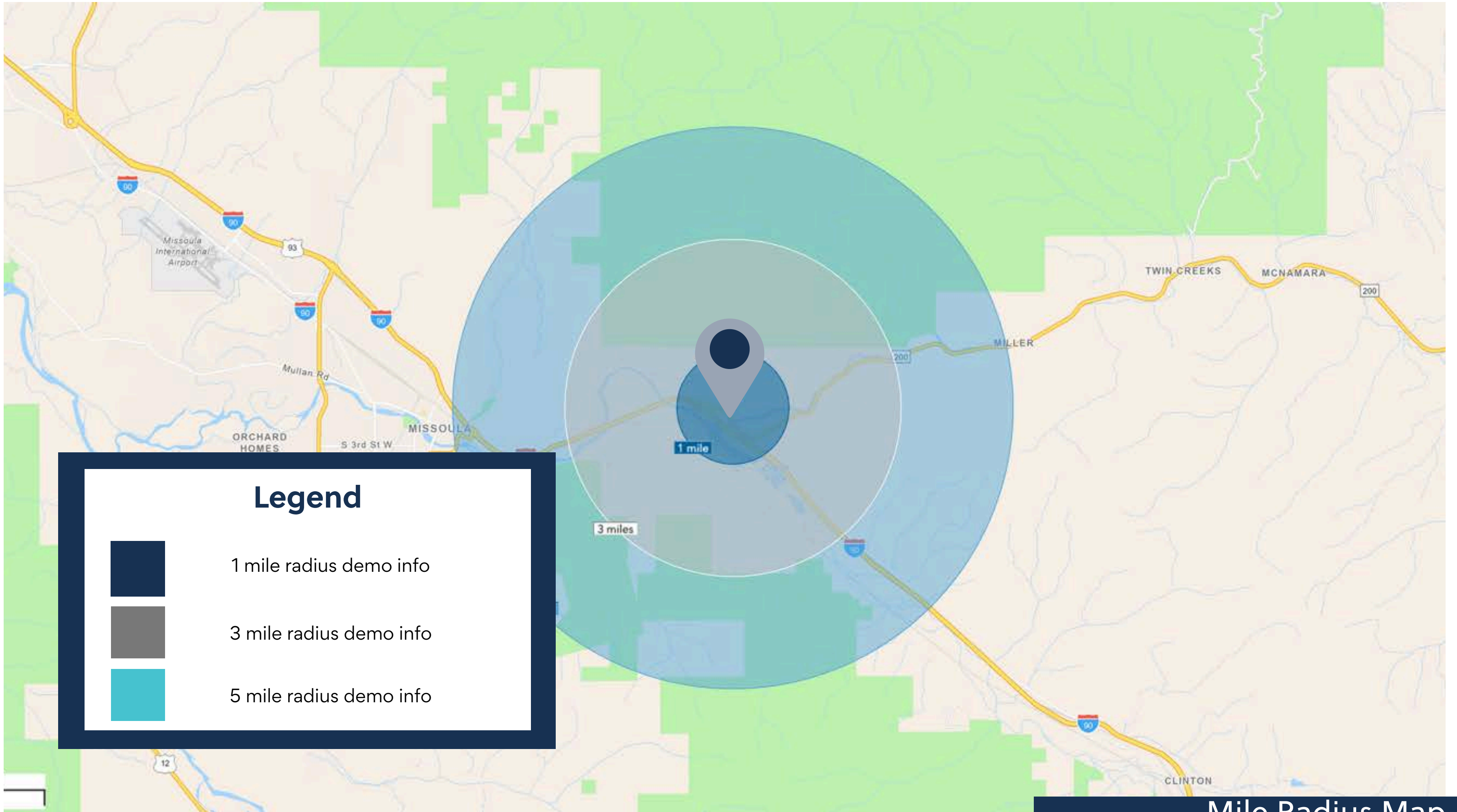






MAIN LEVEL FLOOR PLAN  
 SCALE: 1/8" = 1'-0"





## Legend



1 mile radius demo info



3 mile radius demo info



5 mile radius demo info



## KEY FACTS

5 miles

14,170

Population



38.4

Median Age



2.4

Average Household Size

\$67,326

Median Household Income

3,522

2023 Owner Occupied Housing Units (Esri)

2,082

2023 Renter Occupied Housing Units (Esri)

## BUSINESS

5 miles



391

Total Businesses



4,933

Total Employees

## HOUSING STATS

5 miles



\$412,884

Median Home Value



\$13,128

Average Spent on Mortgage & Basics



\$873

Median Contract Rent

### 2023 Households by income (Esri)

5 miles

The largest group: \$50,000 - \$74,999 (16.5%)

The smallest group: \$150,000 - \$199,999 (6.5%)

Indicator ▲	Value	Diff
<\$15,000	11.2%	+1.6%
\$15,000 - \$24,999	8.6%	+1.3%
\$25,000 - \$34,999	8.0%	-0.7%
\$35,000 - \$49,999	9.7%	-2.8%
\$50,000 - \$74,999	16.5%	-0.1%
\$75,000 - \$99,999	13.4%	+0.4%
\$100,000 - \$149,999	12.6%	-2.1%
\$150,000 - \$199,999	6.5%	-0.9%
\$200,000+	13.6%	+3.3%

Bars show deviation from

Variables	1 mile	3 miles	5 miles	Variables	1 mile	3 miles	5 miles
2022 Total Population	1,438	4,601	14,170	2022 Per Capita Income	\$26,411	\$35,169	\$44,101
2022 Household Population	1,438	4,577	13,170	2022 Median Household Income	\$50,953	\$59,037	\$67,326
2022 Family Population	1,093	3,371	8,966	2022 Average Household Income	\$64,573	\$82,267	\$108,721
2027 Total Population	1,465	4,702	14,343	2027 Per Capita Income	\$31,113	\$41,964	\$52,187
2027 Household Population	1,465	4,678	13,343	2027 Median Household Income	\$56,242	\$67,304	\$80,615
2027 Family Population	1,107	3,424	9,024	2027 Average Household Income	\$75,913	\$97,982	\$128,322



## #1 Most Fun City for Young People

Smart Assets

## #2 Best Places to Live in the American West

Sunset Magazine

## Top 10 Medium Cities for the Arts

2023 Southern Methodist University

## #4 Best Small Cities in America to Start a Business

Verizon Wireless

## #10 Best Small Metros to Launch a Business

CNN Money

## #6 Best Cities for Fishing

Rent.com

## #1 City for Yoga

Apartment Guide

## Top 10 Cities for Beer Drinkers

2015, 2016, 2017, 2019, 2022

## International Public Library of 2022

The International Federation of Library Associations World Congress

## 12.5% Population Growth - 2012-2022

Missoula ranks among highest net migration cities in US

## Median Age 34 Years Old

The median age in the US is 39

## 58.8% Degreed

Associates degree or higher, 18.7% have a graduate level degree

## 24.7% High Income Households

Incomes over \$100,000 a year

## 53.4% Renters

## Top 5 Occupations

Office & Admin Support, Food Service, Sales, Transportation



# ACCESS

## **16 Minutes**

Average Commute Time

## **15.6% Multimodal Commuters**

Walk or bike to work

## **81 Hours Saved**

81 hours saved in commute yearly over national average

## **14 Non-Stop Air Destinations**

With a recently upgraded terminal at the Missoula International Airport

## **62 Miles**

Of bike lanes with a Gold rating from the League of American Bicyclists

## **12 Routes**

Provided by a bus network across the City of Missoula

## **11 EV Charge Stations**

Available to the public across Missoula

# ECONOMY

## **Designated as a Tech Hub**

Western Montana was one of 30 applicants out of 200 designated as a Tech Hub by the federal government and now eligible for millions of dollars in funding for research in smart, autonomous and remote sensing technologies.

## **Diversity Among Top Employers**

University of Montana (education), Providence Health Services/St. Patrick's Hospital (medical), Community Medical Center (medical), Montana Rail Link (transportation), Neptune Aviation (aviation services)

## **High Labor Participation**

Missoula consistently offers one of the highest labor force participation rates in the country.

## **Expanding Industries**

Missoula has seen major growth in construction, professional, scientific, and manufacturing businesses over the past decade.

## **Growing Number of Technology Companies**

Cognizant, onX, Submittable, and Lumenad are some leading tech firms in Missoula



# Disclaimer

CONFIDENTIALITY & DISCLAIMER All materials and information received or derived from SterlingCRE Advisors its directors, officers, agents, advisors, affiliates, and/or any third party sources are provided without representation or warranty as to completeness, veracity, or accuracy, condition of the property, compliance or lack of compliance with applicable governmental requirements, developability or suitability, the financial performance of the property, the projected financial performance of the property for any party's intended use or any and all other matters. Neither SterlingCRE Advisors its directors, officers, agents, advisors, or affiliates makes any representation or warranty, express or implied, as to accuracy or completeness of any materials or information provided, derived, or received. Materials and information from any source, whether written or verbal, that may be furnished for review are not a substitute for a party's active conduct of its own due diligence to determine these and other matters of significance to such party. SterlingCRE Advisors will not investigate or verify any such matters or conduct due diligence for a party unless otherwise agreed in writing. EACH PARTY SHALL CONDUCT ITS OWN INDEPENDENT INVESTIGATION AND DUE DILIGENCE. Any party contemplating or under contract or in escrow for a transaction is urged to verify all information and to conduct their own inspections and investigations including through appropriate third-party independent professionals selected by such party. All financial data should be verified by the party including by obtaining and reading applicable documents and reports and consulting appropriate independent professionals. SterlingCRE Advisors makes no warranties and/or representations regarding the veracity, completeness, or relevance of any financial data or assumptions. SterlingCRE Advisors does not serve as a financial advisor to any party regarding any proposed transaction. All data and assumptions regarding financial performance, including that used for financial modeling purposes, may differ from actual data or performance. Any estimates of market rents and/or projected rents that may be provided to a party do not necessarily mean that rents can be established at or increased to that level. Parties must evaluate any applicable contractual and governmental limitations as well as market conditions, vacancy factors, and other issues in order to determine rents from or for the property. Legal questions should be discussed by the party with an attorney. Tax questions should be discussed by the party with a certified public accountant or tax attorney. Title questions should be discussed by the party with a title officer or attorney. Questions regarding the condition of the property and whether the property complies with applicable governmental requirements should be discussed by the party with appropriate engineers, architects, contractors, other consultants, and governmental agencies. All properties and services are marketed by SterlingCRE Advisors in compliance with all applicable fair housing and equal opportunity laws.