



FOR LEASE PRIME RETAIL/RESTAURANT LOCATION GEORGETOWN

3249 M Street, NW, Washington, DC



Size: Street-level: 1,700sf
 2nd floor: 950sf
 3rd floor: 950sf
 Basement: 1,700sf
 Land/patio: 1,100sf
 Rear bldg.: 850sf

Alley access for trash and loading



For more information, please contact:
 Todd Malamut Todd@NREB.net (301) 770-8586

3249 M Street - Georgetown

One-story
Building
800_±sf

One-story
Building
750_±sf

Three-story
Building
950_±sf
per floor

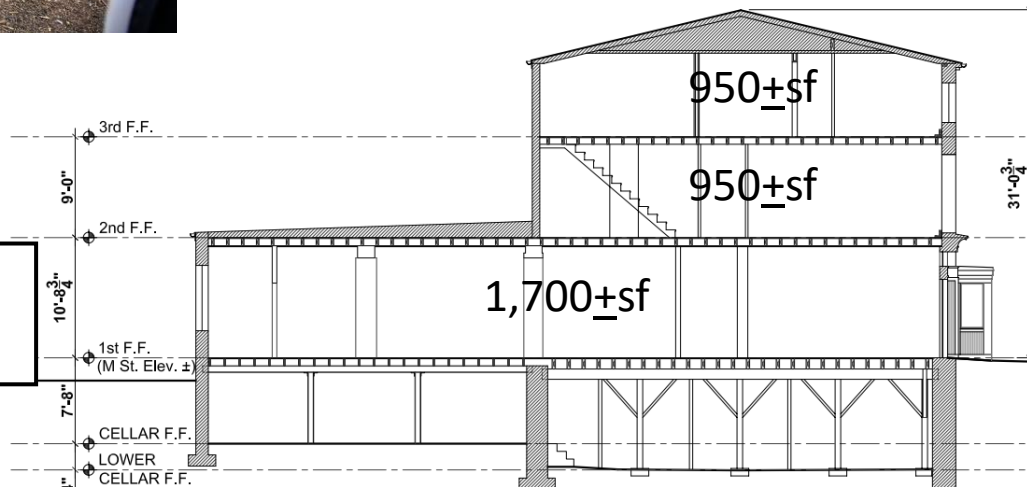
1,100_±sf
Of Land

1,700_±sf



M Street

800_±sf



For more information, please contact:

Todd Malamut Todd@NREB.net (301) 770-8586