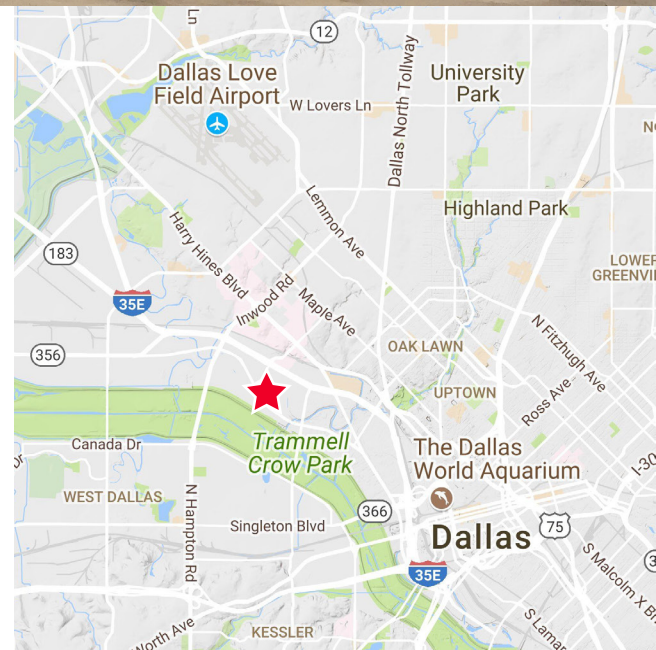




## 10,100 SF Available

### Property Highlights

- Dallas Design District
- Freestanding
- ± 750 sf Office
- 2 Dock High Doors (1 Ramped)
- 400 Amp 3 Phase Power
- 14' Clear Height
- Excellent Exposure

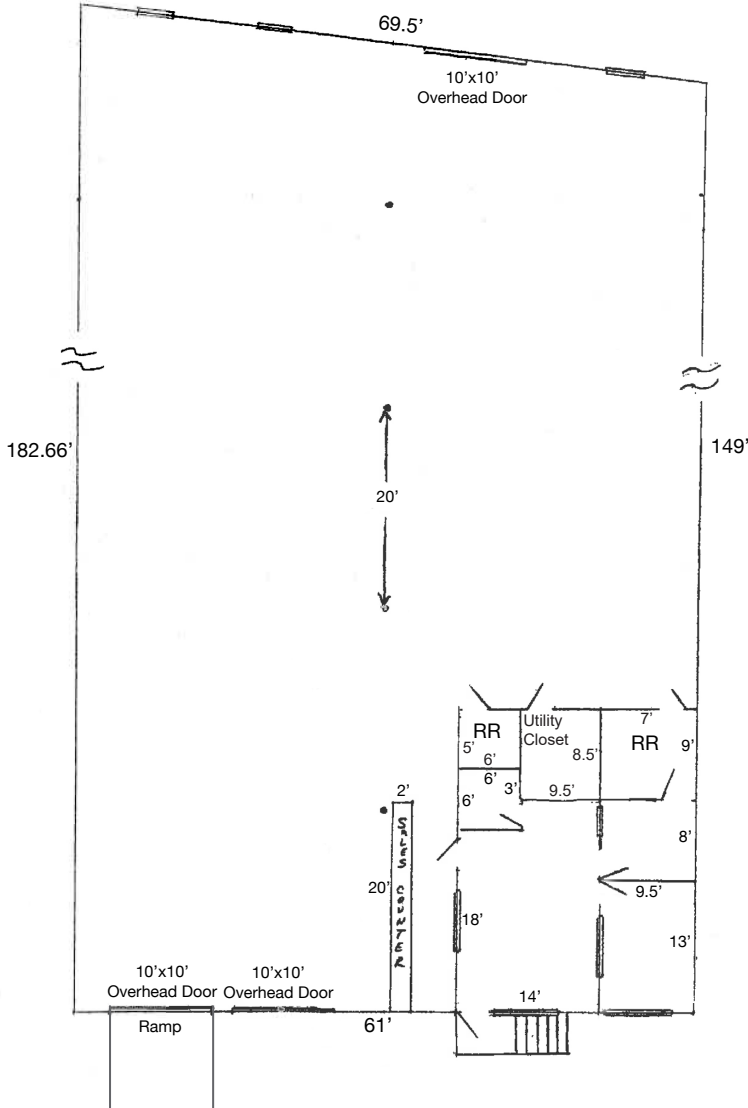


### Jay R. Lucas, CCIM

Senior Director  
+1 972 663 9705  
jay.lucas@cushwake.com

2021 McKinney Ave, Suite 900  
Dallas, Texas 75201  
main +1 972 663 9600  
fax +1 972 663 9999  
**cushmanwakefield.com**

Site Plan



Interior Photography



**Jay R. Lucas, CCIM**  
Senior Director  
+1 972 663 9705  
jay.lucas@cushwake.com

2021 McKinney Ave, Suite 900  
Dallas, Texas 75201  
main +1 972 663 9600  
fax +1 972 663 9999  
**cushmanwakefield.com**