



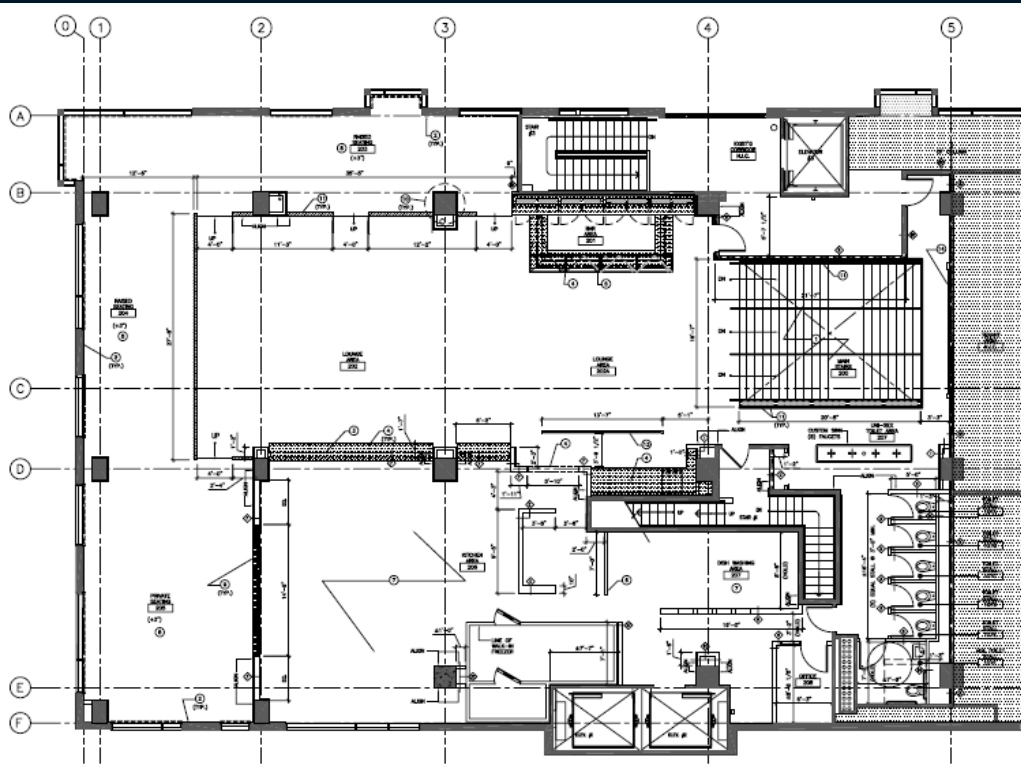
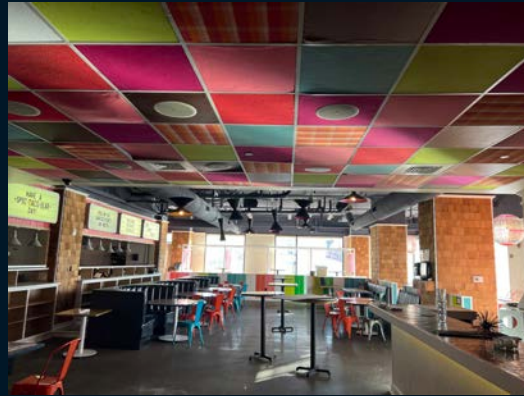
For lease

Opportunity in the Heart of University City
2,000 - 6,236 SF of office/medical, health club

Property specifications

- 2,000 - 6,236 SF 2nd floor space available
- Office, medical office, life science, gym space
- Massive window line on Chestnut Street and 40th Street
- Signage opportunity

3945 Chestnut Street Philadelphia, PA



Scott Williams
Managing Director
scotta.williams@jll.com
+1 610 249 2259

Jessie Sorgi
Associate, Brokerage
jessie.sorgi@jll.com
+1 610 755 1238

Jones Lang LaSalle Brokerage, Inc.
550 E. Swedesford Road, Suite 260
Wayne, PA 19087
+1 610 249 2255

jll.com

Although information has been obtained from sources deemed reliable, neither Owner nor JLL makes any guarantees, warranties or representations, express or implied, as to the completeness or accuracy as to the information contained herein. Any projections, opinions, assumptions or estimates used are for example only. There may be differences between projected and actual results, and those differences may be material. The Property may be withdrawn without notice. Neither Owner nor JLL accepts any liability for any loss or damage suffered by any party resulting from reliance on this information. If the recipient of this information has signed a confidentiality agreement regarding this matter, this information is subject to the terms of that agreement. ©2024. Jones Lang LaSalle IP, Inc. All rights reserved.