

5 OCEANFRONT LOTS AVAILABLE FOR SALE KUKUIPAHU MAKAI

• HAWI, HAWAII 96719 •

106.25 ± ACRES

LAND ADVISORY GROUP

 CUSHMAN &
WAKEFIELD

ChaneyBrooks

Parker  Ranch[®]
est. 1847

PROPERTY OVERVIEW

Kukuipahu Makai offers 106± acres of unparalleled oceanfront land and the opportunity to build a residence on each of the five TMKs ranging from 20.03 to 24.58 acres in size. The unobstructed views from each parcel extend from the shoreline to the backside of Haleakala Maui. The opportunity also provides a purchaser the option to preserve the land for agricultural uses such as farming and raising livestock while enjoying a quiet ranch life.

Ideal for a private, upscale residential community, family compound, or continued traditional ranch use, the property presents a unique chance to own a piece of Parker Ranch's historic legacy near the historic towns of Hāwī & Kapa'au as well as the rolling pastures where Hawaii's legacy cattle operation has called home for generations.

[VIEW PROPERTY VIDEO](#)



PROPERTY DETAILS

LOCATION	HAWI, HI 96719
TMK	(3) 5-6-001:098, 099, 100, 101, 102
SIZE	106.25 ACRES
ZONING	A-20A - AGRICULTURAL DISTRICT (MINIMUM BUILDING SITE OF 20 ACRE)
ALLOWED USES	ALLOWED USES INCLUDE: SINGLE FAMILY RESIDENTIAL, OPEN AREA RECREATIONAL FACILITIES (CAMPGROUNDS, PARKS, ETC), AGRICULTURAL & LIVESTOCK PRODUCTION, RIDING ACADEMIES & BOARDING STABLES, AND GROUP LIVING FACILITIES
EXISTING SITE CONDITION	UNDEVELOPED LAND
UTILITIES	THE DEPARTMENT OF WATER SUPPLY SYSTEM ENDS AT PUAKEA BAY ROAD

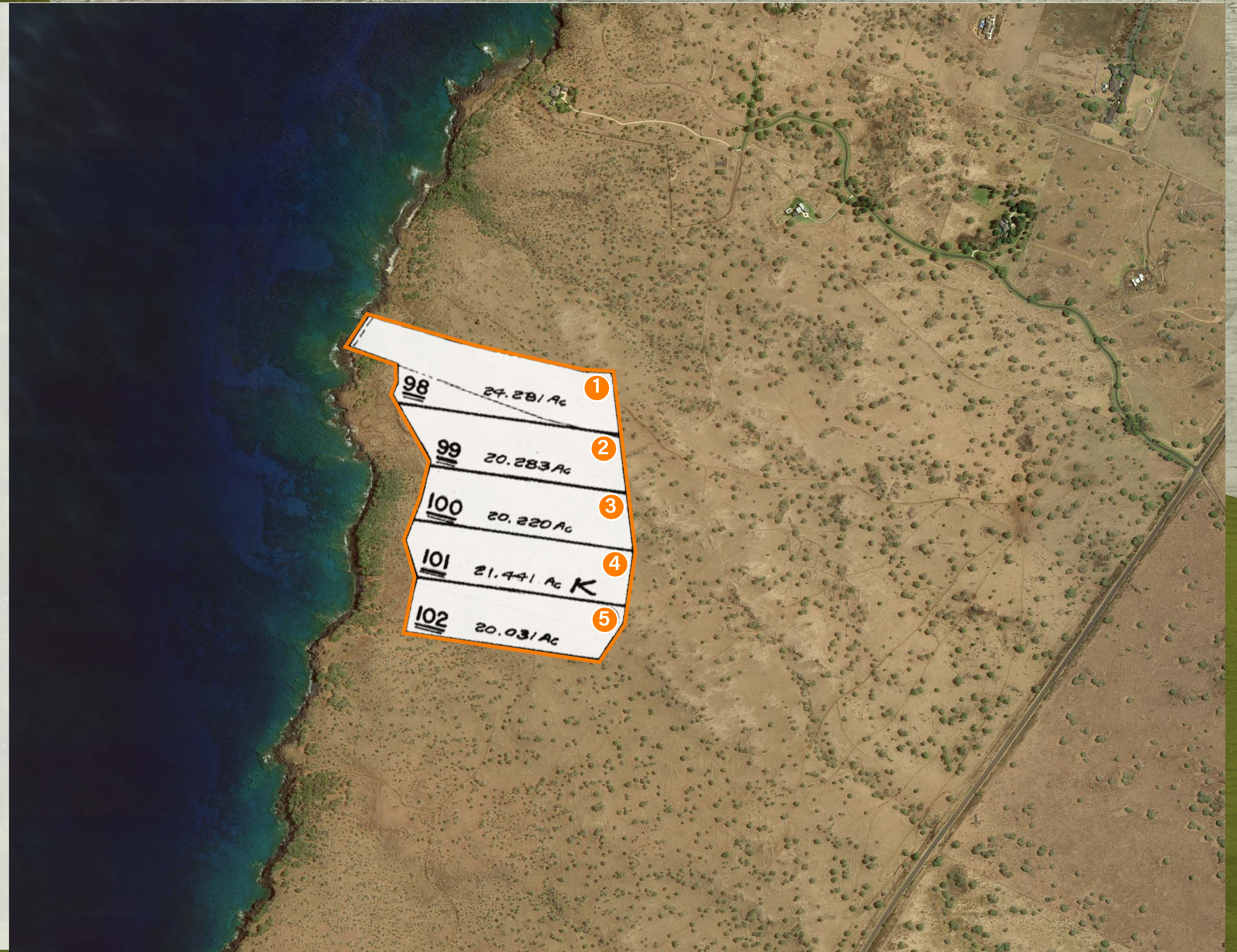


[VIEW THE INTERACTIVE MAP](#)

TMK MAP

PARCEL	TMK	SIZE (ACRES)
1	(3) 5-6-001:098	24.28
2	(3) 5-6-001:099	20.28
3	(3) 5-6-001:100	20.22
4	(3) 5-6-001:101	21.44
5	(3) 5-6-001:102	20.03
Total		106.25

A buyer could develop a private estate or family compound on all or a portion of the site and utilize or sell the remaining undeveloped parcels separately.





LOCATION

KONA-KOHALA

The Kona-Kohala coast is known for its transcendent beauty of unparalleled oceanfront views and majestic coastline ranging from jagged rocks to tropical beaches and is home to many world-class accommodations such as internationally known resorts, fine-dining, as well as private home developments. The northern tip of the Island offers a rich history of sugar plantations, royalty and Parker Ranch's legacy cattle operations.





LOCATION

HAWI & KAPAAU

Within the Paniolo Country near Parker Ranch's legacy operation, Hawi and Kapaau each hold their own charming history perfect for local comfort and tourist excitement. Hawi provides a unique shopping experience and an artistic scene with colorful and lively boutiques, local art galleries, and restaurants. Adjacent is the Kapaau village where one can enjoy an easy lifestyle of beautiful pastures, valley overlooks and beaches.



TERMS

Price: \$12,500,000

Seller will consider offers on individual lots

Tours: All tours must be coordinated through Cushman & Wakefield

CONTACTS

ANTHONY PROVENZANO (B) SIOR, CCIM

Senior Vice President
+1 808 544 1780
aprovenzano@chaneybrooks.com
Lic #RB-22101

MATT DAVIS

Senior Director
+1 858 334 4026
matt.davis@cushwake.com
CA Lic #01758818

MELANIE HAYNES

Director
+1 760 431 3848
melanie.haynes@cushwake.com
CA Lic #02043811

©2023 Cushman & Wakefield. All rights reserved. The information contained in this communication is strictly confidential. This information has been obtained from sources believed to be reliable but has not been verified. NO WARRANTY OR REPRESENTATION, EXPRESS OR IMPLIED, IS MADE AS TO THE CONDITION OF THE PROPERTY (OR PROPERTIES) REFERENCED HEREIN OR AS TO THE ACCURACY OR COMPLETENESS OF THE INFORMATION CONTAINED HEREIN, AND SAME IS SUBMITTED SUBJECT TO ERRORS, OMISSIONS, CHANGE OF PRICE, RENTAL OR OTHER CONDITIONS, WITHDRAWAL WITHOUT NOTICE, AND TO ANY SPECIAL LISTING CONDITIONS IMPOSED BY THE PROPERTY OWNER(S). ANY PROJECTIONS, OPINIONS OR ESTIMATES ARE SUBJECT TO UNCERTAINTY AND DO NOT SIGNIFY CURRENT OR FUTURE PROPERTY PERFORMANCE.

LAND ADVISORY GROUP

