

AVAILABLE

www.gatewaybp.com

2,854 Square Feet

Expandable to 4,250 SF



\$1.85 PSF Gross

\$.12 PSF CAM—No Other OPEX

10683 Magnolia Avenue, Riverside, CA 92505

Adjacent to Kaiser Riverside Medical Center

Remodeled in 2017—5 Exam Rooms & Procedure Room

2 Private Offices, Billing Office, 2 Bathrooms, Employee Lounge



Robert J. Colacion

#01083464

310.722.0079 mobile

rjc@gatewaybp.com

GATEWAY
BUSINESS PROPERTIES

www.gatewaybp.com

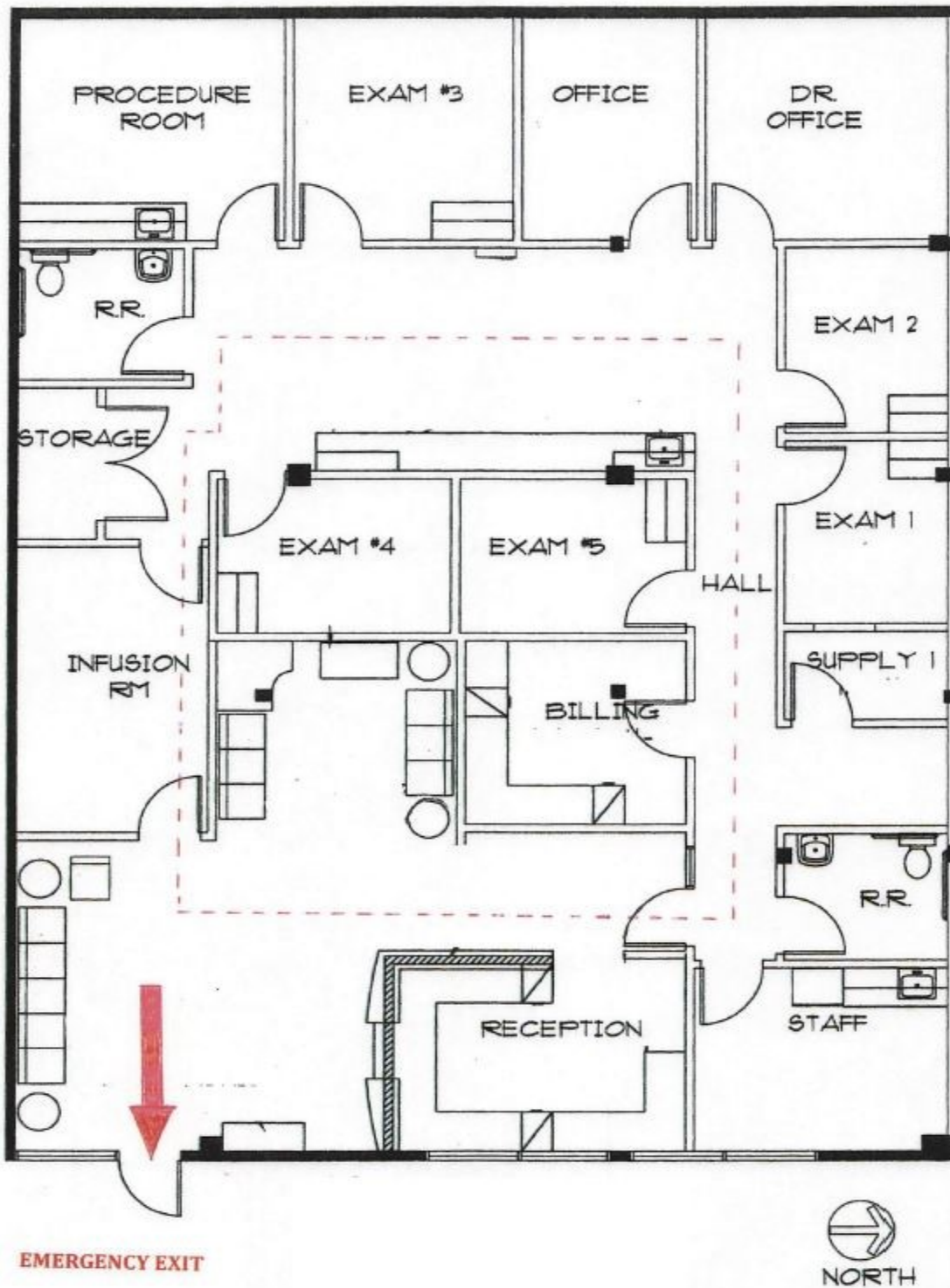
License #01237218

AVAILABLE

www.gatewaybp.com

2,854 Square Feet

Expandable to 4,250 SF



Robert J. Colacion

#01083464

310.722.0079 mobile

rjc@gatewaybp.com

GATEWAY
BUSINESS PROPERTIES

www.gatewaybp.com

License #01237218