

160 & 166 VICTOR STREET HIGHLAND PARK, MICHIGAN

INDUSTRIAL FOR SALE
4,268 & 6,000 Square Feet



**SIGNATURE
ASSOCIATES**
KNOW SIGNATURE | KNOW RESULTS



160 VICTOR STREET



166 VICTOR STREET

160 VICTOR STREET:

- 4,268 square feet available
- 3,000 square feet office space
- 14' clear height
- (1) 9' x 12' grade level door
- Current broadcast facility – could be converted back to warehouse/office
- Fenced and paved yard
- Sale Price: \$225,000 (\$52.72/sq. ft.)

**Price does not include cell tower lease*

166 VICTOR STREET:

- 6,000 square feet available
- 100 square feet office space
- 20' clear height
- (1) 14'x14' grade level door
- Rare size, clear span building in good condition
- Sale Price: \$330,000 (\$55.00/sq. ft.)



For more information, please contact:

JOE STACK
(248) 359 0615
jstack@signatureassociates.com

CHRIS SECONTINE
(248) 799 3174
csecontine@signatureassociates.com

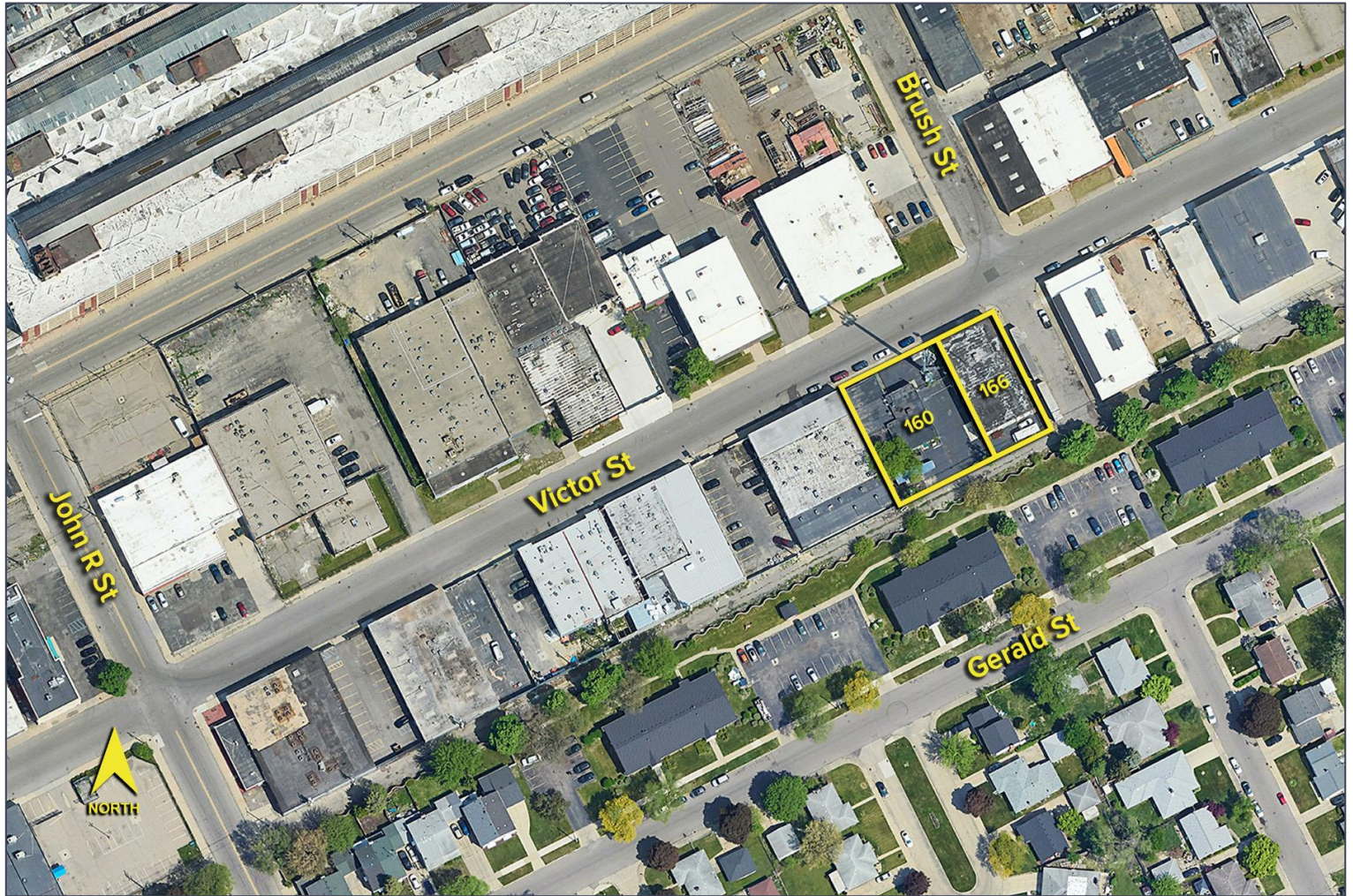
SIGNATURE ASSOCIATES
One Towne Square, Suite 1200
Southfield, MI 48076
www.signatureassociates.com

160 & 166 Victor Street – Highland Park, Michigan

Industrial For Sale

4,268 & 6,000
Square Feet
AVAILABLE

Aerial



For more information, please contact:

JOE STACK
(248) 359 0615
jstack@signatureassociates.com

CHRIS SECONTINE
(248) 799 3174
csecontine@signatureassociates.com

SIGNATURE ASSOCIATES
One Towne Square, Suite 1200
Southfield, MI 48076
www.signatureassociates.com