

1109 WEST POINSETT STREET, GREER

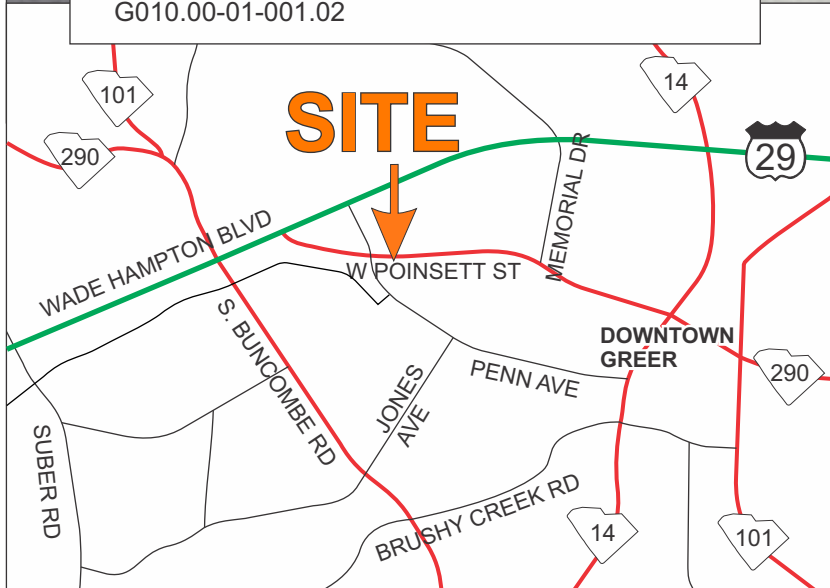
- STE A: 2,161+- SF
- STE B: 3,329+- SF (INCLUDES 646+- SF UNFINISHED 2ND STORY SPACE)
- STE C: 3,313+- SF (INCLUDES 1,100+- SF FINISHED 2ND STORY SPACE)

8,803+- SF BUILDING



- BUILDING IS FULLY LEASED (3 TENANTS)
- SUITE B TENANT'S LEASE IS MONTH TO MONTH AND CAN BE OCCUPIED WITH 60 DAY NOTICE
- GREENVILLE COUNTY TAX MAP G010.00-01-001.02

- ZONED CITY OF GREER CG (COMMERCIAL GENERAL)
- 43 PARKING SPACES
- 0.7+- ACRE LOT
- 2023 TRAFFIC COUNT: 12,100 VPD
- NEXT TO UNITED BANK
- ONLY 0.3+- MILE FROM WADE HAMPTON BLVD (HWY 29)



\$1,470,000

FOR MORE INFORMATION CALL
TIM ALLENDER AT 864-884-2198
tallender@langston-black.com

LANGSTON BLACK
REAL ESTATE, INC.

P.O. BOX 2167
GREER, S.C. 29652
BUS: 864-848-9070

201

www.langston-black.com



SUITE A



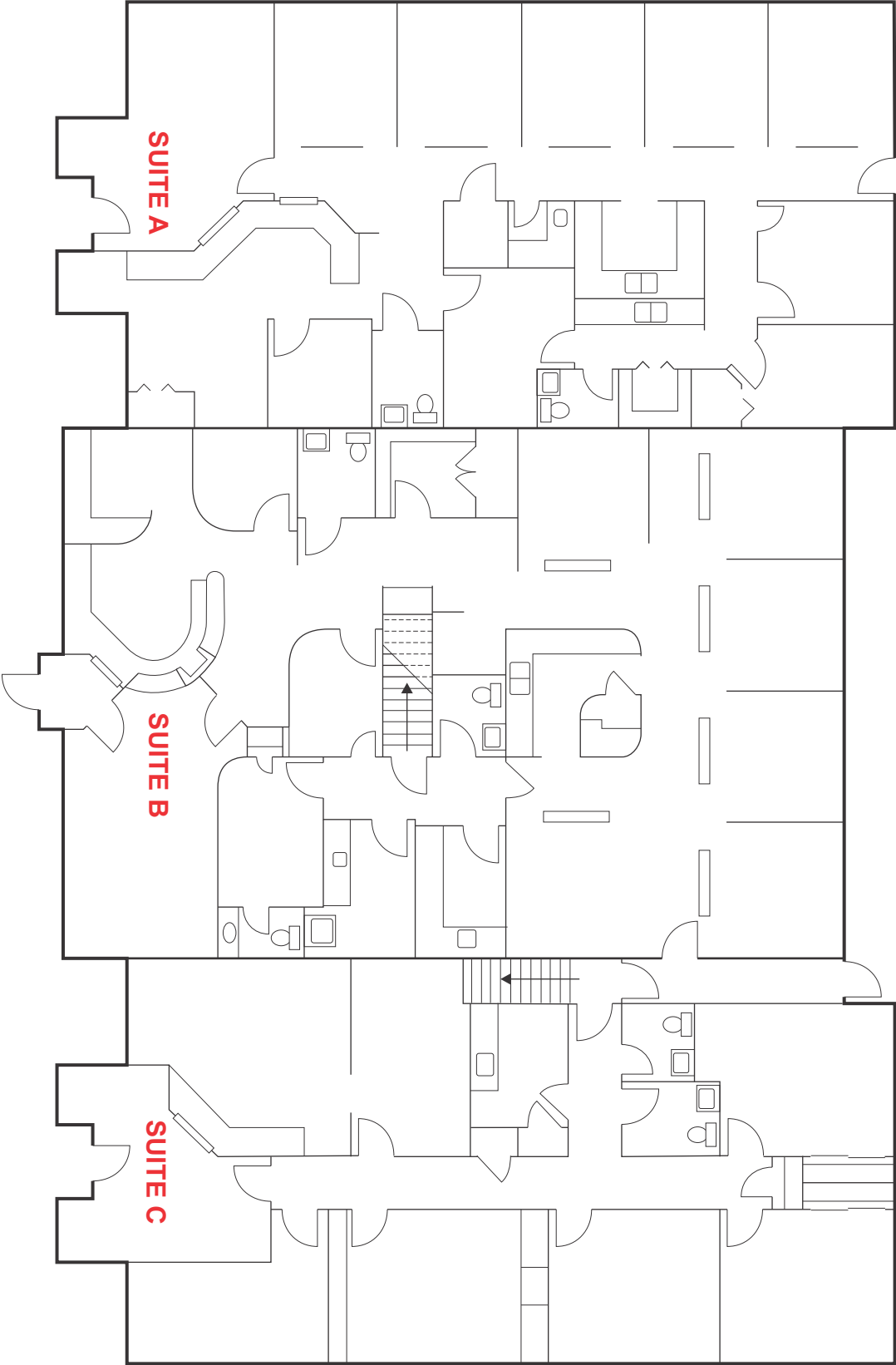
SUITE B





1ST FLOOR

FRONT OF BUILDING - FACES WEST POINSETT STREET



2ND FLOOR

FRONT OF BUILDING - FACES WEST POINSETT STREET

