



PORTAL
WAREHOUSING

[JOIN-PORTAL.COM](https://www.join-portal.com)

MINNEAPOLIS

4440 Round Lake Rd W, Arden Hills, MN 55112



CONTACT

Wayne Zimmerman

Property Manager, Portal Warehousing

📞 (612) 230-1020

BOOK A TOUR 📱



PORTAL WAREHOUSING MINNEAPOLIS

4440 W Round Lake Rd, Arden Hills, MN 55112

100 - 2,700 SF of Space Available

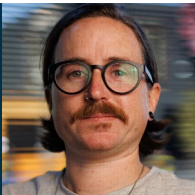
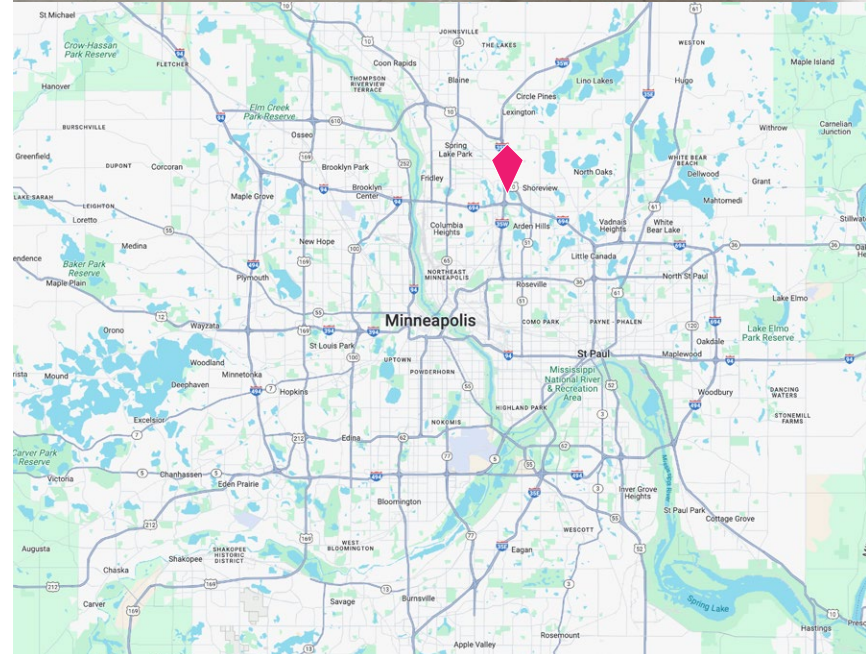
Portal Warehousing Minneapolis at 4440 W Round Lake Road offers flexible warehouse and logistics space for e-commerce, logistics, and growing businesses. Private warehouse units with short-term and flexible agreement range from 100 to 2,700 square feet. Complete with all-inclusive amenities that elevate and grow businesses, Portal Warehousing Minneapolis has everything needed to put its members and their products first.

Members at Portal Warehousing will gain access to services, technology partnerships, shipping and logistics, and community events that add premier value. This facility has consultants ready to help supercharge growth in operational, digital marketing, finance, accounting, and logistics needs. Take advantage of membership perks like super-fast internet, top-notch security, reception services, private offices, paid-for utilities, and easy monthly billing. The warehouse space features industrial amenities, including loading docks, grade-level doors, logistics equipment, daily carrier pick-ups, and shipping/receiving addresses.

Strategically positioned near major transportation routes, the site provides immediate access to the surrounding area between the junction of Interstate 694 and Interstate 35W and the Interstate 35W/Highway 96 W intersection. US Highway 10 is also just minutes away, furthering the property's unparalleled connectivity. This access places 4440 W Round Lake Road 15 minutes from both Downtown Minneapolis and Downtown St. Paul and approximately 30 minutes from Minneapolis-St. Paul International Airport (MSP).

HIGHLIGHTS

- All warehouse units have access to dock-high and grade-level doors, daily pickups from UPS, USPS and FedEx, and an on-site manager who can receive inbounds.
- Flexible agreement ranging from 3-24 months, allowing businesses to focus on growth without locking themselves in.
- Move-in ready units and a simple agreement mean you can move in same-day.
- All-inclusive pricing includes utilities, wifi, logistics services, and more.



CONTACT

Wayne Zimmerman
Property Manager, Portal Warehousing
📞 (612) 230-1020

BOOK A TOUR 📱



WELCOME TO CO-WAREHOUSING

70 SF to 2,700 SF Units Available

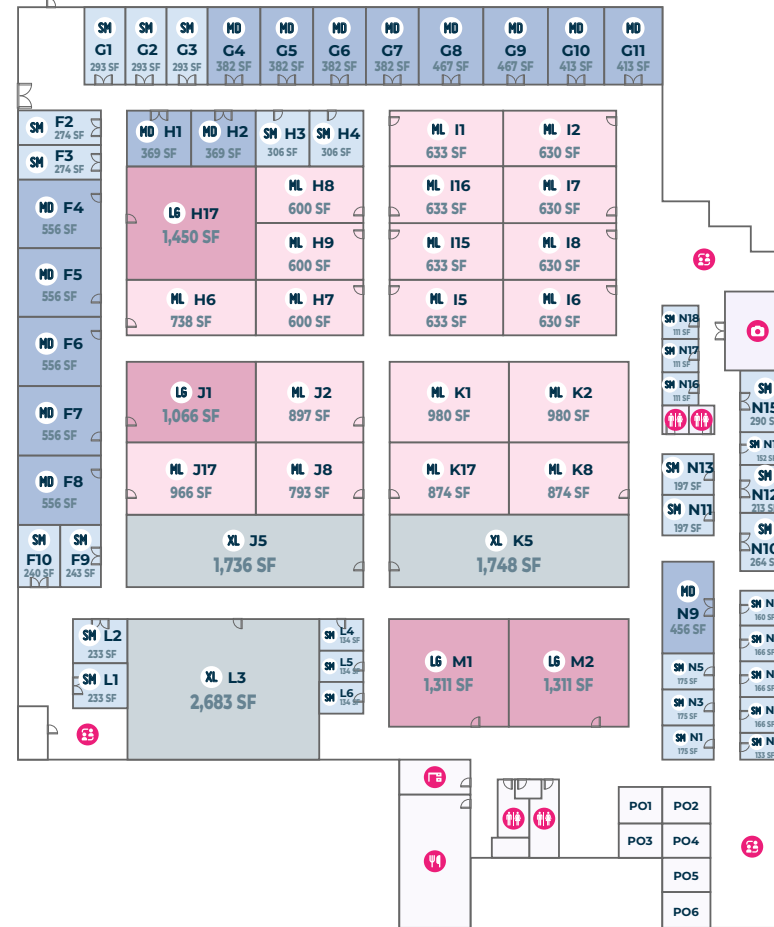
Flexible warehouse and logistics space for e-commerce, logistics, and growing businesses

Amenities

- Top Notch Security
- Technology Partnerships
- Shipping/Receiving Address
- Community Events
- Easy Monthly Billing
- Super Fast Internet
- Utilities Included
- Growth Support
- Private Offices
- Daily Carrier Pickups
- Loading Docks/ Equipment
- Reception Services

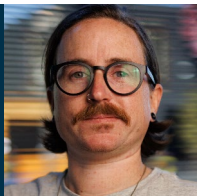
KEY

- Manager Office
- Office
- Co-Working
- Kitchenette
- Bathroom
- Docking Area
- Photo Studio
- Small Unit
- Medium Unit
- Medium Large Unit
- Large Unit
- Extra Large Unit



SPACE	SQUARE FOOTAGE	STARTING PRICING*
Small Space	70 to 350 SF	From \$1,000
Medium Space	350 to 600 SF	From \$1,250
Medium Large Space	600 to 1,000 SF	From \$1,850
Large Space	1,000 to 1,500 SF	From \$2,750
Extra Large Space	1,500+ SF	From \$3,750

* Pricing varies by availability, membership term and market conditions. Contact us for current rates.



CONTACT

Wayne Zimmerman
Property Manager, Portal Warehousing
(612) 230-1020

BOOK A TOUR





WHAT DOES YOUR WAREHOUSE ACTUALLY COST?

Our Pricing Model Saves Tenants Thousands Of Dollars

Our all inclusive monthly rent covers everything you need to occupy your space, which provides tenants with significant cost savings compared to renting a traditional small bay warehouse unit.

Average Monthly Costs for a 1,000 SF Space	Portal Warehousing	Small Bay Warehouse
Base Rent (1,000 SF Unit)	\$2,750	\$1,650
NNN Expenses (CAM, Property Insurance, Property Taxes)	Included	\$300
Building Repairs (Averaged Over the Year)	Included	\$100
Electricity	Included	\$250
Water	Included	\$75
Trash Dumpster Service	Included	\$150
Gas/Heating/HVAC	Included	\$50
WiFi	Included	\$150
Janitor Cleaning (2x Per Month)	Included	\$300
Warehouse Equipment Lease (Forklift, Pallet Jacks, Push Carts)	Included	\$125
Daily Courier Pickup (UPS, FedEx, USPS, DHL)	Included	\$250
Full Camera & Security System	Included	\$75
Extras: On-site Property Manager (can replace 1 FTE)	Included	Additional Tenant Cost
Extras: Photography / Content Studio	Included	Additional Tenant Cost
Extras: Co-Working Area, Lounge, Kitchen and Reception	Included	Additional Tenant Cost
Extras: Conference & Office Rooms	Included	Additional Tenant Cost
Total (Monthly)	\$2,750	\$3,475
Total (Annual)	\$33,000	\$41,700

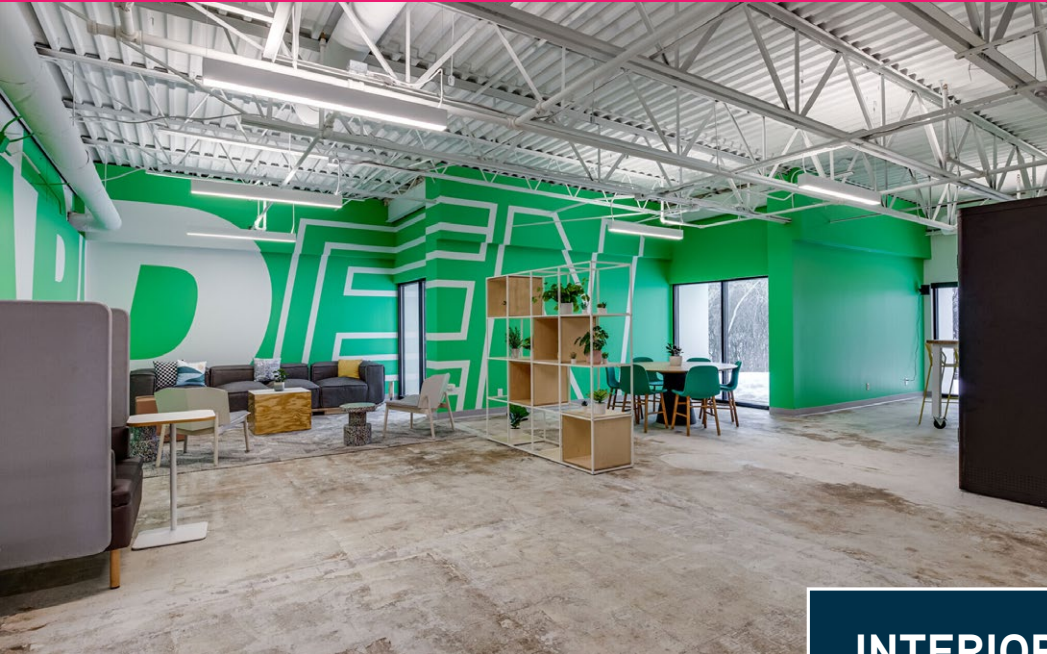


CONTACT

Wayne Zimmerman
 Property Manager, Portal Warehousing
 📞 (612) 230-1020

BOOK A TOUR 📱





INTERIOR PHOTOS



CONTACT

Wayne Zimmerman
Property Manager, Portal Warehousing
📞 (612) 230-1020

BOOK A TOUR 📱

