

Spring House Village

1111 Bethlehem Pike
Spring House, PA 19477

± 7,108 SF Medical Office Available For Lease
± 4,900 SF Available For Lease



Spring House Village

1111 Bethlehem Pike | Spring House, PA 19477

For Lease

Property Details

Join: Whole Foods, Trek, CVS, Starbucks, Arpeggio

Spring House Village Shopping Center is located in an affluent market of Montgomery County, Pennsylvania with a median household income of \$102,086. The center totals 111,400 SF, built in 2017 and is anchored by Whole Foods, Philadelphia MSA's newest location. The center overlooks the intersection of Bethlehem and Sumneytown Pike with a total traffic count of 66,173 VPD.



Close Proximity To Major Roadways (PA Turnpike, Rt 202, I-476, And Rt 309)



64.5% Population Age 25+
Bach/Grad/Prof Degree
Within 3 Miles



66,000+
Traffic Counts Per Day



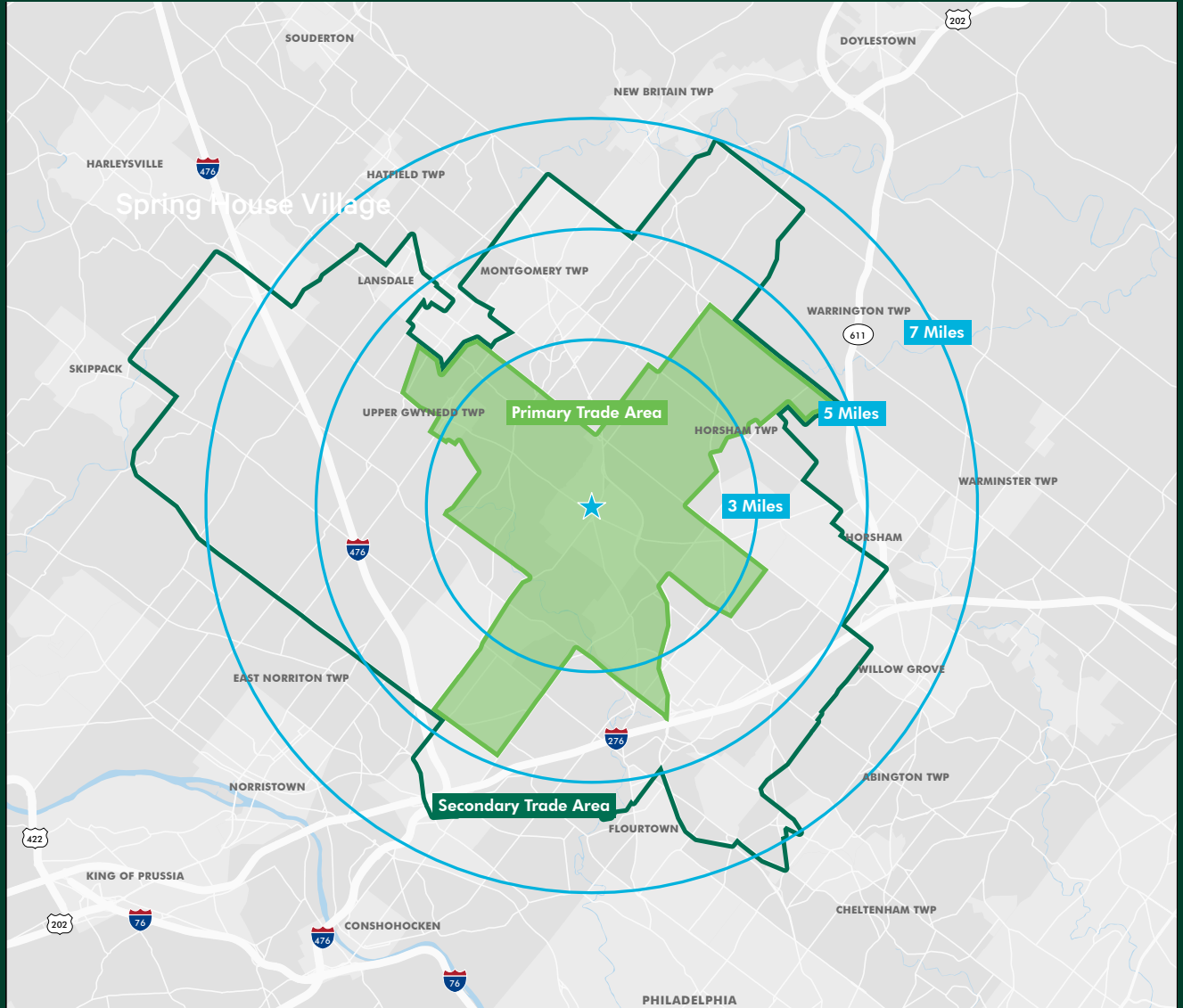
3 Miles - \$134,039
Median Household Income






7 Miles - 368,274
Daytime Population



Mobile Data Trade Area Overview



DEMOGRAPHICS

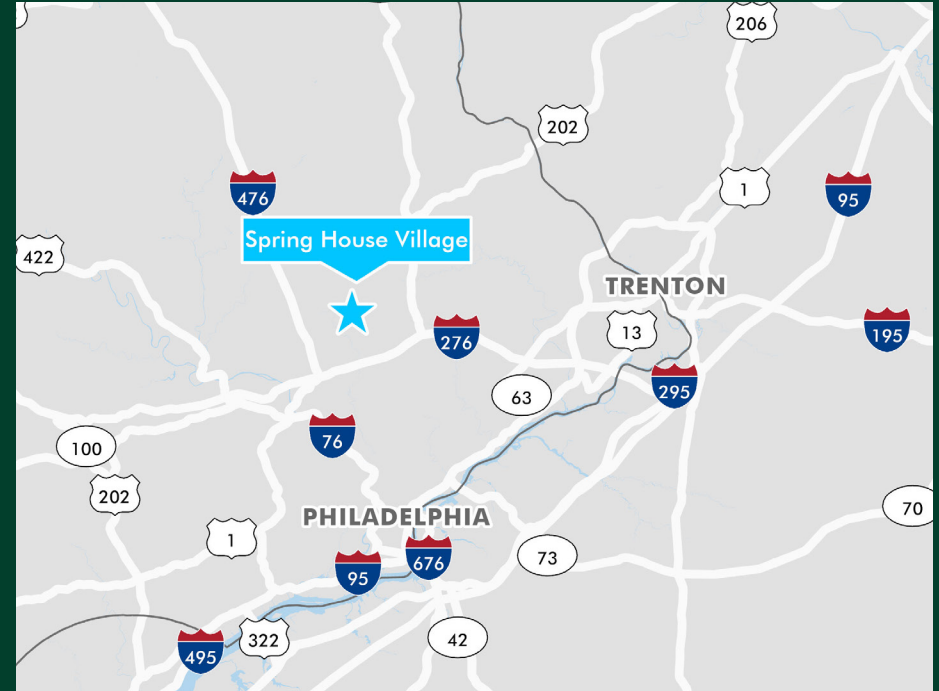
	 POPULATION	 DAYTIME POPULATION	 MEDIAN HOUSEHOLD INCOME
PRIMARY TRADE AREA	28,063	28,255	\$102,086
SECONDARY TRADE AREA	138,247	159,159	\$112,784
3 MILES	49,977	55,486	\$134,039
5 MILES	145,117	176,192	\$128,302
7 MILES	345,286	368,274	\$115,107

Spring House Village

1111 Bethlehem Pike | Spring House, PA 19477

For Lease

Property Location

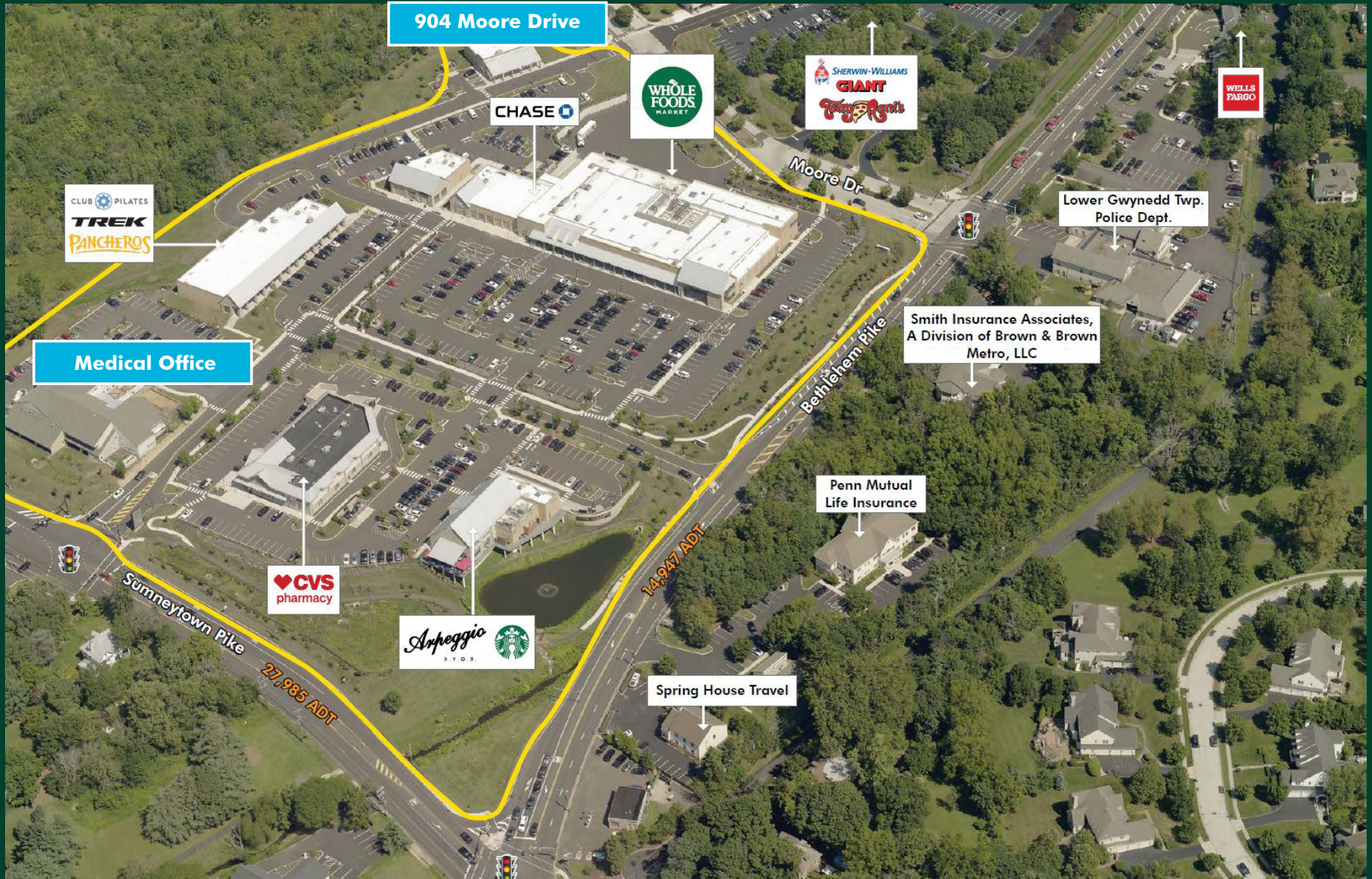


Spring House Village

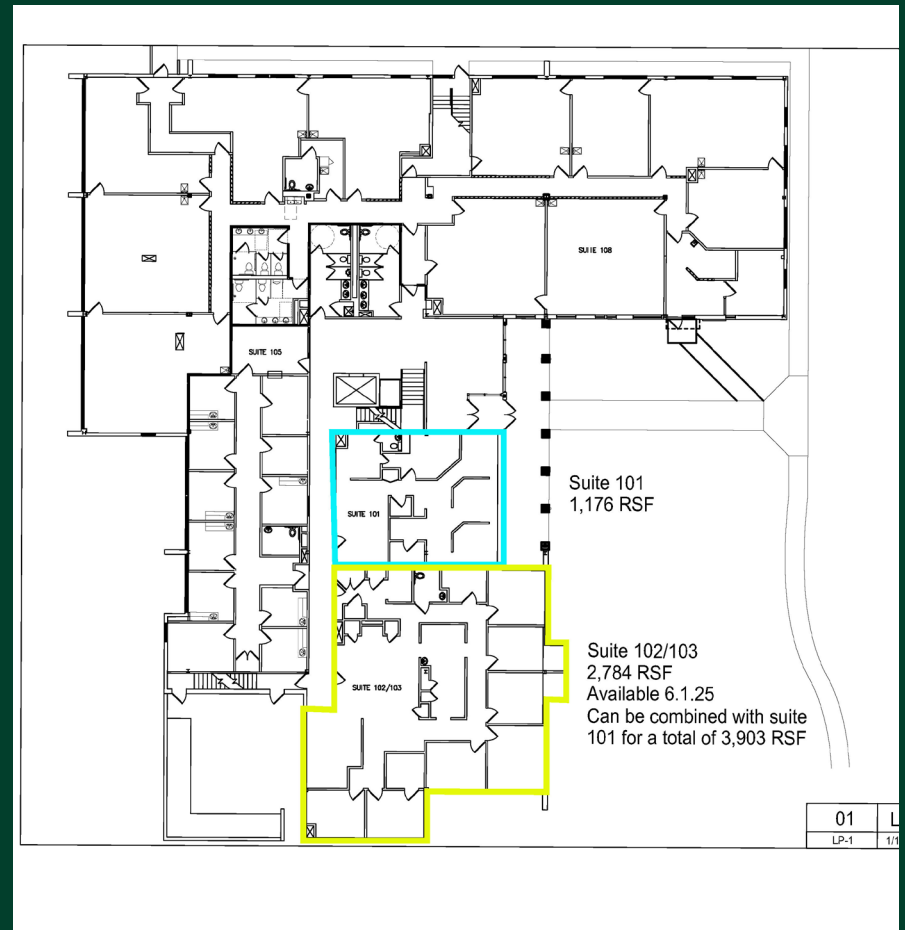
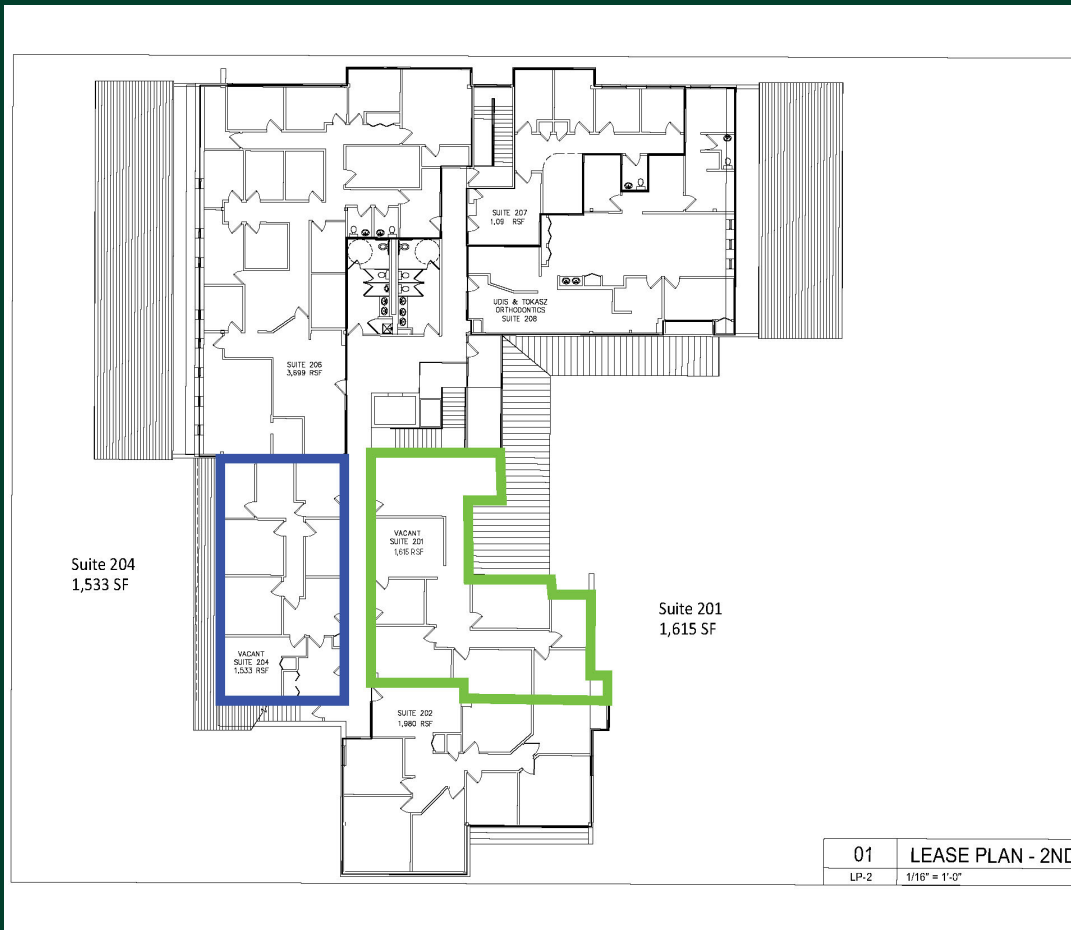
1111 Bethlehem Pike | Spring House, PA 19477

Property Location

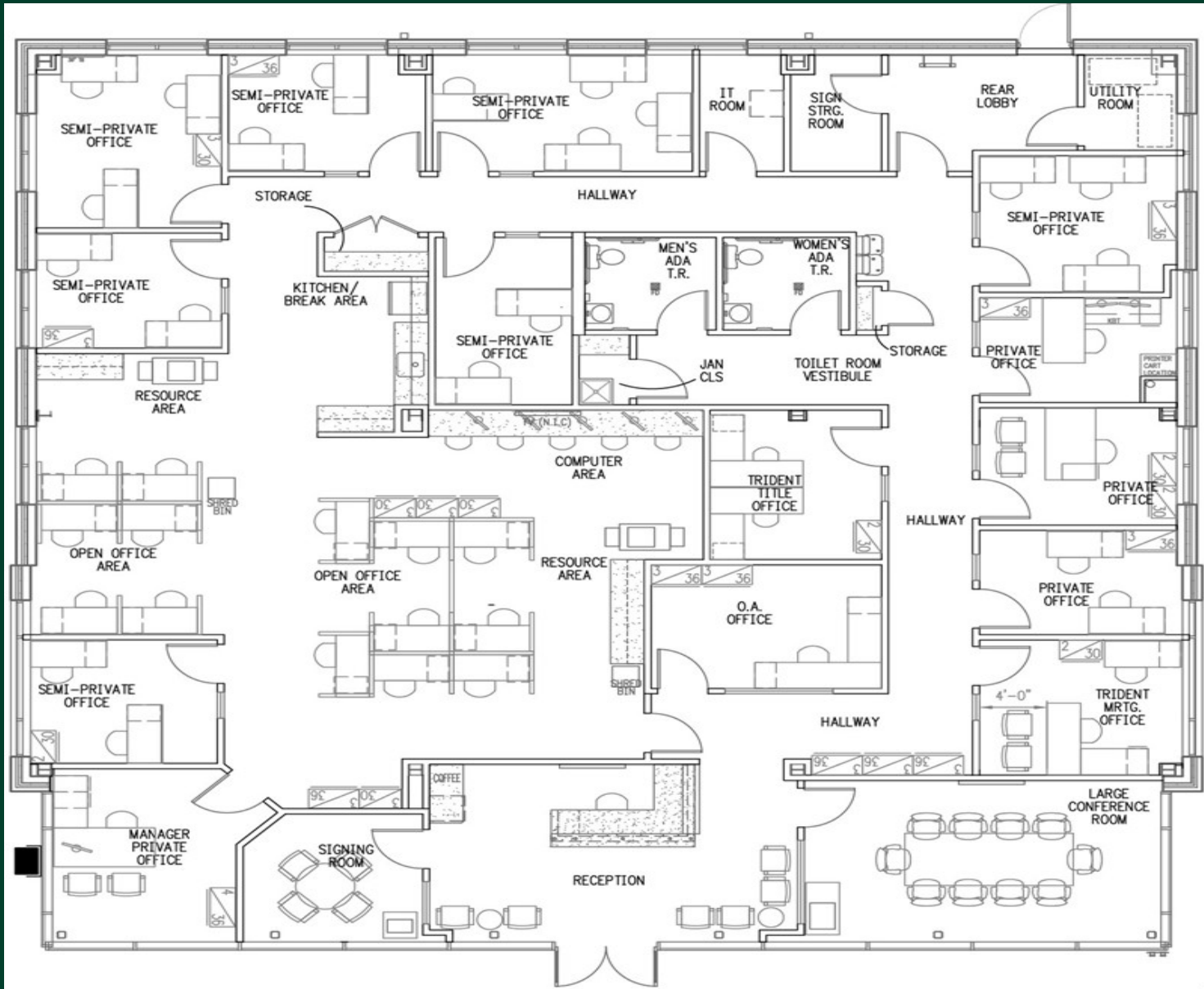
For Lease



Spring House Available Floor Plans



904 Moore Drive Available For Plan



± 4,900 SF Available For Lease

Spring House Village

1111 Bethlehem Pike | Spring House, PA 19477

For Lease

904 Moore Drive Photos



CBRE

Spring House Village

1111 Bethlehem Pike | Spring House, PA 19477

For Lease



Contact Us

Stephen Kriz

Senior Vice President
+1 610 251 5177
stephen.kriz@cbre.com
Licensed: PA

© 2025 CBRE, Inc. All rights reserved. This information has been obtained from sources believed reliable, but has not been verified for accuracy or completeness. You should conduct a careful, independent investigation of the property and verify all information. Any reliance on this information is solely at your own risk. CBRE and the CBRE logo are service marks of CBRE, Inc. All other marks displayed on this document are the property of their respective owners, and the use of such logos does not imply any affiliation with or endorsement of CBRE. Photos herein are the property of their respective owners. Use of these images without the express written consent of the owner is prohibited.