

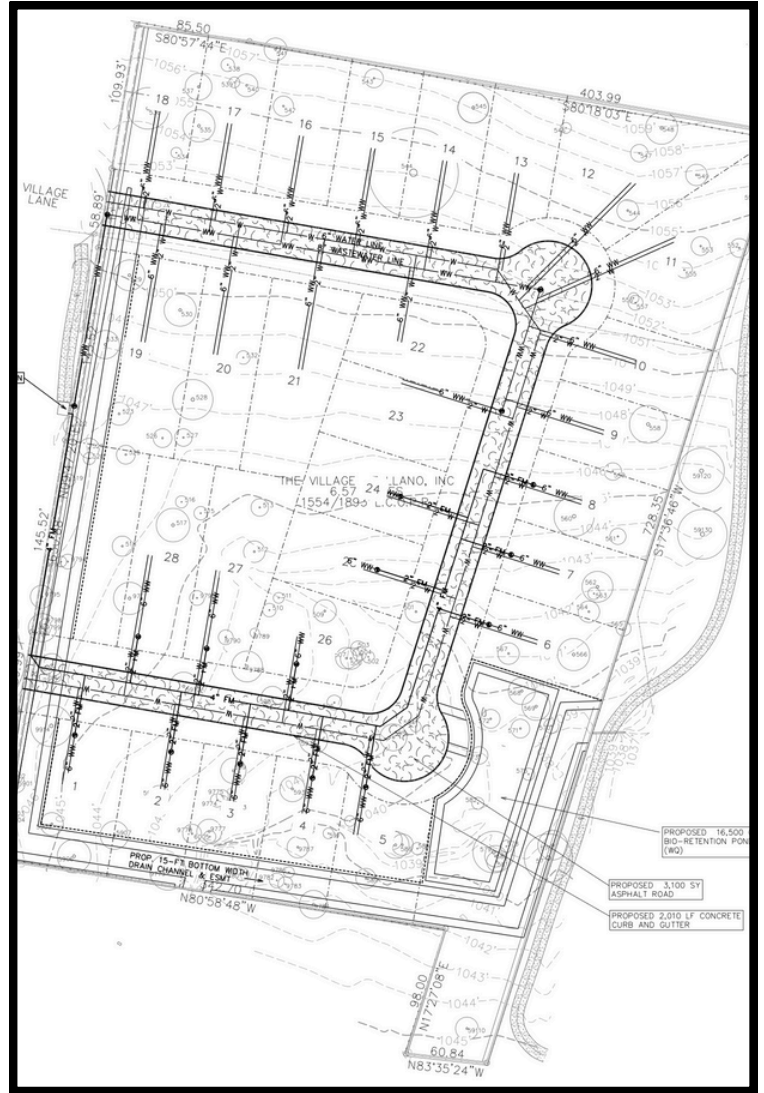


Friedman Real Estate

CREATING REAL VALUE IN PROPERTY AND PLACES.

FOR SALE

**6.57 AC FOR DEVELOPMENT
Llano, TX 78643**



ABOUT THIS PROPERTY

LLANO, TEXAS – HILL COUNTRY DEVELOPMENT OPPORTUNITY | 6.57 ACRES ADJACENT TO LLANO HIGH SCHOOL FOOTBALL STADIUM
BRING YOUR VISION TO LIFE ON THIS PRIME HILL COUNTRY PARCEL JUST OFF SH 16/E HWY 71. CONCEPTUAL DRAWINGS HAVE BEEN DONE TO SHOW THE POTENTIAL OF UP TO 28 RESIDENTIAL LOTS, OFFERING AN EXCEPTIONAL OPPORTUNITY FOR BUILDERS AND DEVELOPERS ALIKE.

STRATEGICALLY LOCATED NEAR THE JUNCTION OF HIGHWAYS 16, 71, 2323, AND 29, THIS PROPERTY BENEFITS FROM EXCELLENT CONNECTIVITY AND PROXIMITY TO SCHOOLS, THE HOSPITAL, AND KEY EMPLOYMENT CENTERS.

HIGHLIGHTS:

- OVERHEAD ELECTRICITY ALONG REAR PROPERTY LINE
- PRIME LOCATION NEAR SCHOOLS, HEALTHCARE, AND MAJOR EMPLOYERS
- CITY UTILITIES TO THE SITE WITH CONFIRMED CAPACITY

THIS IS AN OUTSTANDING OPPORTUNITY TO DEVELOP IN A GROWING, CLOSE-KNIT HILL COUNTRY COMMUNITY EAGER TO COLLABORATE AND SUPPORT THOUGHTFUL DEVELOPMENT.

CONTACT DETAILS

**JOSH FRIEDMAN
BROKER/OWNER**



O: (512) 892-9934
C: (512) 924-5323



JOSH@FRIEDMANREALTORS.COM

