

# Investing in Community



**Zoned TOD-C**  
Transit Oriented Development  
Center District



**2.66 acres**  
of land



**16,500 SF**  
one-story building built in 1977

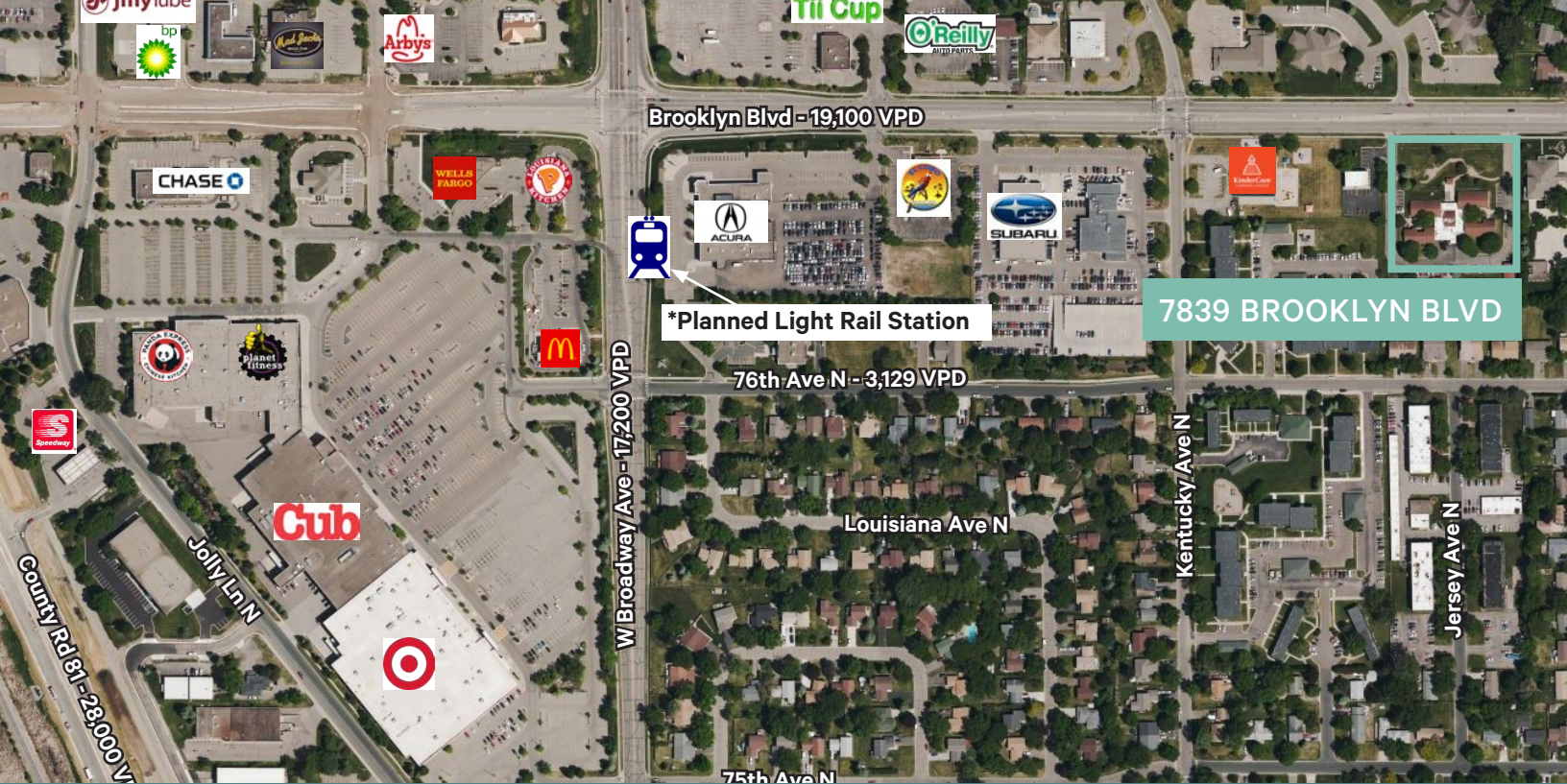


A forward-thinking business community.



**BROOKLYN PARK, MN**





## Brooklyn Park

### Potential Uses

- Office
- Medical and dental clinics
- Multiple dwelling
- Care facility
- Veterinary services
- Daycare
- Restaurant
- Brewery with taproom
- Micro-distillery
- Retail and service

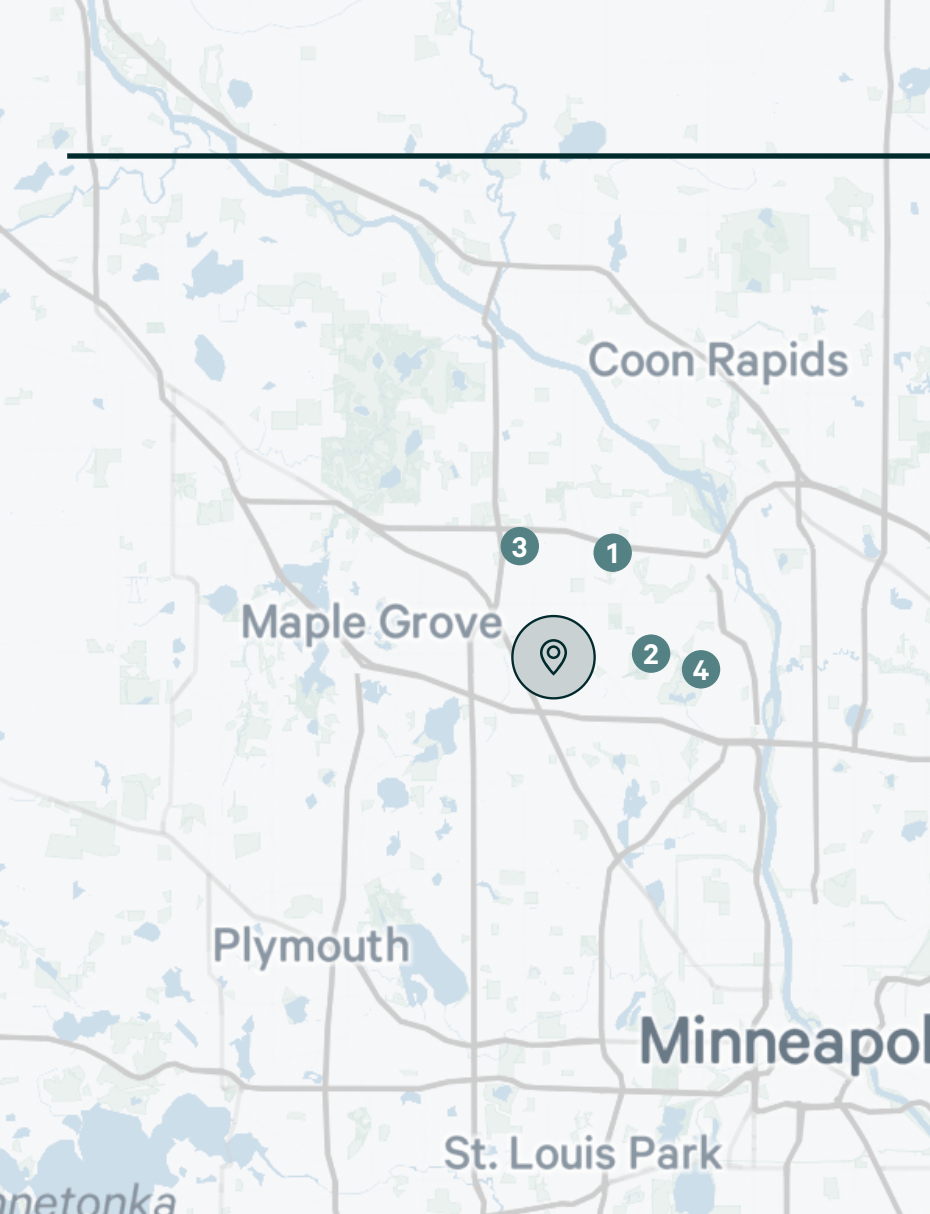
### Building Highlights

- 16,500 SF one-story building built in 1977
- HVAC - central heating and air conditioning
- Garage on property
- Real estate taxes estimated at \$36,486

\*Planned [New Light Rail Station](#) only 3 blocks away at Brooklyn Blvd and W Broadway Ave

### Headquartered in Brooklyn Park





## Community Growth

- 1 610 West Building 5**  
115-unit multifamily development
- 2 7516 Brooklyn Blvd N**  
Conditional Use Permit and Site Plan Review for a daycare facility
- 3 9450 Decatur Dr N**  
Decatur North and South Apartments Final Plat, Site Plan Review, and Rezoning for two 175 unit apartment buildings
- 4 7964 Xerxes Ave N**  
Estherra Care Assisted Living Conditional Use Permit and Variance for a 21-unit assisted living facility
- 4 7621 Brooklyn Blvd N**  
Village Creek Apartments Conditional Use Permit to construct and operate a multi-family apartment building

Source: City of Brooklyn Park

## Economic Drivers



**Strong High-Tech  
Engineering Industry  
Presence**



**A Central Location for  
Medical Innovation**



**A Diverse  
Community**



**Higher Education:  
Hennepin Technical  
College, North Hennepin  
Community College**



**Strong working relationship  
with State of Minnesota and  
its programs**



**A City that Empowers  
Businesses  
and People Alike**

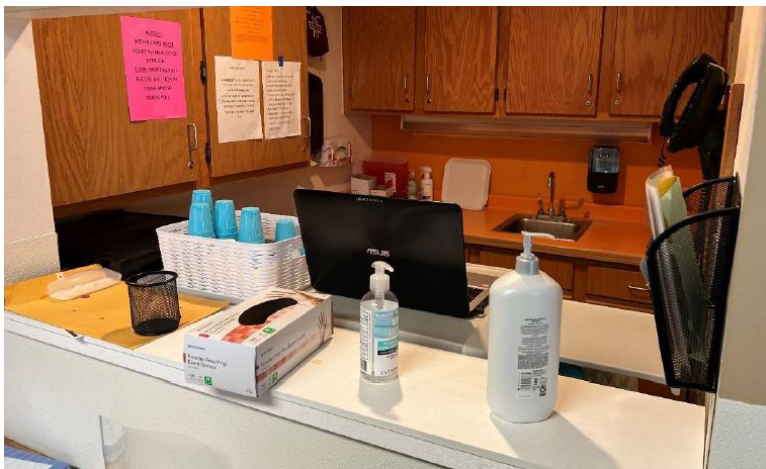




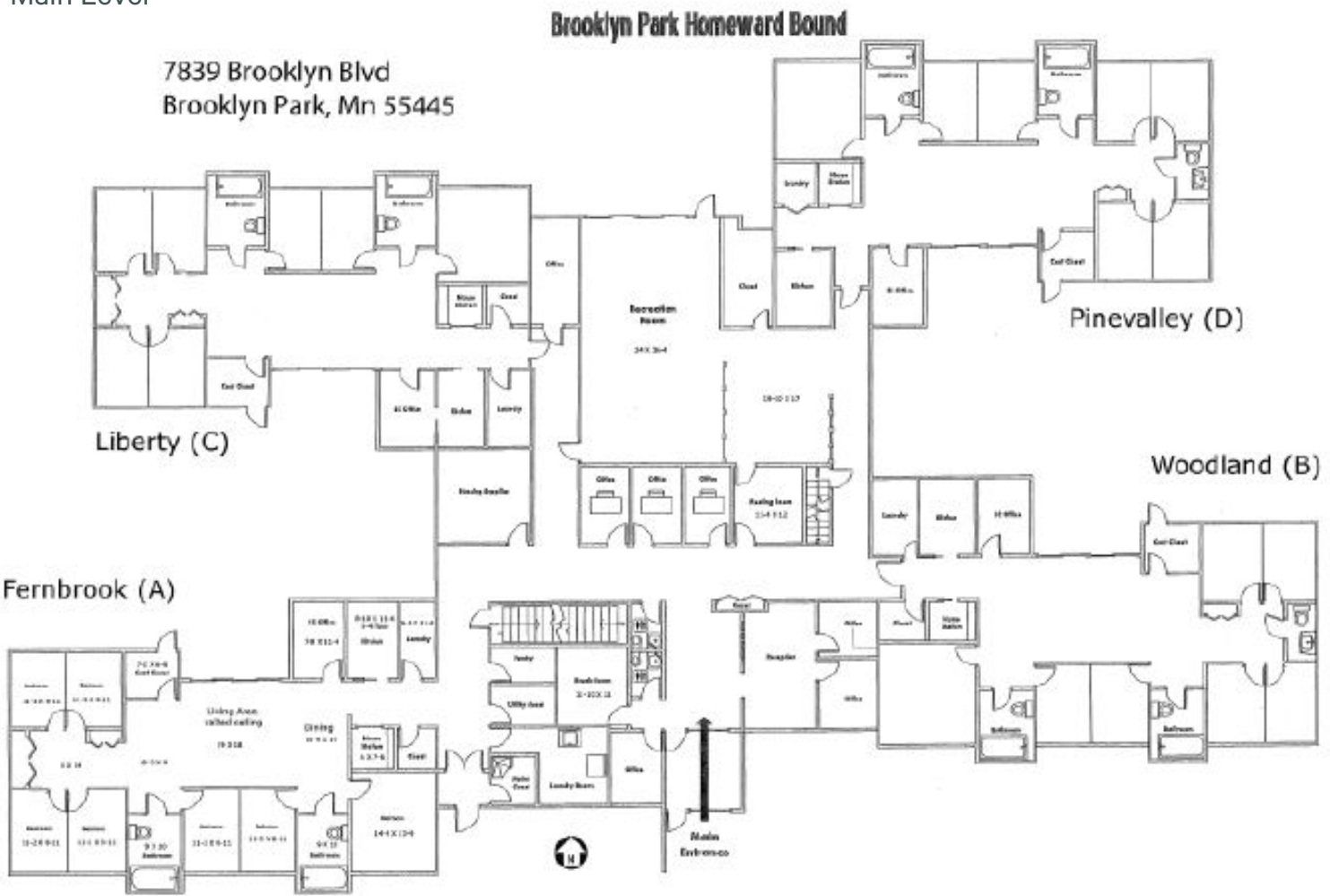




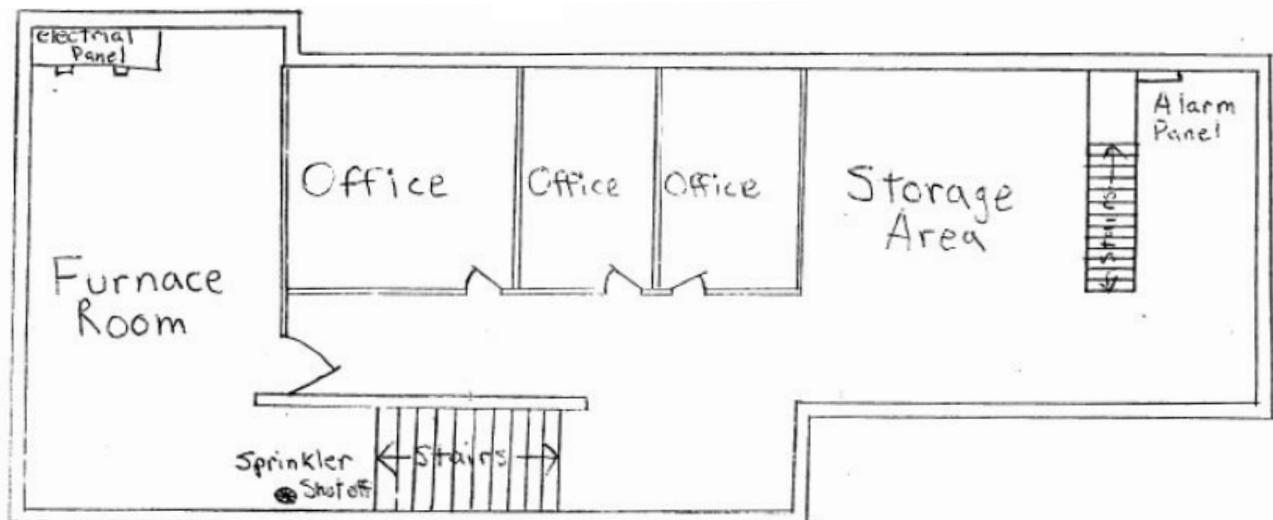




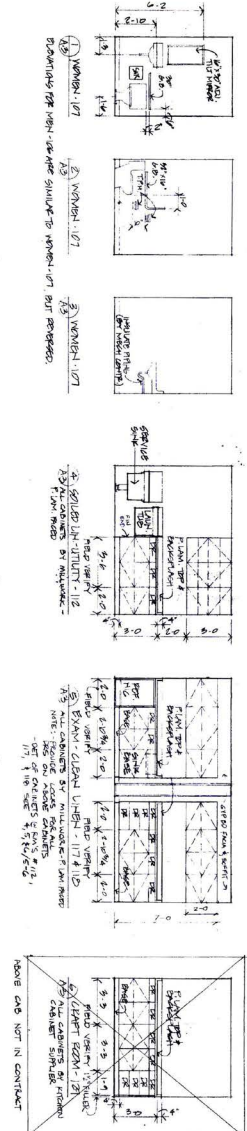
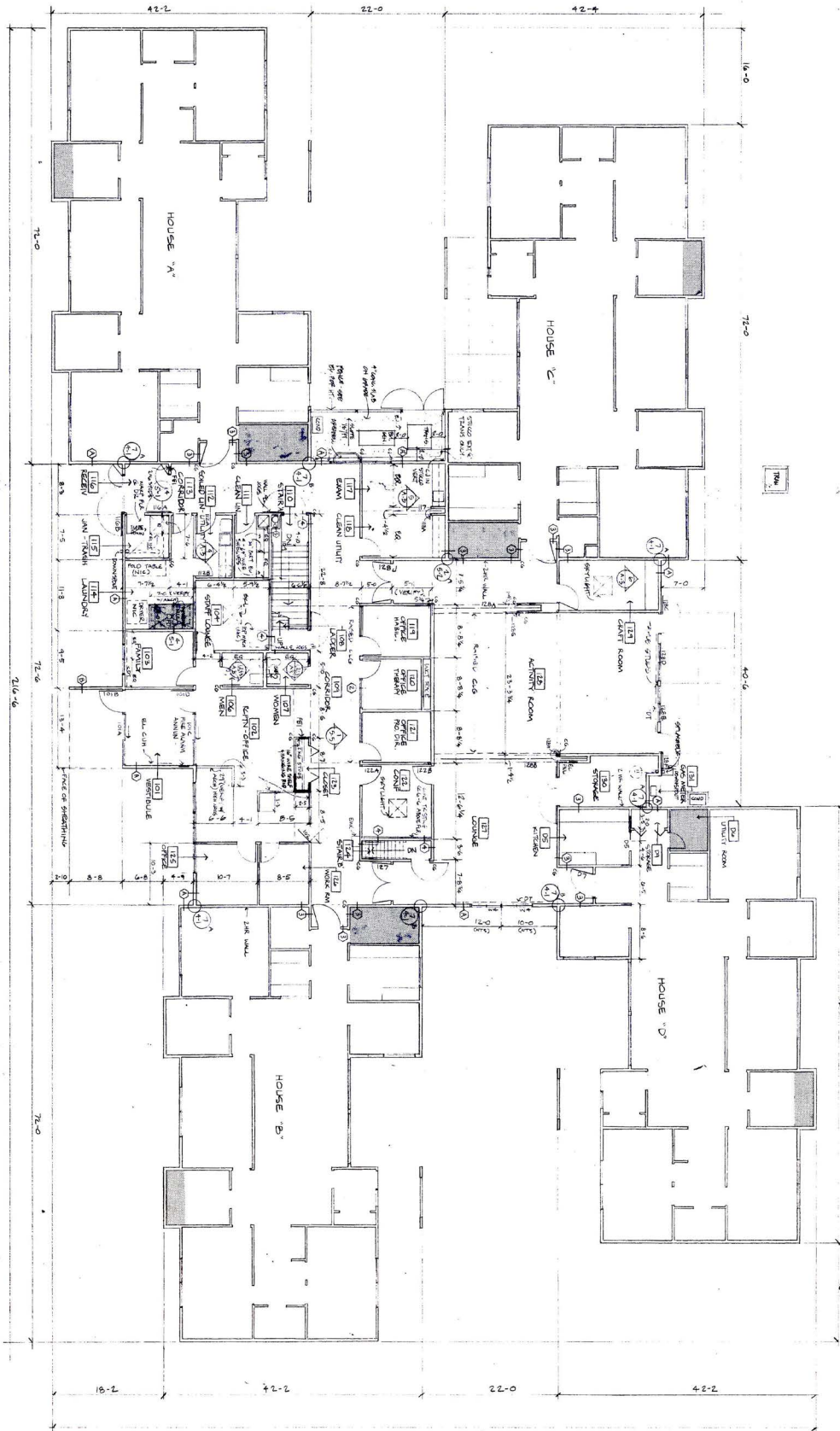
Main Level



Basement








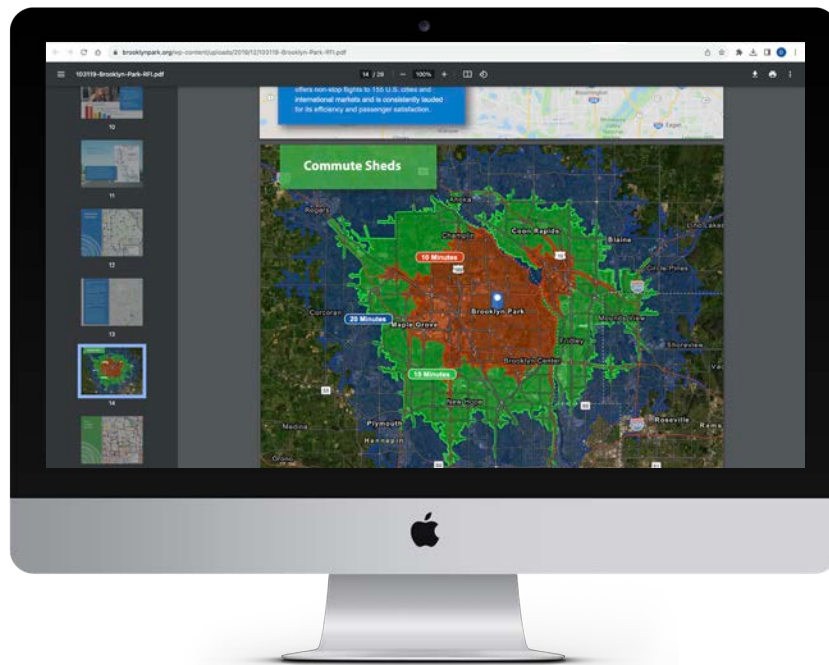
**PLAN NOTES**

- 1. UNLESS SPECIFIED, ALL WINDOW TREATMENTS SHALL BE OF THE FOLLOWING TYPE:
  - 101. 5/8\"
  - 102. 5/8\"
  - 103. 5/8\"
- 2. ALL WINDOW TREATMENTS SHALL BE MOUNTED UNLESS NOTED OTHERWISE.





 Click here to learn more about  
Brooklyn Park!



Source: City of Brooklyn Park

## Contact Us

### Jerry Driessen

First Vice President  
+1 612 336 4310  
gerald.driessen@cbre.com

### Frank Sherwood

Vice President  
+1 952 924 4823  
frank.sherwood@cbre.com

# CBRE

© 2023 CBRE, Inc. All rights reserved. This information has been obtained from sources believed reliable, but has not been verified for accuracy or completeness. You should conduct a careful, independent investigation of the property and verify all information. Any reliance on this information is solely at your own risk. CBRE and the CBRE logo are service marks of CBRE, Inc. All other marks displayed on this document are the property of their respective owners, and the use of such logos does not imply any affiliation with or endorsement of CBRE. Photos herein are the property of their respective owners. Use of these images without the express written consent of the owner is prohibited.