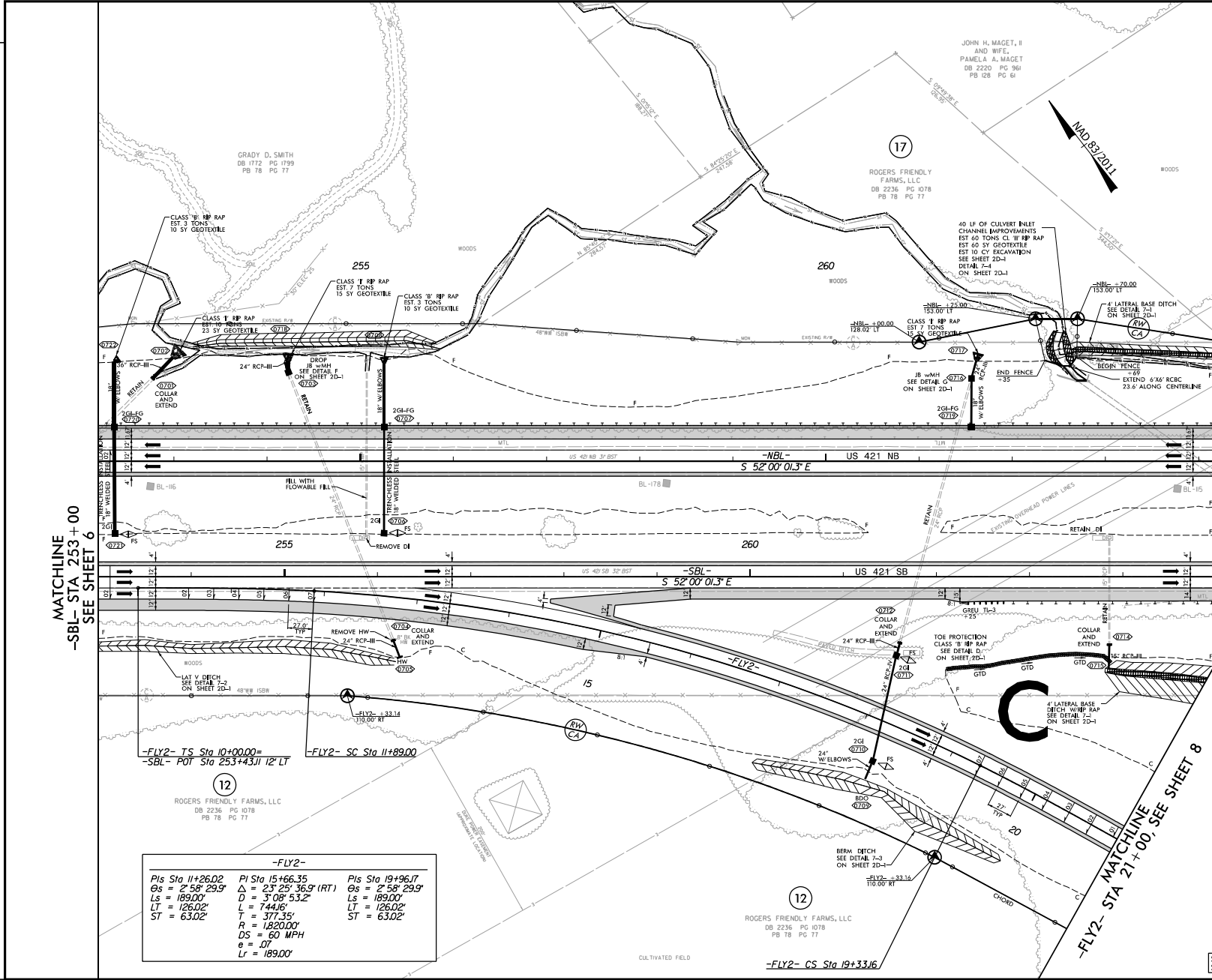


PROJECT REFERENCE NO.	SHEET NO.
HE-0004	7
RW SHEET NO.	HYDRAULICS ENGINEER
ROADWAY DESIGN ENGINEER	

DOCUMENT NOT CONSIDERED FINAL  
UNLESS ALL SIGNATURES COMPLETED

**HDR** HDR Engineering, Inc. of the Carolinas  
555 Fayetteville St. Suite 900 Raleigh, NC 27601  
N.C.B.E.L.S. License Number: F-0116



-FLY2-		
PIs Sta 11+26.02	PI Sta 15+66.35	PIs Sta 19+96.17
Os = 2°58'29.9"	Δ = 23°25'36.9" (RT)	Os = 2°58'29.9"
Ls = 189.00'	D = 3'08" 53.2"	Ls = 189.00'
LT = 126.02'	L = 744.16'	LT = 126.02'
ST = 63.02'	T = 377.35'	ST = 63.02'
	R = 1820.00'	
	Os = 60 MPH	
	α = 07'	
	Lr = 189.00'	

MATCHLINE  
-SBL- STA 253+00  
SEE SHEET 6

MATCHLINE  
-SBL- STA 265+00  
SEE SHEET 8

MATCHLINE  
-FLY2- STA 21+00, SEE SHEET 8

SEE SHEET 24 FOR -NBL- & -SBL- PROFILE  
SEE SHEET 38 FOR -FLY2- PROFILE

PLOT DRIVER: NCDOT.dwg\_color.apn\_50.dwt  
USER: E:\THROUGHT  
FILE: ...NEOD004.RD.L\T.MAL.PSK.01.dgn  
DATE: 9/9/2022  
TIME: 5:45:36 PM

REVISIONS