

GRAMERCY
PLAZA



GRAMERCY PLAZA [2050 W. 190TH ST, TORRANCE, CA]



**24-Hour
Access**



**Property Manager
on Site**



**Controlled
Access**



**Card key and
24-hour Security**

PROPERTY INFORMATION

Address: 2050 W. 190th St, Torrance, CA

Available SF: 34,931 SF

Max Contiguous SF: 25,265 SF

Building SF: 269,988

Asking Rate: Undisclosed

Covered Parking: 385 spaces

Surface Parking: 140 spaces

AVAILABILITIES

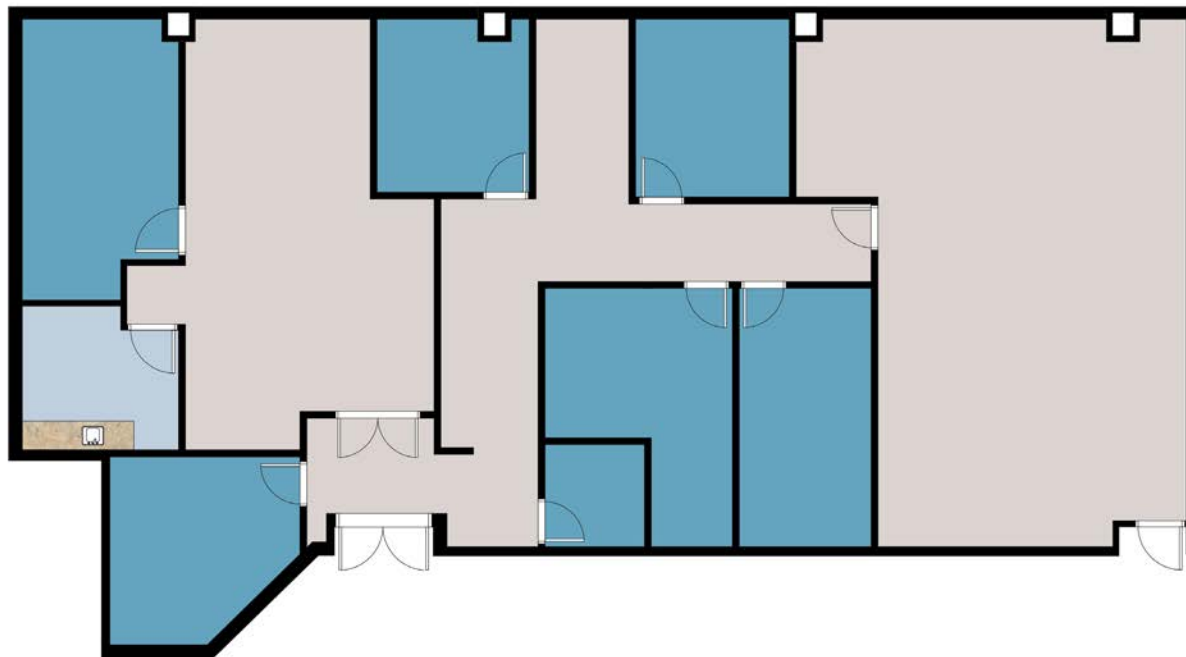
SUITE	RSF
Suite 101	5,511 RSF Available Now
Suite 108	4,155 RSF Available Now
Suite 400	7,057-25,265 RSF Available 2/13/2026
Suite 450	6,364 RSF Available 9/1/2026



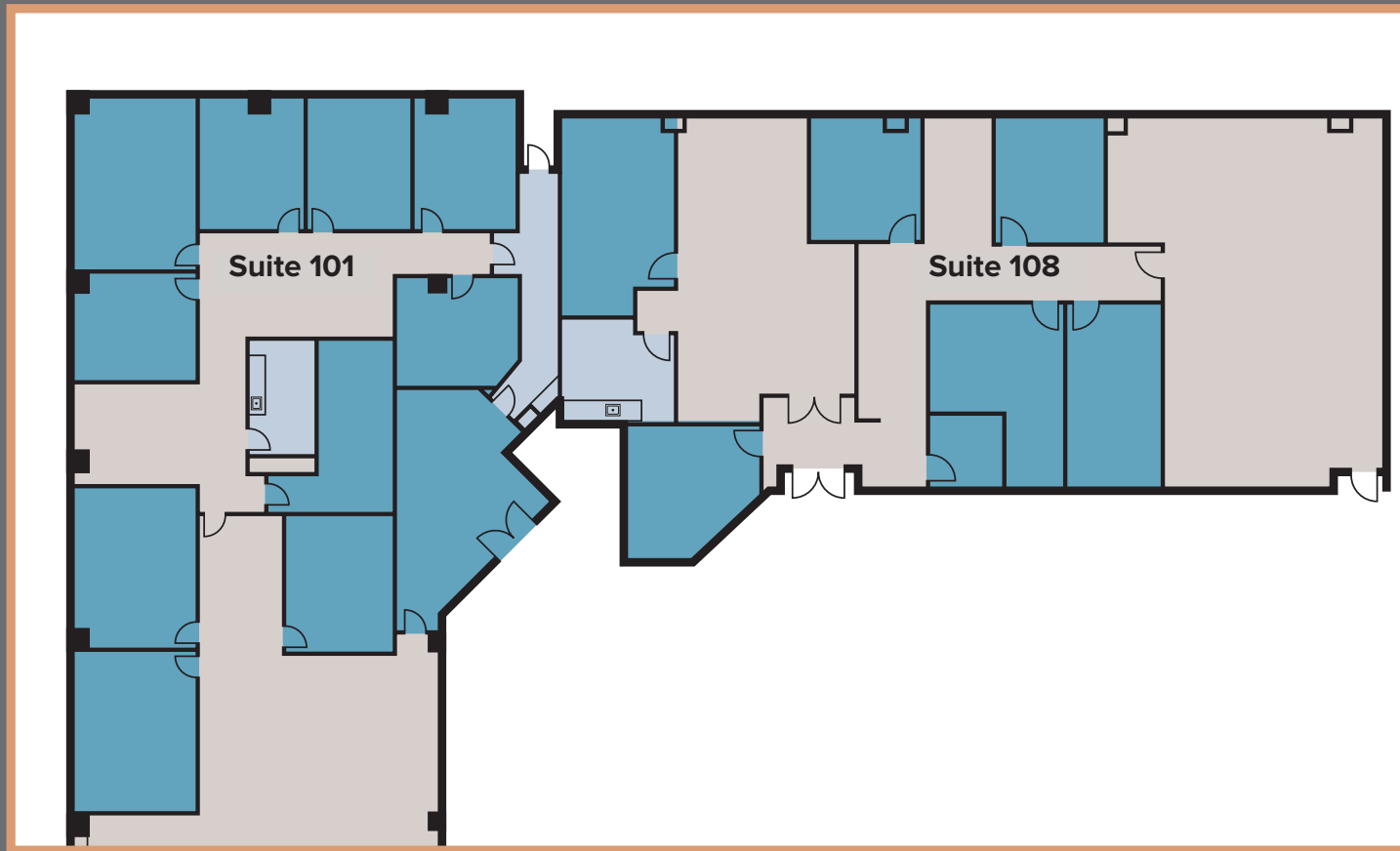
FLOOR PLAN: SUITE 101 5,511 RSF



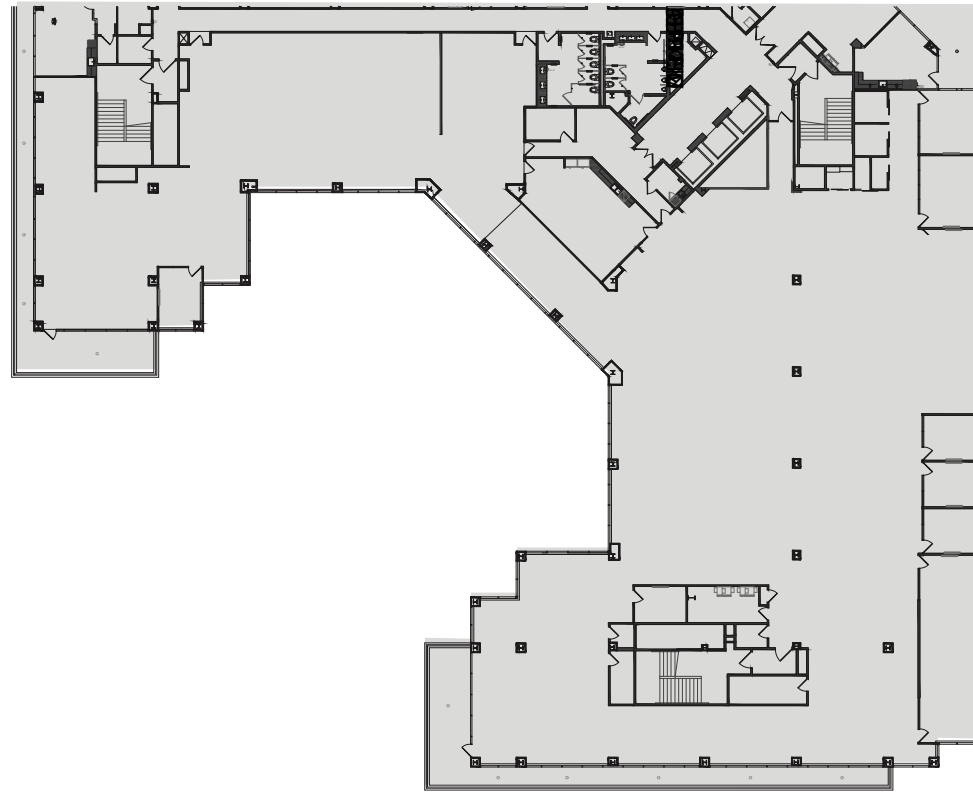
FLOOR PLAN: SUITE 108
4,155 RSF



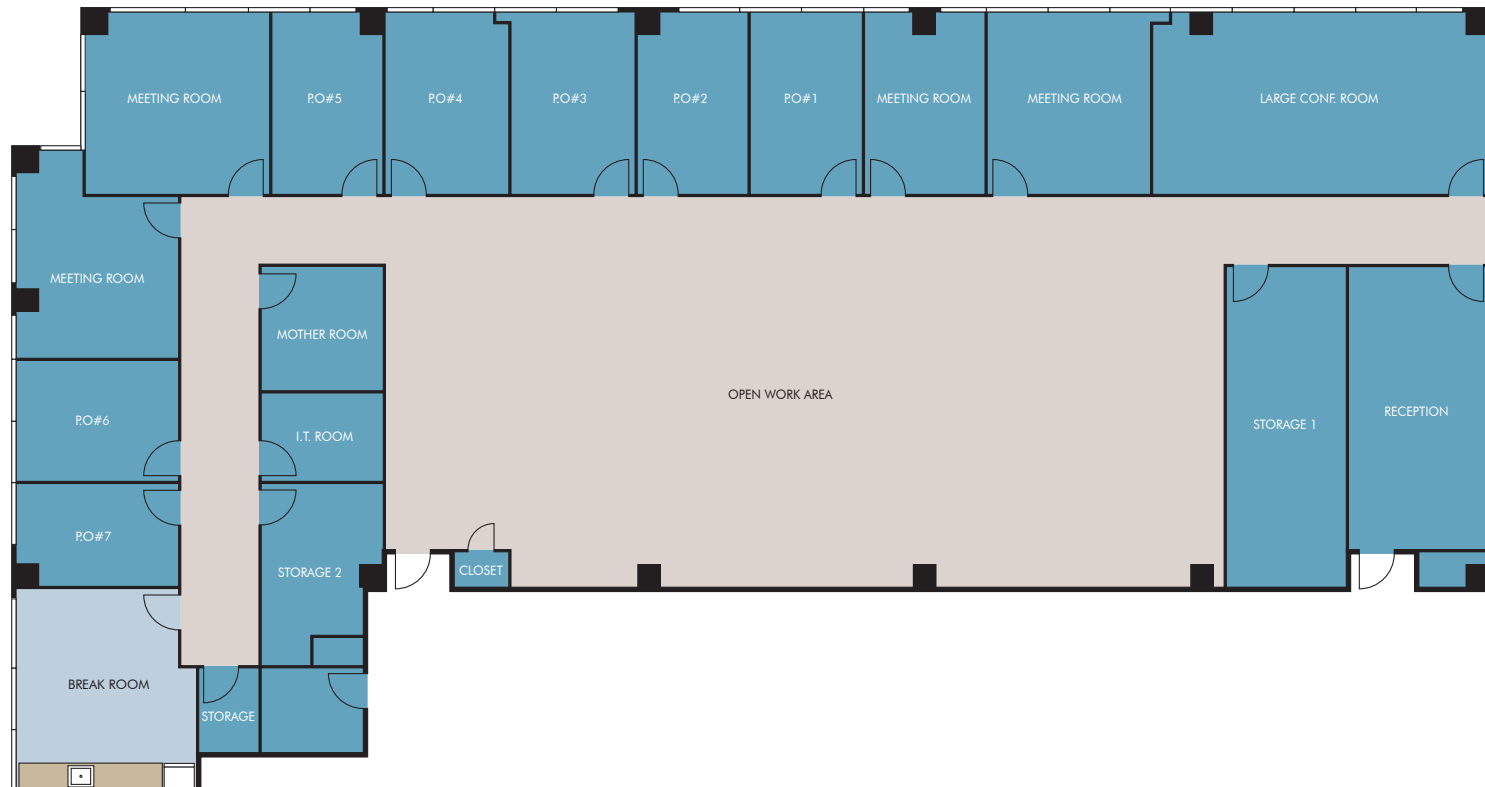
FLOOR PLAN: SUITE 101 & SUITE 108



FLOOR PLAN: SUITE 400 7,057-25,265 RSF

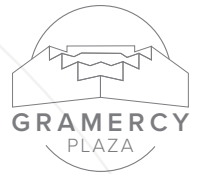


FLOOR PLAN: SUITE 450 6,364 RSF



AMENITY MAP





For more
information,
please contact:

TOM SHEETS

Executive Vice President
Lic. 01252183
+1 310 363 4943
tom.sheets@cbre.com

QUINT CARROLL

Senior Vice President
Lic. 01914692
+1 310 363 4973
quint.carroll@cbre.com

© 2025 CBRE, Inc. All rights reserved. This information has been obtained from sources believed reliable but has not been verified for accuracy or completeness. You should conduct a careful, independent investigation of the property and verify all information. Any reliance on this information is solely at your own risk. CBRE and the CBRE logo are service marks of CBRE, Inc. All other marks displayed on this document are the property of their respective owners, and the use of such logos does not imply any affiliation with or endorsement of CBRE. Photos herein are the property of their respective owners. Use of these images without the express written consent of the owner is prohibited.

CBRE