



Fillmore Place

100 Fillmore St | Denver, CO 80206

Property Overview

- High identity signature office building in Denver's premier Cherry Creek North neighborhood
- Directly adjacent to the Cherry Creek Shopping Center and Cherry Creek North Shopping Area
- Sawtooth building design provides numerous corner offices with breathtaking mountain & city views w/ balconies
- Numerous capital improvements including HVAC, parking, common area finishes, fitness center, and bike storage
- Garage parking available for \$155/month per space

Lease Rate : \$10.00/SF

Property Facts

Available SF:	3,031 SF
Parking:	\$155.00/mo
Parking Ratio:	2.60/1,000
Year Built /	1982 / 2014

For more information:

Ana Sandomire

303 565 3029

asandomire@shamesmakovsky.com

Peter Knisely

720 881 7534

pknisely@shamesmakovsky.com

NO WARRANTY OR REPRESENTATION, EXPRESS OR IMPLIED, IS MADE AS TO THE ACCURACY OF THE INFORMATION CONTAINED HEREIN, AND THE SAME IS SUBMITTED SUBJECT TO ERRORS, OMISSIONS, CHANGE OF PRICE, RENTAL OR OTHER CONDITIONS, PRIOR SALE, LEASE OR FINANCING, OR WITHDRAWAL WITHOUT NOTICE, AND OF ANY SPECIAL LISTING CONDITIONS IMPOSED BY OUR PRINCIPALS NO WARRANTIES OR REPRESENTATIONS ARE MADE AS TO THE CONDITION OF THE PROPERTY OR ANY HAZARDS CONTAINED THEREIN ARE ANY TO BE IMPLIED.

1400 Glenarm Place, Suite 100
Denver, CO 80202
303 534 5005

naishamesmakovsky.com

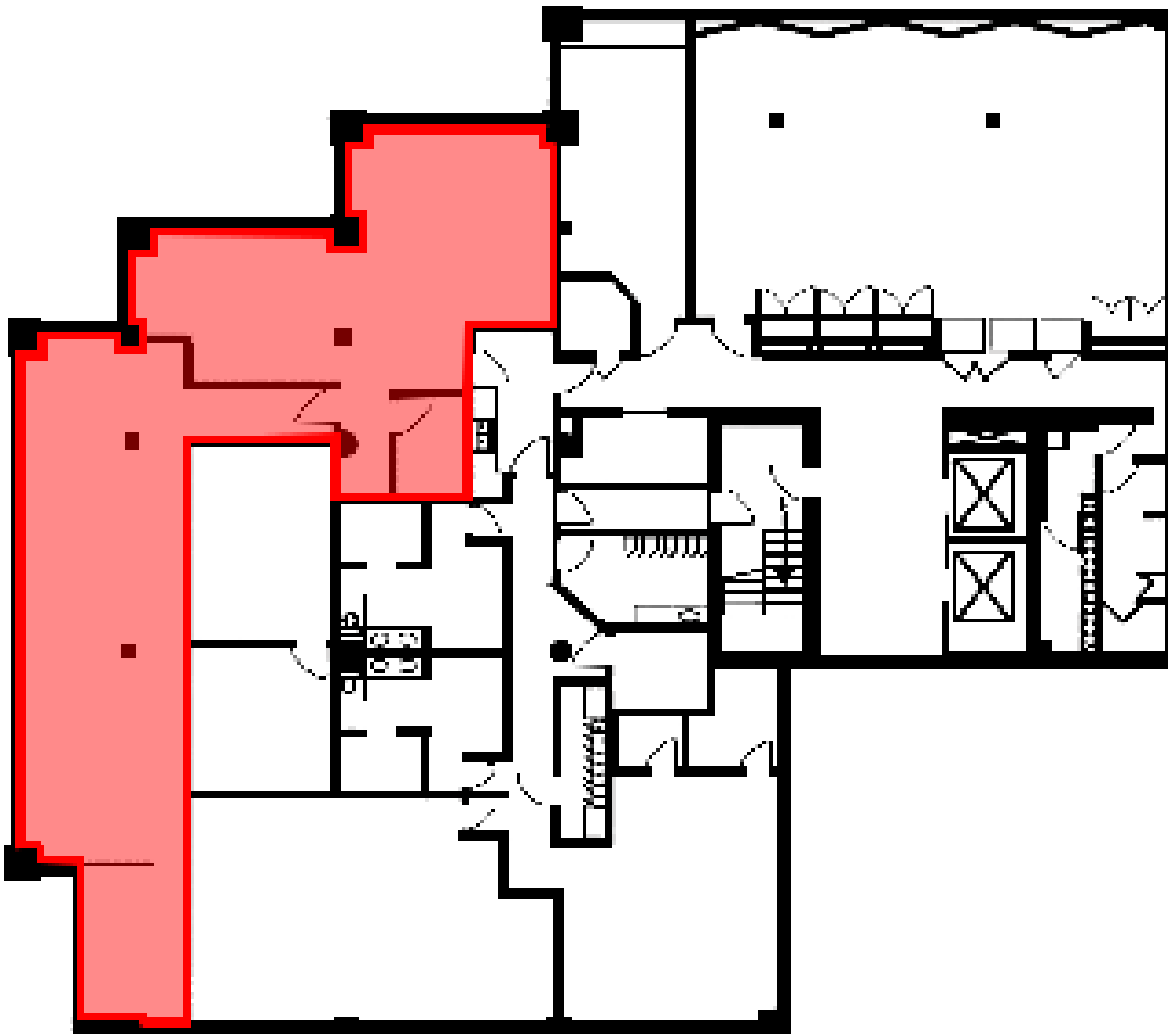
FOR LEASE

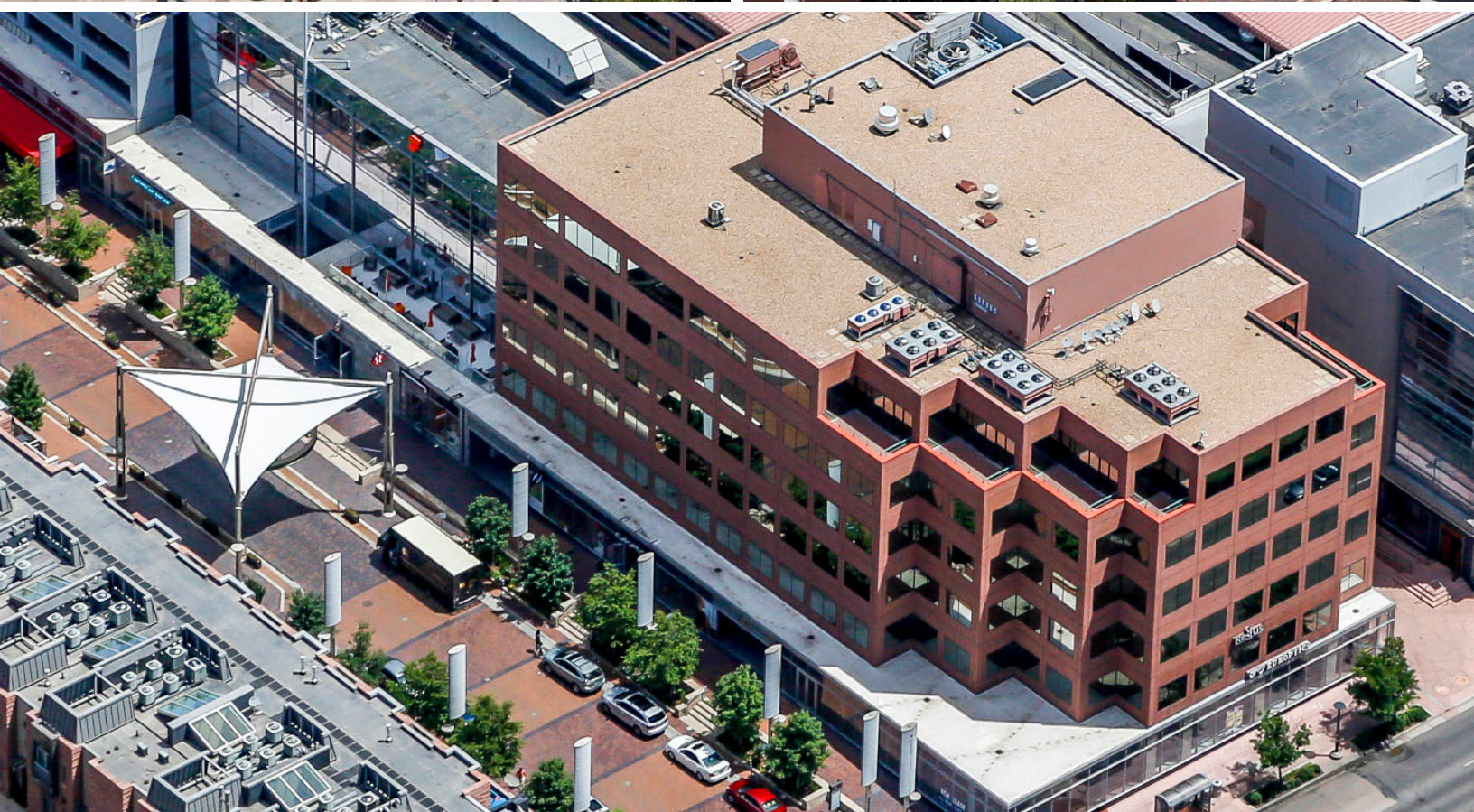
3,031 SF

100 Fillmore Street
Denver, CO 80206

Lower Level

\$10.00/SF FSG





FOR LEASE
3,031 SF
100 Fillmore Street
Denver, CO 80206



Ana Sandomire

303 565 3029

asandomire@shamesmakovsky.com

Peter Knisely

720 881 7534

pknisely@shamesmakovsky.com

1400 Glenarm Place, Suite 100
Denver, CO 80202
303 534 5005

naishamesmakovsky.com